

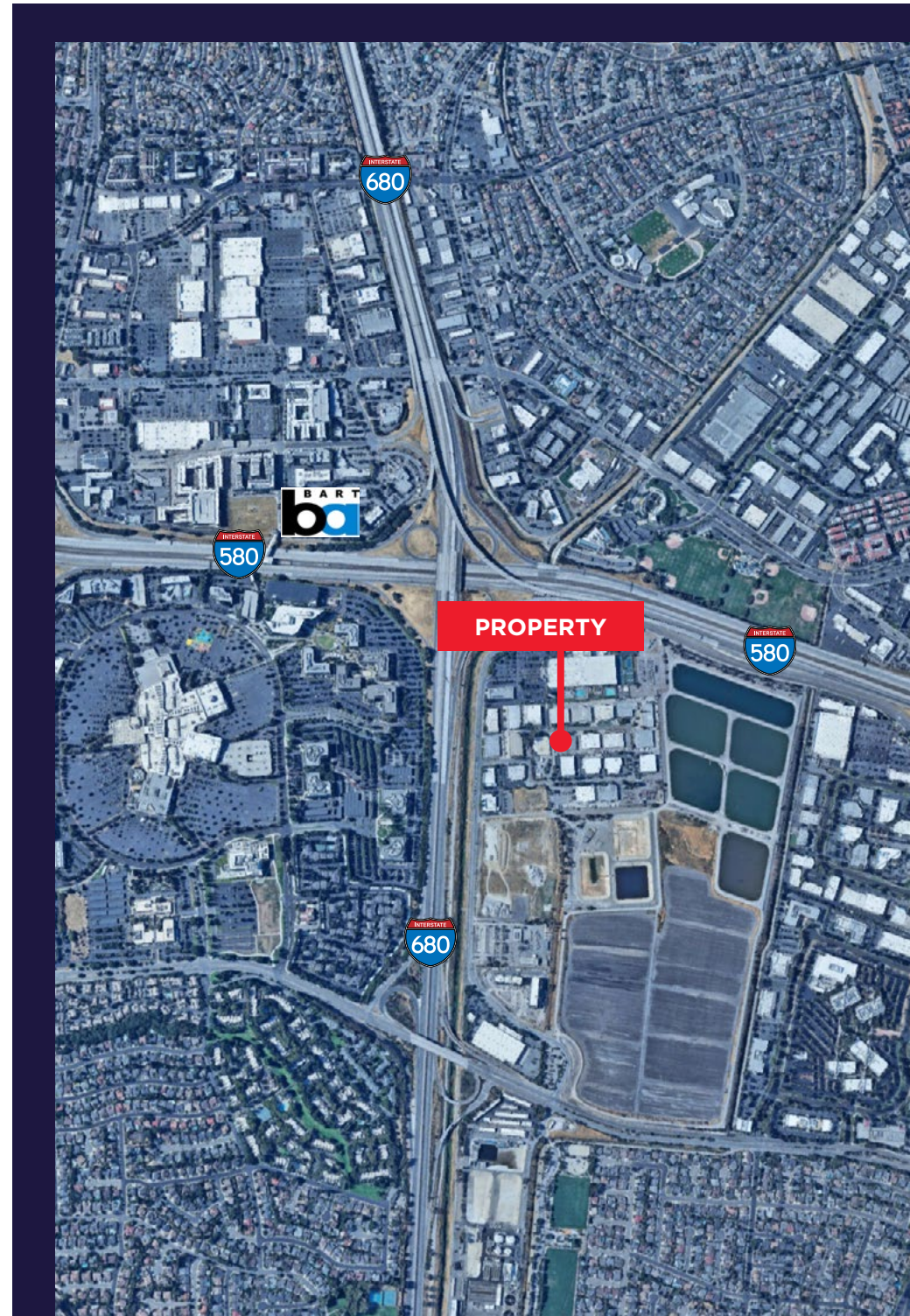
# 7074 COMMERCE CIRCLE PLEASANTON



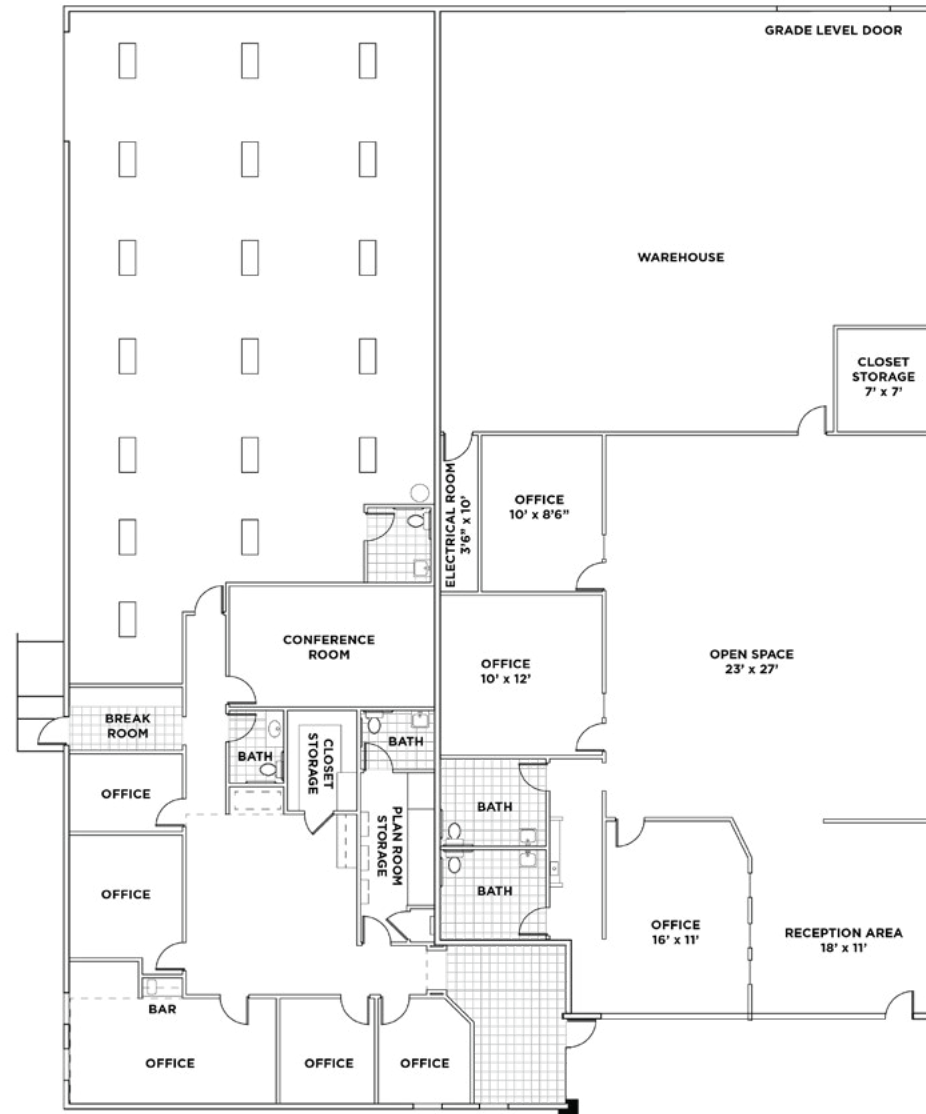
**FOR LEASE 9,100 SF**

# PROPERTY HIGHLIGHTS

- » ±9,100 SF (potentially divisible to ±4,100 and ±5,000 SF)
- » Office Buildout:
  - \* Reception
  - \* Open office
  - \* Seven (7) private offices
  - \* Two (2) conference rooms
  - \* Plan room
  - \* Kitchen/breakroom and coffee bar
  - \* Five (5) restrooms
  - \* Storage room
- » Insulated Warehouse
- » Two (2) Grade Level Doors
- » 16' Clear Height
- » Potential Fenced Yard Area
- » 2/1000 Parking
- » Excellent access to I-580/680
- » Close proximity to hotels, retail and eating establishments
- » Asking Rate: \$2.25 Industrial Gross
- » Available August 1, 2026



# SITE PLAN



Not to scale

## CONTACT

MARK DOWLING  
Managing Director  
+1 925 788 5387  
mark.dowling@cushwake.com  
Lic. #01107108