

FOR SUBLEASE

7722-7728 REINHOLD DRIVE

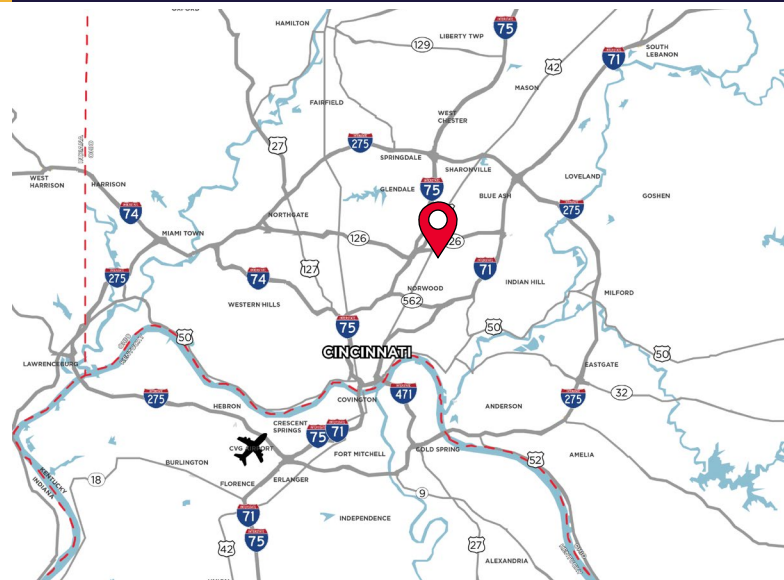
CINCINNATI, OH 45237



MANUFACTURING/WAREHOUSE

LEASE RATE: \$7.25/SF GROSS

- 14,500 SF Available
- (1) Dock Door
- (5) Drive-in Doors
- 16' Clear Height
- 1 Mile from I-75
- **Master Lease Expiration 6/30/2028**



For more information, contact:

SEATTLE STEIN
+1 513 763 3027
seattle.stein@cushwake.com

LINDSAY HARTMANN
+1 513 322 0898
lindsay.hartmann@cushwake.com

201 E. Fourth Street, Suite 1800
Cincinnati, OH 45202
P: +1 513 421 4884
cushmanwakefield.com

FOR SUBLEASE

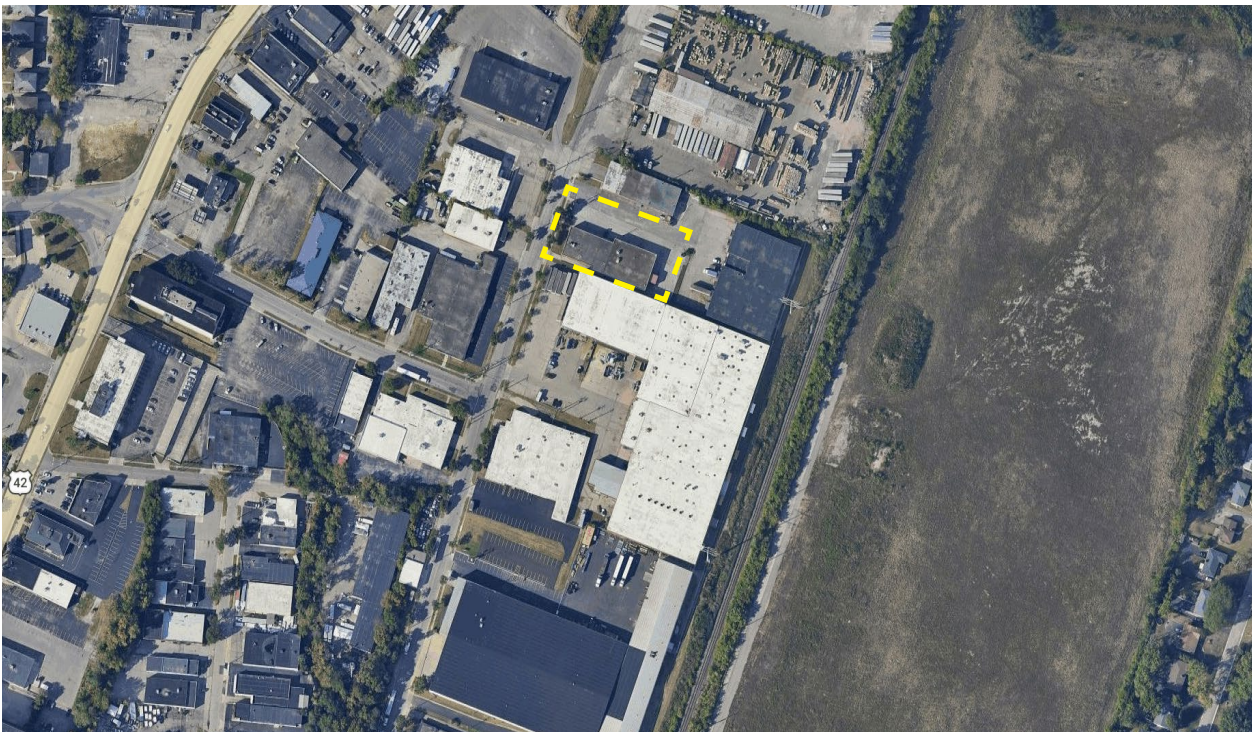
7722-7728 REINHOLD DRIVE

CINCINNATI, OH 45237



COUNTY	Hamilton	DOCK DOORS	(1) Dock Door; 14'x14'
ACRES	0.82	DRIVE-IN DOORS	(5) Drive-in Doors; (2) 12'x14'; (1) 10'x10'; (1) 8'x8'; (1) 10'x14'
AVAILABLE SIZE	14,500 SF	PARKING	±15
OFFICE SIZE	500 SF	HVAC	Office - AC Warehouse - Heat only
WAREHOUSE SIZE	14,000 SF	SPRINKLER	None
YEAR BUILT	1967	ELECTRIC	3phase
CLEAR HEIGHT	16'	MISC.	Crane ability
ZONING	MG-T; Manufacturing General - Transportation		

AERIAL



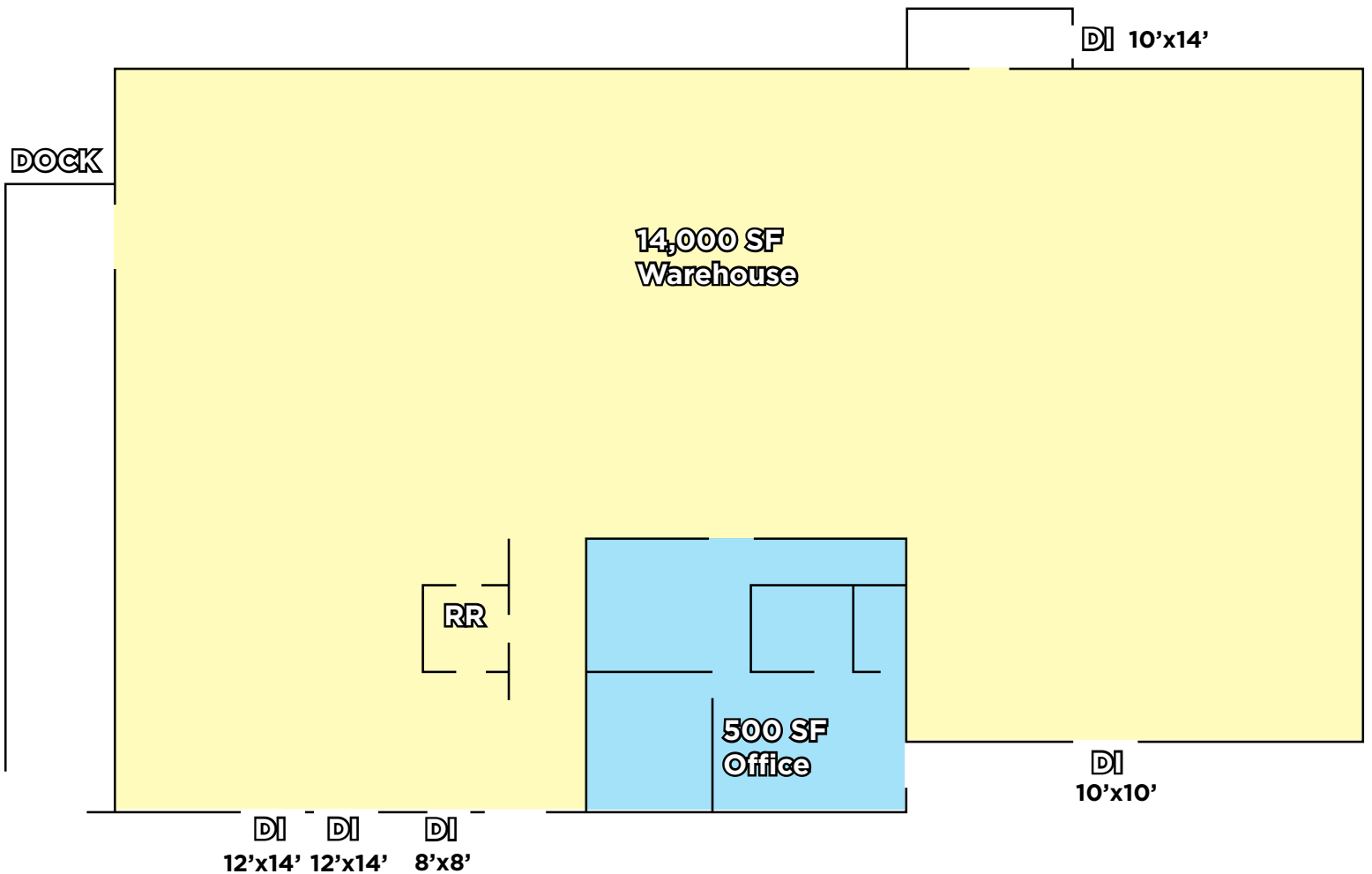
FOR SUBLEASE

7722-7728 REINHOLD DRIVE

CINCINNATI, OH 45237



FLOOR PLAN



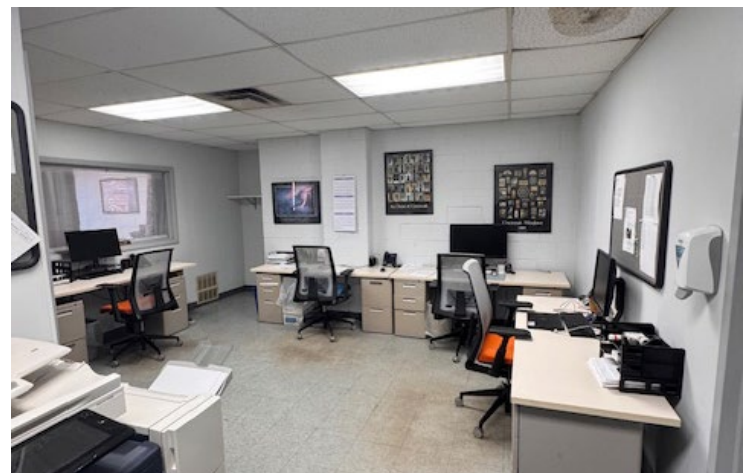
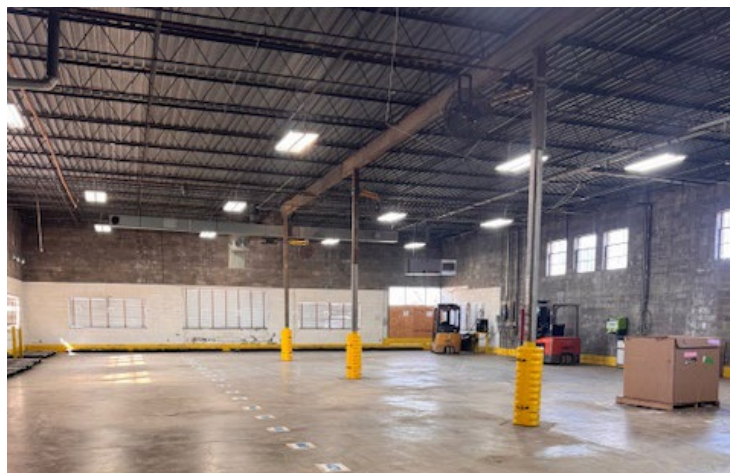
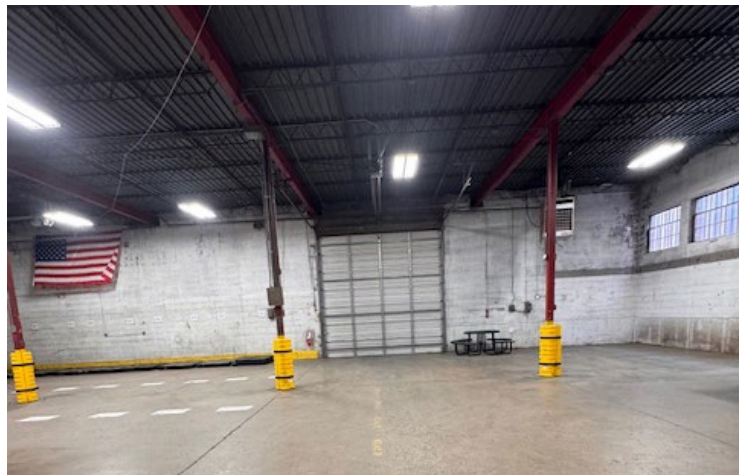
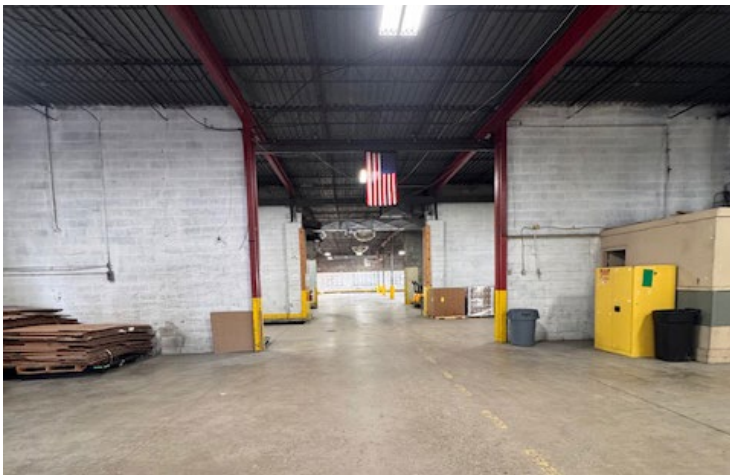
FOR SUBLEASE

7722-7728 REINHOLD DRIVE

CINCINNATI, OH 45237



PHOTOS



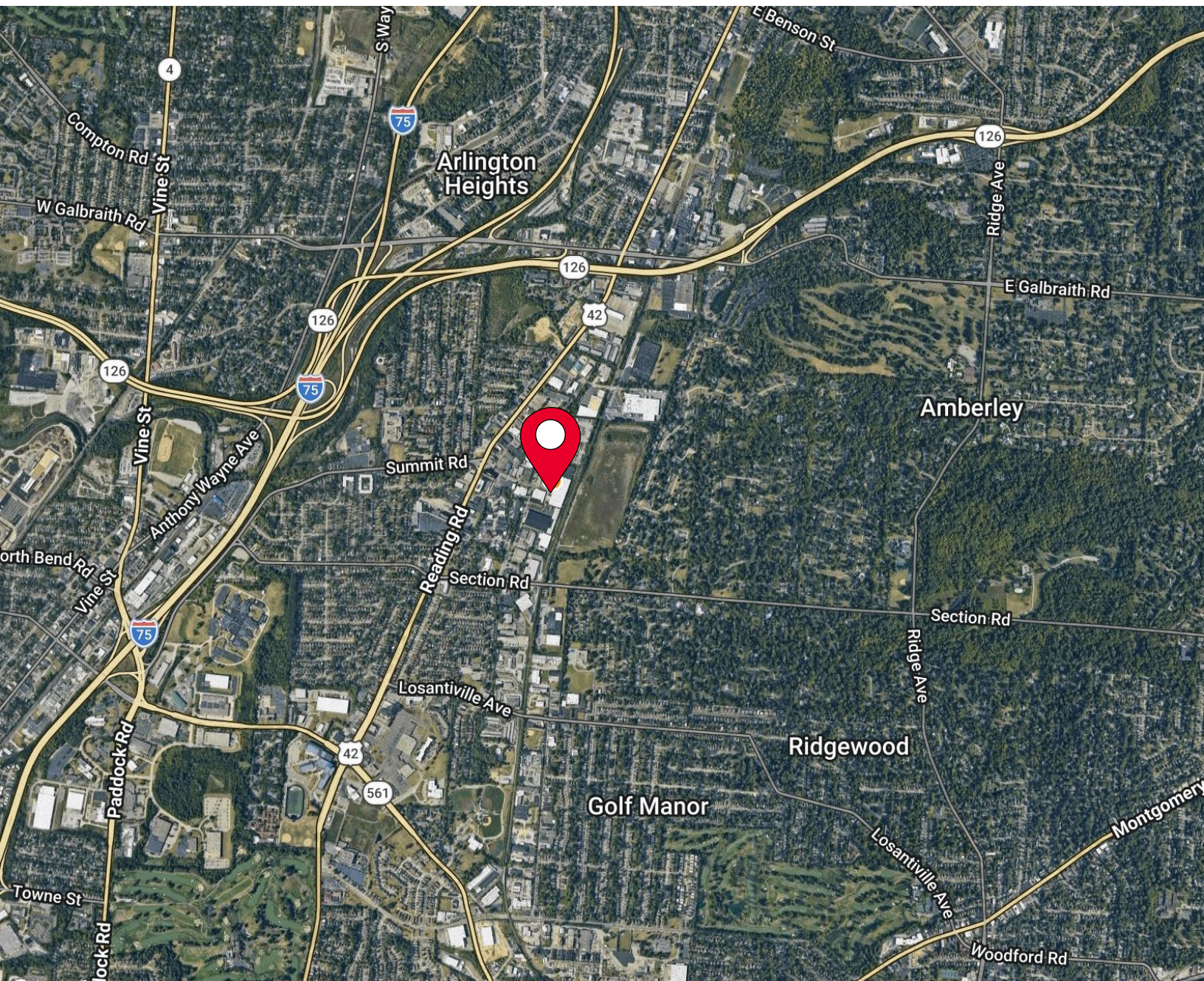
FOR SUBLEASE

7722-7728 REINHOLD DRIVE

CINCINNATI, OH 45237



AERIAL LOCATION



For more information, contact:

SEATTLE STEIN

+1 513 763 3027

seattle.stein@cushwake.com

LINDSAY HARTMANN

+1 513 322 0898

lindsay.hartmann@cushwake.com

201 E. Fourth Street, Suite 1800

Cincinnati, OH 45202

P: +1 513 421 4884

cushmanwakefield.com