

53

BROADWAY

Corner Retail Space in
Williamsburg, Brooklyn
Available for Lease

EXCLUSIVE LEASING AGENT:



53

BROADWAY

High-Visibility Corner Retail Opportunity in Williamsburg, Brooklyn

APPROXIMATE SIZE

Ground Floor	3,440 SF
Lower level	1,500 SF

CEILING HEIGHT

Ground Floor	10 FT
Lower level	8FT

FRONTAGE

Broadway Ave	60 FT
Wythe Ave	64 FT

POSSESSION

Immediate

ASKING RENT

Upon Request

TERM

Long-Term

FEATURES

- Ventilation System In-Place
- Usable Lower-Level Space
- Over 120' of wraparound frontage
- Prime Corner Location in Williamsburg



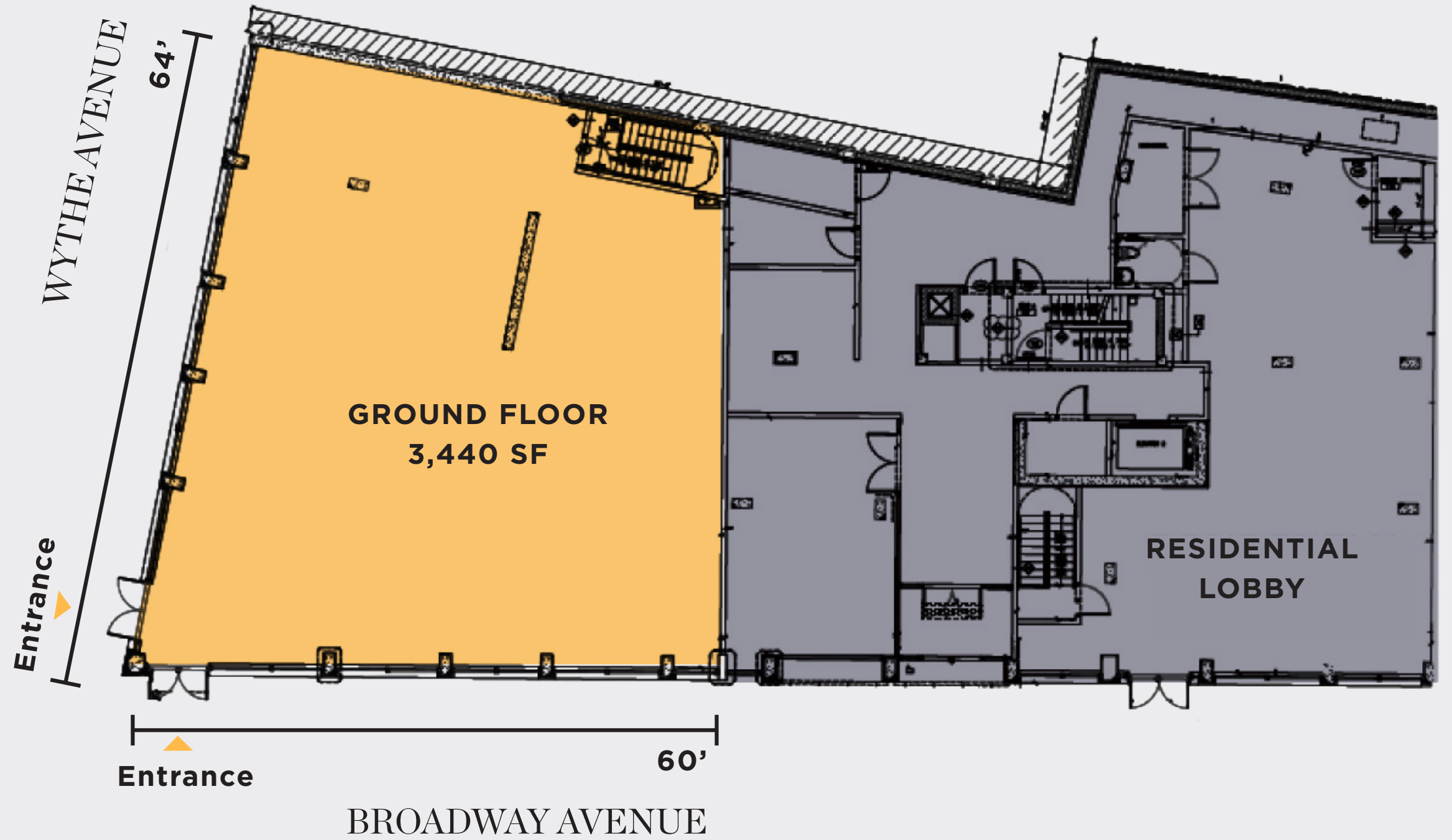
53

BROADWAY

FLOOR PLAN

GROUND FLOOR
3,440 SF

LOWER LEVEL
1,500 SF



53

BROADWAY

NEIGHBORHOOD

OTHER NEARBY RETAIL

Marlow & Daughters

Davidoff of Geneva

Bar Milagro

Barano Pizza

PSARAKI

Korn's Bakery

Poetica Coffee

Baby's All Right

Abstrakt Studio & Gallery

Kent Wines & Liquors

Peter Luger's Steakhouse



DOMINO PARK

5 MIN

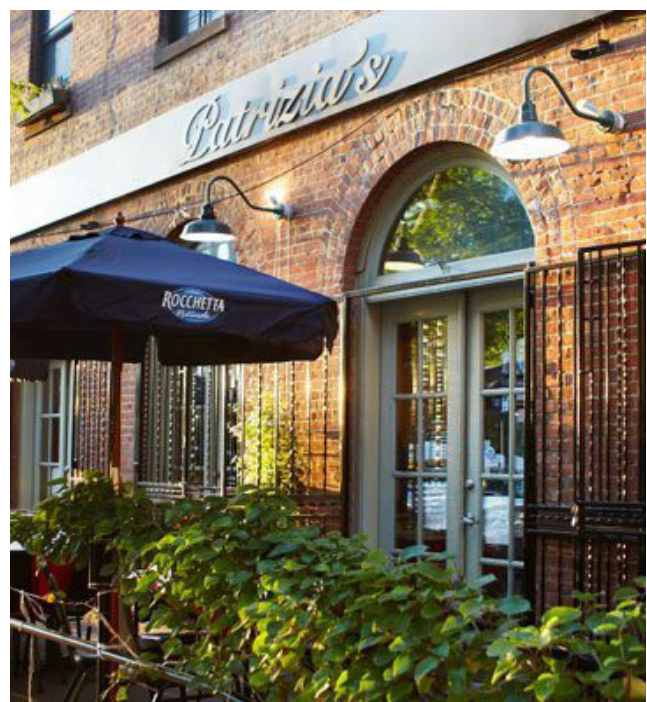
WALK FROM 53 BROADWAY



GIANDO ON THE WATER



WILLIAMSBURG BRIDGE



DAILY TRAFFIC VOLUME AROUND

106 K

VEHICLES PER DAY

53

BROADWAY

IAN LERNER

212.841.5948

Ian.Lerner@cushwake.com

ED NELSON

212.660.7769

Ed.Nelson@cushwake.com

EXCLUSIVE LEASING AGENT:



©2026 Cushman & Wakefield. All rights reserved. The information contained in this communication is strictly confidential. This information has been obtained from sources believed to be reliable but has not been verified. No warranty or representation, express or implied, is made as to the condition of the property (or properties) referenced herein or as to the accuracy or completeness of the information contained herein, and same is submitted subject to errors, omissions, change of price, rental or other conditions, withdrawal without notice, and to any special listing conditions imposed by the property owner(s). Any projections, opinions or estimates are subject to uncertainty and do not signify current or future property performance.