



**FOR LEASE**

73,330 SF  
OF SUBURBAN OFFICE SPACE

**700  
SILVER SEVEN RD.**

OTTAWA, ON



**CUSHMAN &  
WAKEFIELD**  
Ottawa



**Panoramic  
Views**

## PROPERTY OVERVIEW

700 Silver Seven Road is a five-storey, 73,330-square-foot (SF) office building featuring efficient floor plates of approximately 15,500 SF. Offered with full vacant possession, the Property provides an exceptional opportunity for an organization to establish a high-profile corporate headquarters with a prominent presence in Kanata. Its strategic location offers excellent access to major arterial routes, Highway 417, and a wide range of surrounding amenities that support Kanata's thriving employment base.

***73,330 SF of unique office space***

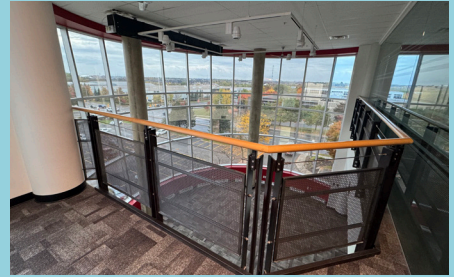
# BUILDING HIGHLIGHTS

**73,330 SF**

AVAILABLE  
SPACE

**~15,500 SF**

FLOOR  
PLATE

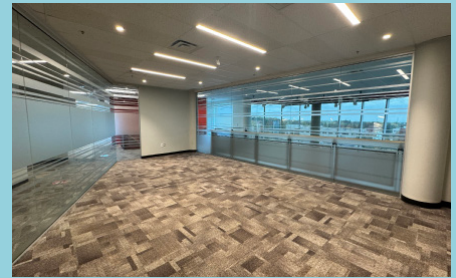


**3.7/1,000 SF**

PARKING  
RATIO

**5**

NUMBER OF  
FLOORS



**CONTACT  
LISTING AGENT**

NET RENT

**\$14.45**

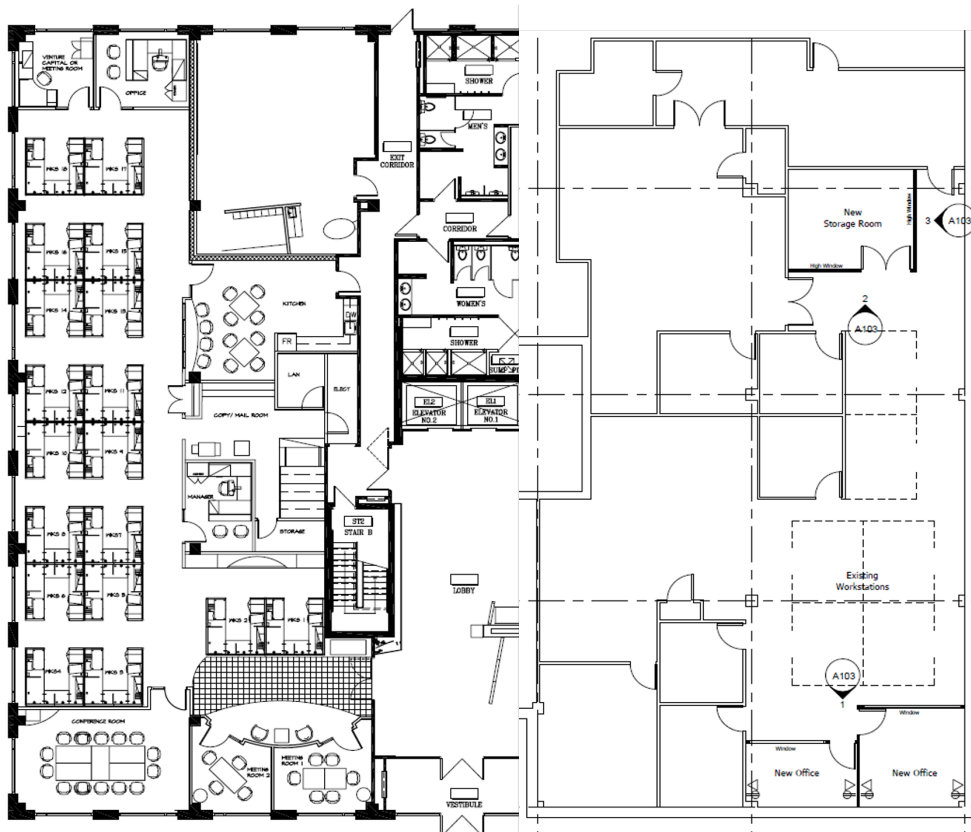
ADDITIONAL  
RENT  
(2026 est.)



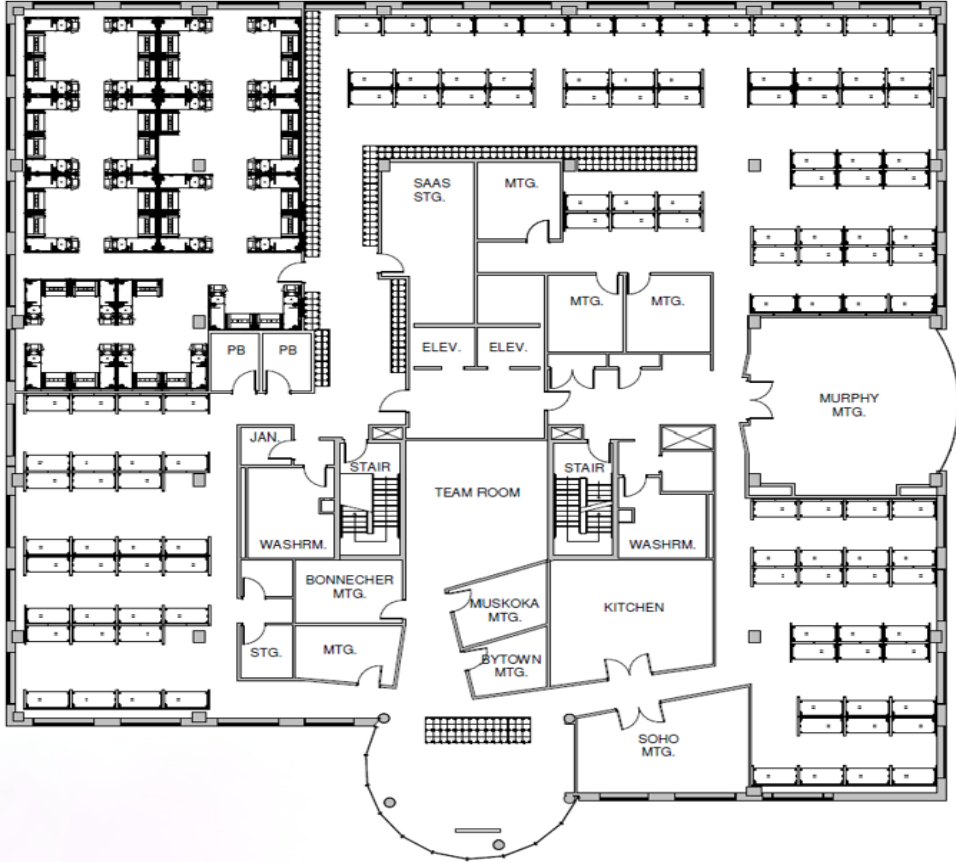
# AVAILABILITY

Suite	SF	Description
101	5,030	Traditional Office
120	4,688	Traditional Office
200	15,605	Traditional Office
300	15,708	Traditional Office
400 & 500	32,299	Traditional Office
Total Contiguous	73,330	

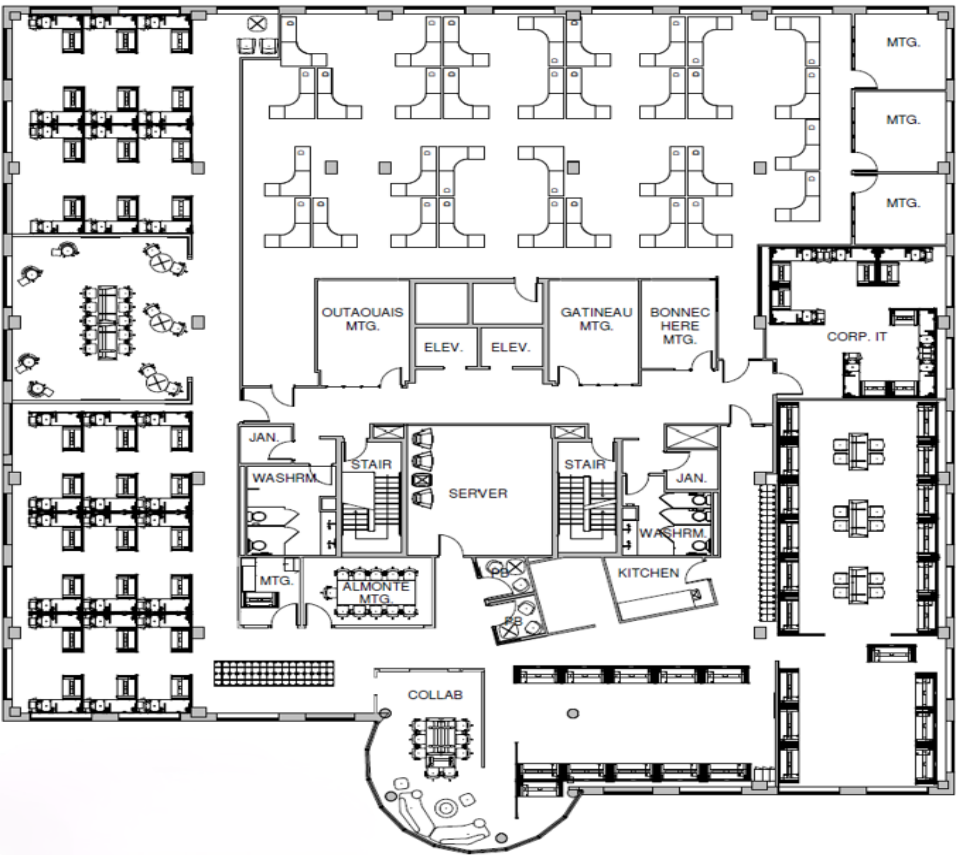
## 1ST FLOOR



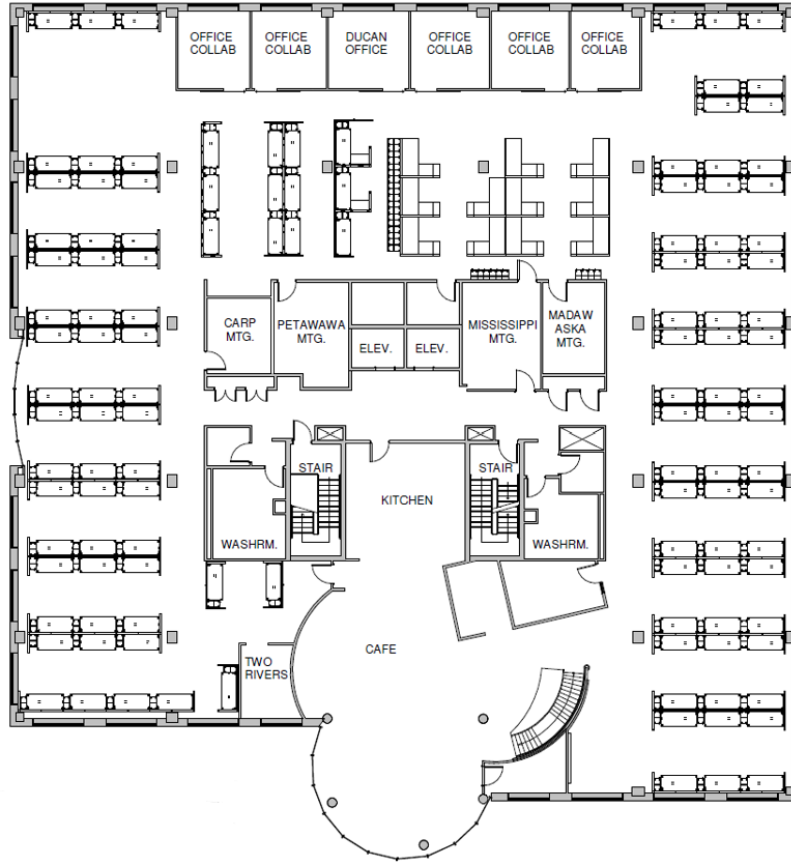
# 2ND FLOOR



# 3RD FLOOR



# 4TH FLOOR



# 5TH FLOOR





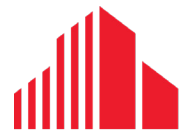
# AMENITIES MAP





Jessica Whiting  
Vice President  
Sales Representative  
+1 613 780 1597  
jwhiting@cwottawa.com

55 Metcalfe Street  
Ottawa, ON  
+1 613 236 7777  
cwottawa.com



**CUSHMAN &  
WAKEFIELD**  
Ottawa

©2026 Cushman & Wakefield | Ottawa. Brokerage Independently Owned and Operated. All rights reserved. The information contained in this communication is strictly confidential. This information has been obtained from sources believed to be reliable but has not been verified. NO WARRANTY OR REPRESENTATION, EXPRESS OR IMPLIED, IS MADE AS TO THE CONDITION OF THE PROPERTY (OR PROPERTIES) REFERENCED HEREIN OR AS TO THE ACCURACY OR COMPLETENESS OF THE INFORMATION CONTAINED HEREIN, AND SAME IS SUBMITTED SUBJECT TO ERRORS, OMISSIONS, CHANGE OF PRICE, RENTAL OR OTHER CONDITIONS, WITHDRAWAL WITHOUT NOTICE, AND TO ANY SPECIAL LISTING CONDITIONS IMPOSED BY THE PROPERTY OWNER(S). ANY PROJECTIONS, OPINIONS OR ESTIMATES ARE SUBJECT TO UNCERTAINTY AND DO NOT SIGNIFY CURRENT OR FUTURE PROPERTY PERFORMANCE.