

FOR SALE

1651 Wilkening Rd, Schaumburg



18,090 SF

**FREE STANDING FACILITY
HIGH IMAGE FLEX BUILDING**



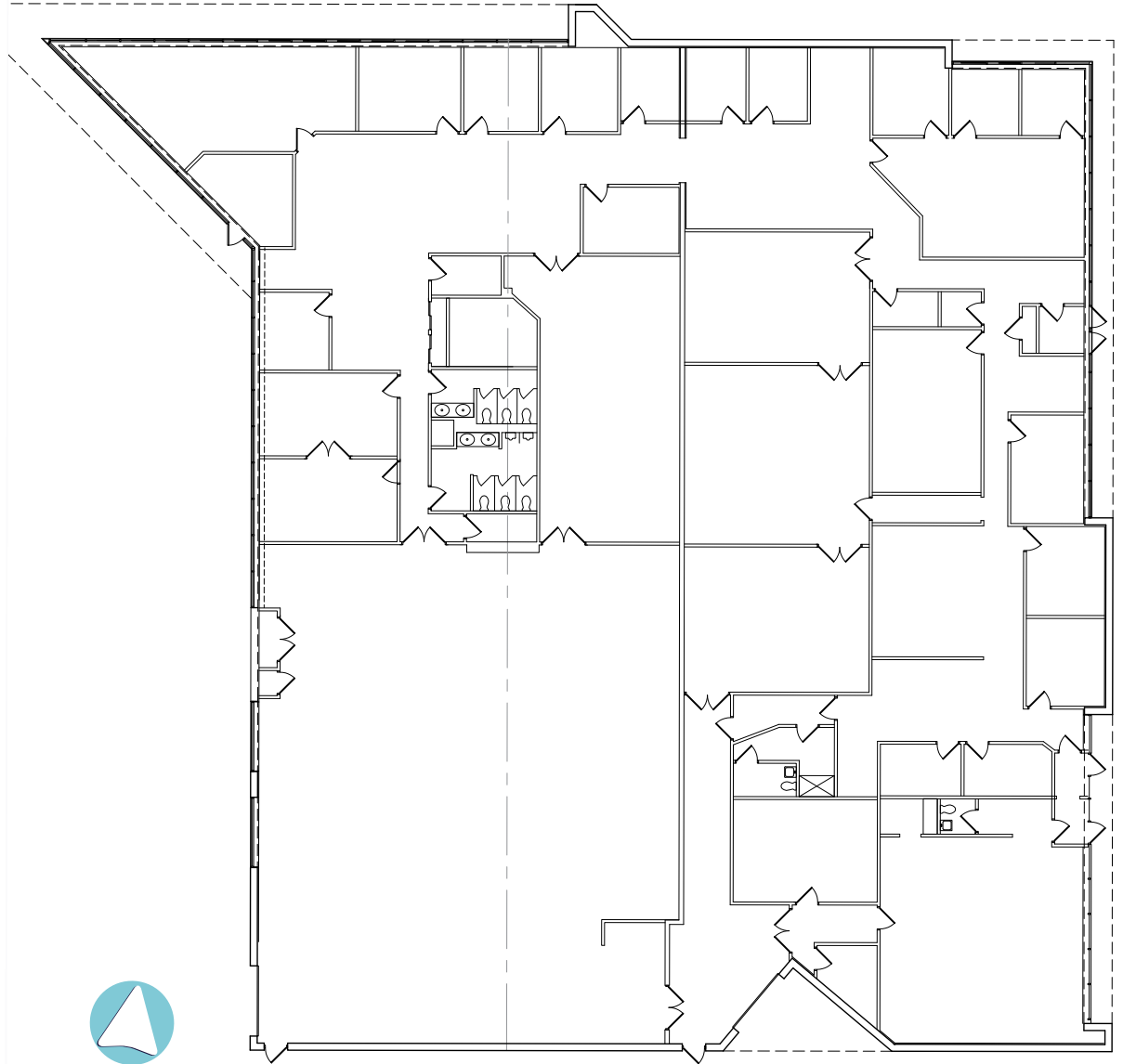
PROPERTY INFO

PROPERTY OVERVIEW

Building Size	18,090 SF
Office Size	±12,000 SF
Flex Warehouse Space	±6,090 SF
Year Built	1975
Site Size	1.38 Acre

PROPERTY FEATURES

Clear Height	14'
Dock Door	1
Drive-In Door	1
Car Parking	±54
HVAC	Fully Air Conditioned
Taxes (2024)	\$61,804 (\$3.42 PSF)



PROPERTY SITE PLAN

COMMERCE DRIVE

WILKENING ROAD

18,090 SF
FOR SALE



ACCESS MAP

Immediate access to I-90
& less than four miles to
I-90/I-290/IL-53 junction

I-90W & Roselle
1.5 miles

I-90E & Roselle
1 mile

I-90 & 53N
3.7 miles

I-90 & 290S
3.2 miles

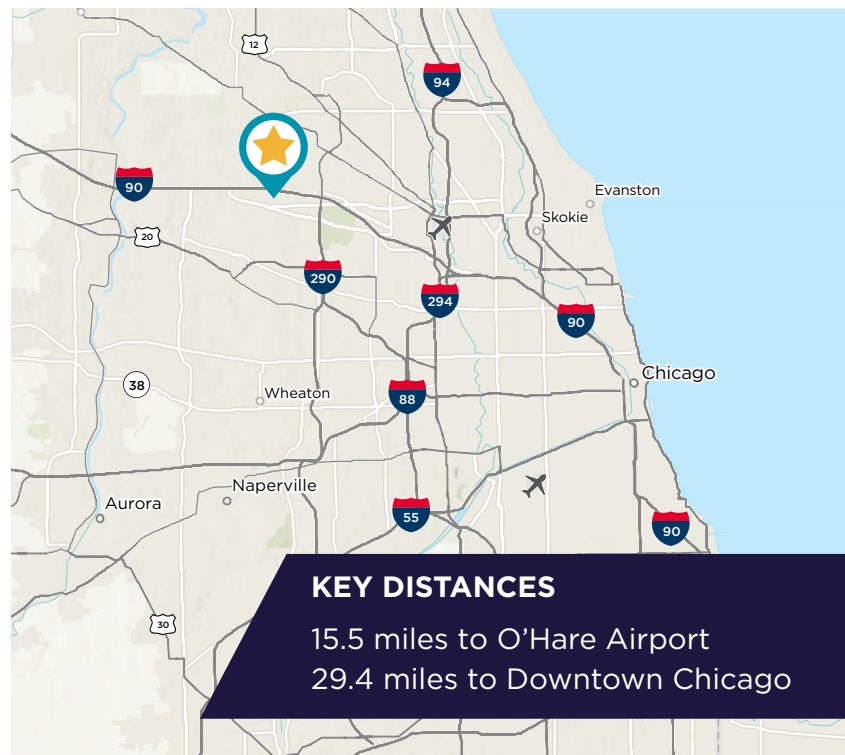




High Image Manufacturing Lab or Showroom

- 1,200 Amps at 120/208 Volts
- Air Lines
- Polished Concrete
- 1 Drive-in Door
- 1 Dock

FOR SALE // 1651 Wilkening Rd, Schaumburg



FOR SALE // 1651 Wilkening Rd, Schaumburg



Michael Magliano
Executive Managing Director
847 518 3259
michael.magliano@cushwake.com