

FOR SUBLEASE  
**14,250 SF**



151 McLEAN  
**ROMEIO, MICHIGAN**

---



## // BUILDING SPECS

### **BUILDING SIZE**

14,250 SF

### **INDUSTRIAL SPACE**

13,250 SF

### **OFFICE SPACE**

±1,000 SF

### **CLEAR HEIGHT**

18' -20'

### **LOADING DOCKS**

ONE (1) TRUCK WELL

### **GRADE DOORS**

TWO (2): (12' X 14')

### **PARKING**

±20 SPACES

### **SITE SIZE**

0.98 ACRES

### **YEAR BUILT**

2000

### **FLOOR DRAINS**

YES

### **ZONING**

INDUSTRIAL

### **COLUMN SPACING**

CLEAR SPAN

### **LIGHTING**

FLUORESCENT

### **POWER**

208/240V, 1000 AMPS  
(TBV)

### **HVAC**

UNIT/BLOWER, AC OFFICE  
ONLY

### **FIRE SUPPRESSION**

N/A

### **SUBLEASE TERMS:**

TERM: SEPTEMBER 2028 -  
LONGER POSSIBLE

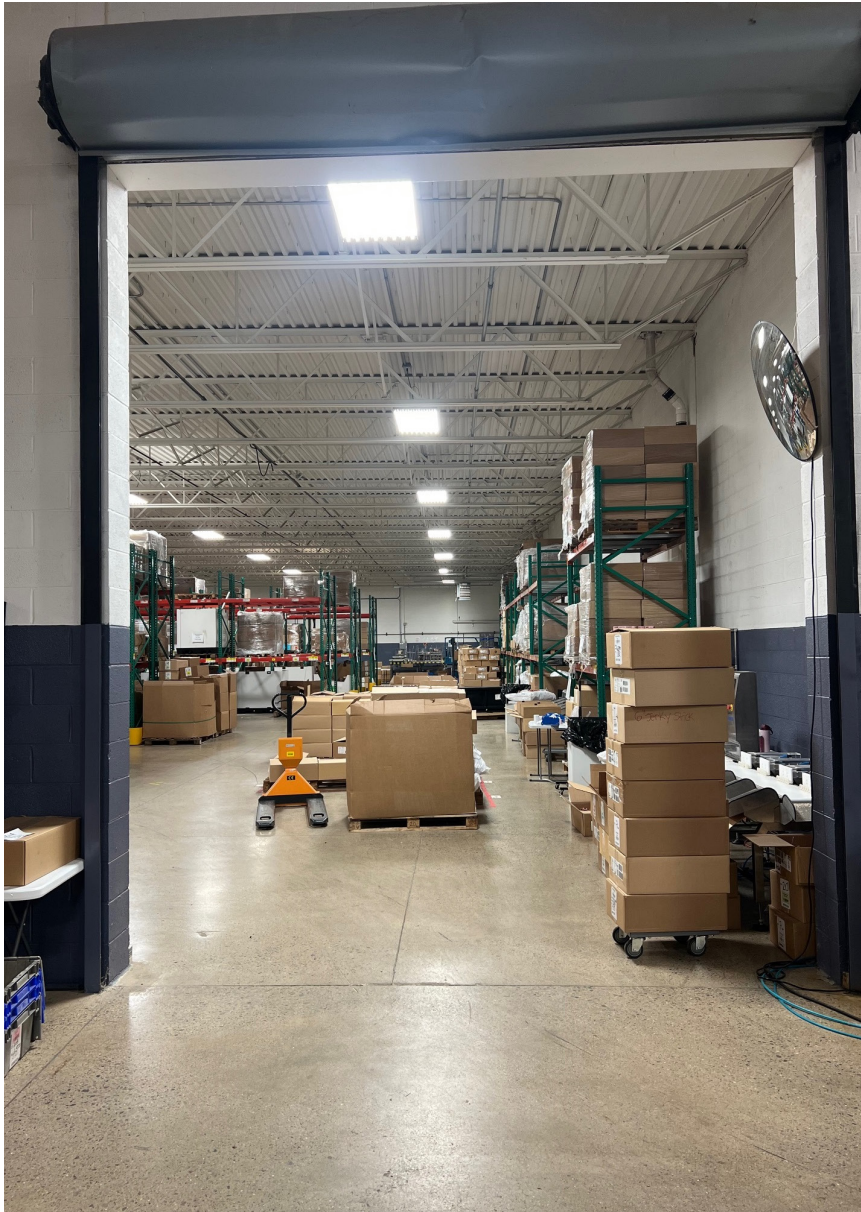
### **SUBLEASE RATE:**

\$8.25/SF NNN  
OPEX: ±\$2.25/SF

// **151 McLEAN DRIVE**

Romeo, Michigan 48065

# // GALLERY



# 151 McLEAN

## ROMEIO, MICHIGAN



### CONTACT

CONNER SALSBERY  
Director  
+1 248 358 6114  
[conner.salsberry@cushwake.com](mailto:conner.salsberry@cushwake.com)

TONY AVENDT  
Executive Director  
+1 248 358 6115  
[tony.avendt@cushwake.com](mailto:tony.avendt@cushwake.com)

©2026 Cushman & Wakefield. All rights reserved. The information contained in this communication is strictly confidential. This information has been obtained from sources believed to be reliable but has not been verified. NO WARRANTY OR REPRESENTATION, EXPRESS OR IMPLIED, IS MADE AS TO THE CONDITION OF THE PROPERTY (OR PROPERTIES) REFERENCED HEREIN OR AS TO THE ACCURACY OR COMPLETENESS OF THE INFORMATION CONTAINED HEREIN, AND SAME IS SUBMITTED SUBJECT TO ERRORS, OMISSIONS, CHANGE OF PRICE, RENTAL OR OTHER CONDITIONS, WITHDRAWAL WITHOUT NOTICE, AND TO ANY SPECIAL LISTING CONDITIONS IMPOSED BY THE PROPERTY OWNER(S). ANY PROJECTIONS, OPINIONS OR ESTIMATES ARE SUBJECT TO UNCERTAINTY AND DO NOT SIGNIFY CURRENT OR FUTURE PROPERTY PERFORMANCE.