

# Freestanding Medical Office Building

For Lease | 24025 Lorain Road, North Olmsted, Ohio 44070



# 24025 Lorain Road

- Elite branding opportunity for professional practice
- Brand new clinical build-out in place, completely refurbished and has not been occupied since
- High end finishes throughout
- Huge parking field
- High visibility site in densely populated North Olmsted commercial sub-market

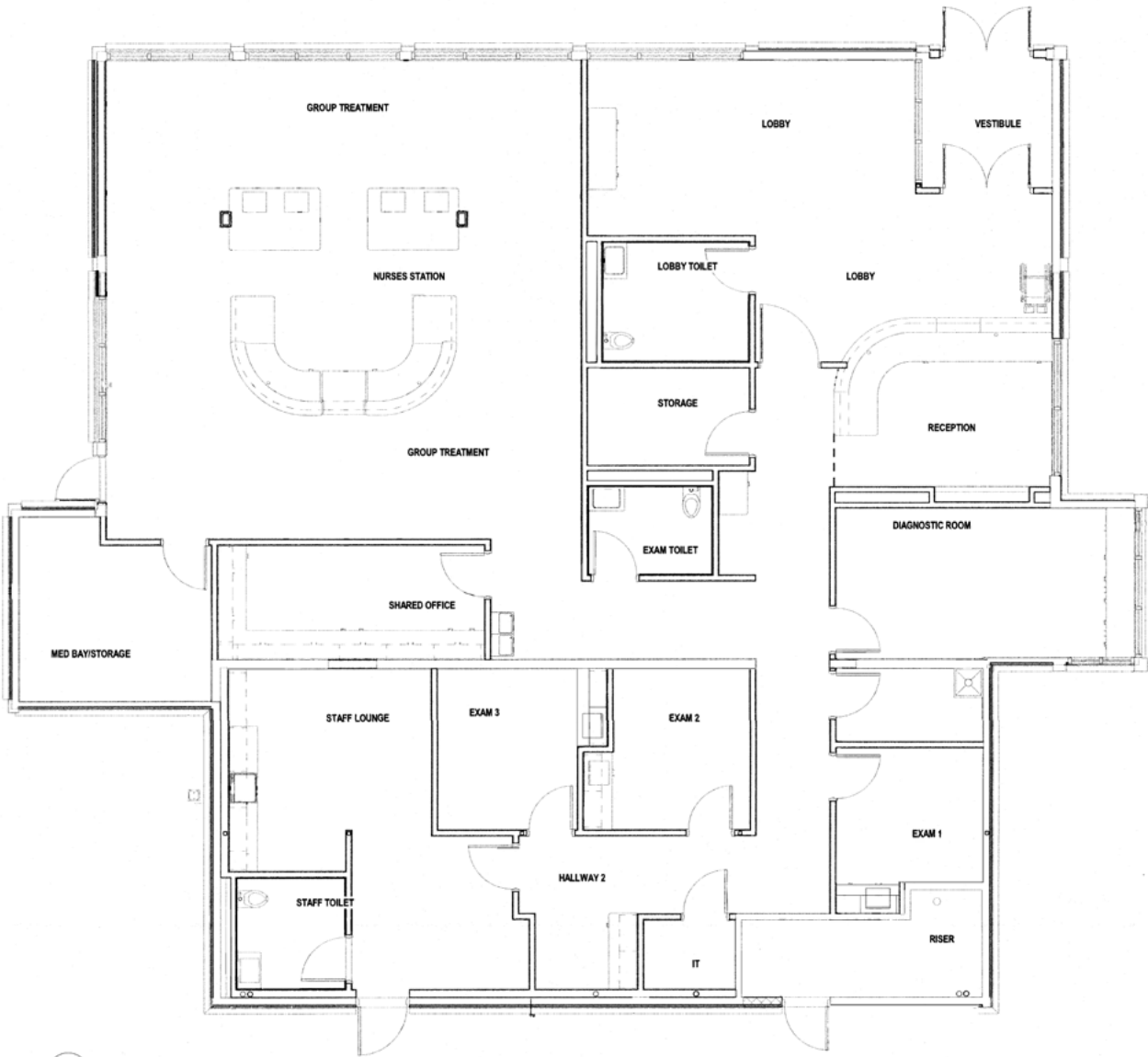
**Lease Rate: Contact Brokers**

## Quick Stats

Building Size	4,137 SF
Year Renovated	2025
# of Floors	One (1)
Land Area	2.6 AC
Parking Spaces	43 Surface
Primary Use	Medical Office



# Floor Plan



Scale: 1/4" = 1'-0"

4,137 SF

# Great Northern North Olmsted, Ohio



**182,677**  
Population  
(2025 | 5 Mile)

**44.1**  
Median Age  
(2025 | 5 Mile)

**81,035**  
Households  
(2025 | 5 Mile)

**\$131,795**  
Household Income  
(2025 | 5 Mile)

**8,327**  
Total Businesses  
(2025 | 5 Mile)

**98,394**  
Total Employees  
(2025 | 5 Mile)



**24025 LORAIN ROAD,  
NORTH OL MSTED, OHIO 44070**

**ERIC SCHREIBMAN, J.D.**

Vice President  
eschreibman@crescorealestate.com  
+1 216 525 1471

**MAUREEN ANTER-RESSLER**

Vice President  
mressler@crescorealestate.com  
+1 216 525 1494



**Cushman & Wakefield | CRESCO**  
6100 Rockside Woods Blvd, Suite 200  
Cleveland, Ohio 44131

[crescorealestate.com](http://crescorealestate.com)

©2026 Cushman & Wakefield. All rights reserved. The information contained in this communication is strictly confidential. This information has been obtained from sources believed to be reliable but has not been verified. NO WARRANTY OR REPRESENTATION, EXPRESS OR IMPLIED, IS MADE AS TO THE CONDITION OF THE PROPERTY (OR PROPERTIES) REFERENCED HEREIN OR AS TO THE ACCURACY OR COMPLETENESS OF THE INFORMATION CONTAINED HEREIN, AND SAME IS SUBMITTED SUBJECT TO ERRORS, OMISSIONS, CHANGE OF PRICE, RENTAL OR OTHER CONDITIONS, WITHDRAWAL, WITHOUT NOTICE, AND TO ANY SPECIAL LISTING CONDITIONS IMPOSED BY THE PROPERTY OWNER(S). ANY PROJECTIONS, OPINIONS OR ESTIMATES ARE SUBJECT TO UNCERTAINTY AND DO NOT SIGNIFY CURRENT OR FUTURE PROPERTY PERFORMANCE.