

R&D / FLEX SPACE FOR LEASE

1050-1054 COMMERCIAL STREET, SAN CARLOS, CA



PROPERTY HIGHLIGHTS

- 21,700 SF Total
 - 1050 Commercial: \pm 10,600 SF
 - 1052-1054 Commercial: \pm 11,000 SF
- Fully Sprinklered
- Sky Lights Throughout
- 100% HVAC
- Gated/Secured Complex
- Total power: 650 Amps, 277/480V, 3 Phase
- 2/1000 Parking Ratio
- Great Location
 - 0.5 Miles to Caltrain Station
 - 0.2 Miles to Amenity Rich Laurel Street

For information, please contact:

JAY LESLIE
Executive Director
Telephone +1 650 576 2888
jay.leslie@cushwake.com
CA RE LIC. #01244555

1350 Old Bayshore Hwy., Ste 900
Burlingame, CA 94010
cushmanwakefield.com

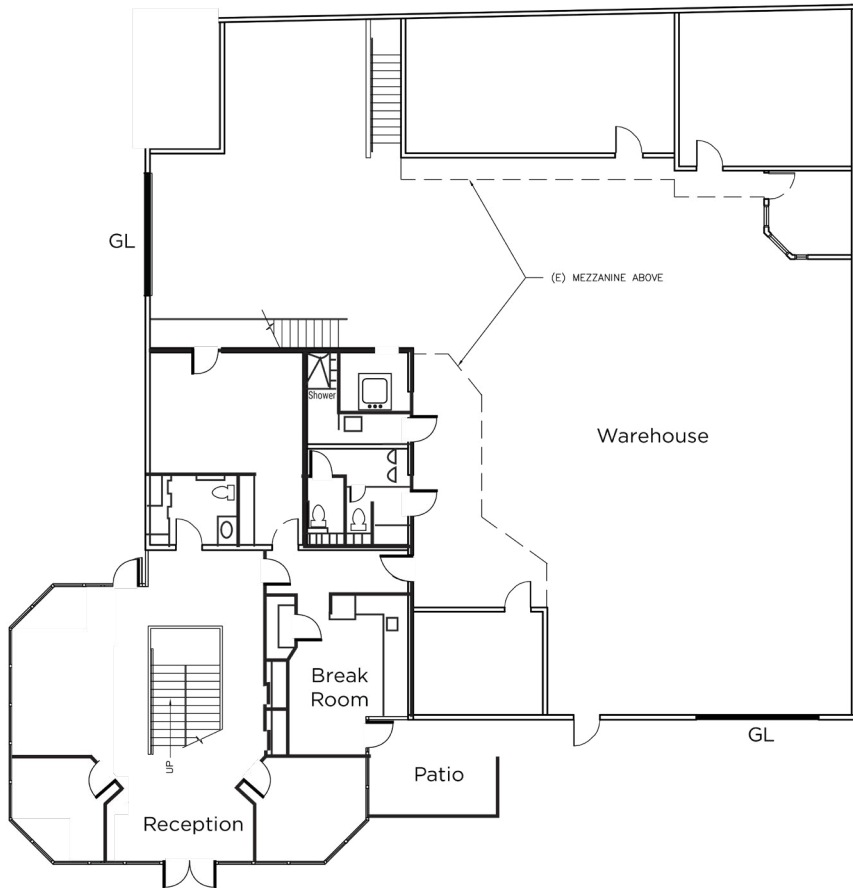
R&D / FLEX SPACE FOR LEASE

1050-1054 COMMERCIAL STREET, SAN CARLOS, CA

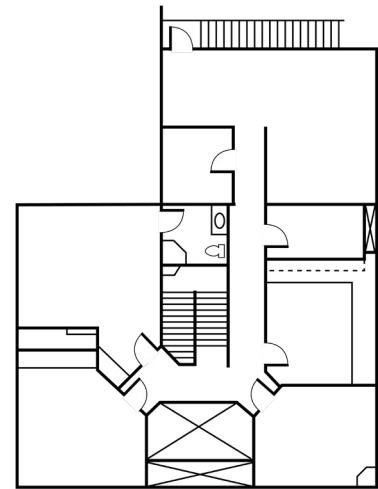


1050 | FLOOR PLAN

FIRST FLOOR



SECOND FLOOR



- ±10,600 SF total
- ±4,823 SF of office
- ±3,440 SF of bonus mezzanine
- Power: 200 Amps, 277/480V, 3-Phase

- 2 grade level doors (14' height)
- 100% HVAC
- Can be combined with 1052-1054 for ±21,700 SF

R&D / FLEX SPACE FOR LEASE

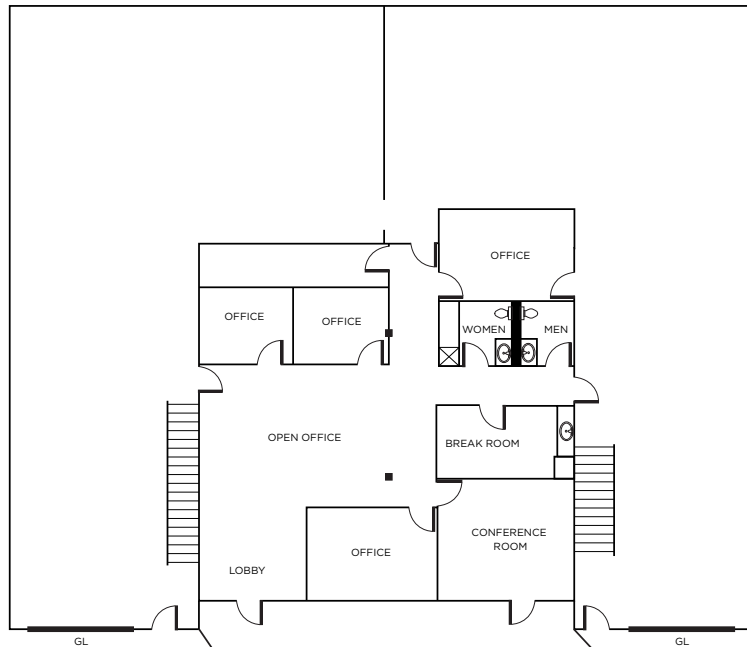
1050-1054 COMMERCIAL STREET, SAN CARLOS, CA



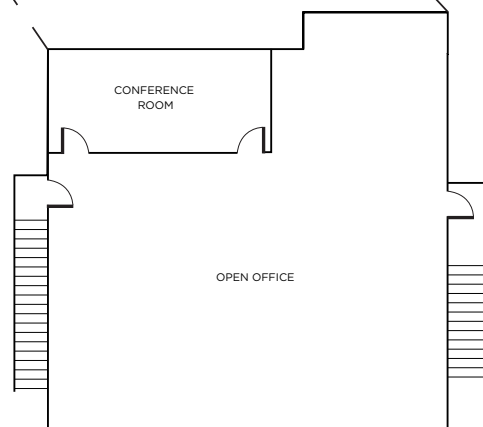
1052 - 1054 | FLOOR PLAN

1052-1054
(±11,100 SF TOTAL)

FIRST FLOOR



SECOND FLOOR



- ±11,100 SF total
- ±5,850 SF of office
- Power: 450 Amps, 277/480V, 3-Phase
- 2 grade level doors (14' height)
- 100% HVAC
- Can be combined with 1050 for ±21,700 SF

R&D / FLEX SPACE FOR LEASE

1050-1054 COMMERCIAL STREET, SAN CARLOS, CA



LOCATION AND AMENITIES



R&D / FLEX SPACE FOR LEASE

1050-1054 COMMERCIAL STREET, SAN CARLOS, CA



For information, please contact:

JAY LESLIE
Executive Director
Telephone +1 650 576 2888
jay.leslie@cushwake.com
CA RE LIC. #01244555

1350 Old Bayshore Hwy., Ste. 900
Burlingame, CA 94010
cushmanwakefield.com

©2026 Cushman & Wakefield. All rights reserved. The information contained in this communication is strictly confidential. This information has been obtained from sources believed to be reliable but has not been verified. NO WARRANTY OR REPRESENTATION, EXPRESS OR IMPLIED, IS MADE AS TO THE CONDITION OF THE PROPERTY (OR PROPERTIES) REFERENCED HEREIN OR AS TO THE ACCURACY OR COMPLETENESS OF THE INFORMATION CONTAINED HEREIN, AND SAME IS SUBMITTED SUBJECT TO ERRORS, OMISSIONS, CHANGE OF PRICE, RENTAL OR OTHER CONDITIONS, WITHDRAWAL WITHOUT NOTICE, AND TO ANY SPECIAL LISTING CONDITIONS IMPOSED BY THE PROPERTY OWNER(S). ANY PROJECTIONS, OPINIONS OR ESTIMATES ARE SUBJECT TO UNCERTAINTY AND DO NOT SIGNIFY CURRENT OR FUTURE PROPERTY PERFORMANCE. PD-190496 V8