

AUTO SERVICE CENTER FOR SUBLEASE

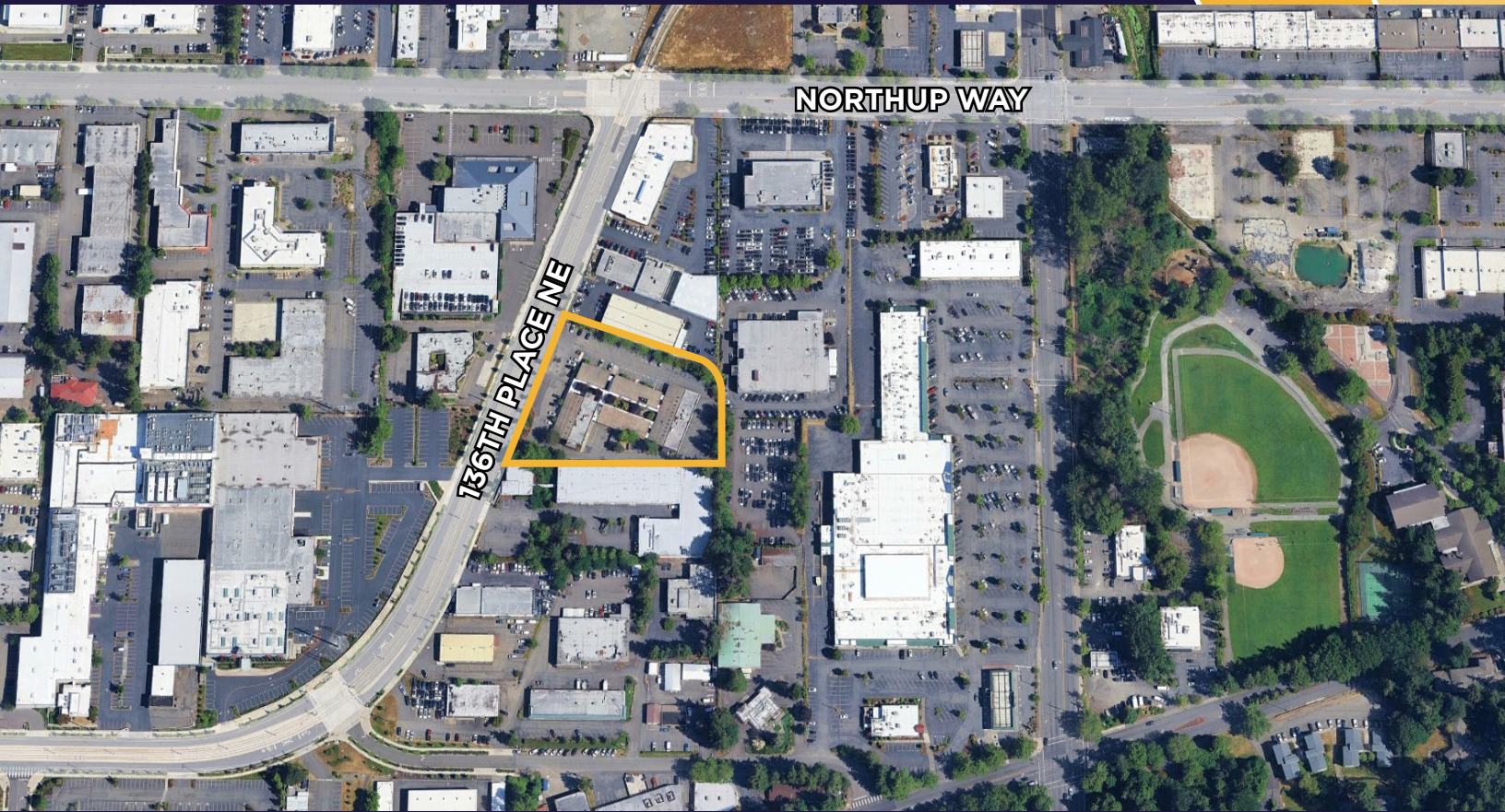
1808 136TH PLACE NE

BELLEVUE, WA 98005

11,050 SF AVAILABLE



PROPERTY HIGHLIGHTS



LISTING INFORMATION

AVAILABLE SF

11,050 SF

SUBLEASE RATE

Call Broker

SUBLEASE TERM

Through October 31, 2029

ZONING

BR-CR

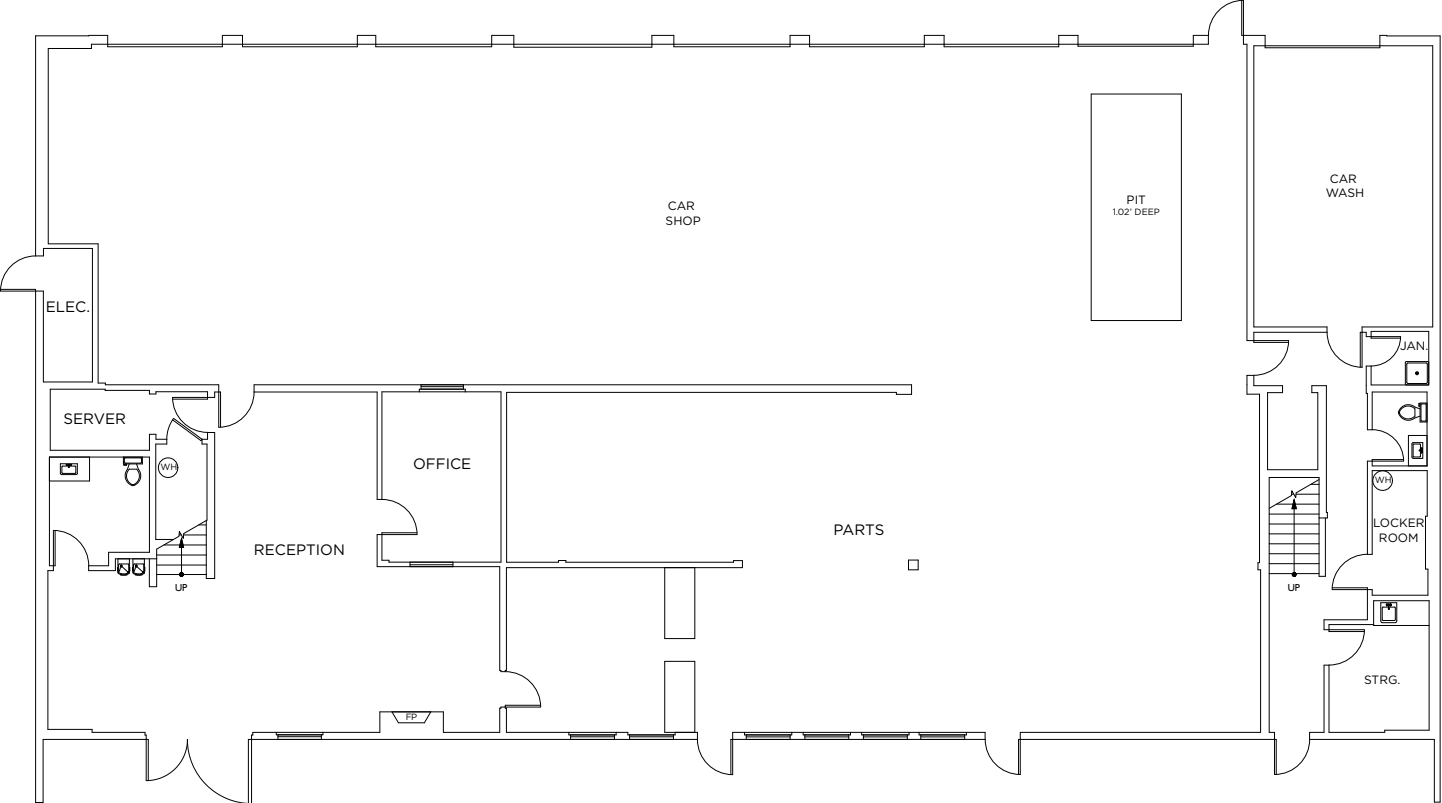
COMMENTS

Conveniently located between Northrup and Bel-Red, Building 1808 offers a seven-bay auto service center with luxury service office.

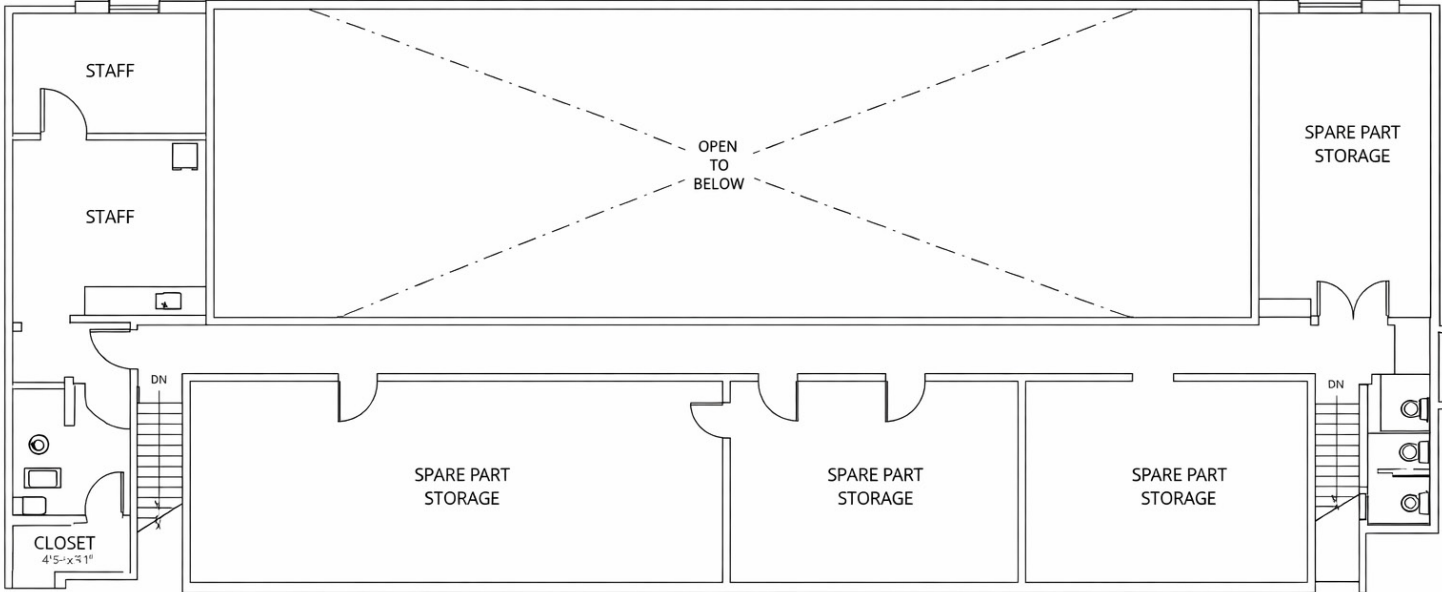
- Access from 136th Place NE
- Office adjacent to Caspian Restaurant
- Seven deep service bays and two detail bays
- Walking distance to restaurants and shopping on Northrup, 140th, and Bel-Red
- Grandfathered in as a service center

FLOOR PLAN

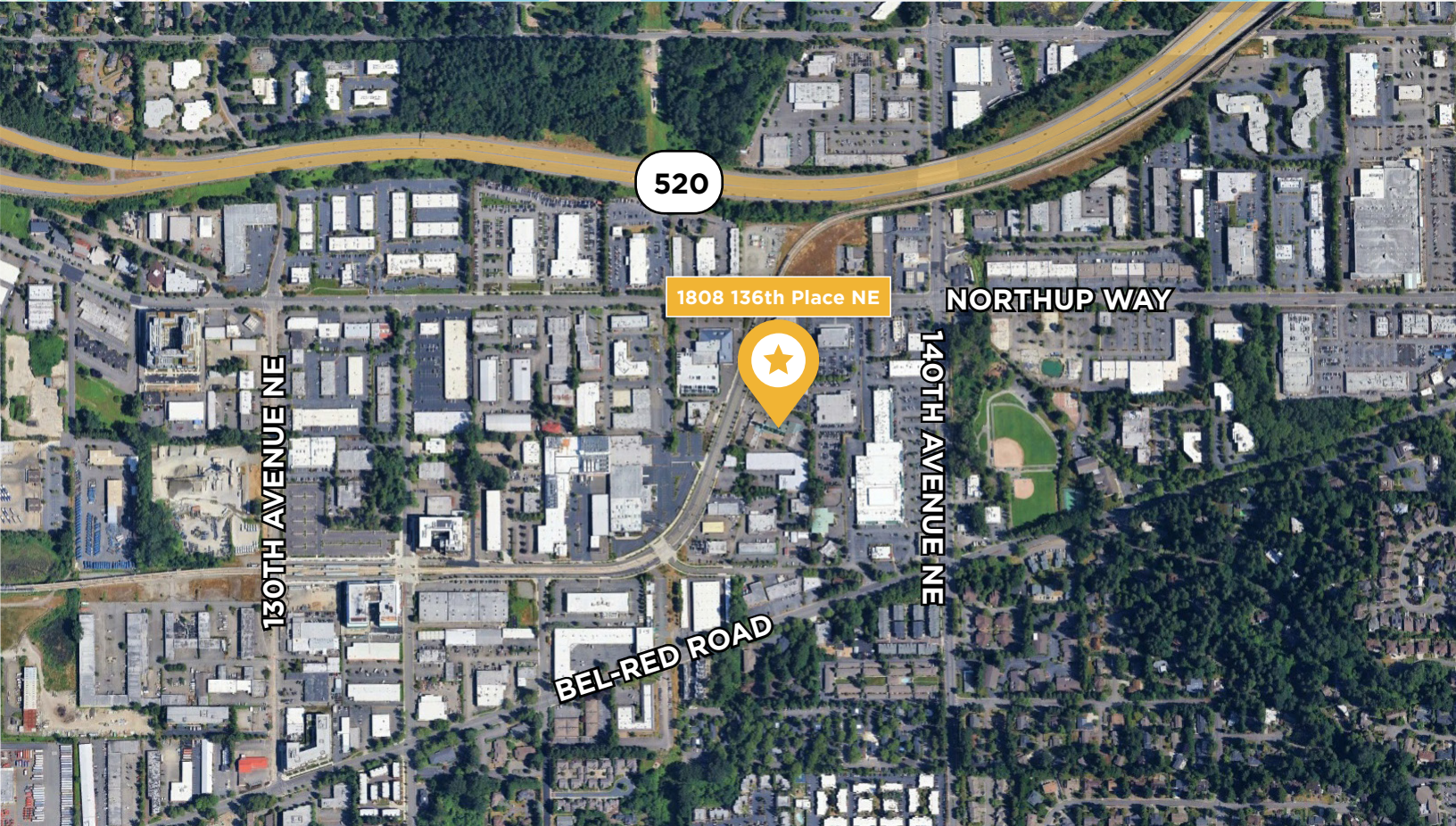
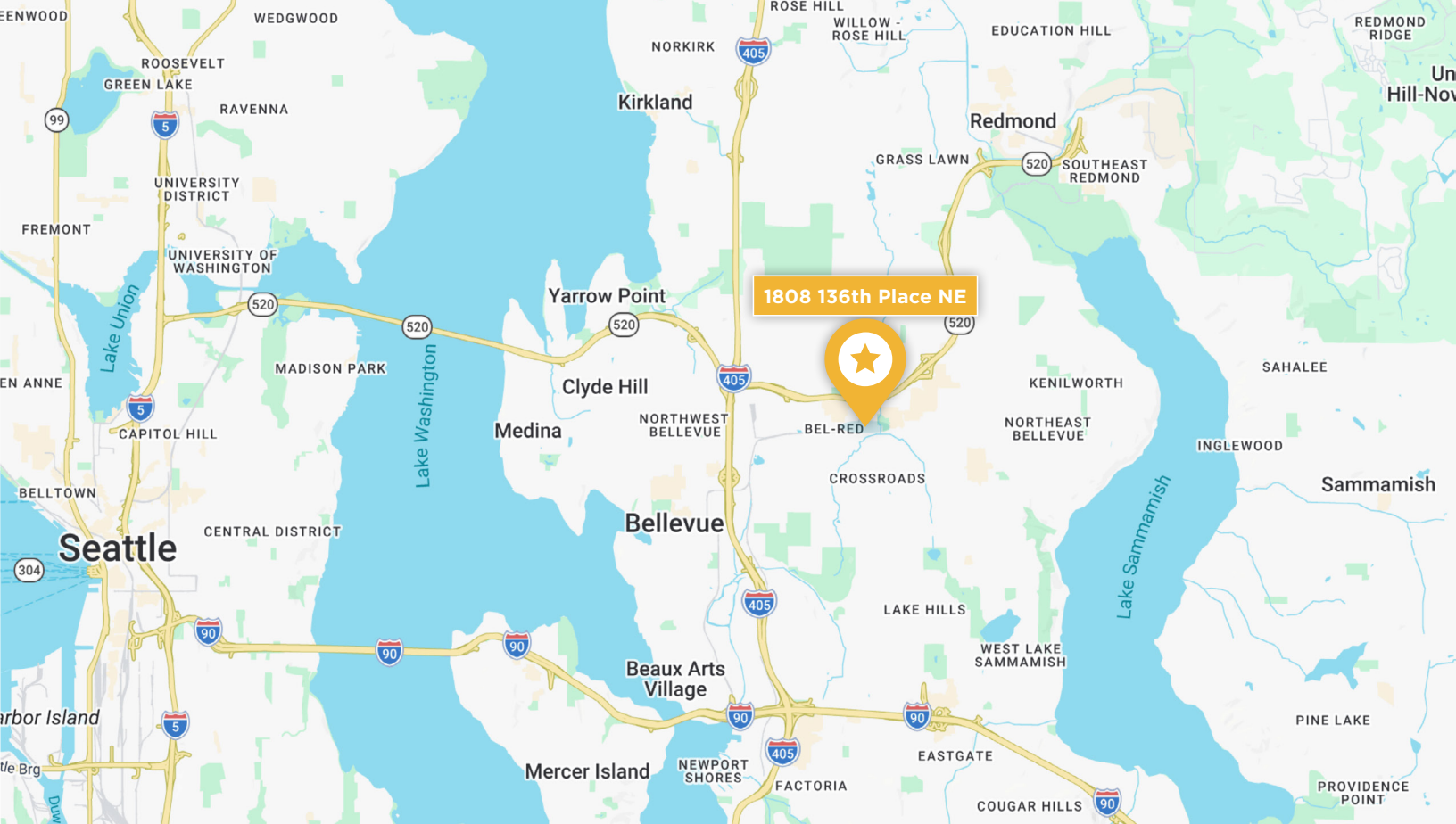
GROUND FLOOR



SECOND FLOOR



LOCATION MAP



NEARBY AMENITIES

520



Cadillac



CHEVROLET



ACURA

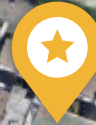


ASTON MARTIN

NORTHUP WAY



1808 136th Place NE



136TH PLACE NE



©2026 Cushman & Wakefield. All rights reserved. The information contained in this communication is strictly confidential. This information has been obtained from sources believed to be reliable but has not been verified. NO WARRANTY OR REPRESENTATION, EXPRESS OR IMPLIED, IS MADE AS TO THE CONDITION OF THE PROPERTY (OR PROPERTIES) REFERENCED HEREIN OR AS TO THE ACCURACY OR COMPLETENESS OF THE INFORMATION CONTAINED HEREIN, AND SAME IS SUBMITTED SUBJECT TO ERRORS, OMISSIONS, CHANGE OF PRICE, RENTAL OR OTHER CONDITIONS, WITHDRAWAL WITHOUT NOTICE, AND TO ANY SPECIAL LISTING CONDITIONS IMPOSED BY THE PROPERTY OWNER(S). ANY PROJECTIONS, OPINIONS OR ESTIMATES ARE SUBJECT TO UNCERTAINTY AND DO NOT SIGNIFY CURRENT OR FUTURE PROPERTY PERFORMANCE. PD-186426

For more information,
please contact:

Carson Scott
Senior Associate
+1 206 215 9781
carson.scott@cushwake.com

Jim Reed, Dual SIOR
Executive Managing Director
+1 425 679 1681
jim.reed@cushwake.com