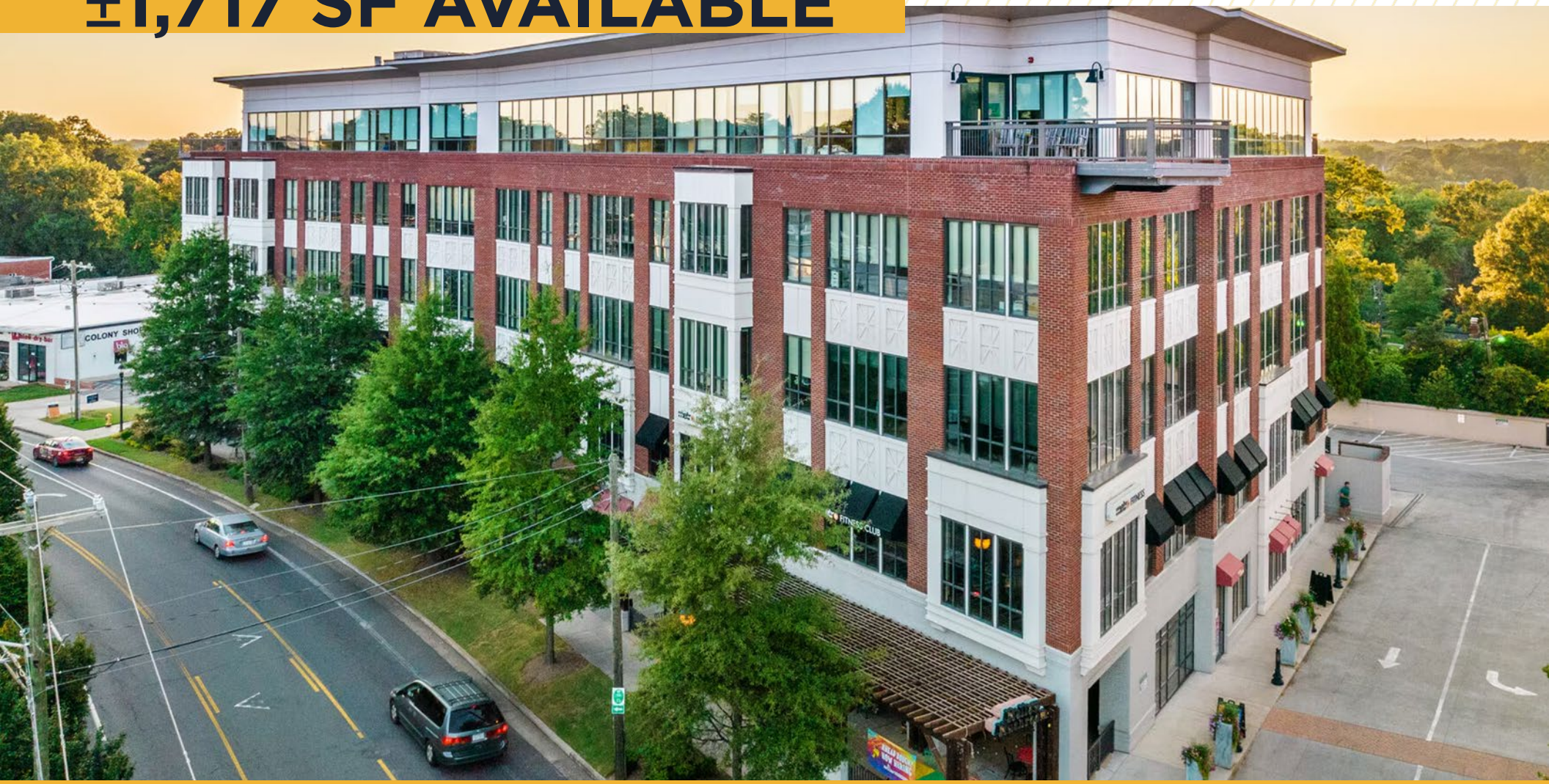


FOR SUBLEASE  
±1,717 SF AVAILABLE



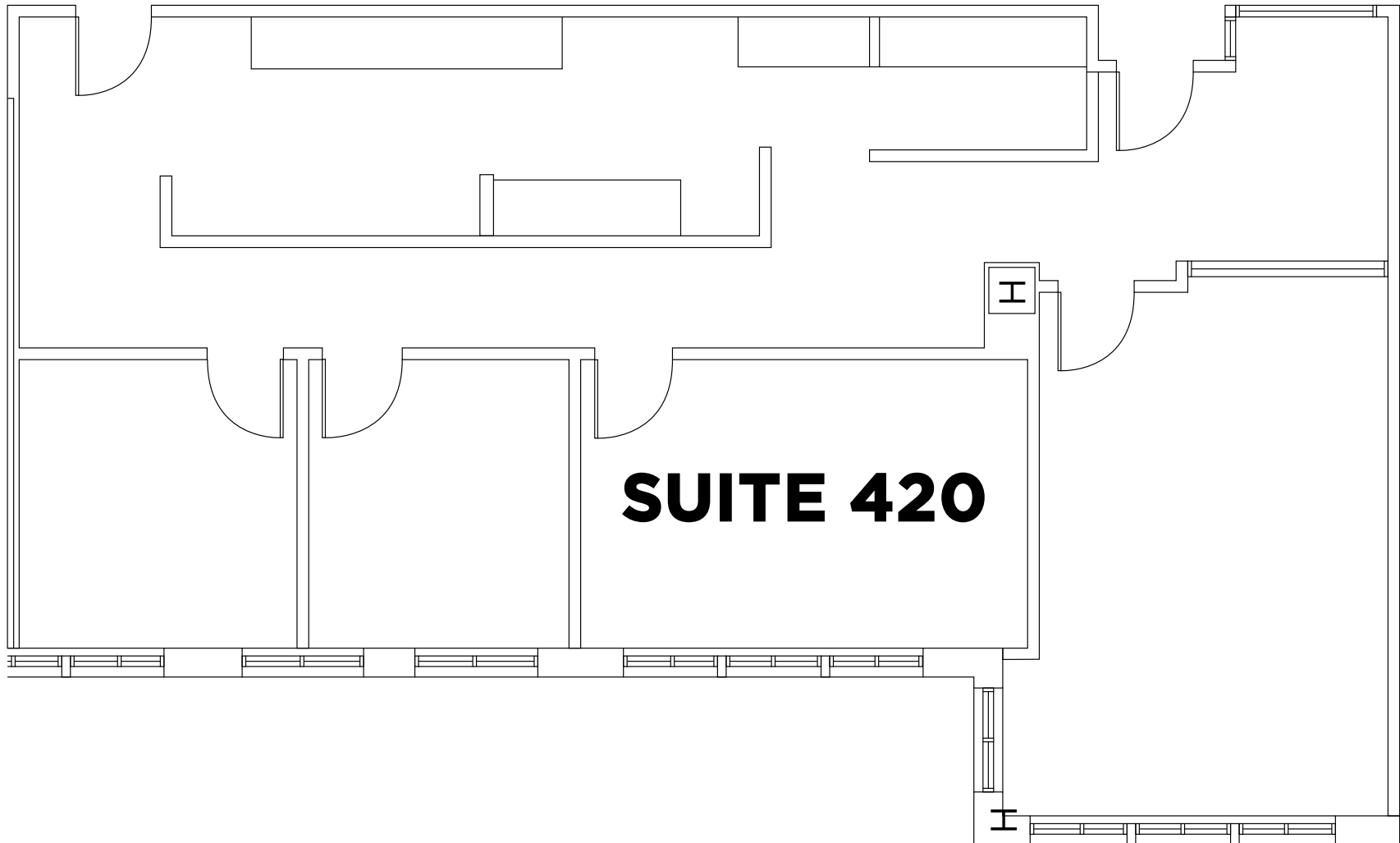
SUITE 420  
**2820 SELWYN AVE.**  
TRANQUIL COURT



CUSHMAN &  
WAKEFIELD

# FLOOR PLAN

**±1,717 SF FOR SUBLEASE**



- LXP: 01/31/2027
- Rate: Negotiable

- Furniture: TBD
- Parking: 3.9/1000

- Reception, Conference
- 3 Offices, Copy/Work, Break

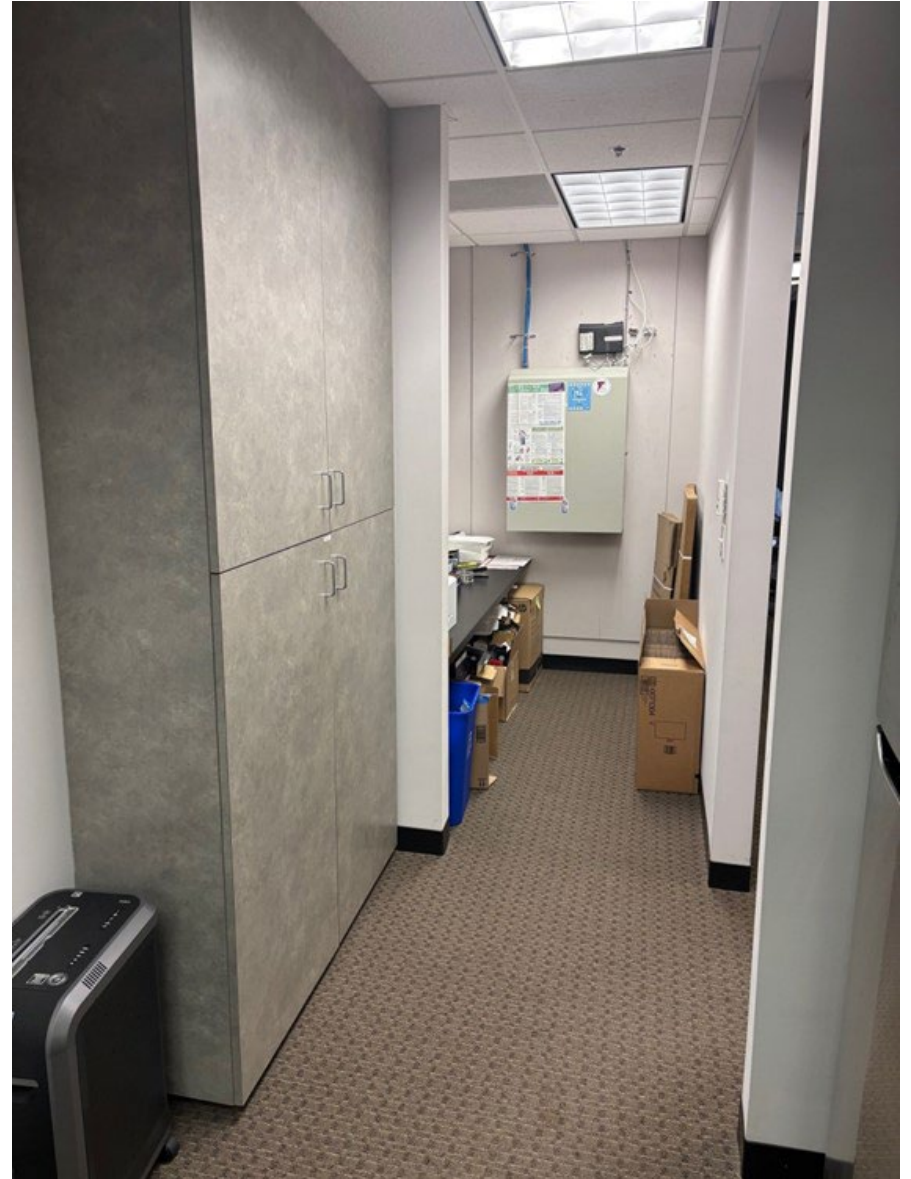


Suite 420, 2820 Selwyn Avenue, Charlotte, NC 28209

# PROPERTY PHOTOS

**±1,717 SF FOR SUBLEASE**

**KITCHEN & STORAGE**

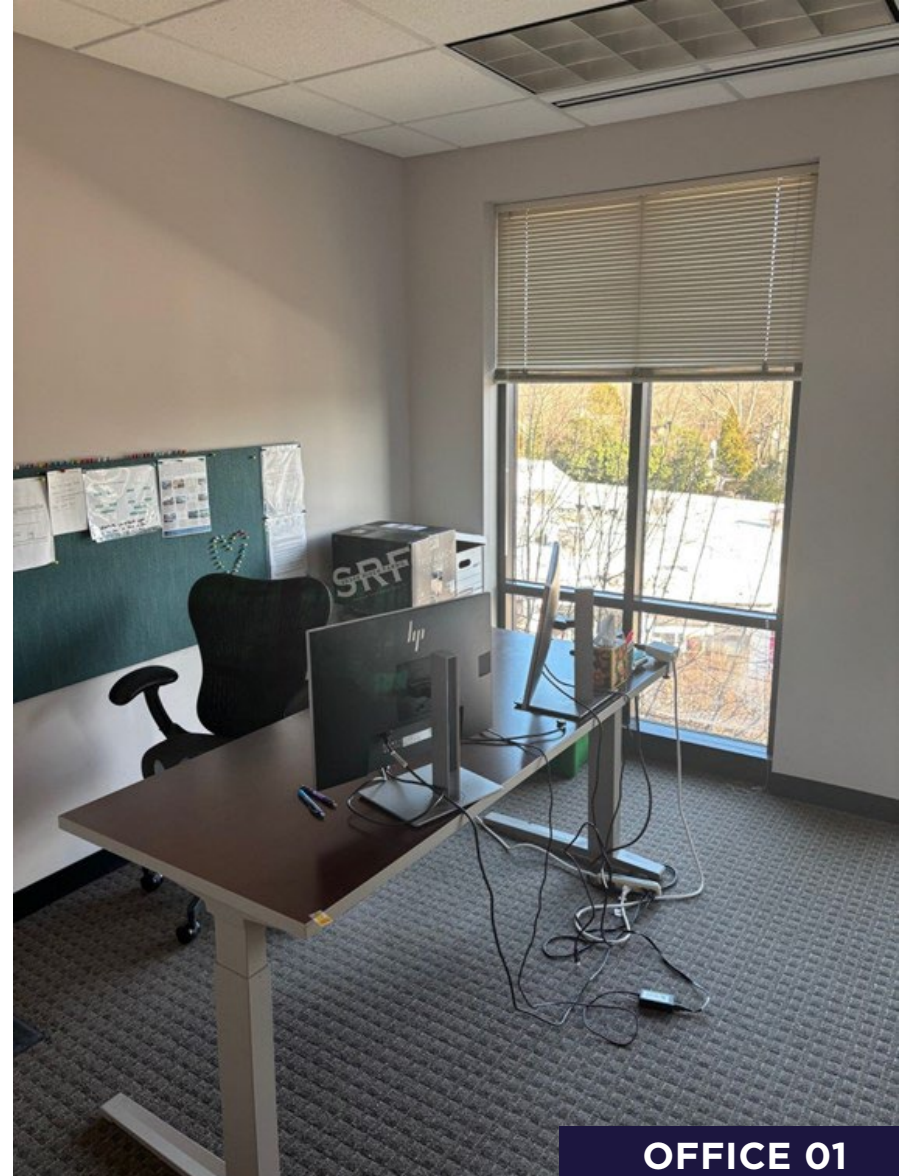


Suite 420, 2820 Selwyn Avenue, Charlotte, NC 28209

# PROPERTY PHOTOS

**±1,717 SF FOR SUBLEASE**

**INTERIOR**

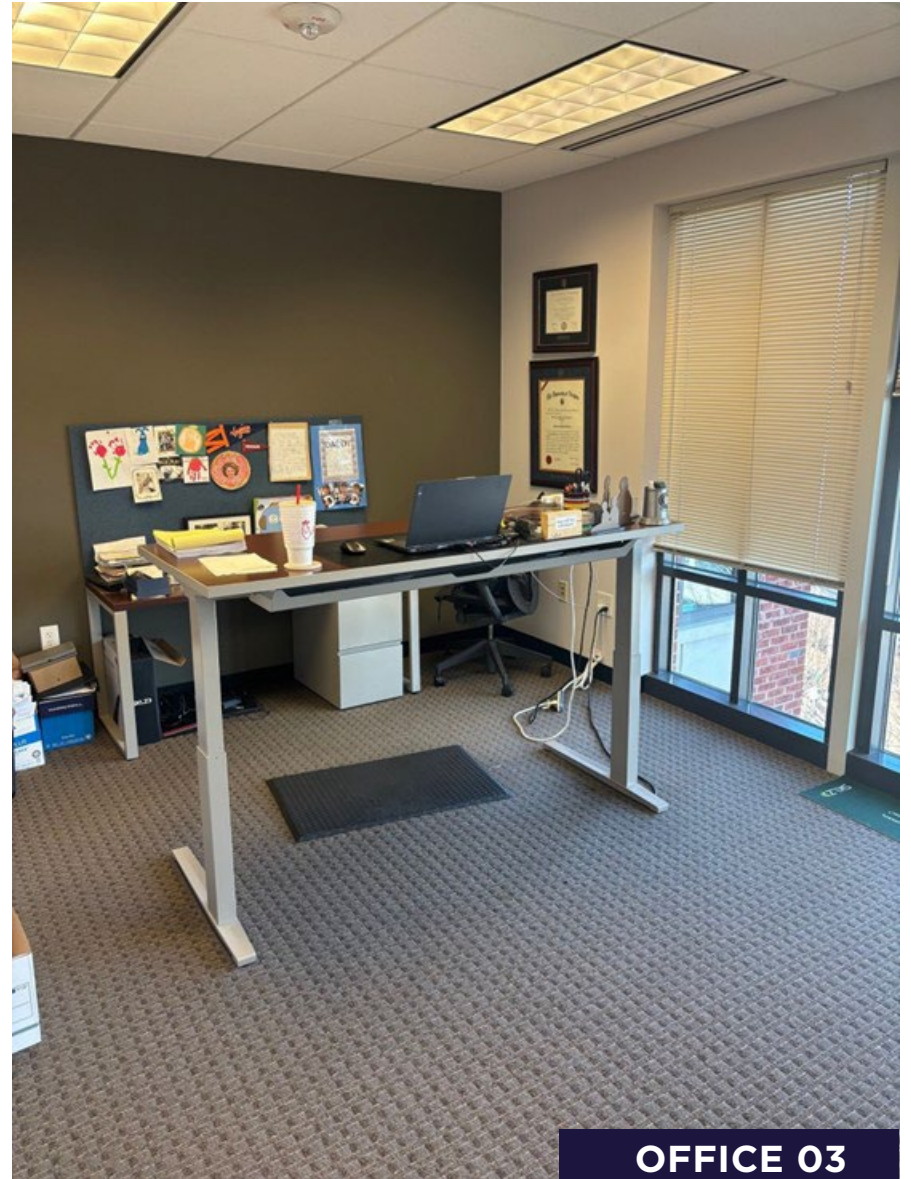
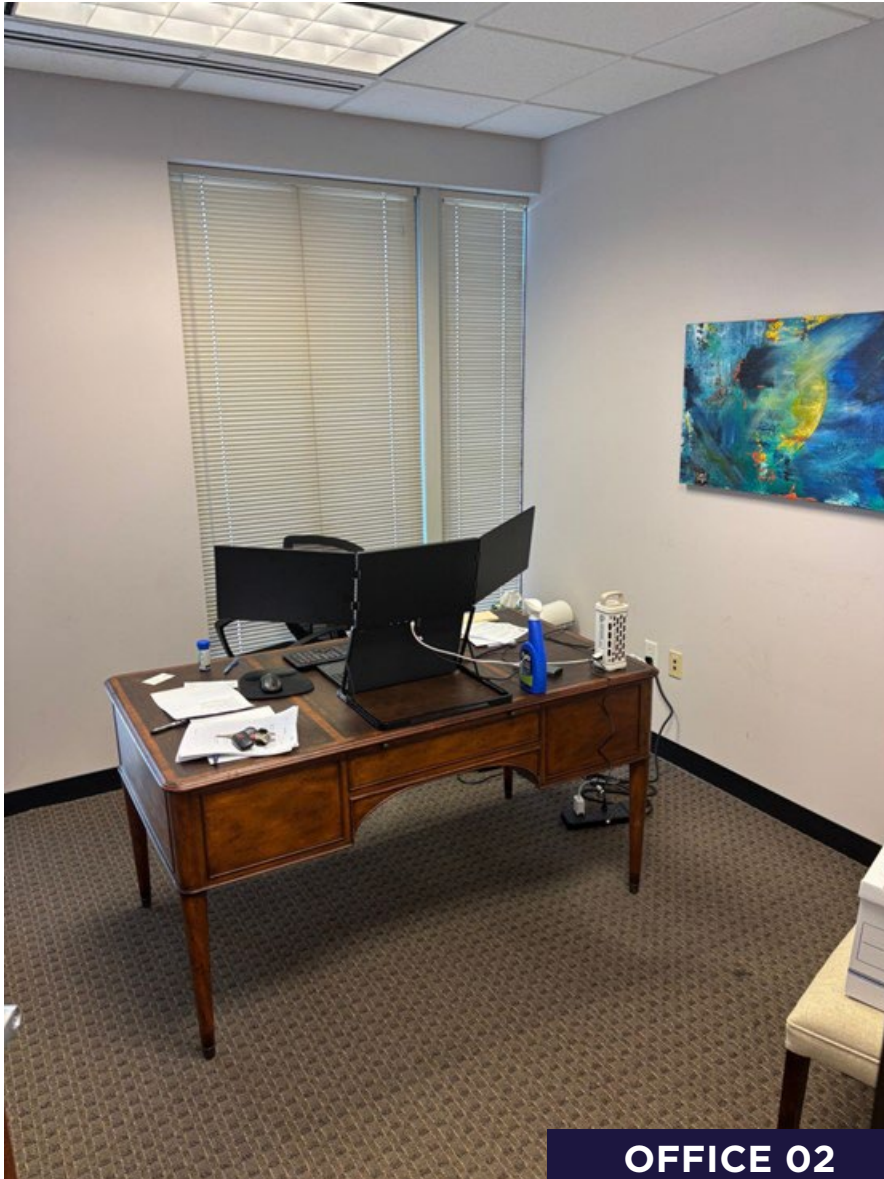


Suite 420, 2820 Selwyn Avenue, Charlotte, NC 28209

# PROPERTY PHOTOS

**±1,717 SF FOR SUBLEASE**

**INTERIOR**





## CONTACT INFORMATION

**TULLY COYLE**  
Associate  
+1 704 804 5065  
tully.coyle@cushwake.com

300 South Tryon St.  
Suite 1110  
Charlotte, NC 28202  
+1 704 375 7771

[cushmanwakefield.com](http://cushmanwakefield.com)

**SUITE 420, 2820 SELWYN AVE.  
CHARLOTTE, NC 28209**



©2026 Cushman & Wakefield. All rights reserved. The information contained in this communication is strictly confidential. This information has been obtained from sources believed to be reliable but has not been verified. NO WARRANTY OR REPRESENTATION, EXPRESS OR IMPLIED, IS MADE AS TO THE CONDITION OF THE PROPERTY (OR PROPERTIES) REFERENCED HEREIN OR AS TO THE ACCURACY OR COMPLETENESS OF THE INFORMATION CONTAINED HEREIN, AND SAME IS SUBMITTED SUBJECT TO ERRORS, OMISSIONS, CHANGE OF PRICE, RENTAL OR OTHER CONDITIONS, WITHDRAWAL WITHOUT NOTICE, AND TO ANY SPECIAL LISTING CONDITIONS IMPOSED BY THE PROPERTY OWNER(S). ANY PROJECTIONS, OPINIONS OR ESTIMATES ARE SUBJECT TO UNCERTAINTY AND DO NOT SIGNIFY CURRENT OR FUTURE PROPERTY PERFORMANCE. PD-190411-V1