



**CUSHMAN &
WAKEFIELD**

SUBLEASE SPACE AVAILABLE
3675 Mt. Diablo Blvd.
DESCO PLAZA III, Lafayette, CA



Property Highlights

- Walking distance to BART, Restaurants & Business Services
- 3.5 / 1,000 SF Parking Ratio
- Local Ownership & On-Site Property Management
- Excellent Highway 24 Access
- Large Common Conference Room
- Professional Business Environment
- Flexible and Functional Floor Plans
- Rental Rate: \$3.40 PSF

Available Space

3rd Floor	±5,676 SF
Suite 300	Can be divided to ±2,791 or ±2,885
Term through:	Sept 2019 <i>Longer term available</i>
Rental Rate:	\$2.75 PSF

For more information, please contact:

Dan Moylan
Director

+1 925 627 2887

dan.moylan@cushwake.com

LIC #00845782

Tim Hogan
Vice President

+1 925 627 2884

tim.hogan@cushwake.com

LIC #01375367

1333 N. California Blvd., Suite 500
Walnut Creek, CA 94596

T: +1 925 935 0770

F: +1 925 935 3409

cushmanwakefield.com

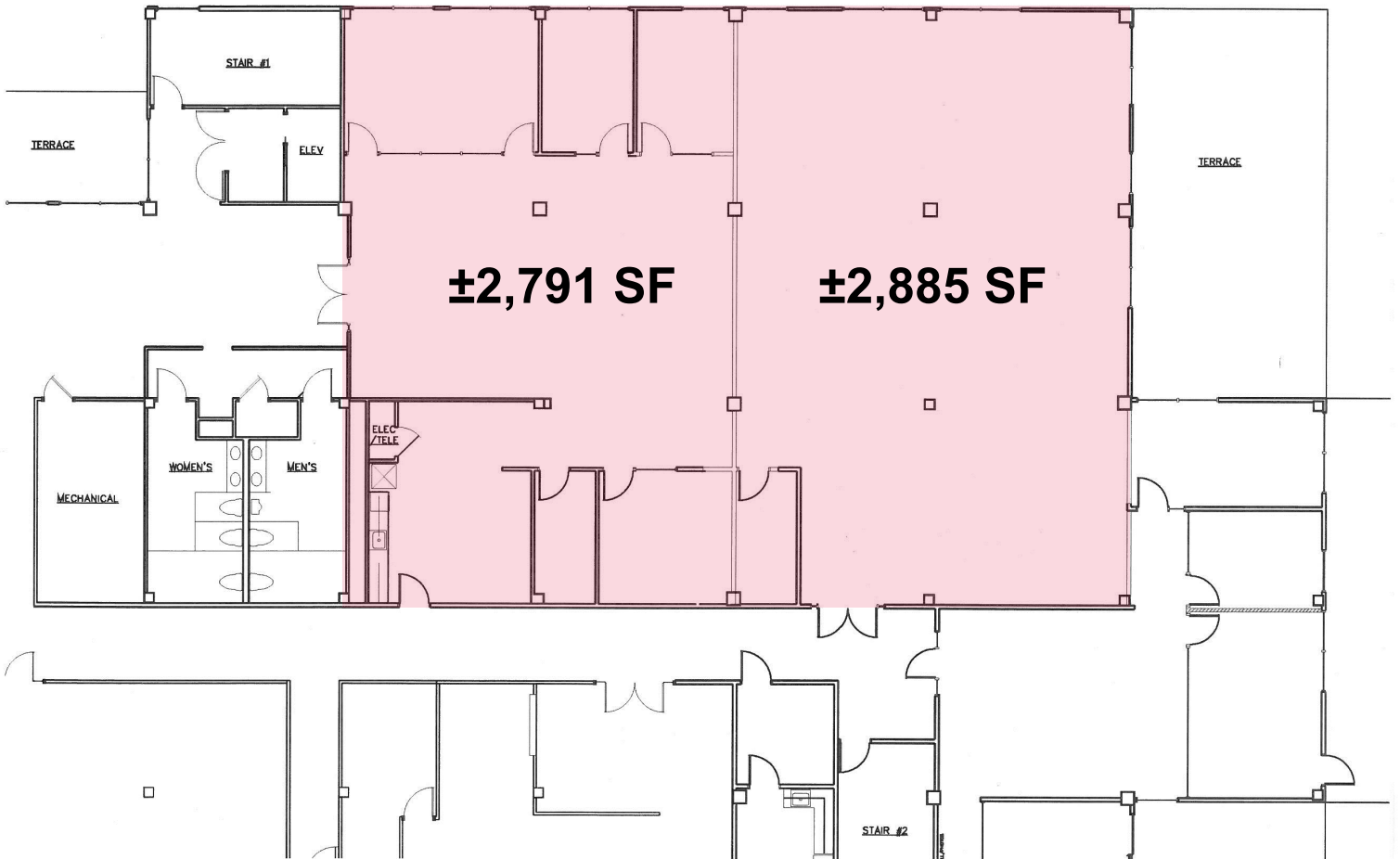
Cushman & Wakefield Copyright 2016. No warranty or representation, express or implied, is made to the accuracy or completeness of the information contained herein, and same is submitted subject to errors, omissions, change of price, rental or other conditions, withdrawal without notice, and to any special listing conditions imposed by the property owner(s). As applicable, we make no representation as to the condition of the property (or properties) in question.



**CUSHMAN &
WAKEFIELD**

SUBLEASE SPACE AVAILABLE
3675 Mt. Diablo Blvd.
DESCO PLAZA III, Lafayette, CA

Site Plan:



For more information, please contact:

Dan Moylan
Director
 +1 925 627 2887
 dan.moylan@cushwake.com
 LIC #00845782

Tim Hogan
Vice President
 +1 925 627 2884
 tim.hogan@cushwake.com
 LIC #01375367

1333 N. California Blvd., Suite 500
 Walnut Creek, CA 94596

T: +1 925 935 0770
 F: +1 925 935 3409

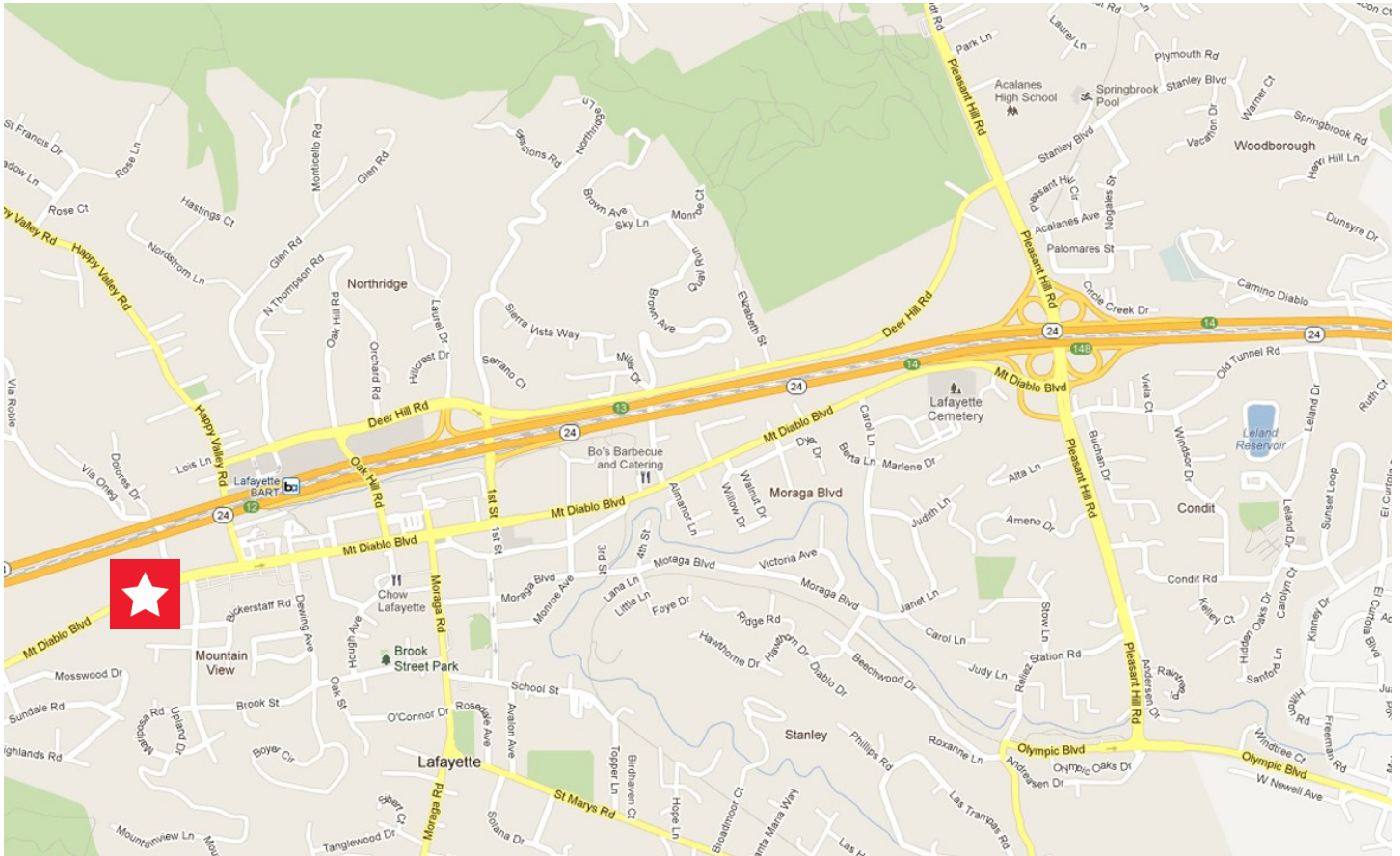
cushmanwakefield.com

Cushman & Wakefield Copyright 2016. No warranty or representation, express or implied, is made to the accuracy or completeness of the information contained herein, and same is submitted subject to errors, omissions, change of price, rental or other conditions, withdrawal without notice, and to any special listing conditions imposed by the property owner(s). As applicable, we make no representation as to the condition of the property (or properties) in question.



**CUSHMAN &
WAKEFIELD**

SUBLEASE SPACE AVAILABLE
3675 Mt. Diablo Blvd.
DESCO PLAZA III, Lafayette, CA



For more information, please contact:

Dan Moylan
Director
+1 925 627 2887
dan.moylan@cushwake.com
LIC #00845782

Tim Hogan
Vice President
+1 925 627 2884
tim.hogan@cushwake.com
LIC #01375367

1333 N. California Blvd., Suite 500
Walnut Creek, CA 94596

T: +1 925 935 0770
F: +1 925 935 3409

cushmanwakefield.com

Cushman & Wakefield Copyright 2016. No warranty or representation, express or implied, is made to the accuracy or completeness of the information contained herein, and same is submitted subject to errors, omissions, change of price, rental or other conditions, withdrawal without notice, and to any special listing conditions imposed by the property owner(s). As applicable, we make no representation as to the condition of the property (or properties) in question.



**CUSHMAN &
WAKEFIELD**

SUBLEASE SPACE AVAILABLE
3675 Mt. Diablo Blvd.
DESCO PLAZA III, Lafayette, CA



For more information, please contact:

Dan Moylan
Director
+1 925 627 2887
dan.moylan@cushwake.com
LIC #00845782

Tim Hogan
Vice President
+1 925 627 2884
tim.hogan@cushwake.com
LIC #01375367

1333 N. California Blvd., Suite 500
Walnut Creek, CA 94596

T: +1 925 935 0770
F: +1 925 935 3409

cushmanwakefield.com

Cushman & Wakefield Copyright 2016. No warranty or representation, express or implied, is made to the accuracy or completeness of the information contained herein, and same is submitted subject to errors, omissions, change of price, rental or other conditions, withdrawal without notice, and to any special listing conditions imposed by the property owner(s). As applicable, we make no representation as to the condition of the property (or properties) in question.