

FOR LEASE

**10,800 SF AVAILABLE**



PARK JEFFERSON - BUILDING 3A

**5650 SHEPHERDSVILLE RD • LOUISVILLE, KY 40228**

5650 SHEPHERDSVILLE RD | LOUISVILLE, KY 40228

# PROPERTY HIGHLIGHTS

Functional Industrial Layout

Excellent Loading Capabilities

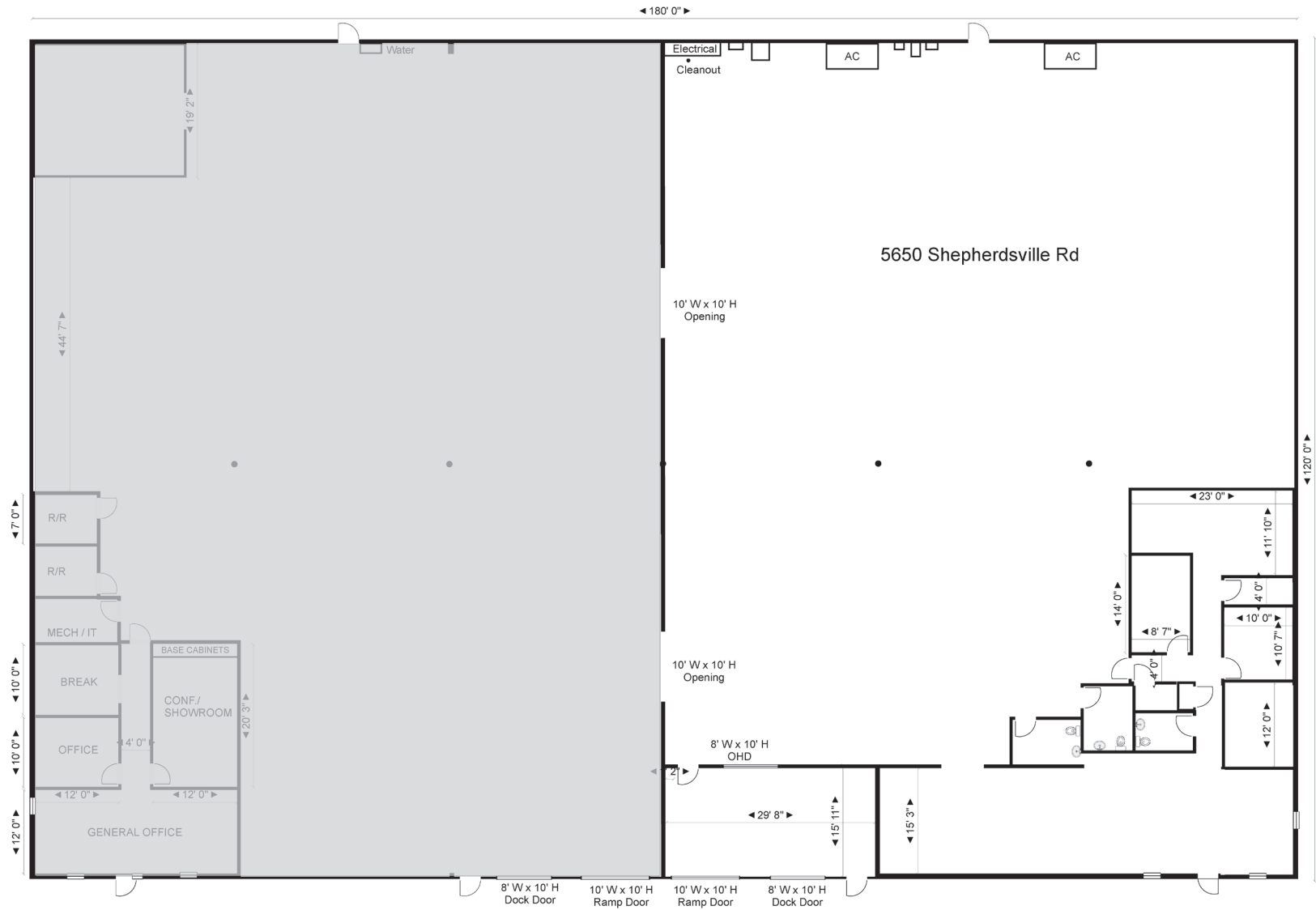
Strong Power and Infrastructure

Efficient Building Systems

## PROPERTY FEATURES

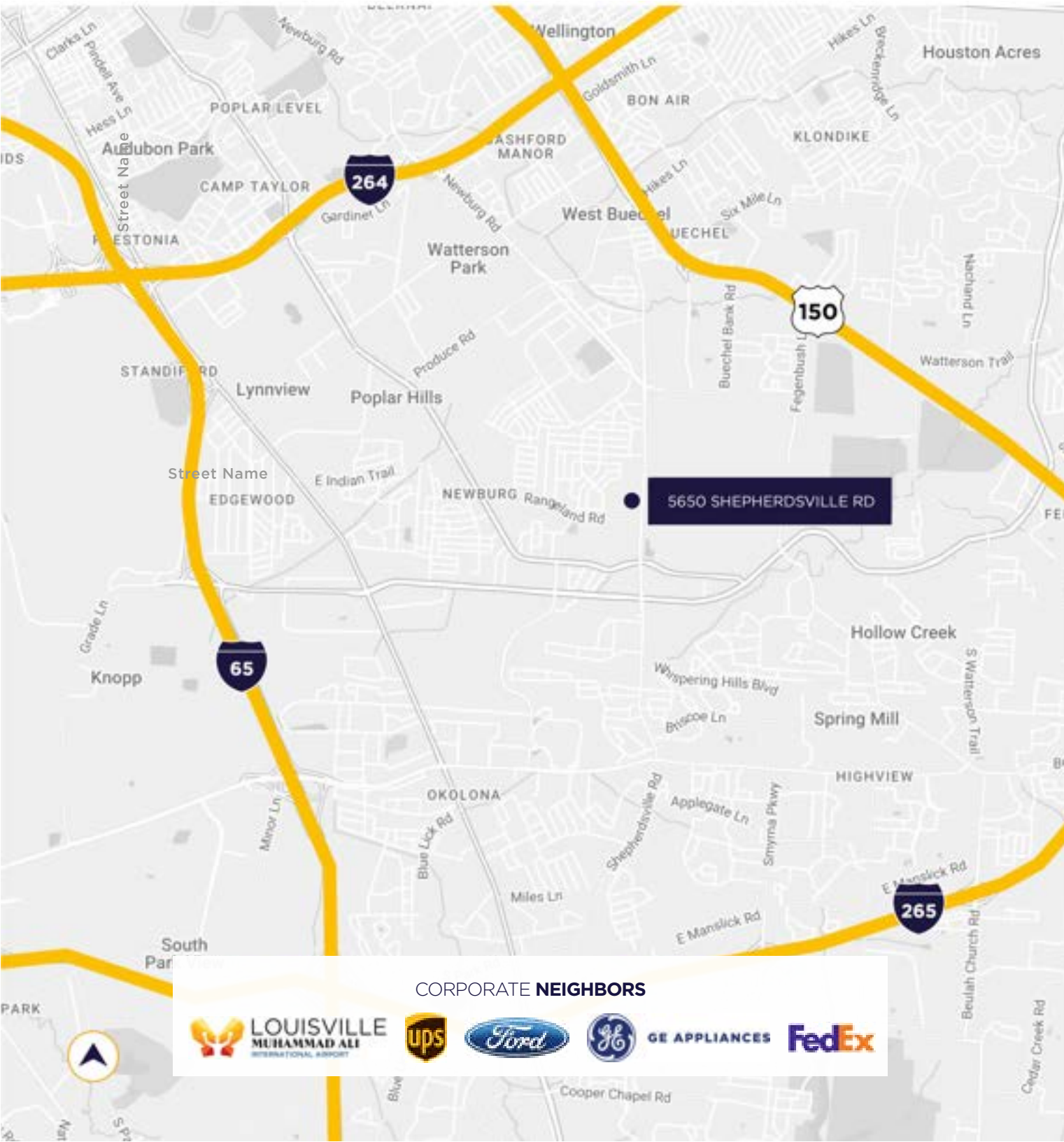
Available SF	10,800 sf
Warehouse	9,000 sf
Office	1,800 sf
Lighting	LED
Loading Docks	One (1)
Drive-in Doors	One (1)
Power	277/480V, 3-Phase
Fire Protection	Wet Sprinkler on Alarm
Zoning	M-2
HVAC	Air-Conditioned Space





# FLOOR PLAN

## 10,800 SF



**0.2 MILES**

TO GE APPLIANCE PARK

**2.8 MILES**

TO FEDEX FREIGHT

**4.2 MILES**

TO I-65

**4.6 MILES**

TO I-264

**4.9 MILES**

TO FORD ASSEMBLY PLANT

**6.5 MILES**

TO UPS WORLDPORT/  
AIRPORT

CORPORATE **NEIGHBORS**



GE APPLIANCES



# CONTACT INFORMATION

## **GREG CHARMOLI**

*gcharmoli@commercialkentucky.com*

*+1 502 719 3238*



©2026 Cushman & Wakefield. All rights reserved. The information contained in this communication is strictly confidential. This information has been obtained from sources believed to be reliable but has not been verified. NO WARRANTY OR REPRESENTATION, EXPRESS OR IMPLIED, IS MADE AS TO THE CONDITION OF THE PROPERTY (OR PROPERTIES) REFERENCED HEREIN OR AS TO THE ACCURACY OR COMPLETENESS OF THE INFORMATION CONTAINED HEREIN, AND SAME IS SUBMITTED SUBJECT TO ERRORS, OMISSIONS, CHANGE OF PRICE, RENTAL OR OTHER CONDITIONS, WITHDRAWAL WITHOUT NOTICE, AND TO ANY SPECIAL LISTING CONDITIONS IMPOSED BY THE PROPERTY OWNER(S). ANY PROJECTIONS, OPINIONS OR ESTIMATES ARE SUBJECT TO UNCERTAINTY AND DO NOT SIGNIFY CURRENT OR FUTURE PROPERTY PERFORMANCE.

Independently Owned & Operated / A Member of the Cushman & Wakefield Alliance