



# 8101 - 8105 W Washington St

Indianapolis, IN 46231

±4.5 ACRES

## PROPERTY HIGHLIGHTS

- ±4.5 Acres
- Zoned I-3
- Within two miles of Interstate 465 with easy access to I-65, I-70, I-69, and I-74
- Located very close to the Indianapolis International Airport
- \$250,000 per acre

**MATT KITE**  
Director  
+1 317 616 3981  
matt.kite@cushwake.com

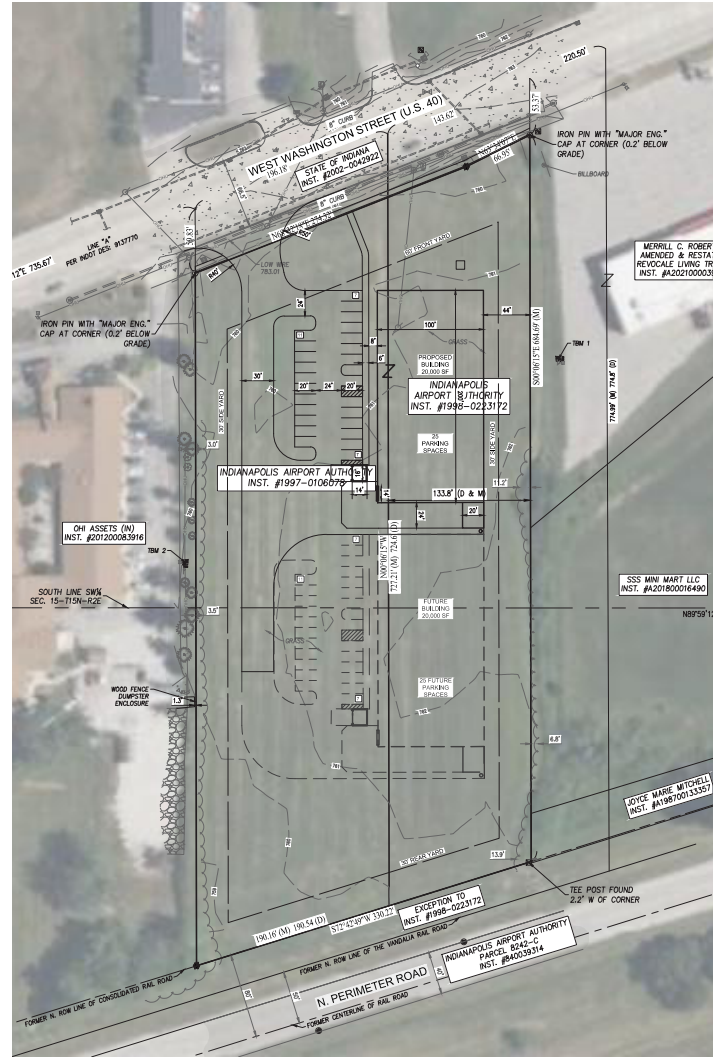
One American Square  
Suite 1800  
Indianapolis, IN 46282  
Main +1 317 639 0515  
[cushmanwakefield.com](http://cushmanwakefield.com)

# 8101 - 8105 W Washington St

Indianapolis, IN 46231

**±4.5 ACRES**

## AERIAL/SITE PLAN



### Demographics

	1 Mile	3 Miles	5 Miles
Population	2,404	36,960	148,822
Average HH Income	\$84,655	\$88,117	\$91,568
Daytime Population	3,229	42,456	109,121

### Traffic Counts

Washington Street 29,998

### MATT KITE

Director  
+1 317 616 3981  
matt.kite@cushwake.com

One American Square  
Suite 1800  
Indianapolis, IN 46282  
Main +1 317 639 0515  
[cushmanwakefield.com](http://cushmanwakefield.com)