

FOR LEASE



PLYMOUTH INDUSTRIAL PARK D

13200 N 10TH AVENUE, PLYMOUTH, MN

UP TO 46,357 SF AVAILABLE - DIVISIBLE TO 16,446 SF

JASON MEYER

Executive Director

+1 952 820 8735

jason.j.meyer@cushwake.com

BRENT MASICA

Executive Managing Director

+1 952 893 8231

brent.masica@cushwake.com

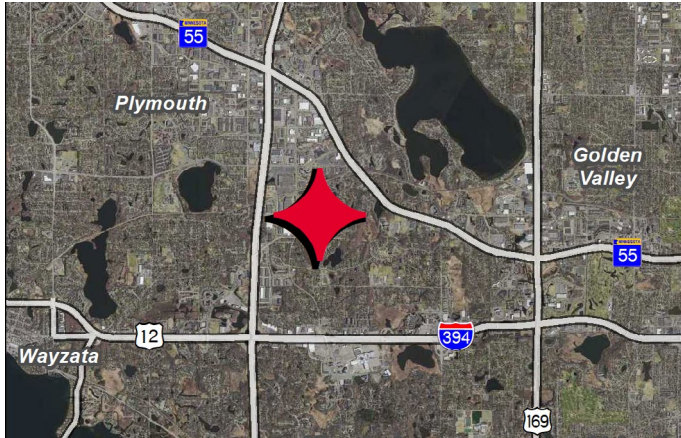


**CUSHMAN &
WAKEFIELD**

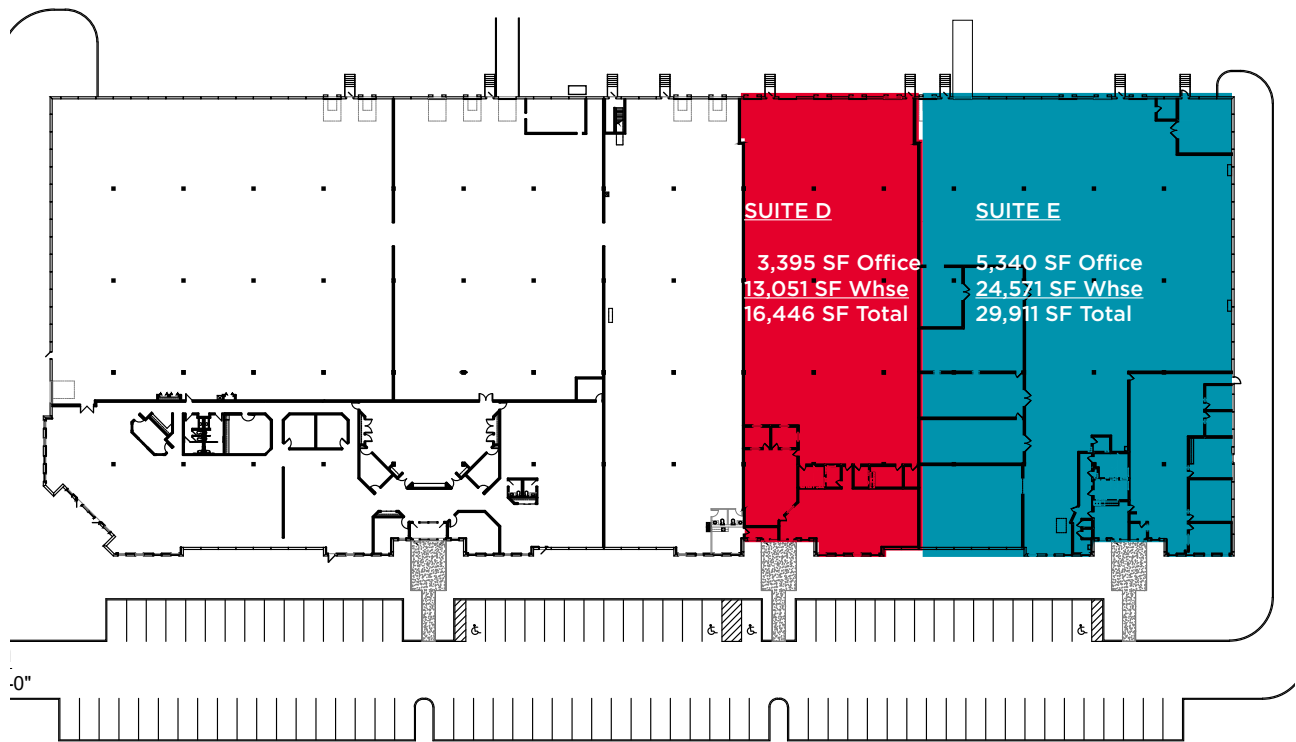


**JAMES CAMPBELL
COMPANY**

Lease Features



AVAILABLE SIZE	Suite D	3,395 SF Office 13,051 SF Whse 16,446 SF Total
	Suite E	5,340 SF Office 24,571 SF Whse 29,911 SF Total
LOADING	Suite D	4 Docks 1 Drive-In
	Suite E	4 Docks 1 Drive-In
LOT	7.81 Acres	
YEAR BUILT	1989	
CLEAR HEIGHT	24'	
2026 TAX & CAM	\$4.85 PSF (estimated)	
LEASE RATES	Negotiable	



13200 N 10TH AVENUE, PLYMOUTH, MN

Suite D Floor Plan

SIZE

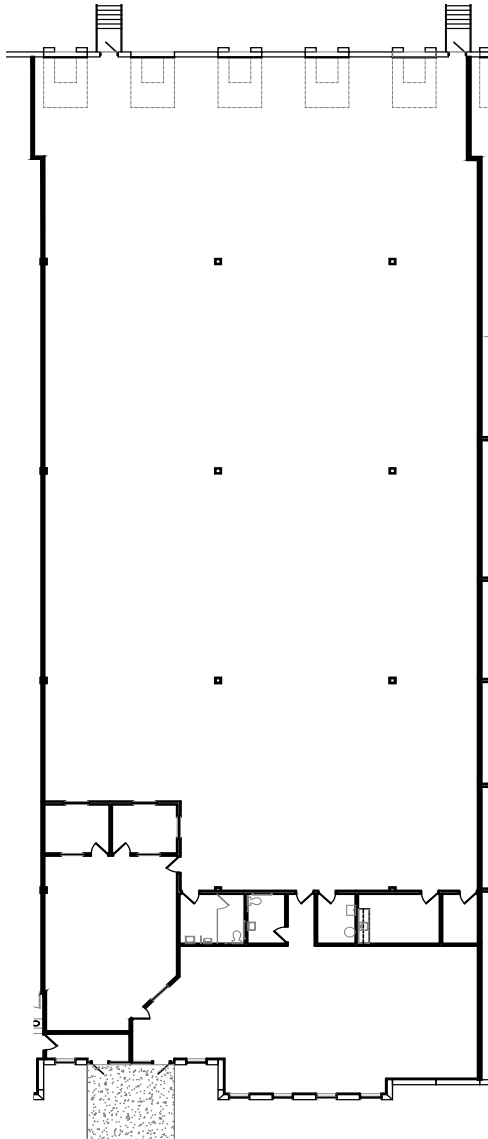
3,395 SF Office
13,051 SF Whse
16,446 SF Total

LOADING

4 Docks
1 Ramped Drive-In

Available

3.1.2027



13200 N 10TH AVENUE, PLYMOUTH, MN

Suite E Floor Plan

SIZE

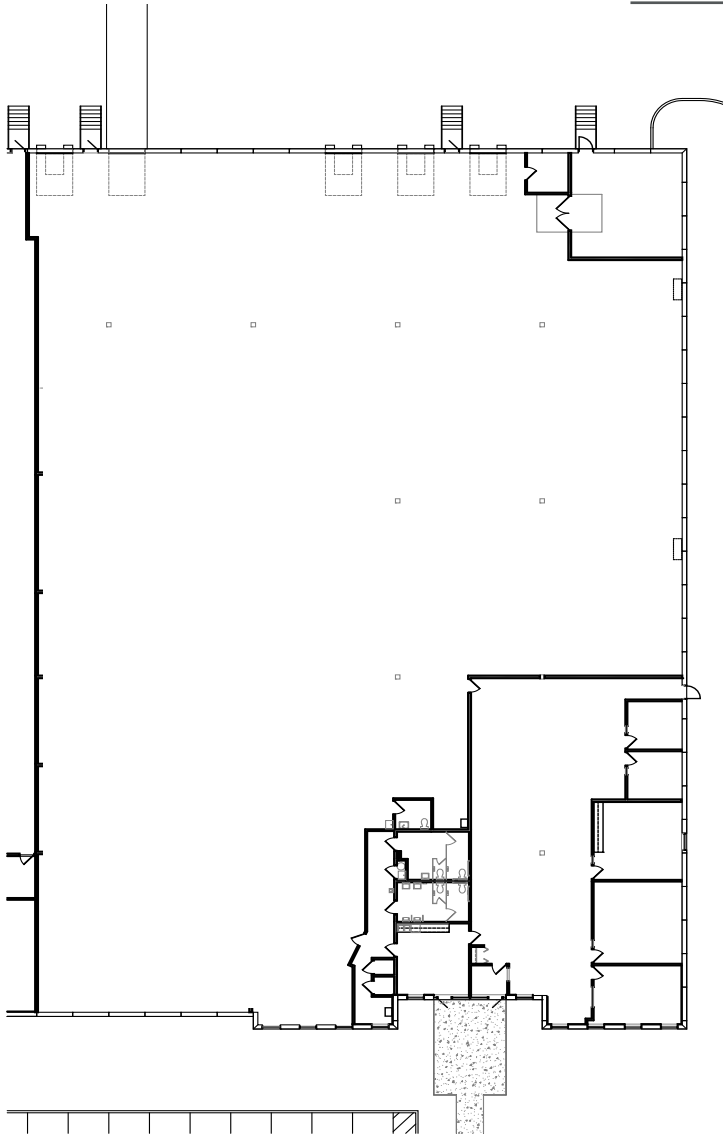
5,340 SF Office
24,571 SF Whse
29,911 SF Total

LOADING

4 Docks
1 Ramped Drive-In

Available

1.1.2027



13200 N 10TH AVENUE, PLYMOUTH, MN

Aerial Map



JASON MEYER
Executive Director

+1 952 820 8735
jason.j.meyer@cushwake.com

BRENT MASICA
Executive Managing Director

+1 952 893 8231
brent.masica@cushwake.com

3500 American Blvd W, Suite 200
Minneapolis, MN
+1 952 831 1000
cushmanwakefield.com

©2016 Cushman & Wakefield. All rights reserved. The information contained in this communication is strictly confidential. This information has been obtained from sources believed to be reliable but has not been verified. NO WARRANTY OR REPRESENTATION, EXPRESS OR IMPLIED, IS MADE AS TO THE CONDITION OF THE PROPERTY (OR PROPERTIES) REFERENCED HEREIN OR AS TO THE ACCURACY OR COMPLETENESS OF THE INFORMATION CONTAINED HEREIN, AND SAME IS SUBMITTED SUBJECT TO ERRORS, OMISSIONS, CHANGE OF PRICE, RENTAL OR OTHER CONDITIONS, WITHDRAWAL WITHOUT NOTICE, AND TO ANY SPECIAL LISTING CONDITIONS IMPOSED BY THE PROPERTY OWNER(S). ANY PROJECTIONS, OPINIONS OR ESTIMATES ARE SUBJECT TO UNCERTAINTY AND DO NOT SIGNIFY CURRENT OR FUTURE PROPERTY PERFORMANCE.



The James Campbell Company (JCC) is a private real estate firm headquartered in Hawai'i with a legacy spanning over 160 years. Founded on Maui and Oahu with an original focus on sugar plantations, JCC has grown into a nationally diversified company with over 22 million square feet of properties and 2,300+ acres of land. Our portfolio spans 11 states and Washington D.C. and 13 markets. We own, manage, and develop institutional caliber industrial, office, and retail assets, as well as ground leases. In Hawai'i, the company is known for its pivotal role in the development of Kapolei as Oahu's "Second City" and continues to drive economic and community growth on West Oahu. The James Campbell Company focuses on stewarding its properties with integrity, nurturing long-term growth and fostering prosperity for the people and communities it serves in Hawai'i and beyond.