

**FOR SALE**  
**±35 acres**  
7735 & 7975 S 450 E | Whitestown, IN



## PROPERTY HIGHLIGHTS

- ±35 acres (additional ±59.67 acres available)
- Zoned agriculture
- Potential future zoning: Light industrial/I-3 (per Whitestown comprehensive plan)
- City: Whitestown
- County: Boone
- Utilities: Call broker for details
- Asking \$100,000/acre



## Contact

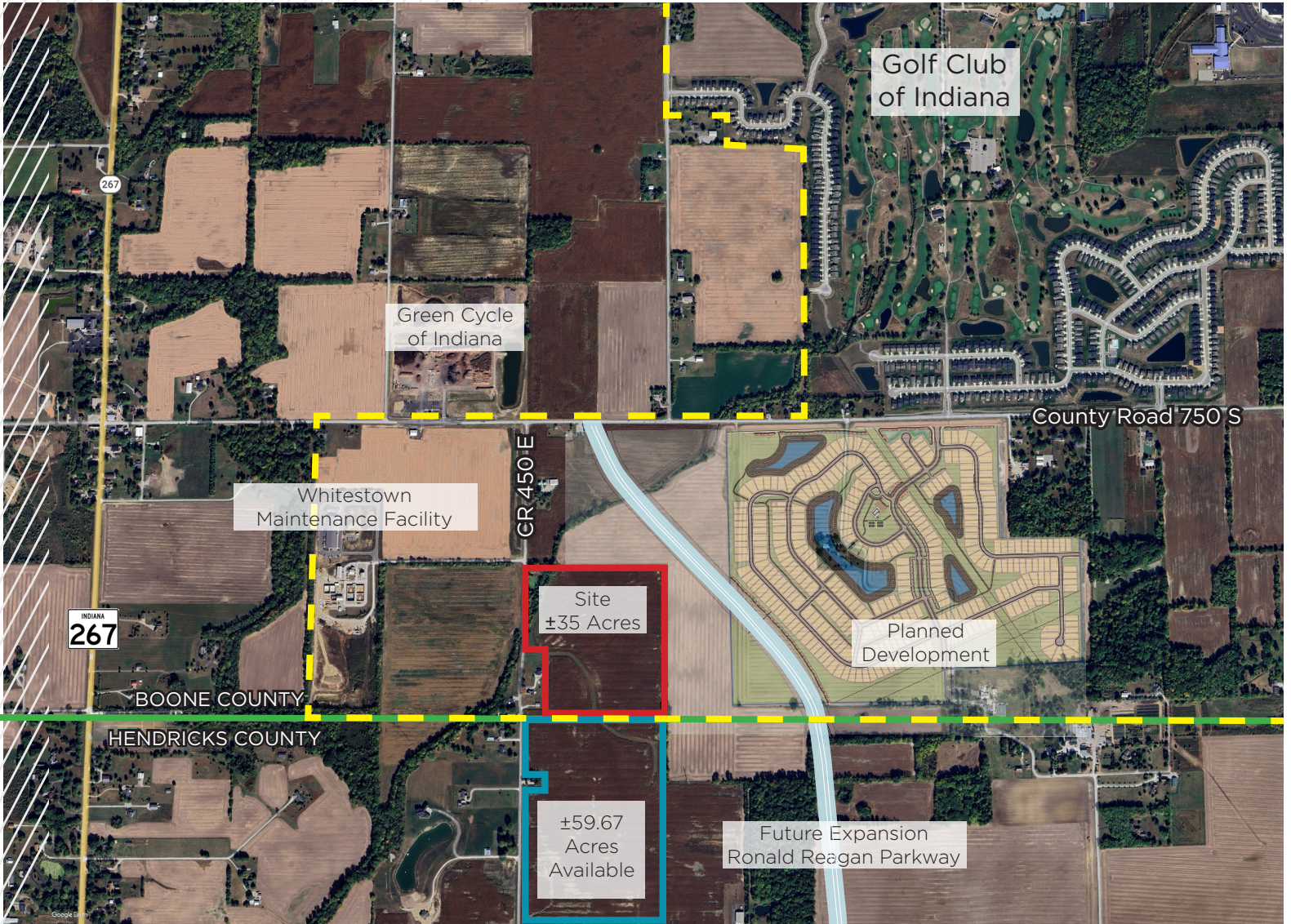
**BO LEFFEL**  
Vice Chair  
+1 317 639 0441  
bo.leffel@cushwake.com

**MATT KITE**  
Director  
+1 317 616 3981  
matt.kite@cushwake.com

**BOB DEMAREE**  
Associate  
+1 317 352 5847  
bob.demaree@cushwake.com

One American Square  
Suite 1800  
Indianapolis, IN 46282  
+1 317 639 0515

**FOR SALE**  
**±35 acres**  
 7735 & 7975 S 450 E | Whitestown, IN



- - - Whitestown Boundary
- Hendricks Co / Boone County

## Contact

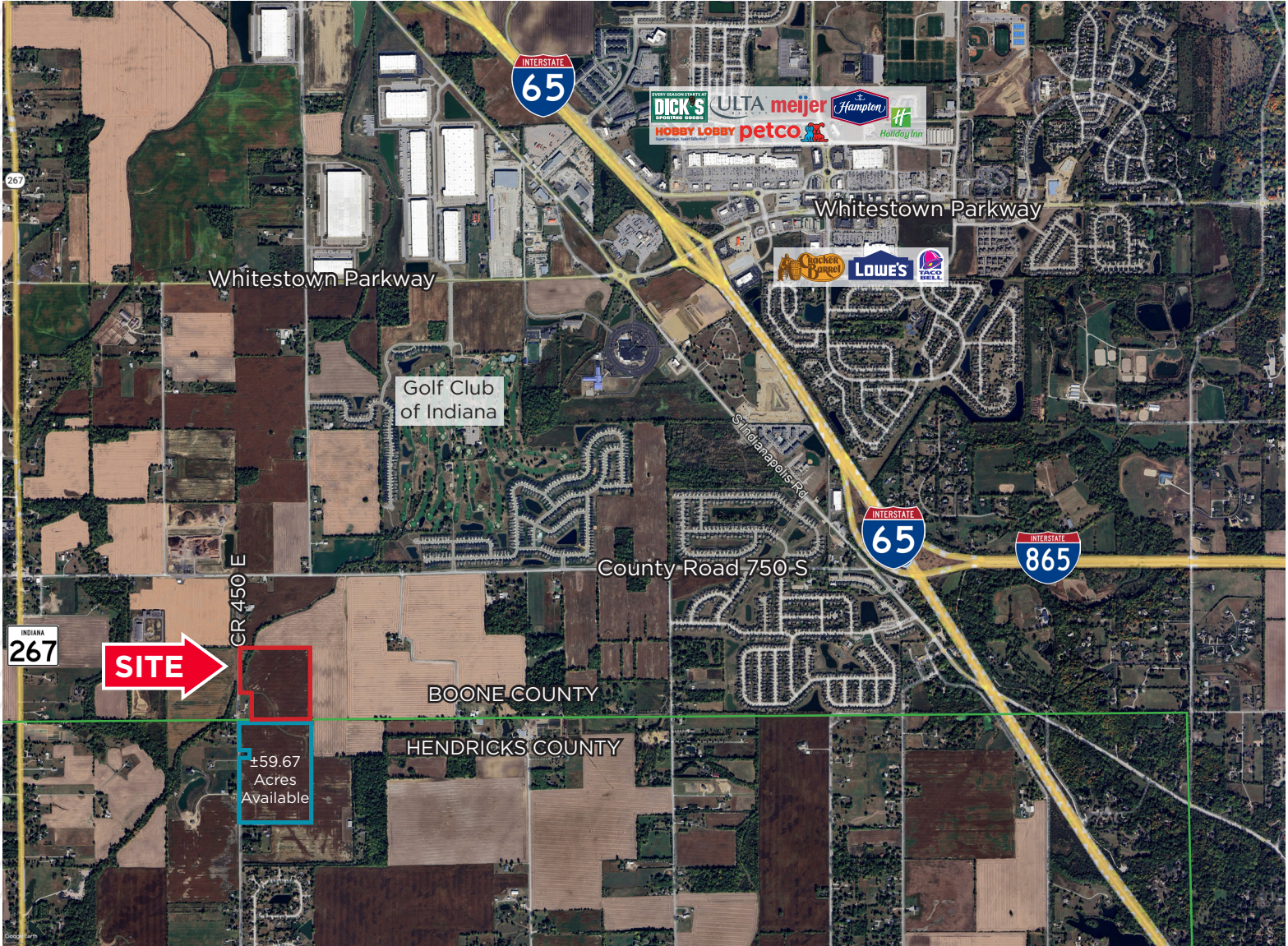
**BO LEFFEL**  
 Vice Chair  
 +1 317 639 0441  
 bo.leffel@cushwake.com

**MATT KITE**  
 Director  
 +1 317 616 3981  
 matt.kite@cushwake.com

**BOB DEMAREE**  
 Associate  
 +1 317 352 5847  
 bob.demaree@cushwake.com

One American Square  
 Suite 1800  
 Indianapolis, IN 46282  
 +1 317 639 0515

**FOR SALE**  
**±35 acres**  
 7735 & 7975 S 450 E | Whitestown, IN



**Demographics**

|                    | 3 Mile    | 5 Mile    | 10 Mile   |
|--------------------|-----------|-----------|-----------|
| Population         | 13,755    | 42,241    | 261,467   |
| AVG. HH Income     | \$194,643 | \$190,450 | \$136,631 |
| Daytime Population | 5,223     | 17,551    | 185,933   |

**Contact**

**BO LEFFEL**  
 Vice Chair  
 +1 317 639 0441  
 bo.leffel@cushwake.com

**MATT KITE**  
 Director  
 +1 317 616 3981  
 matt.kite@cushwake.com

**BOB DEMAREE**  
 Associate  
 +1 317 352 5847  
 bob.demaree@cushwake.com

One American Square  
 Suite 1800  
 Indianapolis, IN 46282  
 +1 317 639 0515

©2026 Cushman & Wakefield. All rights reserved. The information contained in this communication is strictly confidential. This information has been obtained from sources believed to be reliable but has not been verified. No warranty or representation, express or implied, is made as to the condition of the property (or properties) referenced herein or as to the accuracy or completeness of the information contained herein, and same is submitted subject to errors, omissions, change of price, rental or other conditions, withdrawal without notice, and to any special listing conditions imposed by the property owner(s). Any projections, opinions or estimates are subject to uncertainty and do not signify current or future property performance.