

112,282+ SF FOR LEASE

2400 ENTERPRISE

JACKSON, MICHIGAN

AVAILABLE
Q2 2026



*Mid-Michigan
Manufacturing Space*



**CUSHMAN &
WAKEFIELD**



**Climate Controlled
Manufacturing Space**

PREMIUM DISTRIBUTION HUB

Rare offering of modern, climate controlled manufacturing or distribution space in the heart of Jackson just off US-127 and south of I-94. This space offers hard to find clear height, power, infrastructure and modern amenities not often available in the Jackson-area. Close distance to downtown Jackson and numerous other large industrial users. Additionally, it is located within 43 miles of Ford's Blue Oval Battery Park.

PROPERTY INFORMATION

Total RBA: 112,282+ SF
Industrial Area: 101,700 SF
Office Area: 10,300 SF

Site Area: 19.65 Acres

Buildings: 1

Year Built: 1968; Renovated in 2009

Clear Height: 24'

Loading Docks: 6 total: 2 (8'x12'), 1 (8'x8')
3 doors have interior loading

Drive-in Doors: 6 total. Access to grade door through adjacent spaces is granted through lease.

Bay Size/Column Spacing: 37' x 28'

Construction: Steel frame with pre-cast sidewalls

Roof: Membrane - completed in phases between 2009-2019

Lighting: Fluorescent

Power: 4,860a / 480v 3 phase
Buss ducts throughout
Interior switchgear is rated 10,000 AMPs. Disconnects total 8,400 AMPs.

Electric: Consumers Energy
Natural Gas: Consumers Energy
Water/Sewer: City of Jackson

HVAC: 100% Conditioned
Air Conditioning: Two air rotation/chiller units

Cranes: No

Air Lines: Yes
Compressor: No

Fire Protection: Yes - ordinary Hazard

Security: Yes

Locker Room: Yes, M and W with shower
Breakroom: Yes, large cafeteria area
Restrooms: In office and in plant

Auto Parking: 70 spaces

Outside Storage: Per code

Site Fencing: No

Floor Drains: No

Zoning: I-2 General Industrial

Parcel ID: 6-1843.5000

2024 Taxes: \$0.47 PSF
Insurance: \$0.06 PSF
CAM: \$0.16 PSF
Total: **\$0.69 PSF**

Lease Rate: \$5.75 PSF NNN

Miscellaneous: Exhaust fans throughout production area.
Skylights throughout plant floor.
In desirable Micor Industrial Park.
Just off US-127 with easy access to I-94.

PHOTOS



Plant



Plant



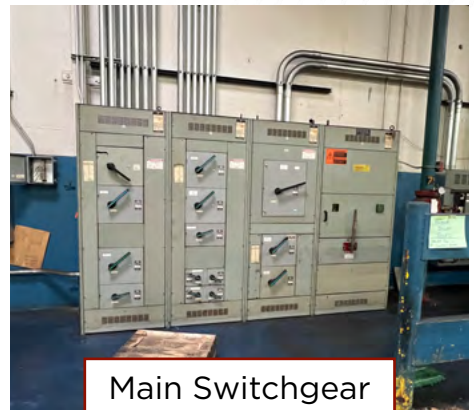
Plant



Compressor Area



Plant



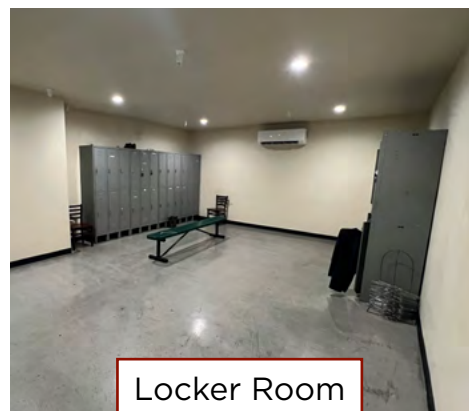
Main Switchgear



Quality Lab



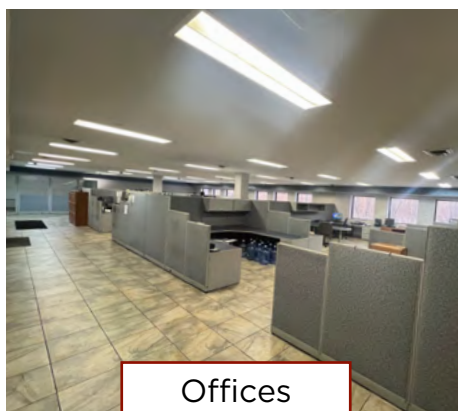
Exterior



Locker Room



Potential Office Expansion
(second floor)

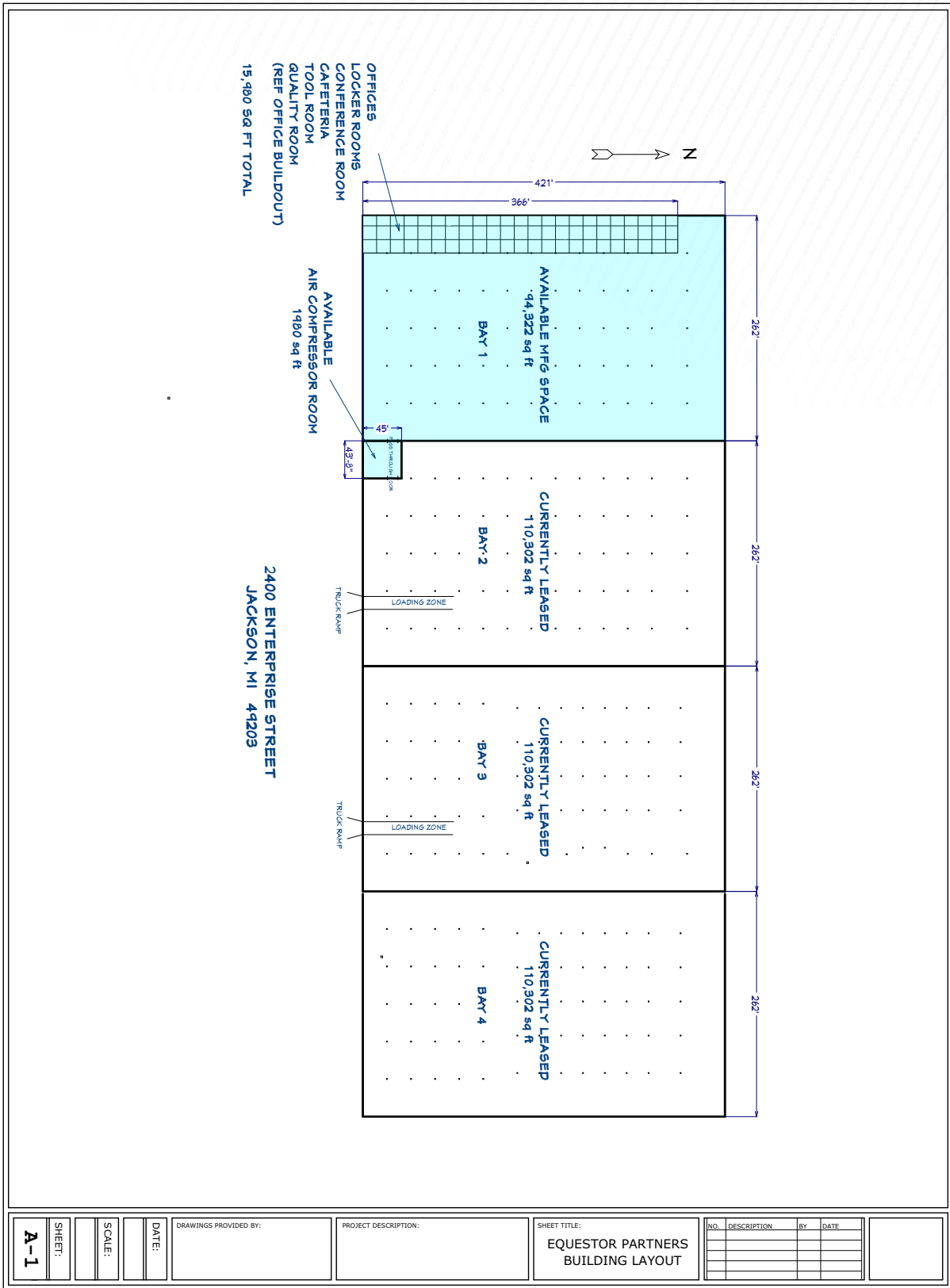


Offices



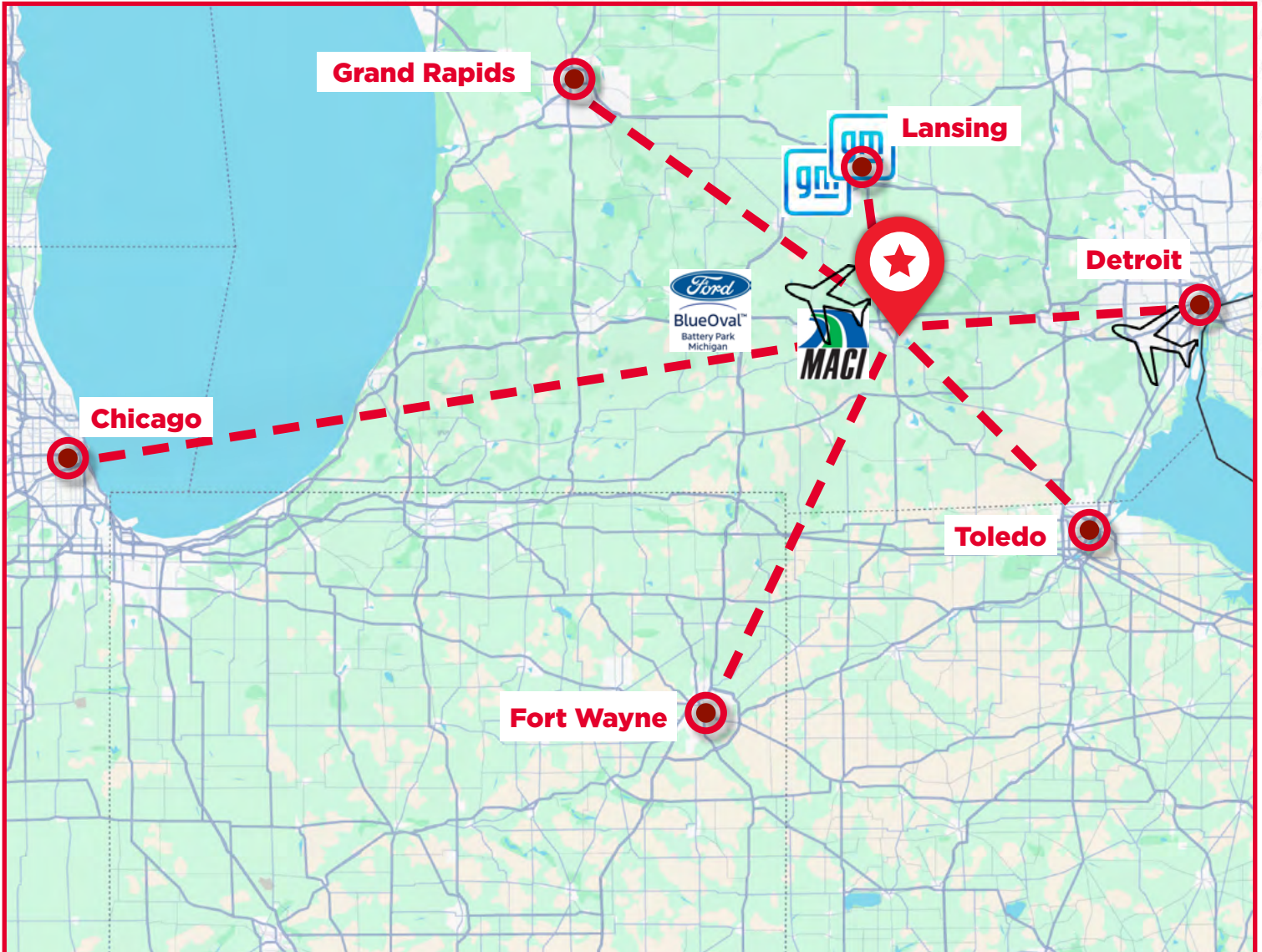
Cafeteria/Assembly Area

FLOOR PLANS



DRAWINGS PROVIDED BY:	PROJECT DESCRIPTION:	SHEET TITLE: EQUESTOR PARTNERS BUILDING LAYOUT	NO.	DESCRIPTION	BY	DATE
DATE:						
SCALE:						
SHEET:						
A-1						

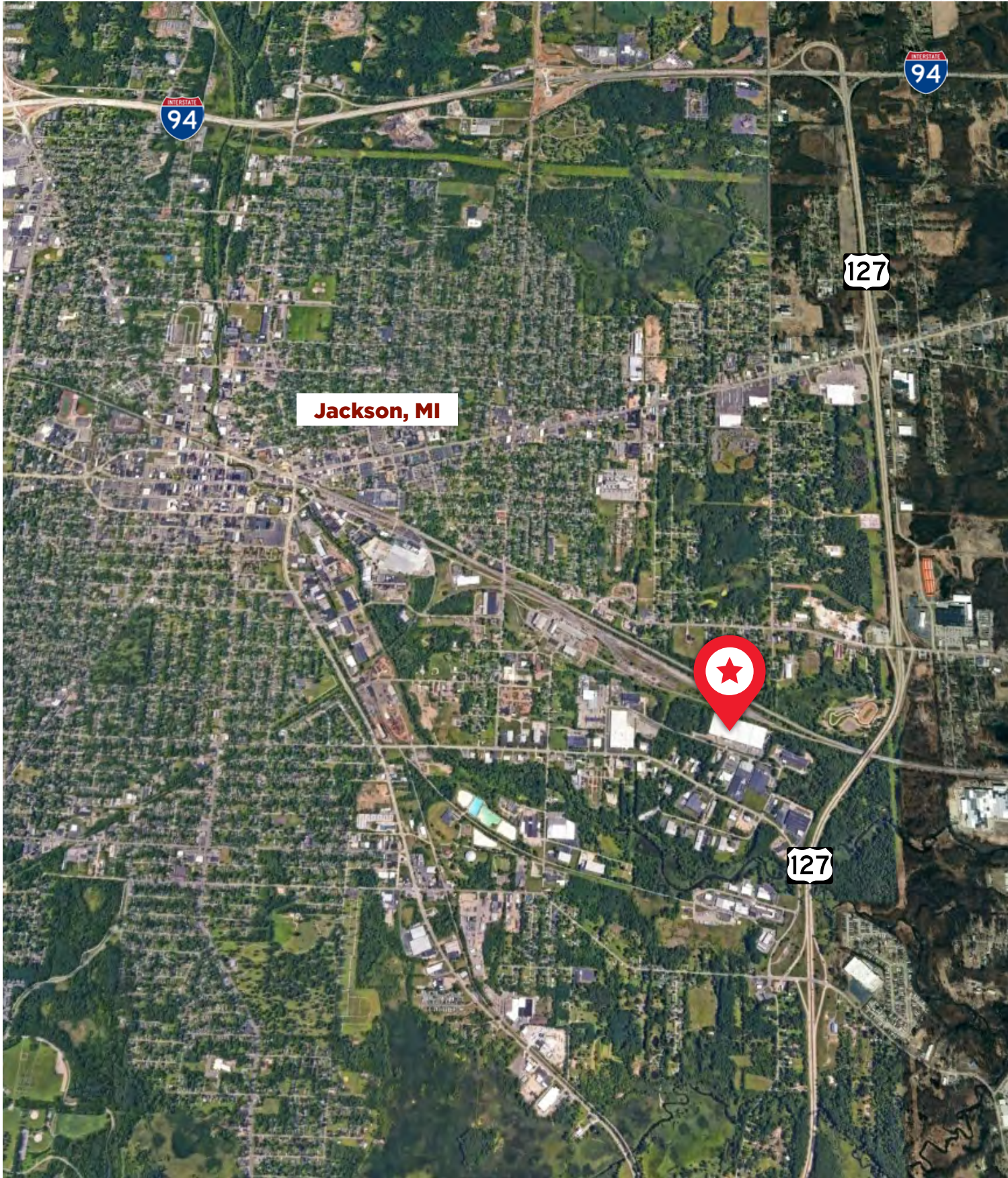
JACKSON, MI



From Jackson to:	Distance:
Ann Arbor	36.6 Miles
Detroit	78.7 Miles
Lansing	39.4 Miles
Kalamazoo	66.1 Miles
Grand Rapids	106 Miles
Chicago	209 Miles
Fort Wayne	108 Miles
Toledo	72.9 Miles

From Jackson to:	Distance:
Ford BlueOval Battery Park	43.7 Miles
GM Lansing Delta Assembly	45.8 Miles
GM LGR Paint Shop (Lansing Grand River)	45.1 Miles
Michigan Automotive Compressor (MACI)	12.6 Miles
Jackson County Airport (JXN)	6.1 Miles
Detroit Metropolitan Wane County Airport (DWT)	61 Miles

JACKSON, MI



JACKSON COUNTY

LOCAL COLLEGES

Jackson Area Career Center	6.8 Miles
Jackson College	7 Miles
Baker College	8 Miles
Spring Arbor University	10.5 Miles
Albion College	23.7 Miles
Hillsdale College	30.9 Miles
Adrian College	33.9 Miles
Univeristy of Michigan	37.9 Miles
Michigan State University	38.9 Miles
Olivet College	45.1 Miles
Kellogg Community College	47.3 Miles
Kalamazoo College	69.2 Miles
Western Michigan University	72.5 Miles

Jackson County is located in southern/mid Michigan. It is made up of 19 townships and 7 villages across 723 square miles. Its population is approximately 160,233.



The city of Jackson is lies in the center of Jackson County. Comprised of 10.96 square miles with a population of approximately 30,920, it is 61.6 miles from Detroit Metropolitan Airport.

Economic Development & Incentives Contacts

Accelerate Jackson County

Keith A. Gillenwater, President & CEO
517.788.4456
keith@acceleratejacksoncounty.org

Michigan Economic Development Corporation (MEDC)

Jim Coutu, Business Development Manager
517.420.1647
coutuj@michigan.org

DEMOGRAPHICS

160,233

POPULATION

\$65,004

MEDIAN HOUSEHOLD
INCOME

69,430

LABOR FORCE

41.2

MEDIAN AGE

195,000

MEDIAN HOME VALUE

5.9%

UNEMPLOYMENT RATE

FOR MORE INFORMATION, PLEASE CONTACT:

Craig Herschel, SIOR
Director
+1 419 944 5185
craig.herschel@cushwake.com

Phil Morgan
+1 517 204 4385
9903200@gmail.com



©2023 Cushman & Wakefield. All rights reserved. The information contained in this communication is strictly confidential. This information has been obtained from sources believed to be reliable but has not been verified. NO WARRANTY OR REPRESENTATION, EXPRESS OR IMPLIED, IS MADE AS TO THE CONDITION OF THE PROPERTY (OR PROPERTIES) REFERENCED HEREIN OR AS TO THE ACCURACY OR COMPLETENESS OF THE INFORMATION CONTAINED HEREIN, AND SAME IS SUBMITTED SUBJECT TO ERRORS, OMISSIONS, CHANGE OF PRICE, RENTAL OR OTHER CONDITIONS, WITHDRAWAL WITHOUT NOTICE, AND TO ANY SPECIAL LISTING CONDITIONS IMPOSED BY THE PROPERTY OWNER(S). ANY PROJECTIONS, OPINIONS OR ESTIMATES ARE SUBJECT TO UNCERTAINTY AND DO NOT SIGNIFY CURRENT OR FUTURE PROPERTY PERFORMANCE.



**CUSHMAN &
WAKEFIELD**