



# NORTHPOINT



137,648 SF

NORTHPOINT BUSINESS PARK | BUILDING 3, LOT 7  
Westfield, Indiana

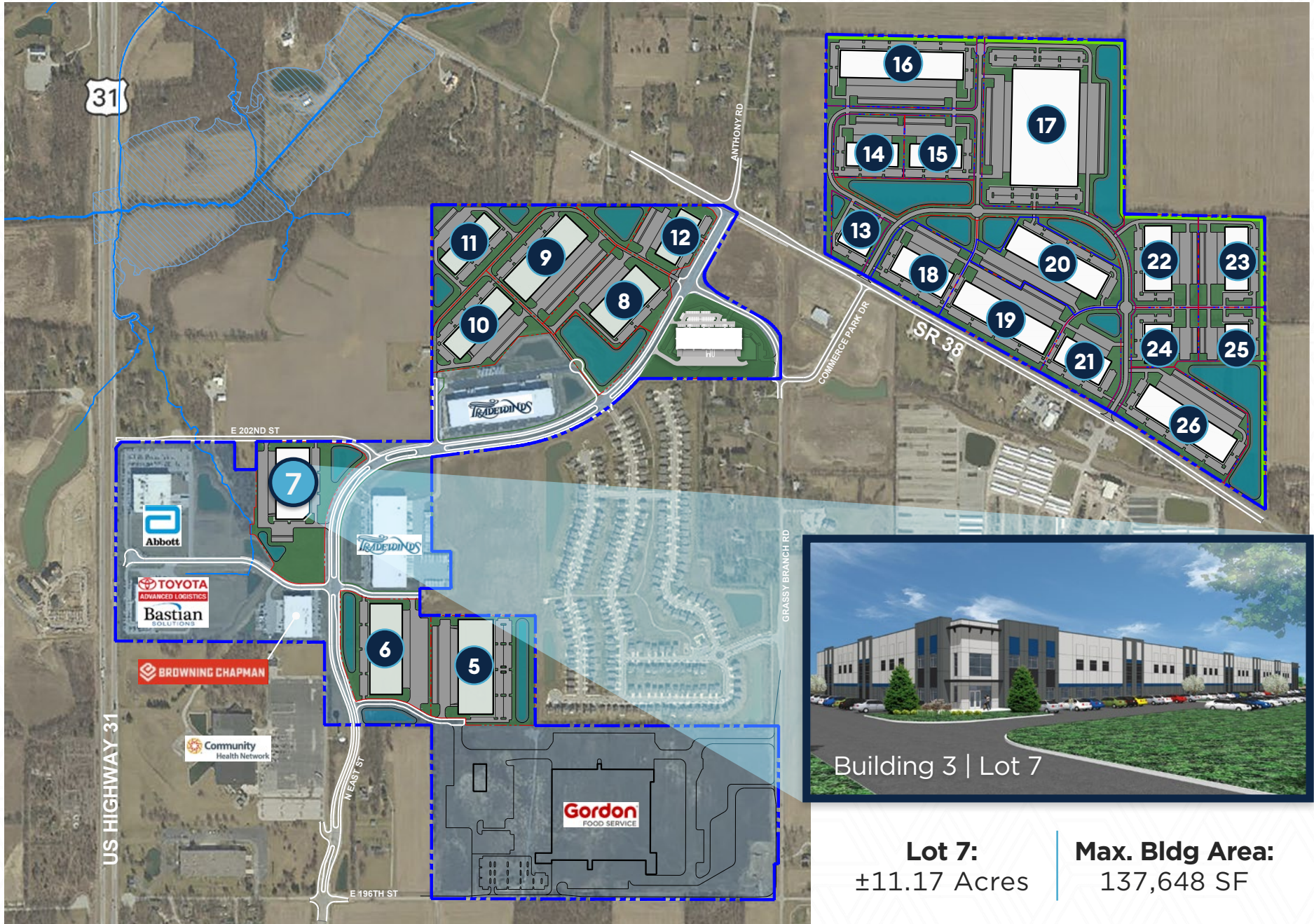


<http://www.npwestfield.com/>



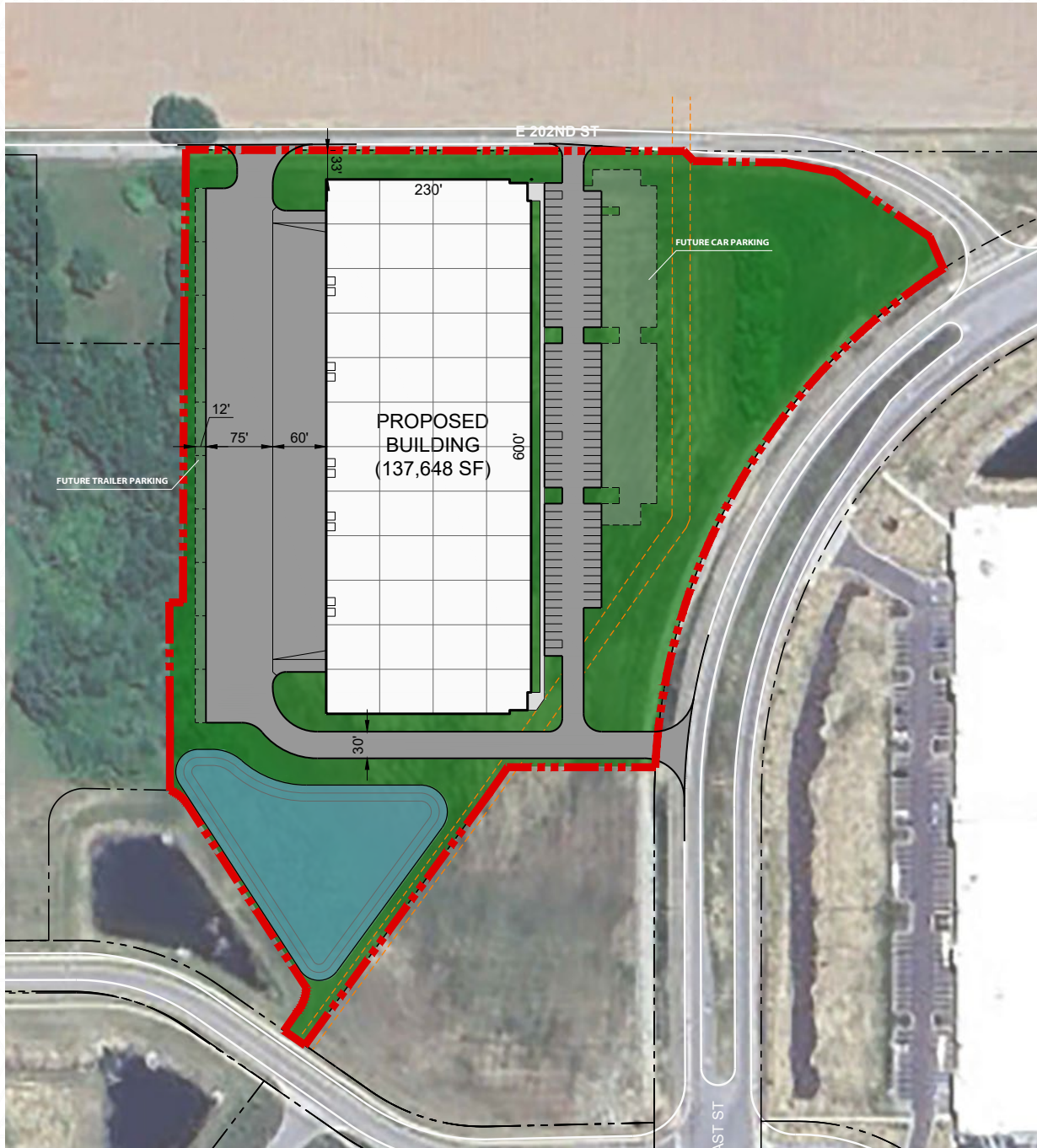
# SITE PLAN

SITE SIZE ADJUSTABLE TO CLIENT REQUIREMENT



# SITE PLAN

LOT 7



**Total SF:** 137,648

**Divisible:** 23,000 SF

**Acerage:** 11.17 Acres

**Building Dimensions:** 600' x 230'

**Clear Height:** 32'

**Dock Doors:** 10 (9' x 10')  
Expandable to 32

**Drive-in Doors:** 2 (12' x 14')

**Auto Parking:** 100

**Future Auto Parking:** 39

**Future Trailer Parking:** 10

**Truck Court:** 135' Deep w/60' Concrete

**Floors:** 4,000PSI 7' Unreinforced

**Sprinkler:** ESFR

**Lighting:** LED High-bay with Motion Sensors  
(30' FT Candles at 36" AFF)

**Dock Leveler:** 7'x8' 40,000 lb (Inclusive of Dock  
Seals, Dock Lights and Bumpers)

**Power:** 2,400 Amps (480-Volt 3-phase)

**Bay Spacing:**  
Front Bays 50' x 50'  
Remaining Bays 50' x 60'

**Estimated Availability:** July 2027

# SITE PLAN

LOT 7



**Total SF:** 137,648

**Divisible:** 23,000 SF

**Acerage:** 11.17 Acres

**Building Dimensions:** 600' x 230'

**Clear Height:** 32'

**Dock Doors:** 10 (9' x 10')  
Expandable to 32

**Drive-in Doors:** 2 (12' x 14')

**Auto Parking:** 100

**Future Auto Parking:** 39

**Future Trailer Parking:** 10

**Truck Court:** 135' Deep w/60' Concrete

**Floors:** 4,000PSI 7' Unreinforced

**Sprinkler:** ESFR

**Lighting:** LED High-bay with Motion Sensors  
(30' FT Candles at 36" AFF)

**Dock Leveler:** 7'x8' 40,000 lb (Inclusive of Dock  
Seals, Dock Lights and Bumpers)

**Power:** 2,400 Amps (480-Volt 3-phase)

**Bay Spacing:**  
Front Bays 50' x 50'  
Remaining Bays 50' x 60'

**Estimated Availability:** July 2027

# POSITIONED FOR PROSPERITY

Recognized as one of “America's Top Ten Towns for Families,” Westfield has transformed into one of Central Indiana’s fastest-growing communities, offering a unique blend of residential appeal with a dynamic environment for advanced manufacturing and tech enterprises.

Just 30 minutes north of Indianapolis, Westfield’s rapid development – highlighted by the renowned Grand Park Sports Complex and state-of-the-art Community Health Network – creates the perfect setting for families to thrive, talent to grow, and businesses to flourish.

## GRAND PARK SPORTS COMPLEX

- 360 acres of facilities with 31 outdoor fields
- 370,000 sq. ft. Grand Park Events Center with 3 professional turf fields, lounge, retail and office space
- Indianapolis Colts Training Camp
- Indiana Pacers Athletic Center

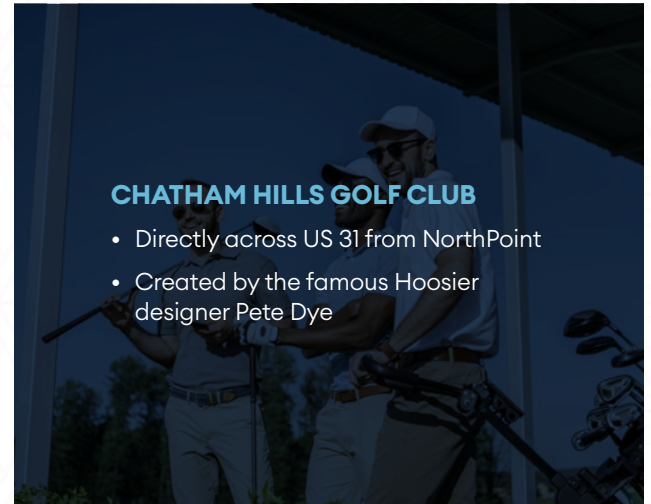


Grand Park Ranked  
Best Soccer Facility by  
Connect Sports



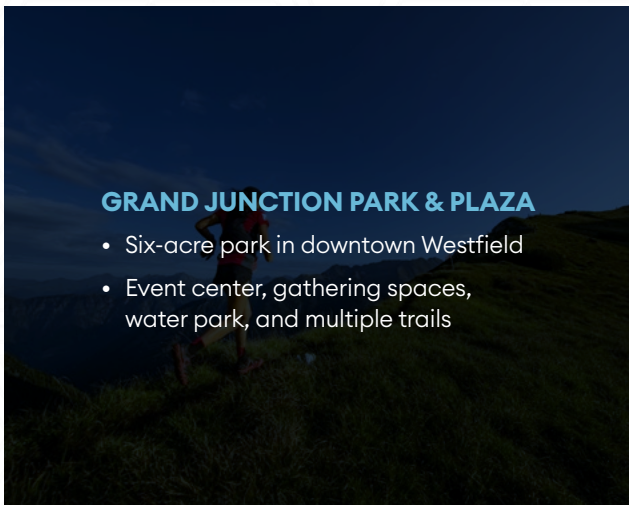
## CHATHAM HILLS GOLF CLUB

- Directly across US 31 from NorthPoint
- Created by the famous Hoosier designer Pete Dye



## GRAND JUNCTION PARK & PLAZA

- Six-acre park in downtown Westfield
- Event center, gathering spaces, water park, and multiple trails



## COMMUNITY HEALTH NETWORK

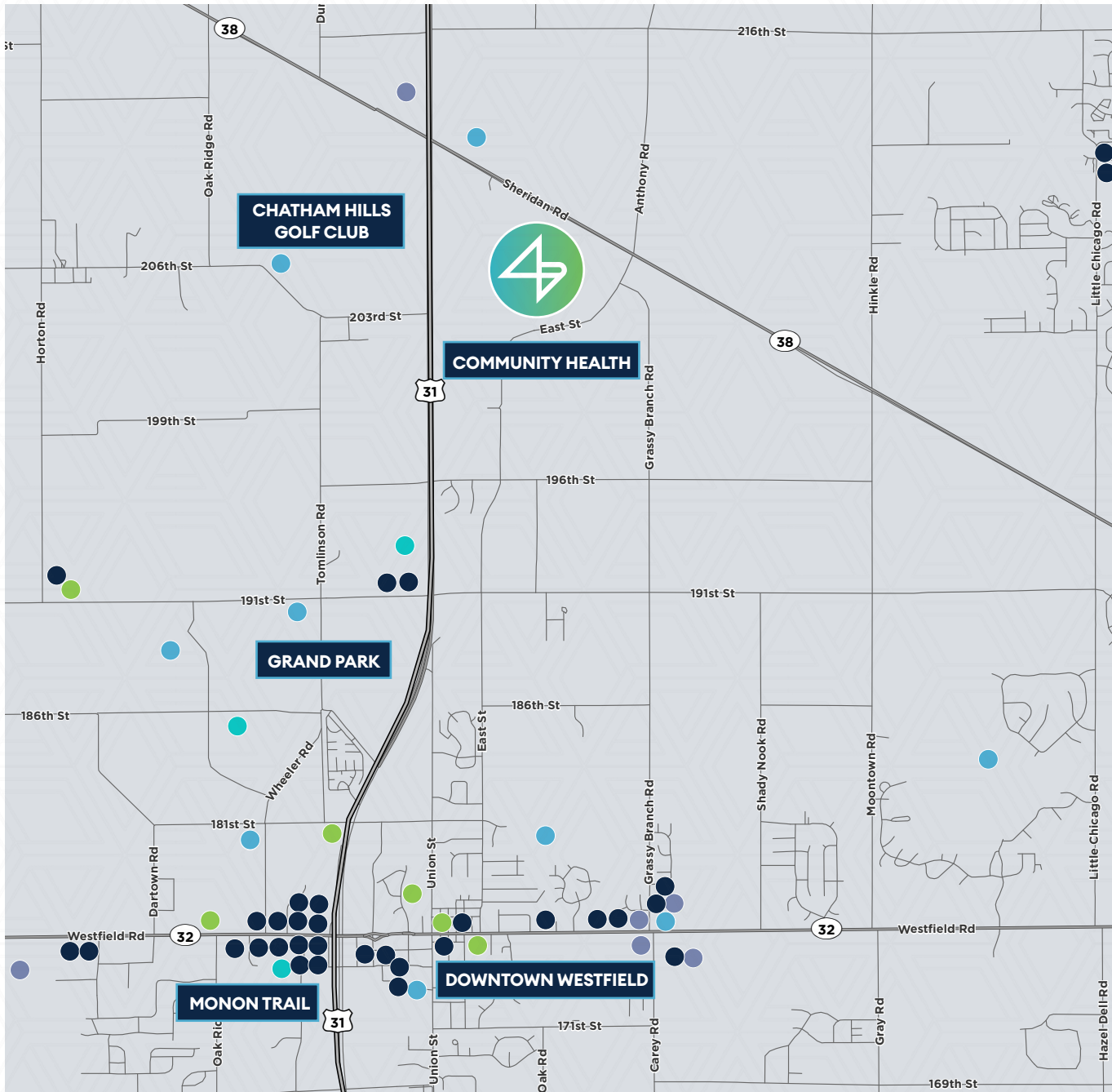
- 425,000 SF state-of-the-art healthcare campus
- Ambulatory surgery center, medical office building, emergency department, and six-story patient tower



Ranked in Top 10  
Healthiest Communities  
in America



# WESTFIELD AMENITIES



WITHIN A 3 MILE RADIUS

 **32**  
RESTAURANTS

 **6**  
RETAIL LOCATIONS

 **3**  
HOTELS

 **9**  
RECREATION AREAS

 **6**  
ENTERTAINMENT OPTIONS



Best Small Cities in America  
by Wallethub



Top 10 Places to Live in America  
by Money Magazine

# BUILDING THE WORKFORCE OF THE FUTURE

Surrounded by an impressive network of premier research institutions and programs, tenants at NorthPoint Business Park will benefit from a steady pipeline of top-tier talent.



#11 Business - Accounting  
#19 National Universities



Top 100 Public Colleges  
& Universities



Top 50  
Most Innovative Schools



#1 Engineering Programs  
#1 Chemical Engineering



#4 Entrepreneurship  
#11 Business Management



#1 Agriculture & Biological Engineering Program  
#6 Production/Operations Management  
#9 Engineering Programs  
Top 10 Most Innovative Schools



#1 Most Innovative Schools  
(Regional Midwest)  
#1 Regional Universities Midwest

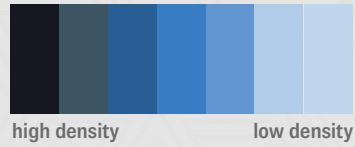
## INDIANA'S NEW APPRENTICESHIP PATHWAY PROGRAM

Pathways offered in Life Sciences, Health Care, Banking and Advanced Manufacturing

# SKILLED WORKFORCE

## Blue Collar

POPULATION DENSITY



## DEMOGRAPHICS

WITHIN 40 MIN DRIVE TIME

**132,862**

BLUE COLLAR EMPLOYEES

**4.2%**

UNEMPLOYMENT RATE

**\$82,057**

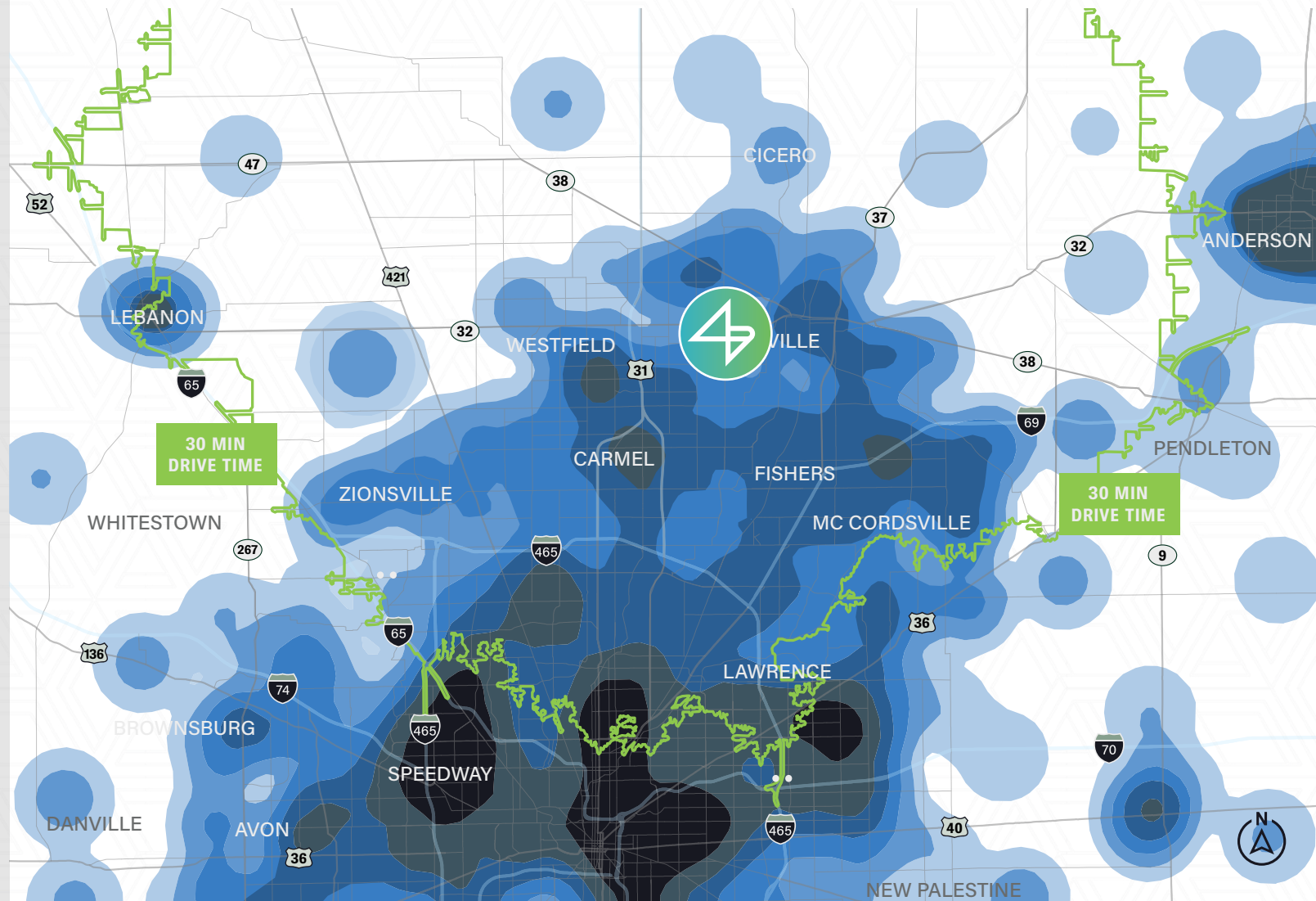
MEDIAN HH INCOME

**80.8%**

HIGH SCHOOL EDUCATED

**76.9%**

COLLEGE EDUCATED



# POSITIONED FOR GROWTH

Renowned as the "Crossroads of America," Indianapolis offers unbeatable access to major markets across the country, making it the perfect location for businesses looking to connect faster and expand further.



**#1 IN PASS**  
THROUGH HIGHWAYS



**DOWNTOWN INDIANAPOLIS**  
**30 MINUTES**



**80% OF THE US POPULATION**  
**LIVES WITHIN 650 MILES (1 DAY**  
**TRUCKING DISTANCE)**





# NORTHPOINT

For More Information, Please Contact:

**RYAN E. BAKER, SIOR, CCIM**  
*Executive Managing Director*  
+1 317 352 5428  
[ryan.baker@cushwake.com](mailto:ryan.baker@cushwake.com)

**MICHAEL W.M. WEISHAAR, SIOR**  
*Vice Chair*  
+1 317 639 0494  
[michael.weishaar@cushwake.com](mailto:michael.weishaar@cushwake.com)

**JORDAN CORBIN**  
*VP of Development*  
+1 678 640 7935

**CHRIS WILKES**  
*Senior Vice President*  
+1 317 710 6190

