

# 100 TAMAL PLAZA

NEWLY RENOVATED MEDICAL &  
PROFESSIONAL OFFICE IN CENTRAL MARIN



For More Information, Please Contact:

**Whitney Strotz**

Executive Managing Director  
+1 415 451-2406  
whitney.strotz@cushwake.com  
Lic #01351397

**Drew Soltis**

Associate  
+1 415 451-2415  
drew.soltis@cushwake.com  
Lic #: 02163430



## BUILDING OVERVIEW

100 Tamal Vista has recently undergone a comprehensive capital improvement program transforming the property into one of Central Marin's premier small format medical and professional office environments. With over \$3 million recently invested in upgrades including the installation of a new elevator, ADA path of travel improvements, renovated restrooms, modernized common areas, and enhanced suite buildouts tailored to therapy and healthcare users. The result is a highly functional, well appointed building offering boutique suite sizes in a location that continues to see strong demand from medical and wellness professionals.

## PROPERTY HIGHLIGHTS

- Recently completed \$3M+ capital improvement program
- New elevator providing full ADA access to second floor
- Modernized lobby and common areas with updated flooring, lighting and finishes
- Renovated ADA-compliant restrooms
- Upgraded suites designed for medical and psychotherapy users
- Enhanced sound proofing in select suites
- 2-story professional office building with balconies and operable windows
- Abundant shared parking
- Walkable to Corte Madera Town Center, The Village & The Marketplace
- Immediate access to Highway 101





## AVAILABILITIES

SUITE	SF
100	±1,124 SF
105	±740 SF
125	±2,790 SF
280	±782 SF

# 1ST FLOOR PLAN

## Suite 100



±1,124 SF

Asking Rate \$4.50 PSF Full Service

## Suite 105



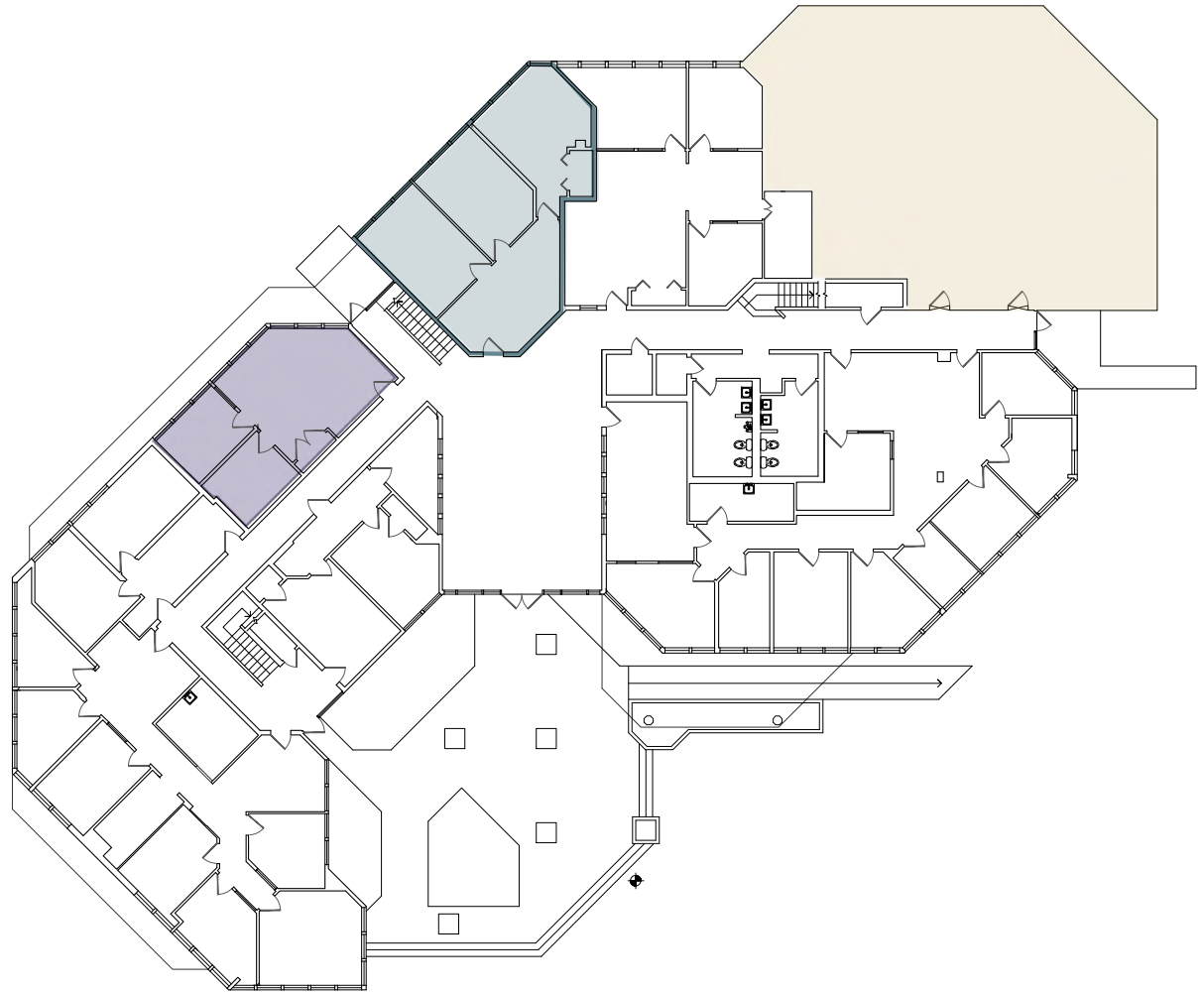
±740 SF

Asking Rate \$4.50 PSF Full Service

## Suite 125

±2,790 SF

Asking Rate \$4.50 PSF Full Service



For More Information, Please Contact:

### Whitney Strotz

Executive Managing Director

+1 415 451-2406

whitney.strotz@cushwake.com

Lic #: 01351397

### Drew Soltis

Associate

+1 415 451-2415

drew.soltis@cushwake.com

Lic #: 02163430

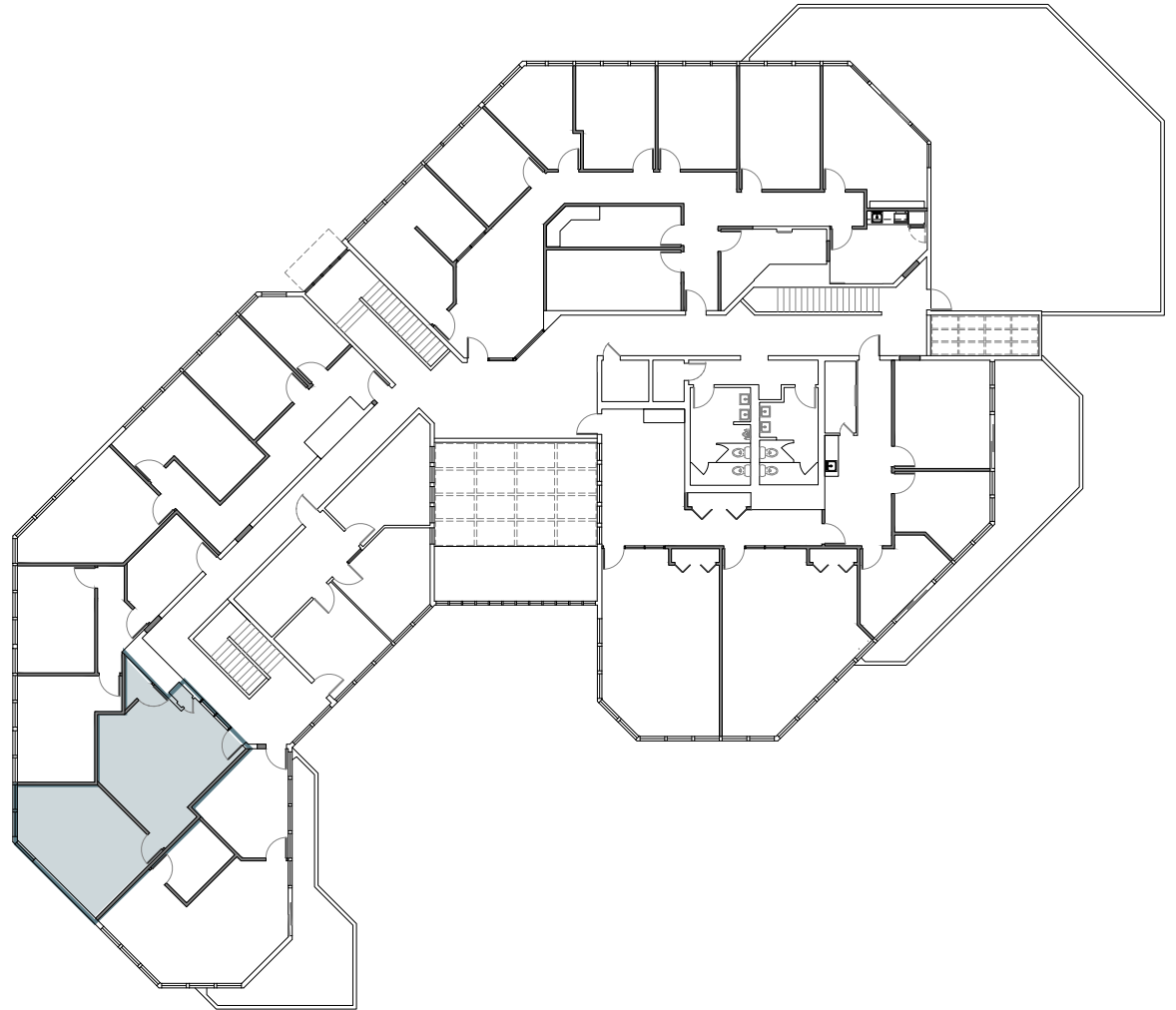


# 2ND FLOOR PLAN

## Suite 280

±782 SF

Asking Rate \$4.50 PSF Full Service



For More Information, Please Contact:

### **Whitney Strotz**

Executive Managing Director  
+1 415 451-2406  
whitney.strotz@cushwake.com  
Lic #: 01351397

### **Drew Soltis**

Associate  
+1 415 451-2415  
drew.soltis@cushwake.com  
Lic #: 02163430





100 Tamal Vista | Corte Madera, CA



# 100 TAMAL PLAZA

For More Information, Please Contact:

**Whitney Strotz**

Executive Managing Director  
+1 415 451-2406  
whitney.strotz@cushwake.com  
Lic #: 01351397

**Drew Soltis**

Associate  
+1 415 451-2415  
drew.soltis@cushwake.com  
Lic #: 02163430



©2026 Cushman & Wakefield. All rights reserved. The information contained in this communication is strictly confidential. This information has been obtained from sources believed to be reliable but has not been verified. NO WARRANTY OR REPRESENTATION, EXPRESS OR IMPLIED, IS MADE AS TO THE CONDITION OF THE PROPERTY (OR PROPERTIES) REFERENCED HEREIN OR AS TO THE ACCURACY OR COMPLETENESS OF THE INFORMATION CONTAINED HEREIN, AND SAME IS SUBMITTED SUBJECT TO ERRORS, OMISSIONS, CHANGE OF PRICE, RENTAL OR OTHER CONDITIONS, WITHDRAWAL WITHOUT NOTICE, AND TO ANY SPECIAL LISTING CONDITIONS IMPOSED BY THE PROPERTY OWNER(S). ANY PROJECTIONS, OPINIONS OR ESTIMATES ARE SUBJECT TO UNCERTAINTY AND DO NOT SIGNIFY CURRENT OR FUTURE PROPERTY PERFORMANCE. COE-PM-WEST- 02/03/22