

# BLVD OAKS – BUILDING 8

5880 W FUQUA STREET  
HOUSTON, TX 77085



# Hines

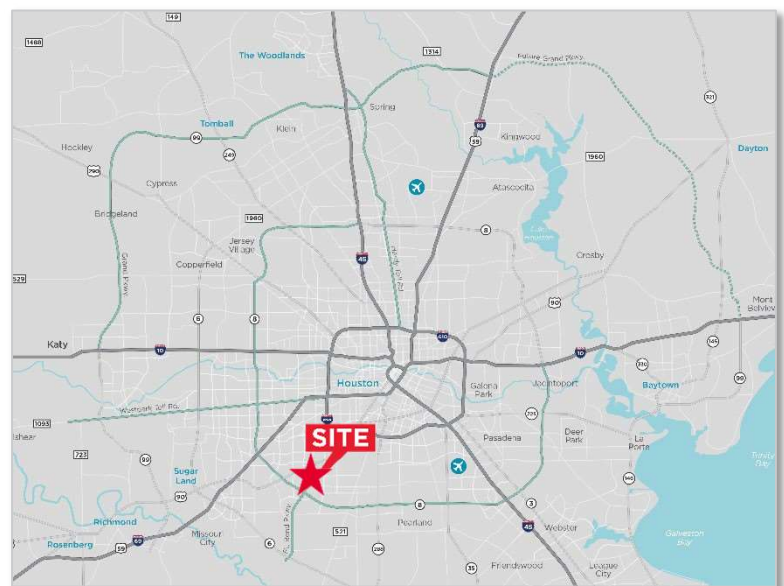
**184,153 SF CROSS DOCK AVAILABLE IN NEW CLASS-A CORPORATE PARK IN SOUTHWEST HOUSTON**



**CROSS DOCK SPACE**

## Property Highlights

- Located in Phase I of 125-acre, master-planned, deed-restricted, corporate park in Southwest Houston, just off Beltway 8
- 2,507 SF Office
- ESFR Sprinkler System
- Trailer Storage
- Secured truck Court
- Excellent access all Houston submarkets via Beltway 8, Southwest Freeway, Fort Bend Tollway, and Highway 288



For more information, please contact:

**Allison Bergmann**  
Managing Director  
Direct: +1 713 963 2865  
[allison.bergmann@cushwake.com](mailto:allison.bergmann@cushwake.com)

**Jim Foreman**  
Vice Chairman  
Direct: (713) 963 2824  
[jim.foreman@cushwake.com](mailto:jim.foreman@cushwake.com)

# BLVD OAKS – BUILDING 8

5880 W FUQUA STREET  
HOUSTON, TX 77085



CUSHMAN &  
WAKEFIELD

Hines



## CROSS DOCK

Building 8 – 5615 W Fuqua - Cross Dock

|  |                               |  |                            |
|--|-------------------------------|--|----------------------------|
| <b>184,153 SF</b><br>AVAILABLE               | <b>400</b><br>AMPS            | <b>34</b><br>DOCK<br>HIGH<br>DOORS     | <b>36'</b><br>CLEAR HEIGHT |
| <b>2,507 SF</b><br>OFFICE SPACE<br>AVAILABLE | <b>510'</b><br>BUILDING DEPTH | <b>2</b><br>OVERHEAD<br>DOORS W/ RAMPS | <b>185'</b><br>TRUCK COURT |

For more information, please contact:

**Allison Bergmann**  
Managing Director  
Direct: +1 713 963 2865  
[allison.bergmann@cushwake.com](mailto:allison.bergmann@cushwake.com)

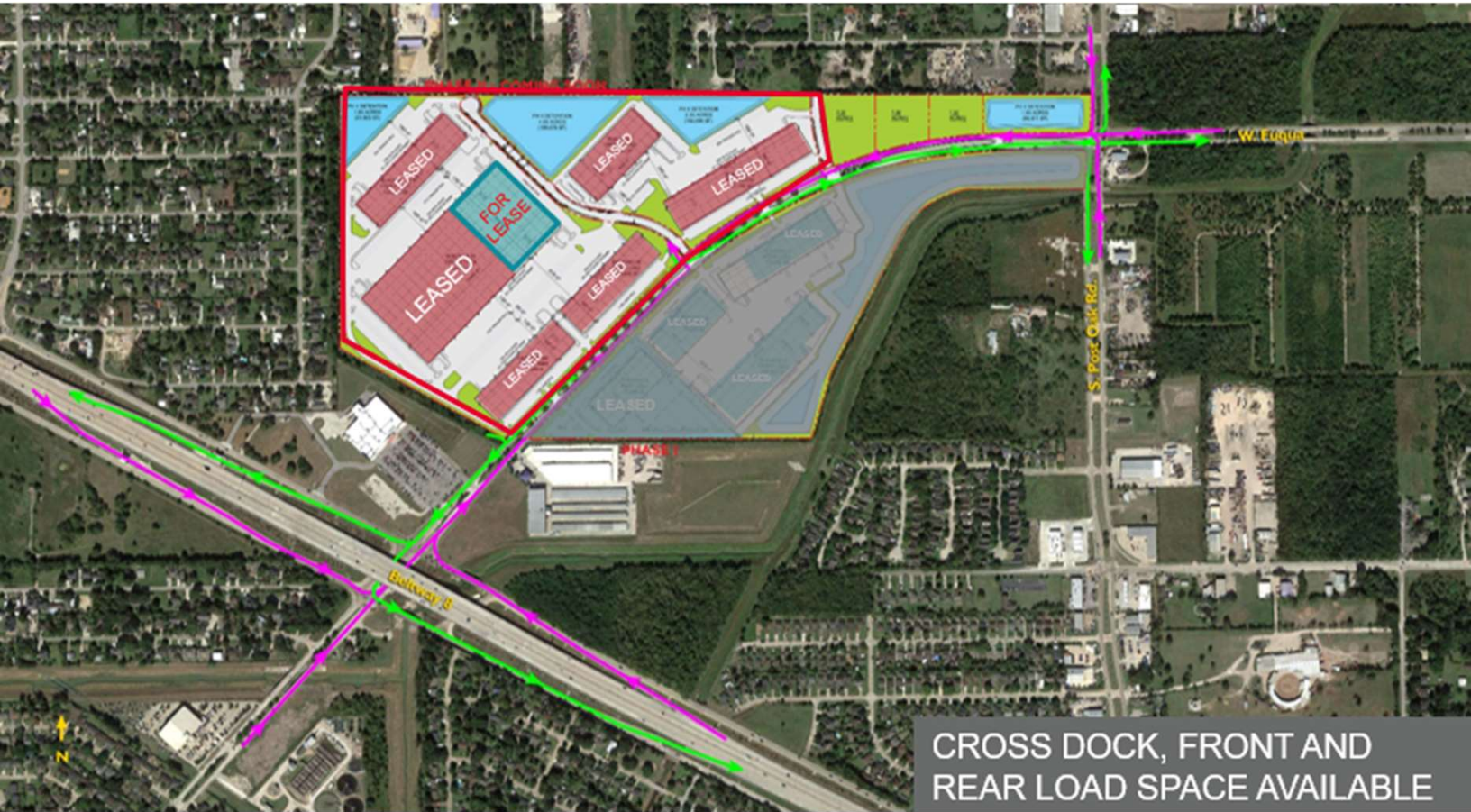
**Jim Foreman**  
Vice Chairman  
Direct: (713) 963 2824  
[jim.foreman@cushwake.com](mailto:jim.foreman@cushwake.com)

# BLVD OAKS – BUILDING 8

5880 W FUQUA STREET  
HOUSTON, TX 77085



# Hines



## PROXIMITY TO SELECT LOCATIONS IN REGION

| DESTINATION          | DISTANCE | DRIVE TIME |
|----------------------|----------|------------|
| CBD                  | 17 miles | 21 minutes |
| Texas Medical Center | 10 miles | 15 minutes |
| Galleria/Uptown      | 11 miles | 15 minutes |
| Port of Houston      | 18 miles | 20 minutes |
| Katy                 | 23 miles | 24 minutes |
| Sugar Land           | 11 miles | 12 minutes |
| I-45                 | 15 miles | 17 minutes |
| US-59                | 5 miles  | 6 minutes  |

For more information, please contact:

**Allison Bergmann**  
Managing Director  
Direct: +1 713 963 2865  
[allison.bergmann@cushwake.com](mailto:allison.bergmann@cushwake.com)

**Jim Foreman**  
Vice Chairman  
Direct: (713) 963 2824  
[jim.foreman@cushwake.com](mailto:jim.foreman@cushwake.com)