



ANTIOCH ROAD
20,000 VPD



SHAWNEE MISSION PARKWAY
40,000+ VPD

1.55 ACRES PRIME RETAIL LOCATION IN MERRIAM KANSAS FOR SALE

ANTIOCH & SHAWNEE MISSION PARKWAY SITE

**NORTH OF THE NE CORNER OF SHAWNEE MISSION PARKWAY
AND 6206 TERRYDALE STREET, MERRIAM, KS 66202**



**CUSHMAN &
WAKEFIELD**

ANTIOCH & SHAWNEE MISSION PARKWAY SITE

NORTH OF THE NE CORNER OF SHAWNEE MISSION PARKWAY
AND 6206 TERRYDALE STREET, MERRIAM, KS 66202

Prime Retail Location in Merriam Kansas



1.5 acres Positioned just **North of the NE corner of Shawnee Mission Parkway & Antioch Road** - One of Merriam's highest-traffic corridors.



Steps from the new Trader Joe's, a proven regional draw that drives steady daily traffic.



Parcel 1 ±1.00 acre fronting Antioch, zoned PUD-G, allowing for a wide range of commercial & retail uses.



Parcel 2 ±.55 acres with existing home - ideal for rezoning to expand the development footprint.

***Parcels will be sold together.**



This site offers direct exposure to Antioch with excellent access from both I-35, Shawnee Mission Parkway & Johnson Drive.



Opportunity to create a high-visibility in a tightly held retail corridor.



Close proximity to other national retailers including IKEA, Home Depot, Hobby Lobby in a location surrounded by dense residential neighborhoods.



Site is close to the highly successful Merriam Grand Station.

Call for pricing details



ANTIOCH & SHAWNEE MISSION PARKWAY SITE

NORTH OF THE NE CORNER OF SHAWNEE MISSION PARKWAY
AND 6206 TERRYDALE STREET, MERRIAM, KS 66202

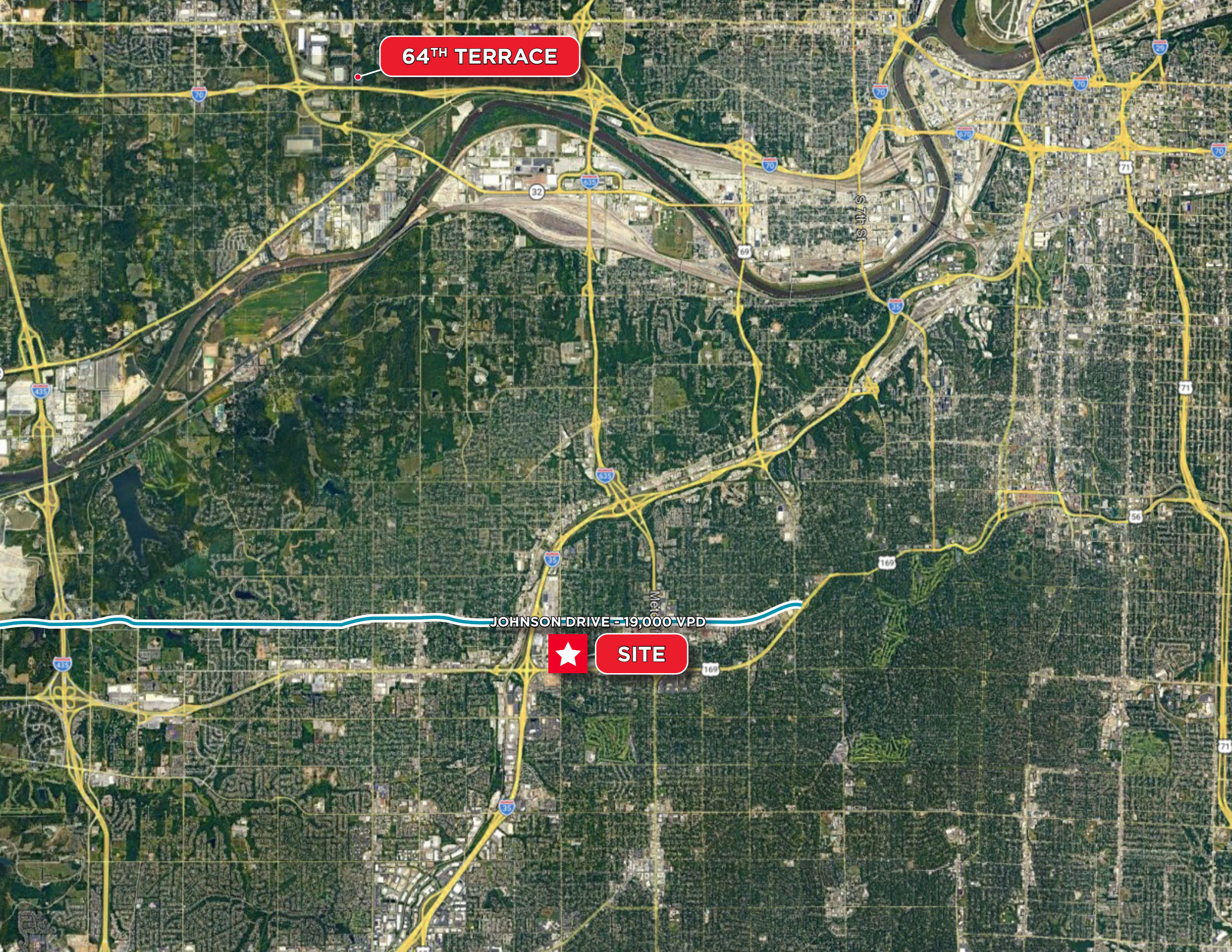


64TH TERRACE

JOHNSON DRIVE - 19,000 VPD



SITE





ANTIOCH ROAD
20,000 VPD

1

2

FOR MORE INFORMATION, CONTACT:

Marty Gilchrist, CCIM
Senior Associate
Direct: +1 816 216 5655
Mobile: +1 316 393 0703
Fax: +1 816 842 2798
marty.gilchrist@cushwake.com

©2026 Cushman & Wakefield. All rights reserved. The information contained in this communication is strictly confidential. This information has been obtained from sources believed to be reliable but has not been verified. NO WARRANTY OR REPRESENTATION, EXPRESS OR IMPLIED, IS MADE AS TO THE CONDITION OF THE PROPERTY (OR PROPERTIES) REFERENCED HEREIN OR AS TO THE ACCURACY OR COMPLETENESS OF THE INFORMATION CONTAINED HEREIN, AND SAME IS SUBMITTED SUBJECT TO ERRORS, OMISSIONS, CHANGE OF PRICE, RENTAL OR OTHER CONDITIONS, WITHDRAWAL WITHOUT NOTICE, AND TO ANY SPECIAL LISTING CONDITIONS IMPOSED BY THE PROPERTY OWNER(S). ANY PROJECTIONS, OPINIONS OR ESTIMATES ARE SUBJECT TO UNCERTAINTY AND DO NOT SIGNIFY CURRENT OR FUTURE PROPERTY PERFORMANCE. PD-186357-V4

