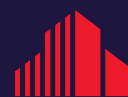


SUITE 1170 | 2,397 SF AVAILABLE FOR SUBLEASE

**36**

**TORONTO STREET**

TORONTO, ON



**CUSHMAN &  
WAKEFIELD**

# 36 TORONTO STREET

TORONTO, ON

## PROPERTY FEATURES

**Space Available:** Suite 1170 - 2,397 SF

**Net Rent:** Please Contact Sub-Listing Agents

**Additional Rent:** \$27.73 PSF Per Annum (2026 Est.)

**Term of Lease:** November 29, 2027

**Availability:** Immediate

- Move in ready professional office buildout with a mix of private offices, boardroom, and open workspace.
- Large boardroom with expansive windows, providing an excellent setting for team meetings and client presentations.
- Abundant natural light throughout the suite from large perimeter windows.
- Efficient layout with a combination of private offices and collaborative work areas, suitable for a variety of professional users.
- Staff kitchenette and reception/waiting area creating a functional and welcoming workplace environment.

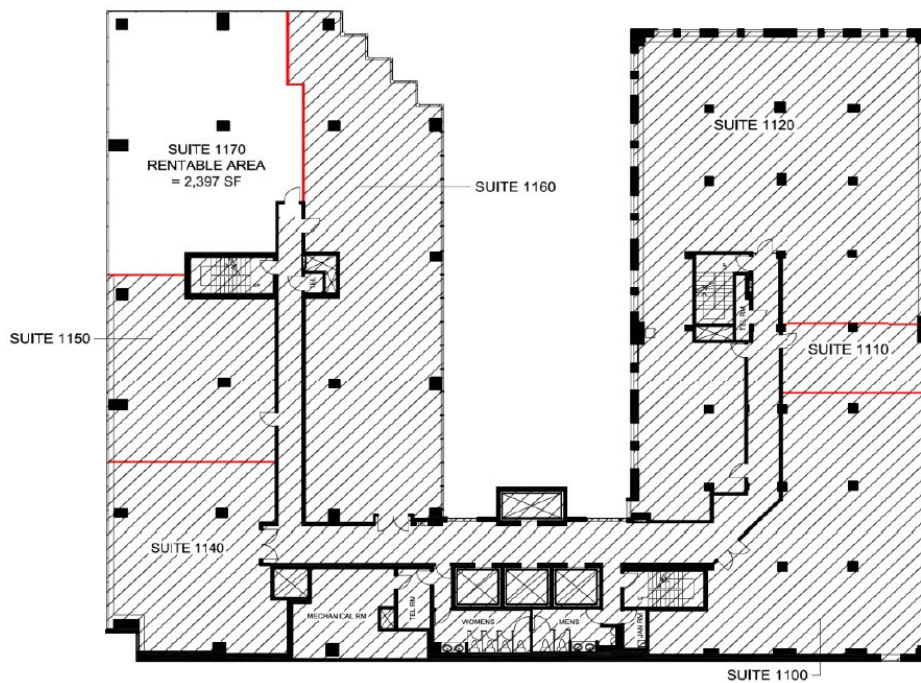
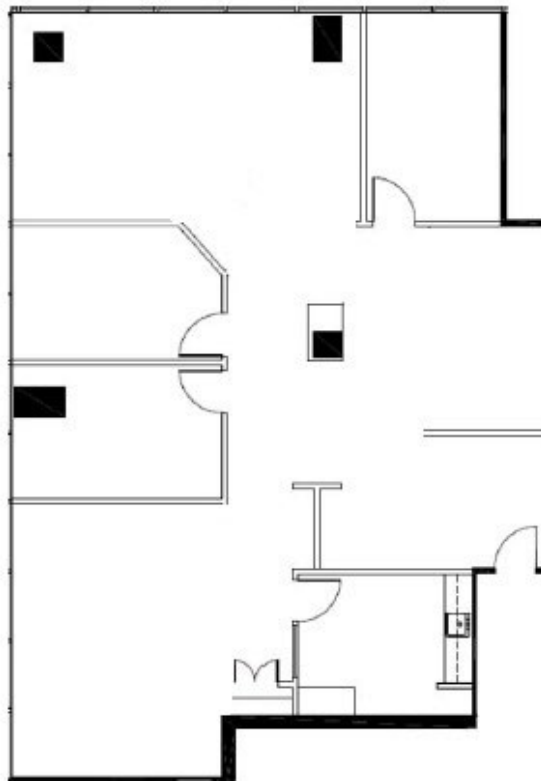


# 36 TORONTO STREET

TORONTO, ON

## FLOOR PLAN

As Built



# 36 TORONTO STREET

TORONTO, ON

## PHOTO GALLERY



**JULIAN BRANDON\***  
Vice Chair  
+1 416 564 0376  
julian.brandon@cushwake.com

©2026 Cushman & Wakefield. All rights reserved. The information contained in this communication is strictly confidential. This information has been obtained from sources believed to be reliable but has not been verified. NO WARRANTY OR REPRESENTATION, EXPRESS OR IMPLIED, IS MADE AS TO THE CONDITION OF THE PROPERTY (OR PROPERTIES) REFERENCED HEREIN OR AS TO THE ACCURACY OR COMPLETENESS OF THE INFORMATION CONTAINED HEREIN, AND SAME IS SUBMITTED SUBJECT TO ERRORS, OMISSIONS, CHANGE OF PRICE, RENTAL OR OTHER CONDITIONS, WITHDRAWAL WITHOUT NOTICE, AND TO ANY SPECIAL LISTING CONDITIONS IMPOSED BY THE PROPERTY OWNER(S). ANY PROJECTIONS, OPINIONS OR ESTIMATES ARE SUBJECT TO UNCERTAINTY AND DO NOT SIGNIFY CURRENT OR FUTURE PROPERTY PERFORMANCE. \*Sales Representative

