



INDUSTRIAL UNIT FOR LEASE 1,100 SF

18 ROBB BOULEVARD, UNIT 4

ORANGEVILLE ON



CUSHMAN & WAKEFIELD

18 ROBB BOULEVARD, UNIT 4

ORANGEVILLE ON

Property Overview

This industrial unit is situated one of Orangeville's established industrial/commercial corridors. The surrounding area includes a mix of light industrial, service commercial and logistics-oriented businesses with close proximity to Highway 9, providing easy east/west access to Newmarket, Aurora and Highway 400.

Unit 4: 1,100 square feet

Office Space: +/-5% office space

Clear Height: 10 feet

Shipping: 1 drive in door

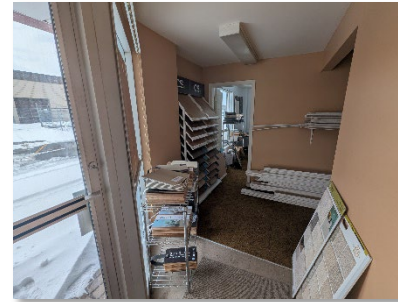
Availability: Immediate

Net Rent: \$17.00 per square foot

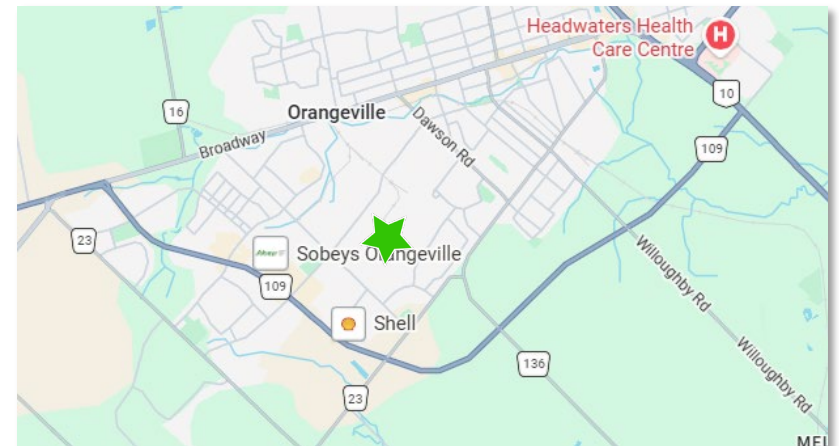
TMI: \$6.21 per square foot (2025 estimate)

- Comments:
- Well maintained industrial unit for lease
 - Ideal unit configuration with minimal office, small reception, washroom and open warehouse space
 - Available immediately

Unit Photos



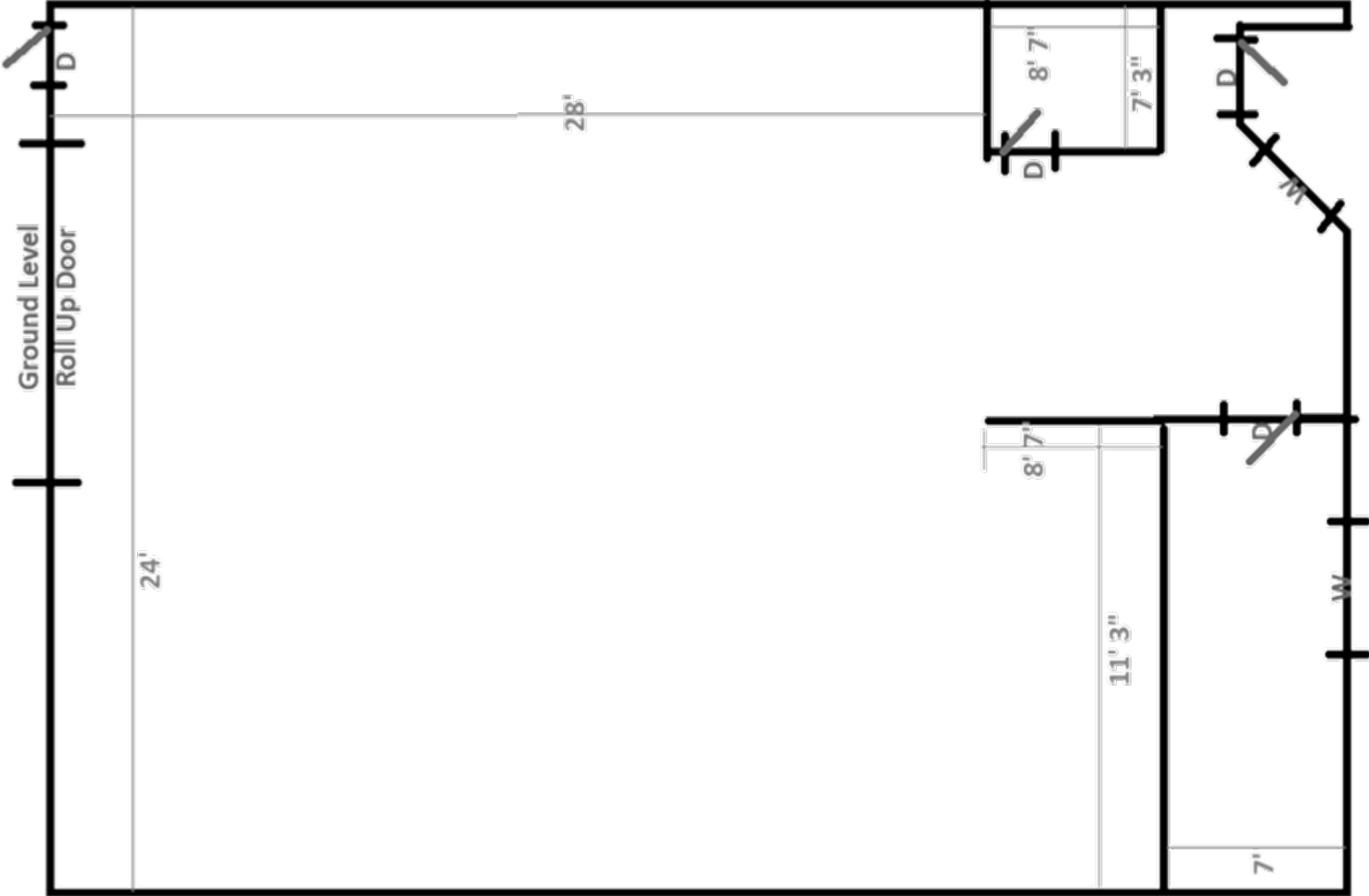
Location Map



18 ROBB BOULEVARD, UNIT 4

ORANGEVILLE ON

Floor Plan





FOR MORE INFORMATION, CONTACT:

MELISSA SMITH*

Senior Associate

416 756 5480

melissa.smith@ca.cushwake.com

©2026 Cushman & Wakefield. All rights reserved. The information contained in this communication is strictly confidential. This information has been obtained from sources believed to be reliable but has not been verified. NO WARRANTY OR REPRESENTATION, EXPRESS OR IMPLIED, IS MADE AS TO THE CONDITION OF THE PROPERTY (OR PROPERTIES) REFERENCED HEREIN OR AS TO THE ACCURACY OR COMPLETENESS OF THE INFORMATION CONTAINED HEREIN, AND SAME IS SUBMITTED SUBJECT TO ERRORS, OMISSIONS, CHANGE OF PRICE, RENTAL OR OTHER CONDITIONS, WITHDRAWAL WITHOUT NOTICE, AND TO ANY SPECIAL LISTING CONDITIONS IMPOSED BY THE PROPERTY OWNER(S). ANY PROJECTIONS, OPINIONS OR ESTIMATES ARE SUBJECT TO UNCERTAINTY AND DO NOT SIGNIFY CURRENT OR FUTURE PROPERTY PERFORMANCE. *SENIOR ASSOCIATE

