



S KINGS HWY

OKEECHOBEE RD

3814: 1,750 SF

3808: 1,750 SF

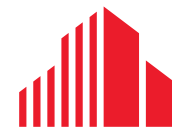
CROSSROADS PARKWAY



FOR LEASE \$15.00/SF NNN

FLEX INDUSTRIAL UNITS

3802-3815 CROSSROADS PARKWAY
FORT PIERCE, FL 34945



CUSHMAN &
WAKEFIELD

FLEX INDUSTRIAL UNITS

3802-3815 CROSSROADS PARKWAY, FORT PIERCE, FL 34945

Property Overview

These flex industrial units offer versatile space ideal for light industrial, service, and operational needs. Each unit features a convenient office and roll-up door, allowing efficient loading, unloading, and workflow movement. The units are designed to accommodate a wide range of business types, providing both functionality and flexibility.

Located just minutes from the Florida Turnpike and I-95, the property offers excellent regional connectivity for distribution, logistics, and service-based operations. Tenants benefit from strong transportation access, making it easy to reach customers throughout the Treasure Coast and beyond. This strategic location, paired with practical industrial features, makes these units a strong choice for growing businesses.

Property Features

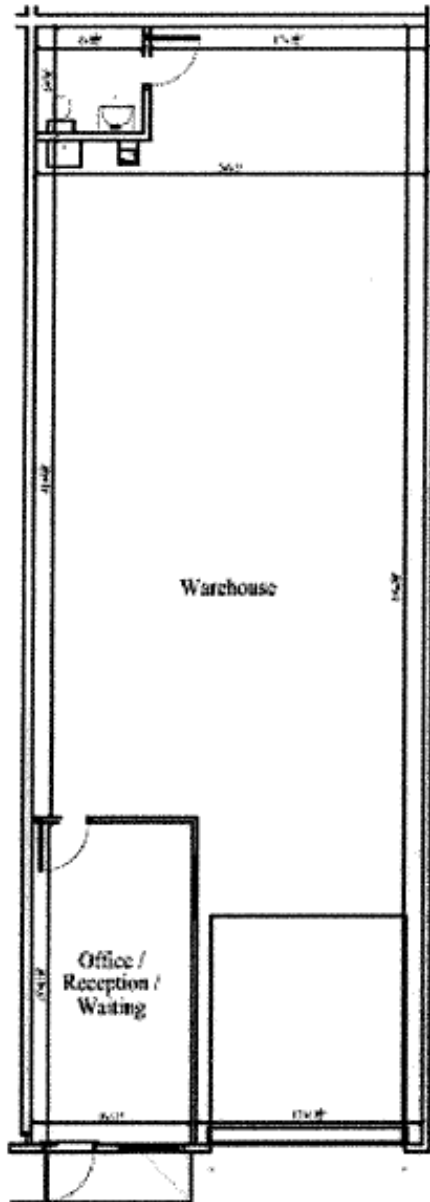
Address:	3802 Crossroads Parkway Fort Pierce, FL 34945
Lease Price:	\$15.00/SF NNN
Building Size:	40,180 SF
Available Space:	3814 Crossroads Parkway: 1,750 SF 3808 Crossroads Parkway: 1,750 SF
Zoning:	Comm Parkw
Jurisdiction:	Fort Pierce
Ceiling Height:	18'
Roll-Up Doors:	12' x 14'
Year Built:	2005



FLEX INDUSTRIAL UNITS

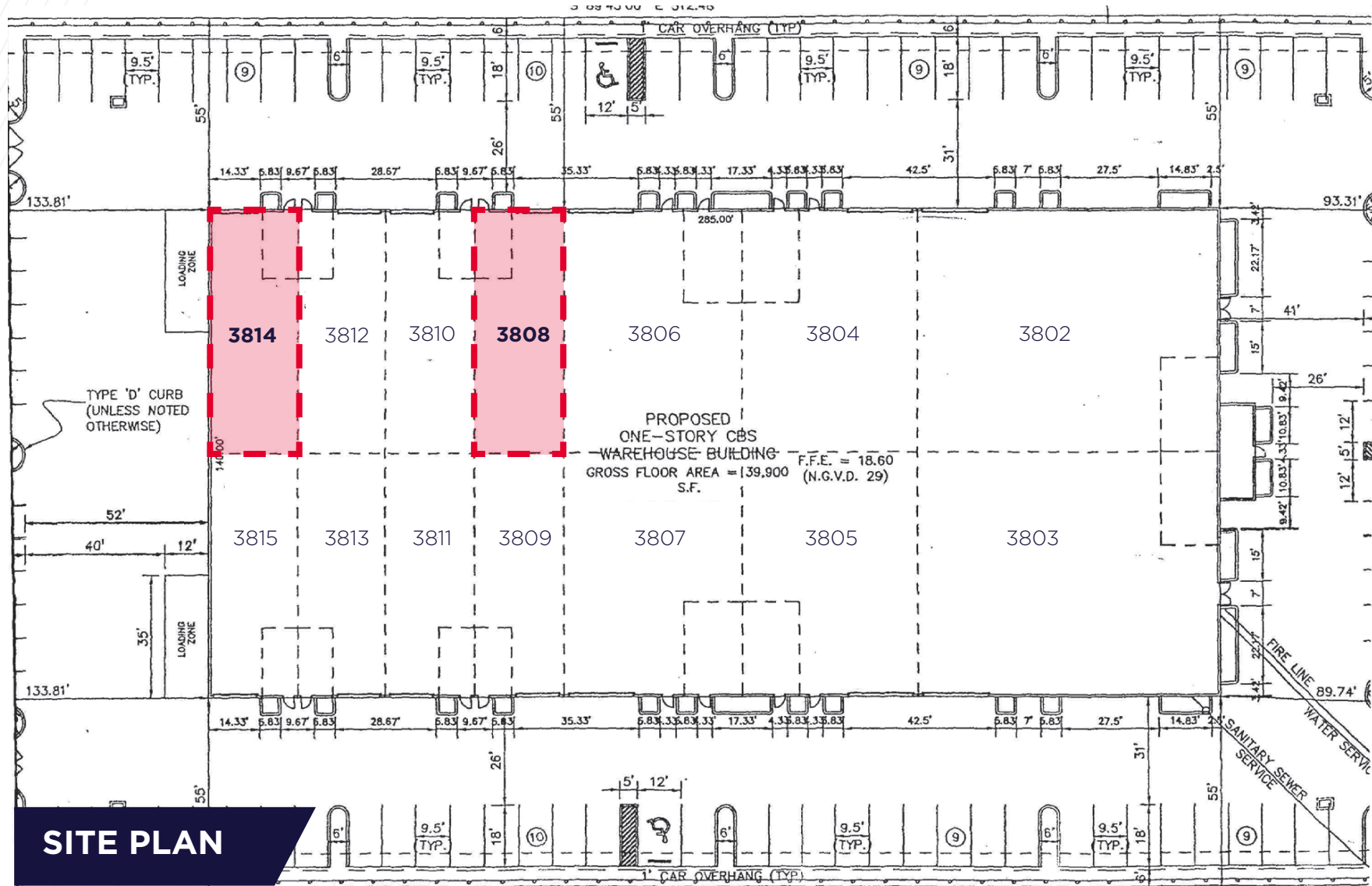
3802-3815 CROSSROADS PARKWAY, FORT PIERCE, FL 34945

FLOOR PLAN



FLEX INDUSTRIAL UNITS

3802-3815 CROSSROADS PARKWAY, FORT PIERCE, FL 34945



SITE PLAN

LOOKING NORTH



S KINGS HWY



OKEECHOBEE RD

3814: 1,750 SF

3808: 1,750 SF

CROSSROADS PARKWAY

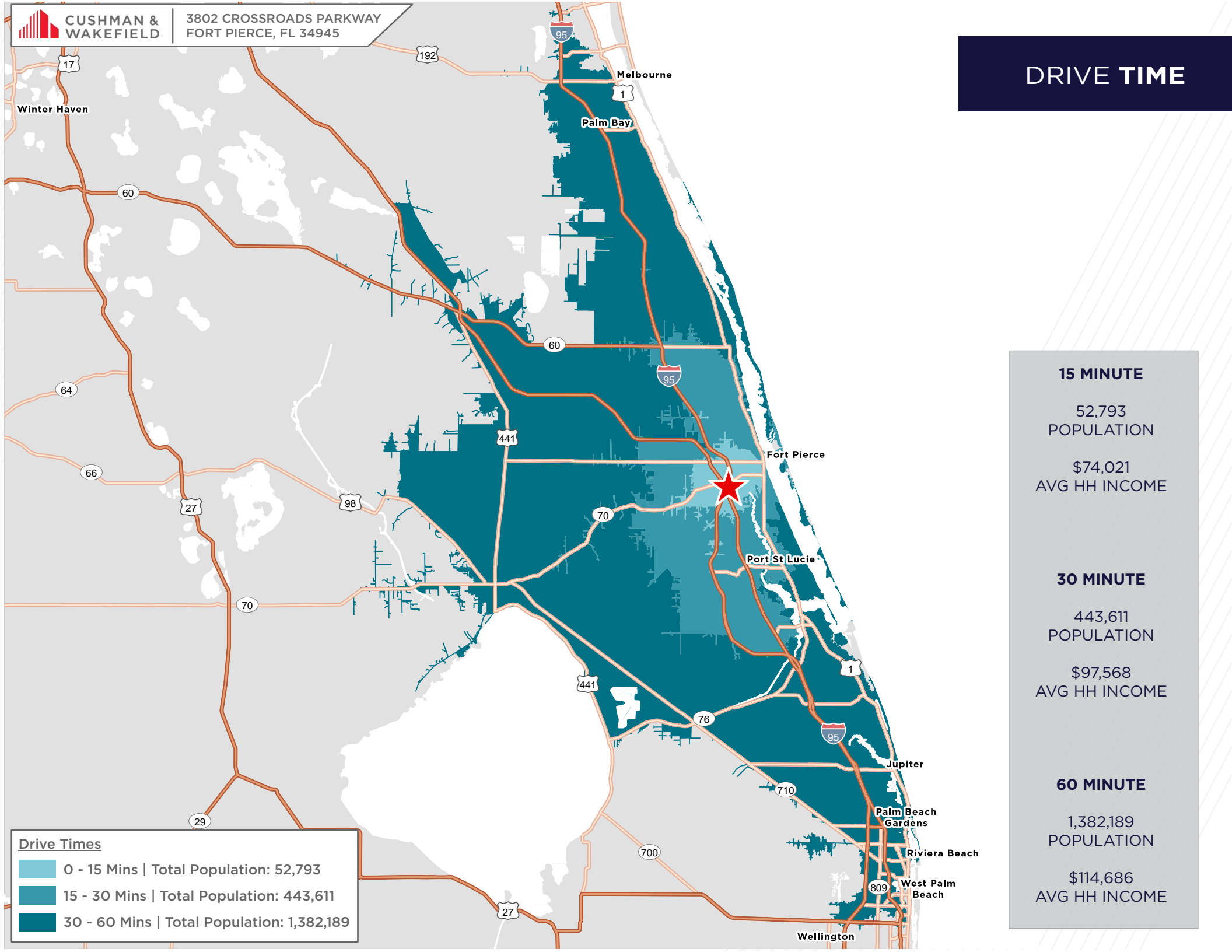
INTERSTATE
COMMERCE CENTER



INTERSTATE CROSSROADS
LOGISTICS CENTER



DRIVE TIME



15 MINUTE

52,793
POPULATION

\$74,021
AVG HH INCOME

30 MINUTE

443,611
POPULATION

\$97,568
AVG HH INCOME

60 MINUTE

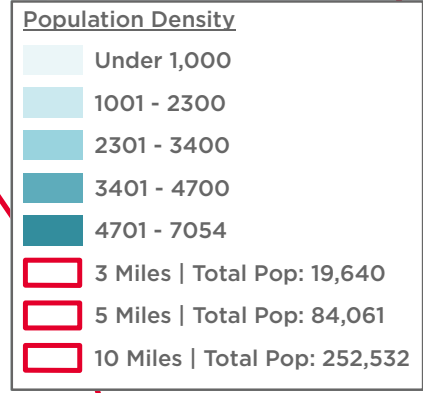
1,382,189
POPULATION

\$114,686
AVG HH INCOME

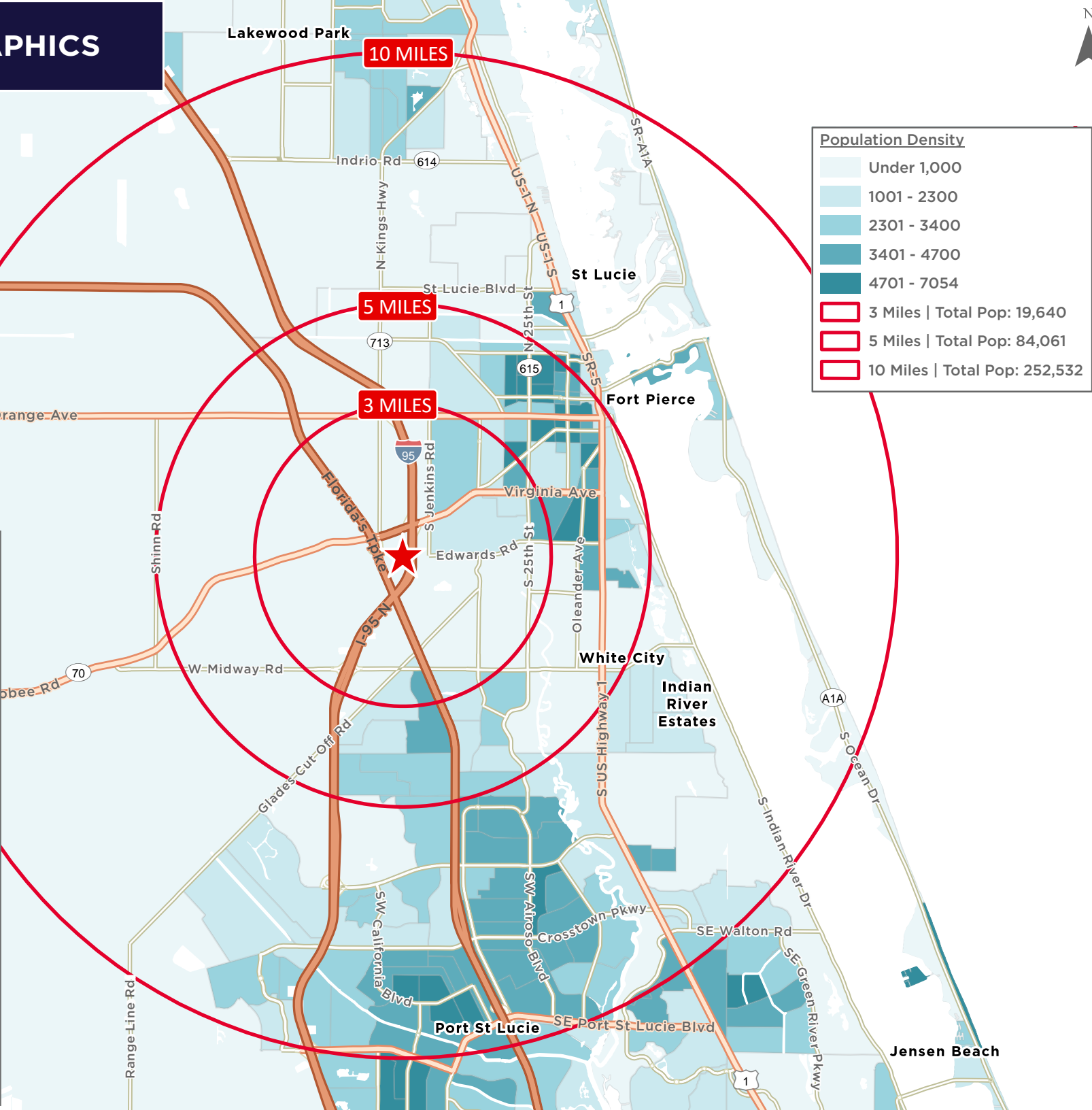
Drive Times

- 0 - 15 Mins | Total Population: 52,793
- 15 - 30 Mins | Total Population: 443,611
- 30 - 60 Mins | Total Population: 1,382,189

2025 DEMOGRAPHICS



Population	
3 Miles:	19,640
5 Miles:	84,061
10 Miles:	252,532
Average Household Income	
3 Miles:	\$89,320
5 Miles:	\$77,783
10 Miles:	\$88,163
Median Age	
3 Miles:	37.4
5 Miles:	39.0
10 Miles:	45.9



CITY OVERVIEW

City of Port Saint Lucie, Florida

Fort Pierce is famous for being a quaint fishing village, but take a closer look and you will find a treasure trove of activities. As one of the most diverse communities on the Treasure Coast, Fort Pierce has the cultural excitement to rival any “big city” atmosphere. With weekly and monthly events and premier shows at the Sunrise Theatre, visitors never run out of things to do or people to meet.

Fort Pierce is located on the pristine Indian River Lagoon with one of the best all-weather inlets in the state of Florida. Even though Fort Pierce is known for its world class fishing, some visitors would rather take an eco-friendly motorized kayak down the Indian River or dolphin watch on a tour boat. Paddle boarding and horseback riding on unspoiled beaches is also a hit among tourists. Fort Pierce’s natural beauty is world renowned.

Our cultural enhancements include the Zora Neale Hurston Trail, commemorating the noted author and anthropologist who lived her last years in Fort Pierce and the Highwaymen Heritage Trail. The Highwaymen, also referred to as the Florida Highwaymen, are 26 storied, world-renown African American landscape artists who originated in the City of Fort Pierce. Visitors from all over the United States visit Fort Pierce to experience the Highwaymen Heritage Trail, a self-guided engaging and educational experience that recognizes these mostly self-taught landscape artists who have strong local, state, national and international significance.

Museums in Fort Pierce include the newly-enlarged Florida landscape artist A.E. “Beanie” Backus museum and the St. Lucie Regional History Museum, with its satellite Adams Cobb Cultural Museum in the P.P. Cobb Building. Fort Pierce’s most popular tourist attraction, the National UDT Navy SEAL museum, commemorates the birth of the Navy frogmen here in Fort Pierce, and chronicles the evolution of this military unit to today’s Navy SEALs.

Fort Pierce City Marina is home to the Southern Kingfish Association’s National Championship Fishing Tournament every three years bringing 250-300 fishing teams to Downtown Fort Pierce. SKA has also committed to add Fort Pierce to the tournament’s Pro Tour schedule during the off years.

ST. LUCIE COUNTY, FLORIDA

Extensive, dependable transportation and easy access is the key to growth, and St. Lucie County has both in abundance. Interstate Highway 95 and U.S. Highway 1 provide easy access to the country's east coast, from Key West to Maine. The Florida Turnpike stretches from just south of Miami through northern-central Florida, while State Road 70 runs from U.S. Highway 1 in Fort Pierce west to Bradenton, Florida. St. Lucie County offers a plethora of transportation linkages which include rail, a custom-serviced international airport, and a deep-water port - all of which enable easy access to all St. Lucie County has to offer. The St. Lucie County International Airport is also one of the busiest general aviation airports in the state.

The county has a population of over 375,226 and has experienced growth of over 35% since 2010. The area economy is a blend of emerging life science R&D with traditional manufacturing, agriculture, tourism and services. St. Lucie County's natural resources are enviable, with more than 21 miles of pristine coastline and beaches, coral reefs, more than 20,000 acres of public parks and nature preserves, and miles of rivers and waterways. The area boasts over 20 public and semiprivate courses, with prices ranging from upscale to very affordable, and the great weather allows for play all year round. St. Lucie County is home to Clover Park in Port St. Lucie, the Spring training home of the New York Mets.

The county is host to Indian River State College, an institution that has won national recognition for excellence and innovation applied toward training and education. St. Lucie County boasts 52 schools with a total of 45,661 students and 8,800 staff. The Economic Development Council of St. Lucie County (EDC) is a non-profit organization with the goal of creating more, high-paying jobs for residents by working in concert on agreed upon strategies to promote the retention and expansion of existing businesses, as well as attracting new ones to St. Lucie County. Workers employed in St. Lucie County are clustered in the Health Care and Social Assistance (18.4%), and Retail Trade (11.9%) industries. Workers living in St. Lucie County are concentrated in the Health Care and Social Assistance (16.3%), and Retail Trade (14.1%) industries. Since 2017 the EDC has facilitated 40 expansion and new attraction job creating projects with a net growth of building area of approximately 6,500,000 square feet.

REGIONAL OVERVIEW





S KINGS HWY

OKEECHOBEE RD

3814: 1,750 SF

3808: 1,750 SF

CROSSROADS PARKWAY

FOR MORE INFORMATION, CONTACT:



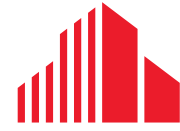
DOUGLAS LEGLER
Senior Director
M: +1 772 405 7778
O: +1 772 678 7606
doug.legler@cushwake.com



CASEY COMBS
Director
M: +1 772 285 8769
O: +1 772 678 7611
casey.combs@cushwake.com



©2026 Cushman & Wakefield. All rights reserved. The information contained in this communication is strictly confidential. This information has been obtained from sources believed to be reliable but has not been verified. NO WARRANTY OR REPRESENTATION, EXPRESS OR IMPLIED, IS MADE AS TO THE CONDITION OF THE PROPERTY (OR PROPERTIES) REFERENCED HEREIN OR AS TO THE ACCURACY OR COMPLETENESS OF THE INFORMATION CONTAINED HEREIN, AND SAME IS SUBMITTED SUBJECT TO ERRORS, OMISSIONS, CHANGE OF PRICE, RENTAL OR OTHER CONDITIONS, WITHDRAWAL WITHOUT NOTICE, AND TO ANY SPECIAL LISTING CONDITIONS IMPOSED BY THE PROPERTY OWNER(S). ANY PROJECTIONS, OPINIONS OR ESTIMATES ARE SUBJECT TO UNCERTAINTY AND DO NOT SIGNIFY CURRENT OR FUTURE PROPERTY PERFORMANCE.



CUSHMAN & WAKEFIELD