

FOR SUBLEASE

780 AEC DRIVE

WOOD DALE, IL



19,276 SF AVAILABLE FOR SUBLEASE

Sublease Through September 2028

\$9.75/SF GROSS

**AVAILABLE
IMMEDIATELY**

PROPERTY FEATURES



19,276
TOTAL BUILDING SF

1.08
ACREAGE

2 Interior Docks
LOADING

\$1.85 PSF
REAL ESTATE TAX

19,276
AVAILABLE SF

1987
YEAR BUILT

31
CAR PARKING

\$9.75 Gross
ASKING RATE

9,992
OFFICE SF

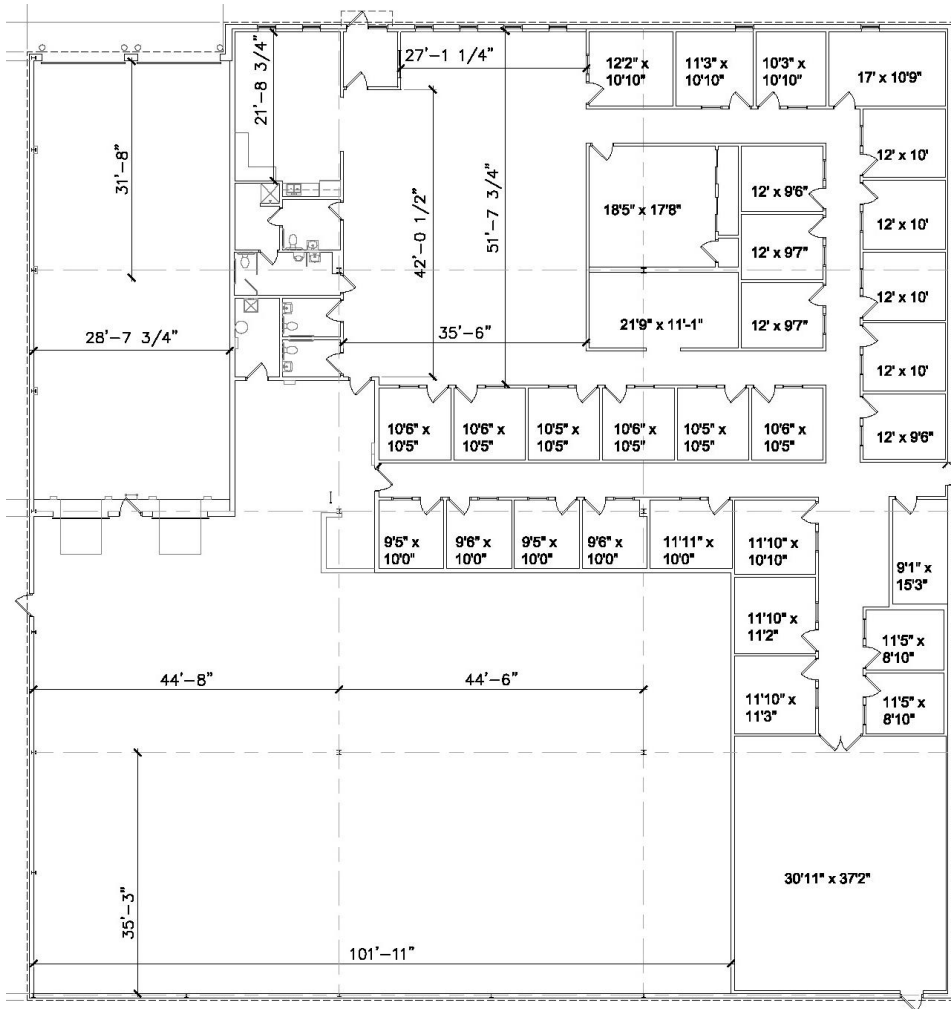
18'
CLEAR HEIGHT

800a / 120/208v / 3-Phase
POWER

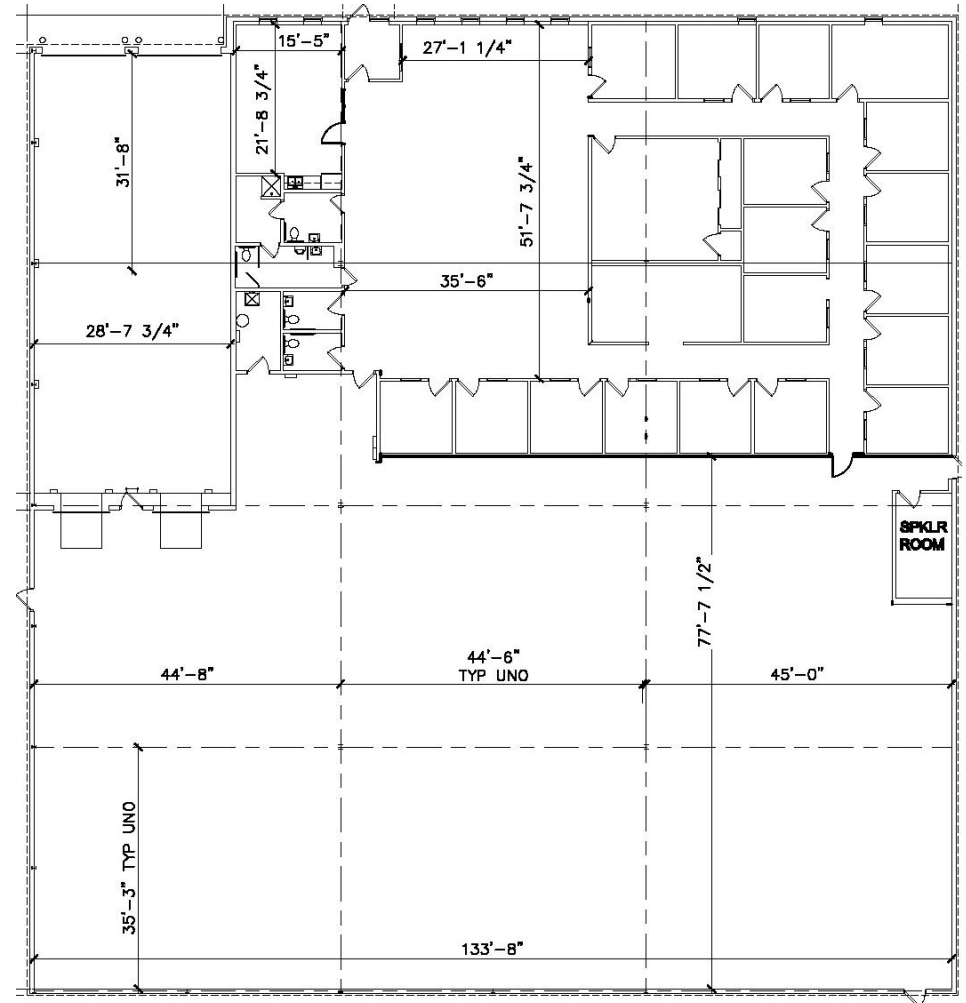
- Institutional ownership with professional management
- Free standing building
- Easy access to I-390
- Office reduction potential

PROPERTY SITE PLAN

EXISTING



OFFICE REDUCTION CONCEPT





**780 Aec Drive
Wood Dale, IL**

.8 Mile to I-390
1.5 Miles to IL-83
3 Miles to I-290

Al Caruana
Executive Managing Director
+1 847 720 1326
Al.Caruana@cushwake.com

Michael Labek
Senior Associate
+1 312 470 2309
Michael.Labek@cushwake.com

Michael Stacy
Director
+1 312 871 5004
Michael.Stacy@cushwake.com