

# Paloma

## Retail Space

Columbia & S Linder Road  
MERIDIAN, ID 83642

**New Retail Development  
Up to 11,300 SF Available**

**For Sale or Lease with  
Option to Purchase**

**March 2027 Delivery**



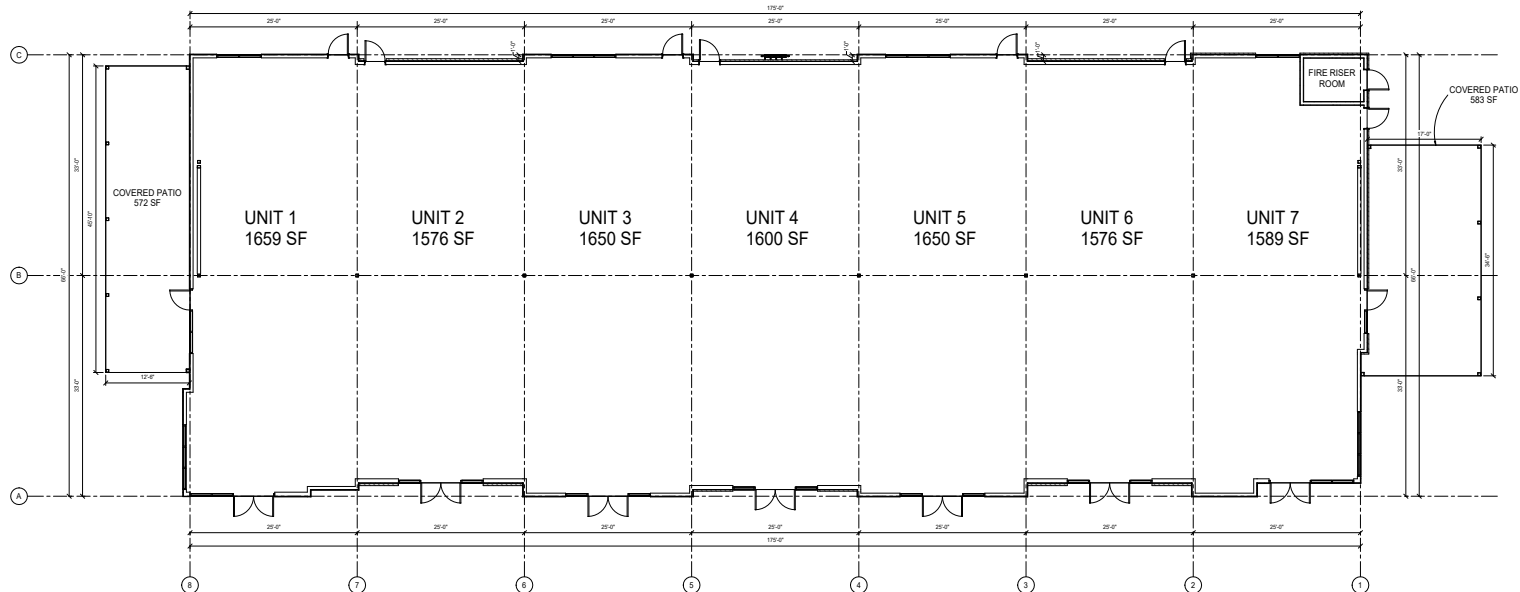
# AVAILABILITY

SALE PRICE:	\$560/SF	LOT SIZE:	1.0 Acre
LEASE RATE:	\$40.00/SF	ZONING:	City of Kuna-R-4
AVAILABLE:	<b>1,600 - 11,300 SF</b>	PARCEL #	R6888660140
LEASE TYPE:	NNN	CONSTRUCTION:	March 2027 Delivery
T.I. ALLOWANCE:	\$50.00/SF		340 Houses Planned

## Listing Features

- Linder Road overpass to be completed March 2027
- Ideal spot for retail, dining, and service businesses
- 1/2 mile from Kuna's newest high school - Swan Falls High School
- Nestled among vibrant new and upcoming residential communities
- Kuna is a rapidly growing city

## Floorplans



# BUILDING RENDERINGS



① BLDG A - WEST RENDERING

SCALE: 1/8" = 1'-0"



② BLDG A - EAST RENDERING

SCALE: 1/8" = 1'-0"



③ BLDG A - SOUTH RENDERING

SCALE: 1/8" = 1'-0"



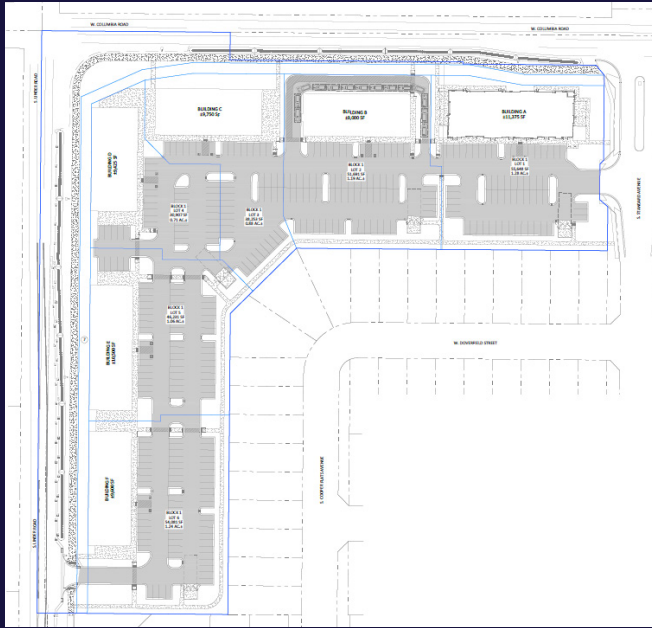
④ BLDG A - NORTH RENDERING

SCALE: 1/8" = 1'-0"



# AERIAL MAP

## Paloma Retail Space



RETAIL - RESTAURANT - OFFICE  
 PAD SALE | LEASE | BUILD-TO-SUIT SUITES  
 1350-1522 EAST DEER FLAT ROAD, KUNA, IDAHO 83634



## Kuna

W KUNA RD

W AVALON ST

E AVALON ST

E KUNA RD



SWAN FALLS HIGH SCHOOL

S LINDER RD

W COLUMBIA RD

E COLUMBIA RD

W HUBBARD RD

W ARDELL RD

N MERIDIAN RD

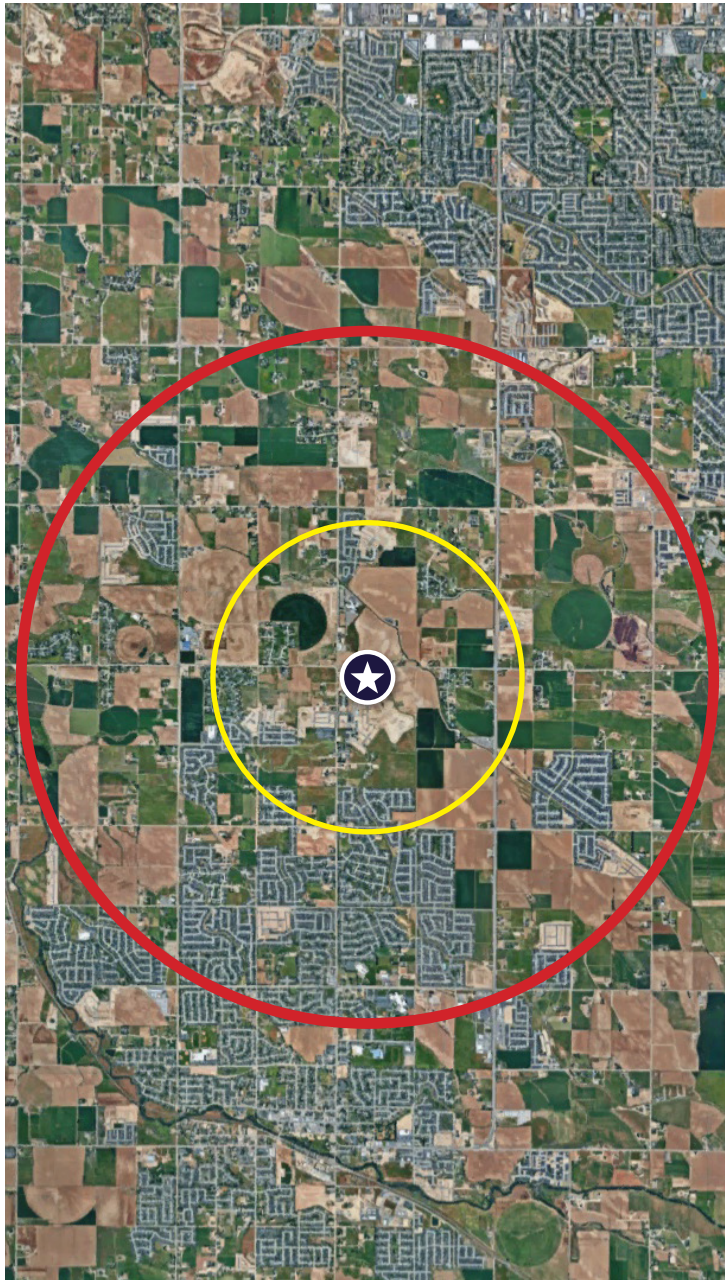
W DEER FLAT RD

E DEER FLAT RD

N LINDER RD



# HOUSING DEMOGRAPHICS



	1 mile	3 miles	5 miles
<b>Population Summary</b>			
2010 Total Population	832	15,642	49,142
2020 Total Population	1,838	24,045	74,043
2020 Group Quarters	0	46	351
2025 Total Population	2,627	33,907	93,284
2025 Group Quarters	0	47	339
2030 Total Population	3,813	40,275	105,959
2024-2029 Annual Rate	7.74%	3.50%	2.58%
2025 Total Daytime Population	1,470	20,623	68,296
Workers	135	4,928	25,726
Residents	1,335	15,695	42,570

	1 mile	3 miles	5 miles
<b>Household Summary</b>			
2010 Households	241	4,961	16,311
2010 Average Household Size	3.45	3.15	3.00
2020 Total Households	564	7,837	25,261
2020 Average Household Size	3.26	3.06	2.92
2025 Households	853	11,489	32,787
2025 Average Household Size	3.08	2.95	2.83
2030 Households	1,256	13,827	37,849
2030 Average Household Size	3.04	2.91	2.79
2024-2029 Annual Rate	8.05%	3.77%	2.91%
2010 Families	212	4,013	13,261
2010 Average Family Size	3.65	3.49	3.31
2025 Families	728	9,088	25,301
2025 Average Family Size	3.32	3.30	3.24
2030 Families	1,064	10,937	29,090
2030 Average Family Size	3.29	3.26	3.20
2024-2029 Annual Rate	7.89%	3.77%	2.83%

	1 mile	3 miles	5 miles
<b>Median Household Income</b>			
2025	\$111,131	\$101,452	\$106,738
2030	\$148,300	\$115,853	\$120,167

	1 mile	3 miles	5 miles
<b>Median Home Value</b>			
2025	\$661,350	\$562,072	\$596,236
2030	\$844,542	\$724,458	\$742,823

	1 mile	3 miles	5 miles
<b>Per Capita Income</b>			
2025	\$51,217	\$47,228	\$49,970
2030	\$61,714	\$54,877	\$57,077

	1 mile	3 miles	5 miles
<b>Median Age</b>			
2010	34.6	29.3	32.5
2025	33.5	34.3	36.5
2030	34.0	35.5	37.4

# CONTACT

## Jennifer McEntee

Senior Director  
Office | Capital Markets  
+1 208 287 9495  
jennifer.mcentee@cushwake.com

## Bree Wells

Director  
Office | Capital Markets  
+1 208 287 9492  
bree.wells@cushwake.com

## Braydon Torres

Associate  
Office | Capital Markets  
+1 208 207 9485  
braydon.torres@cushwake.com



999 W Main St #1300, Boise, ID 83702 | +1 208 287 9500 |  
cushmanwakefield.com

©2026 Cushman & Wakefield. All rights reserved. The information contained in this communication is strictly confidential. This information has been obtained from sources believed to be reliable but has not been verified. NO WARRANTY OR REPRESENTATION, EXPRESS OR IMPLIED, IS MADE AS TO THE CONDITION OF THE PROPERTY (OR PROPERTIES) REFERENCED HEREIN OR AS TO THE ACCURACY OR COMPLETENESS OF THE INFORMATION CONTAINED HEREIN, AND SAME IS SUBMITTED SUBJECT TO ERRORS, OMISSIONS, CHANGE OF PRICE, RENTAL OR OTHER CONDITIONS, WITHDRAWAL WITHOUT NOTICE, AND TO ANY SPECIAL LISTING CONDITIONS IMPOSED BY THE PROPERTY OWNER(S). ANY PROJECTIONS, OPINIONS OR ESTIMATES ARE SUBJECT TO UNCERTAINTY AND DO NOT SIGNIFY CURRENT OR FUTURE PROPERTY PERFORMANCE. PD-188828 V2

