

FOR LEASE

140 CHAMPLAIN ST

SUITE 207 | DIEPPE, NB





PROPERTY OVERVIEW

This property is ideally positioned in the heart of Dieppe, the suite offers **strong visibility** and convenient access to surrounding amenities.

Suite 207 features a bright, **open-concept design** with a practical layout and accessibility. **Large windows** allow for ample natural light, and **on-site parking** is available.

The space is **available immediately** and offers a **flexible interior** suitable for various office, commercial, or retail operations.

The suite has the electricity and janitorial services included.

NB136620
MLS

207
Suite

\$18.00 PSF NET
Lease rate

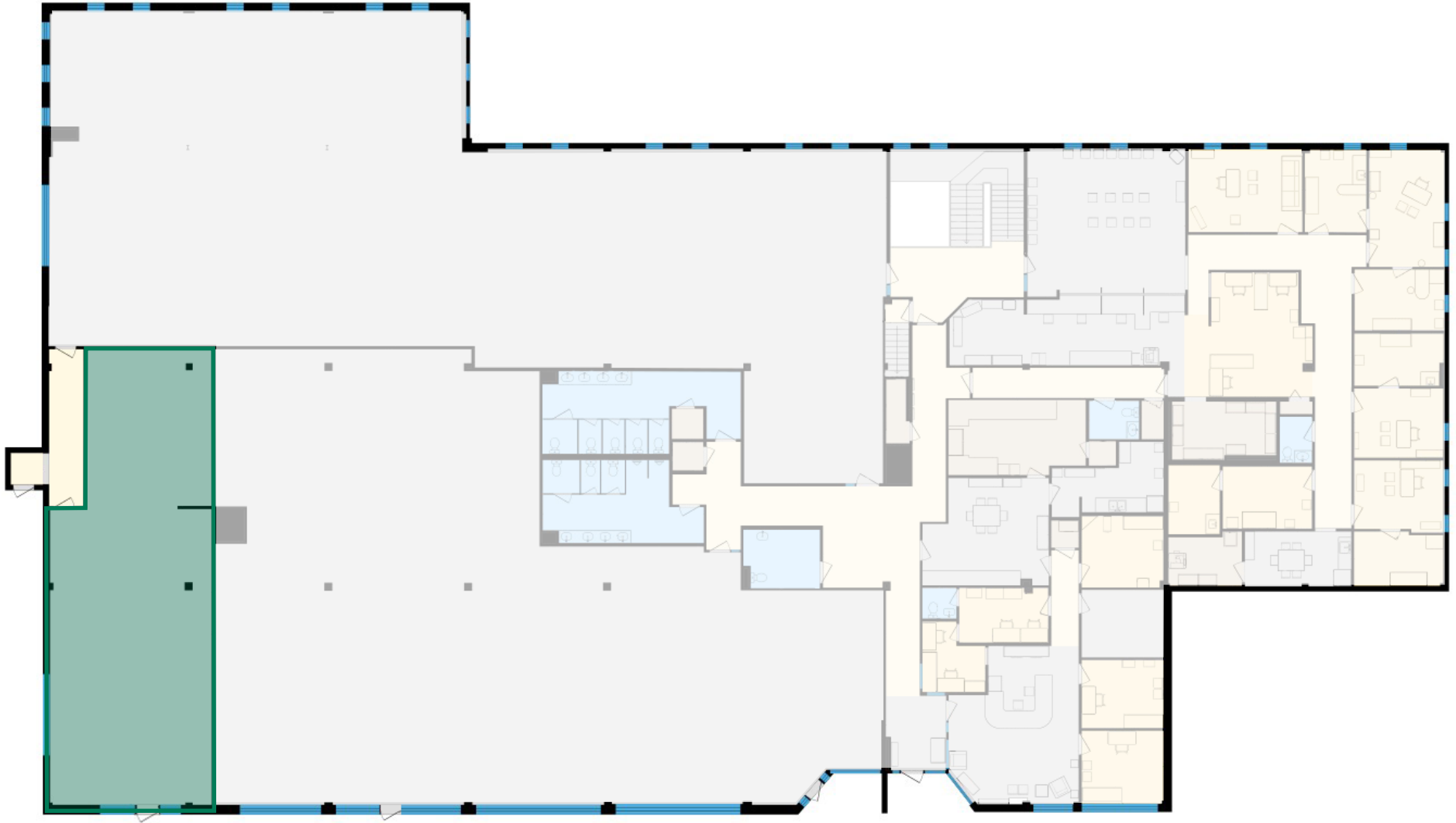
1,942.21 sf
Size

MAIN FLOOR
Level

**MIXED
COMMERCIAL USE**
Building Type



FLOOR PLANS



● SUITE 207 | 1,942 SF

MAP LOCATION

This property, strategically located on Champlain Street, is situated in the heart of Dieppe and enjoys close proximity to Greater Moncton and various amenities.

The area is well-connected, providing easy access to major transportation routes, including Main Street and Wheeler Boulevard, which ensures efficient connectivity to public transportation.





ADAM MAGEE
Managing Director NB/NL
+1 506 872 2507
amagee@cwatlantic.com

SUZIE TAYLOR
Commercial Real Estate Advisor
+1 506 380 1777
staylor@cwatlantic.com