

WEST 25TH OFFICE FOR LEASE

2012 West 25th Street, Cleveland, Ohio 44113

1,520 SF & 2,300 SF

W 25th Street
16,068 VPD



West 25th Office

- 1,520 and 2,300 SF (3,820 contiguous) first floor office space available right on the corner of W 25th and Lorain
- Reserved parking spaces are available
- Directly across from INTRO (297 luxury apartments, 98% occupied), and adjacent to proposed Carriage Co. redevelopment (130 apartments proposed with ground floor retail space)
- Neighboring tenants include Citizens Bank, Avo Modern Mexican, Le Burger (now open), Jaja, Citizen's Pie, SWTHZ (now open), Bank of America, W Nail Bar, and Barry Bagels (coming soon), among others

Lease Rate: Contact Brokers



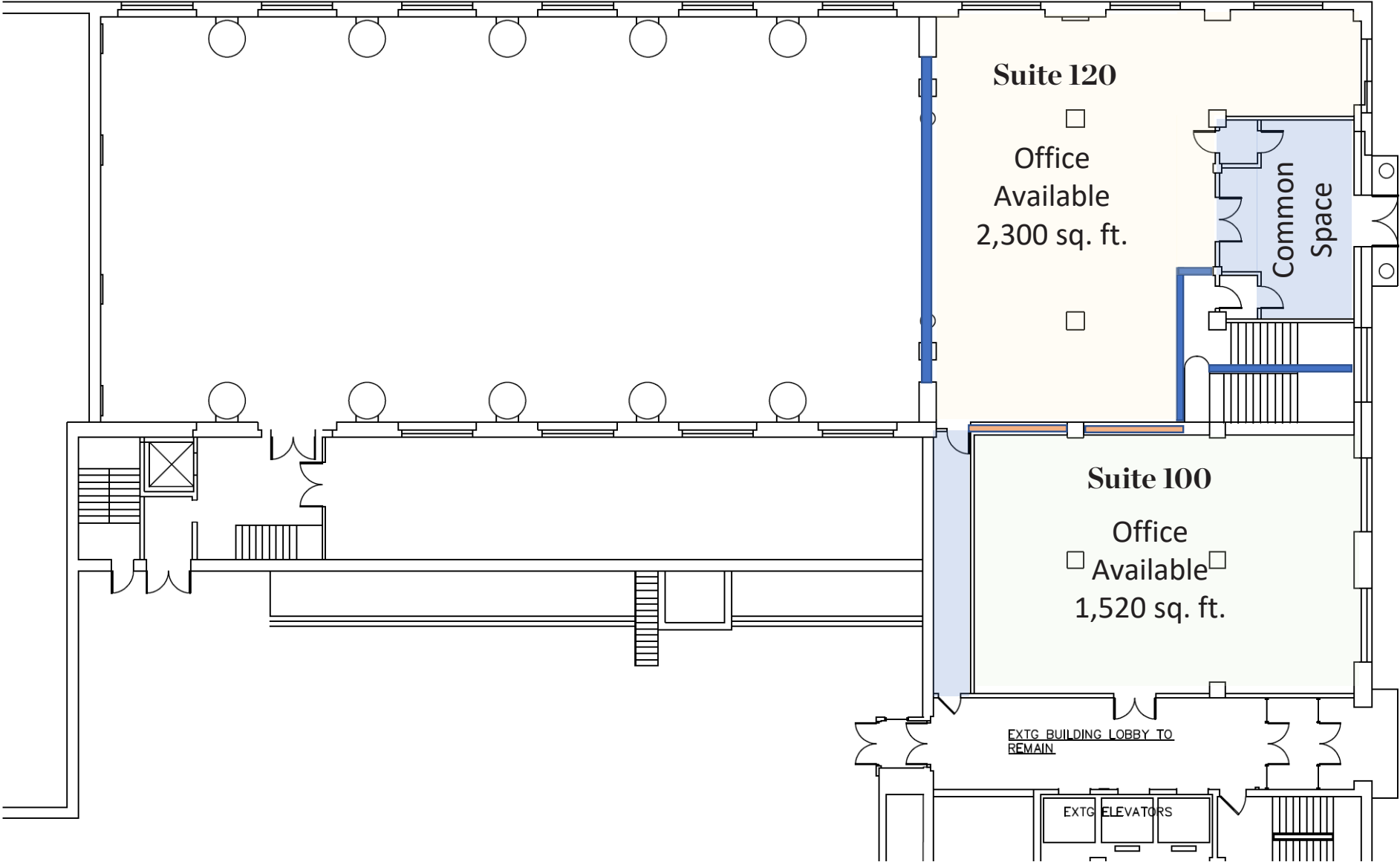
Sign Potential

AI Generated Photo

Full W 25th Office Availability

Suite	Size	Max Contiguous
100	1,520 SF	3,820 SF
120	2,300 SF	3,820 SF

Floor Plan



12,787
Population
(2024 | Ohio City)

35.0
Median Age
(2024 | Ohio City)

6,864
Households
(2024 | Ohio City)

\$101,083
Household Income
(2024 | Ohio City)

636
Total Businesses
(2024 | Ohio City)

6,426
Total Employees
(2024 | Ohio City)



OHIO CITY

CHURCH + STATE
CORUS 45
Gxo
great lakes
GREEN OPAL
TAILOR

Roaming Biscuit
DOG BAKERY
LUCA'S BARKERY
BOUTIQUE
VERBEN
Avalon
EXCHANGE
PATRON SAINT

BEET JAR
CONRADO

CO HATCH
haven
NAIL STUDIO

RISING STAR
coffee roasters

BANANA BLOSSOM
THAI CUISINE

BOOKHOUSE BREWING

Lutheran Hospital
a Cleveland Clinic Hospital

TABLETOP
BOARD GAME CAFE

OHIO CITY
BURRITO

M
MOMENTUM

MANO
BREW

CHELVAN
BREWERY

MARKET & GARDEN
BREWERY

Hooples

RTA

INTRO
EDDA
COFFEE ROASTERS
PIONEER

2012 W 25th St

Saint Ignace High School
Cleveland • 1886

Wendy's

Johnny Mango
World Cafe & Bar

phoenix
coffee co.

Heck's
CAFE

bright side
GREAT LAKES
BREWING CO.

Partleby

AVO

CLEVELAND
MOFFET

CITIZEN
BREWERY

CLEVELAND PUBLIC LIBRARY

GROCERY

M
MARATHON

planet
fitness

Residential in the Area


Over 6,800 units built since 2016
 Over 1,200 units under construction
 Average Rent: \$2.20/SF

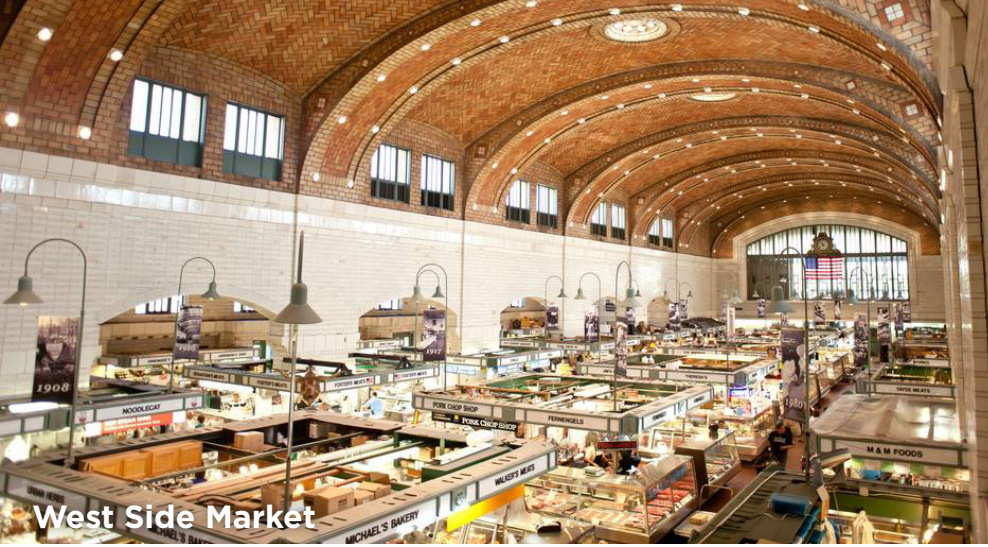


OHIO CITY		UNITS
1	Church & State	161
2	Clinton West	70
3	The Dexter	116
4	The Edison	306
5	Edge 32	62
6	Franklin West	24
7	Intro	300
8	Mariner's Watch	62
9	Messina	32
10	The Quarter	232
11	The Quarter Phase II	79
12	The Quarter Phase 3	80
13	Tinnerman Lofts	51
14	W. 25th Lofts	83
15	Welleon	127
16	Harbor Row Townhomes	11
17	Intro Phase II	TBD
18	Shoreway Tower	95
19	Voss Redevelopment	130
20	Station 73 at Battery Park	258
21	Bridgeworks	140

TREMONT		UNITS
22	Electric Gardens	130
23	The Lincoln	82
24	The Parallax	9
25	Scranton Carriage Works	7
26	Tapan Apartments	95
27	APL Apartments	95
28	TREO	171
29	West 20th Apartments	80
30	Abbey Avenue Apts	132

DOWNTOWN		UNITS
31	The Athlon at The CAC	164
32	The Beacon	187
33	Euclid Grand	240
34	Flats East Bank - Ph. 3	309
35	The Garfield	125
36	Harbor Verandas	16
37	The Leader Building	220
38	The Lumen	318
39	The May	308
40	Reserve Square	980
41	Residences at Halle	122
42	Residences at Terminal Tower	303
43	Standard Building	281
44	The Statler	295
45	W. 9th Lofts	12
46	Worthington Yards	98
47	Public Square North	281
48	Thunderbird	300
49	The Peninsula	316

 Proposed



West Side Market



Great Lakes Brewing



Forest City Shuffleboard

Ohio City

Ohio City, one mile west of Downtown Cleveland, is buzzing with energy. In this trendy neighborhood, there's always something going on, especially on West 25th Street. This street is lined with popular dining from high-end cocktail bars and beer gardens to farm-to-table restaurants and unbeatable entertainment hubs with Ohio City's signature artsy feel. One of the most notable landmarks is the 100-year-old West Side Market. With over one million visitors annually, the West Side Market is loved by tourist and locals, with all the fresh meats, cheeses, fruits, veggies, baked goods, flowers, gifts, and crafts from over 100 locally owned and independent businesses. Rated the #2 suburb in Cleveland, Ohio City is home to over 250 local businesses, 60 of which are new in the last three years.

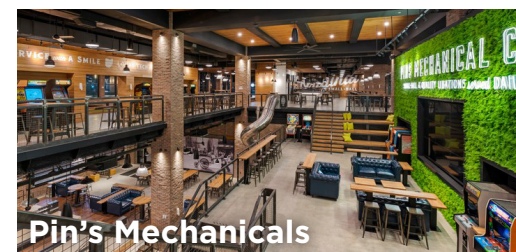
Attractions



Mitchell's Ice Cream



Market Garden



Pin's Mechanicals



Ohio City Farm



2012 WEST 25TH STREET CLEVELAND, OHIO, 44113

RICO A PIETRO, SIOR
Principal
rpietro@crescorealestate.com
+1 216 525 1473

KIRSTEN PARATORE
Senior Associate
kparatore@crescorealestate.com
+1 216 525 1491

ROBBY MARTINELLI
Senior Associate
rmartinelli@crescorealestate.com
+1 216 232 4104



Cushman & Wakefield | CRESCO
6100 Rockside Woods Blvd, Suite 200
Cleveland, Ohio 44131

crescorealestate.com

©2026 Cushman & Wakefield. All rights reserved. The information contained in this communication is strictly confidential. This information has been obtained from sources believed to be reliable but has not been verified. NO WARRANTY OR REPRESENTATION, EXPRESS OR IMPLIED, IS MADE AS TO THE CONDITION OF THE PROPERTY (OR PROPERTIES) REFERENCED HEREIN OR AS TO THE ACCURACY OR COMPLETENESS OF THE INFORMATION CONTAINED HEREIN, AND SAME IS SUBMITTED SUBJECT TO ERRORS, OMISSIONS, CHANGE OF PRICE, RENTAL OR OTHER CONDITIONS, WITHDRAWAL WITHOUT NOTICE, AND TO ANY SPECIAL LISTING CONDITIONS IMPOSED BY THE PROPERTY OWNER(S). ANY PROJECTIONS, OPINIONS OR ESTIMATES ARE SUBJECT TO UNCERTAINTY AND DO NOT SIGNIFY CURRENT OR FUTURE PROPERTY PERFORMANCE.