

4016 - 4025 STIRRUP CREEK DRIVE

DURHAM, NC



TBC

INSPIRING LIFE SCIENCE INNOVATIONS



WWW.TBCLIFESCIENCE.COM

 CUSHMAN &
WAKEFIELD

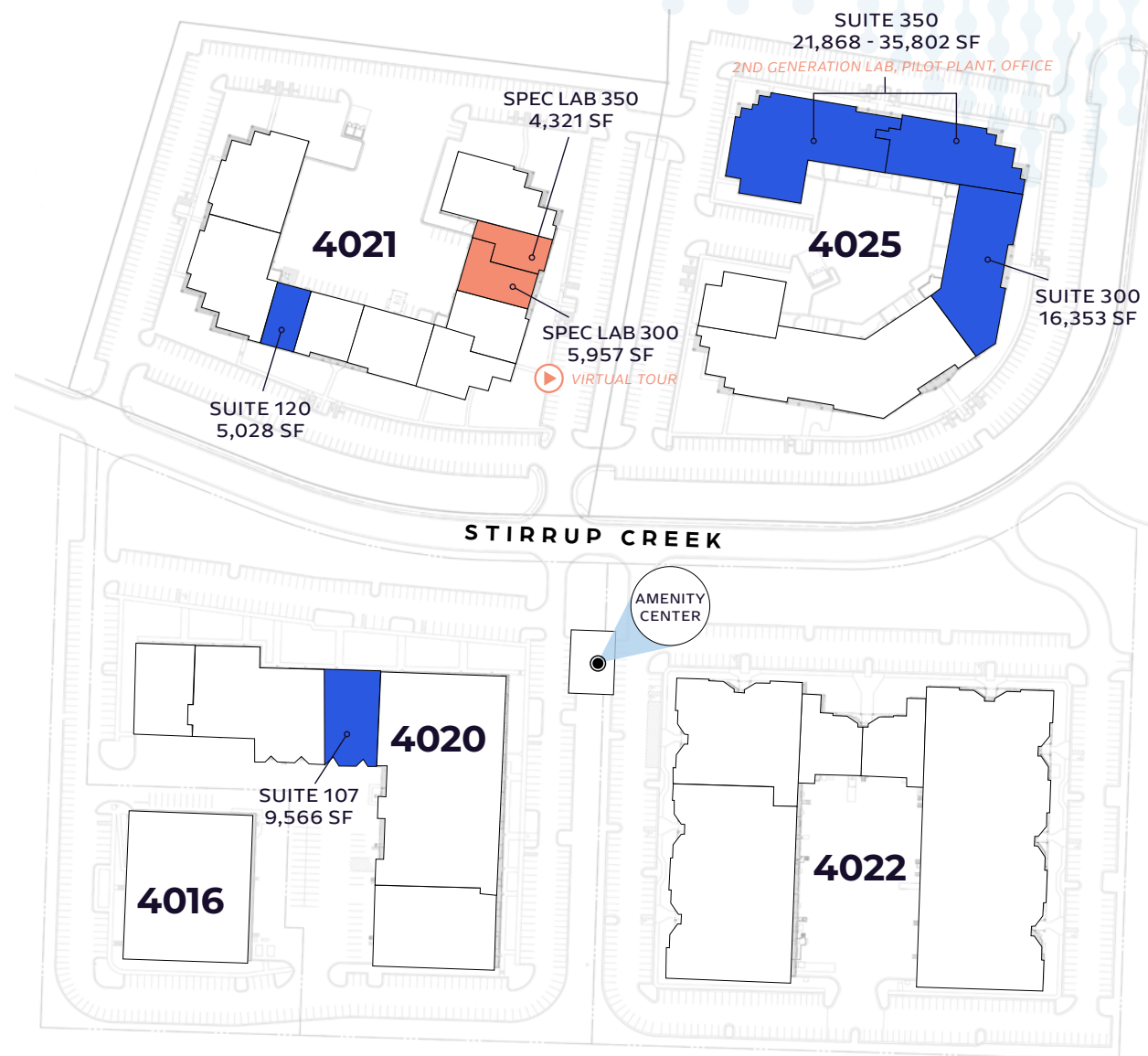
DISCOVER INNOVATION AT EVERY TURN

TBC's world-class campus offers a dynamic environment where ideas thrive and research professionals feel empowered to push the boundaries of life-changing innovation.

With single-story buildings designed for flexibility, tenants can move into life science spec suites that meet their specific needs or design a space from shell to help drive their unique missions forward.

- FIVE (5) SINGLE-STORY BUILDINGS, LOCATED 3 MILES FROM RTP
- 447,000 TOTAL SQUARE FEET
- LAB-READY SUITES
- DOCK ACCESS OR SHARED SCISSOR LIFTS
- CEILING HEIGHTS FROM 16' - 19'
- PARKING AT 3/1,000
- UPGRADED POWER FOR LIFE SCIENCE RESEARCH

[CLICK BUILDING TO VIEW WEBSITE](#)



■ Available Shell/Flex ■ Available Spec Lab

AMENITY CENTER CONNECTING VISIONARIES AND DRIVING BREAKTHROUGHS

Experience a state-of-the-art research hub that goes above and beyond the ordinary to cultivate a sense of belonging, community, and synergy towards a common goal.

With a variety of indoor and outdoor workspaces, lounges and gathering areas designed for collaboration, the TBC amenity center is where forward-thinking individuals come together to make an impact and drive groundbreaking advancements.



- FITNESS CENTER
- MEETING SPACE
- COFFEE LOUNGE
- OUTDOOR GATHERING SPACE
- CONFERENCE/TRAINING ROOM
- CATERING KITCHEN
- FOOD TRUCKS



A WORLD-RENOWNED TALENT HUB

Largest research park in North America

Top state for business in the U.S.

#3 best city to live for tech workers

65,000 local graduates per year

4th highest concentration of

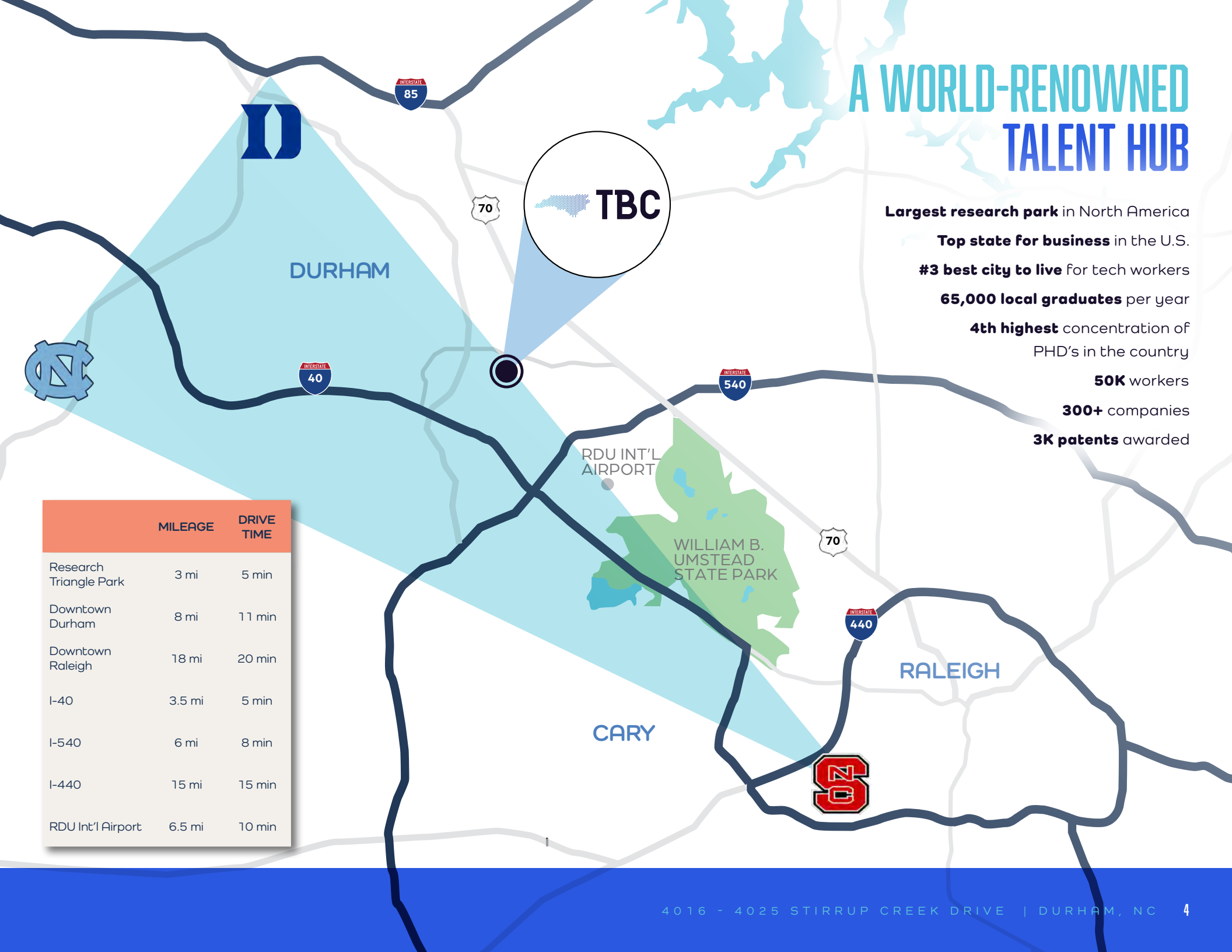
PHD's in the country

50K workers

300+ companies

3K patents awarded

	MILEAGE	DRIVE TIME
Research Triangle Park	3 mi	5 min
Downtown Durham	8 mi	11 min
Downtown Raleigh	18 mi	20 min
I-40	3.5 mi	5 min
I-540	6 mi	8 min
I-440	15 mi	15 min
RDU Int'l Airport	6.5 mi	10 min



A COMMUNITY OF LEADERS

Experience the unbeatable energy of progress in Raleigh-Durham, where you'll find yourself in the company of the nation's top thought-leaders and forward-thinking organizations, renowned for driving industry-changing innovation.



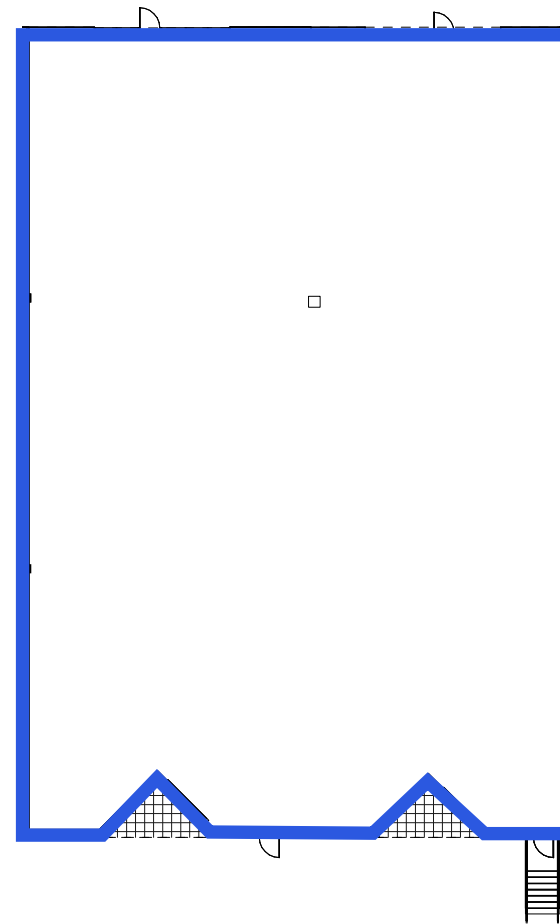
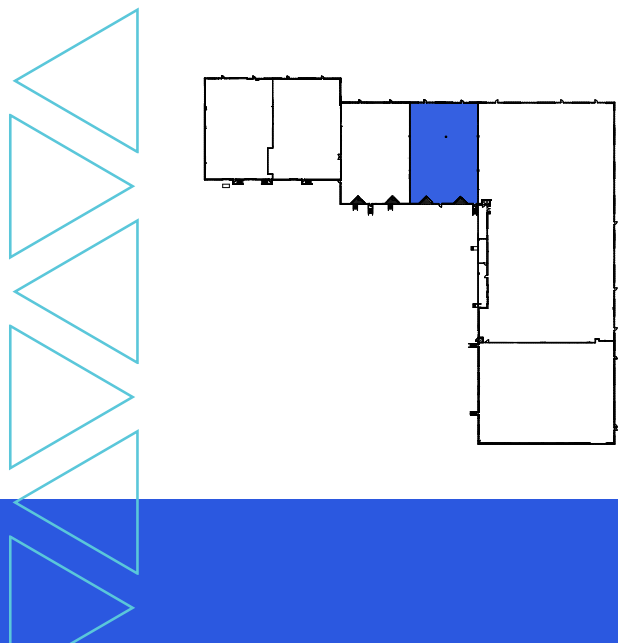
4020 STIRRUP CREEK DR.

[CLICK HERE TO VIEW VIRTUAL TOUR](#)

SHELL/FLEX SUITE 107 | 9,566 SF

SPECIFICATIONS

Building Size	101,959 SF
Clear Height	19'0"
Power	6,000A, 480/277V three phase, four wire
Loading	Dock-high

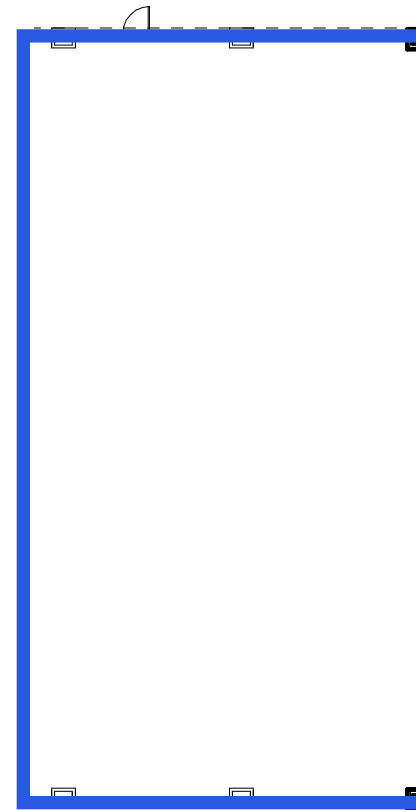
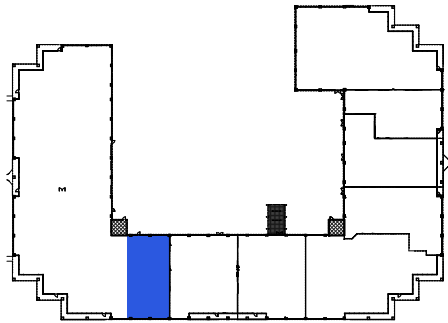


4021 STIRRUP CREEK DR.

SHELL/FLEX SUITE 120 | 5,028 SF

SPECIFICATIONS

Building Size	81,289 SF
Clear Height	16'0"
Power	4,000A, 480/277V three phase, four wire
Loading	One shared dock leveler



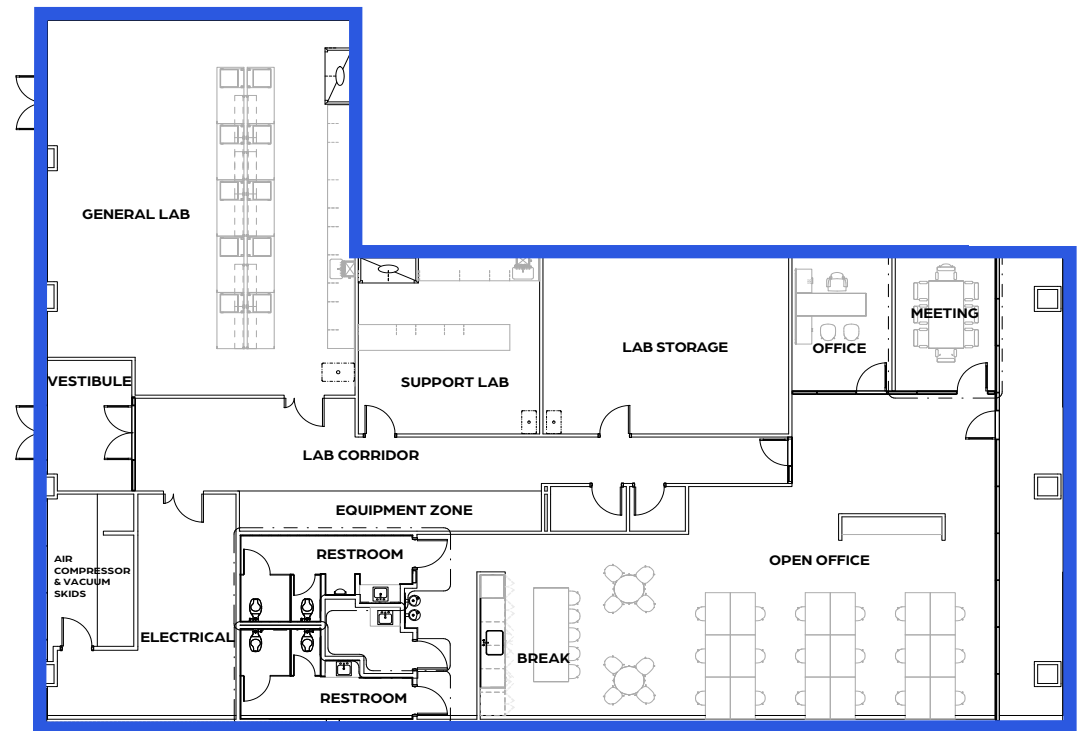
4021 STIRRUP CREEK DR.

[CLICK HERE TO VIEW VIRTUAL TOUR](#)

SPEC LAB 300 | 5,957 SF

SPECIFICATIONS

Building Size	81,289 SF
Clear Height	16'0"
Power	4,000A, 480/277V three phase, four wire
Loading	One shared dock leveler
Generator	50 kW
Lab	Designed to BSL-2 standards



4021 STIRRUP CREEK DR.

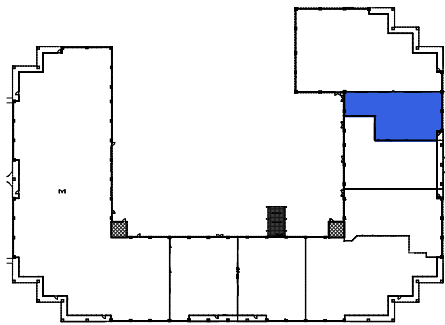
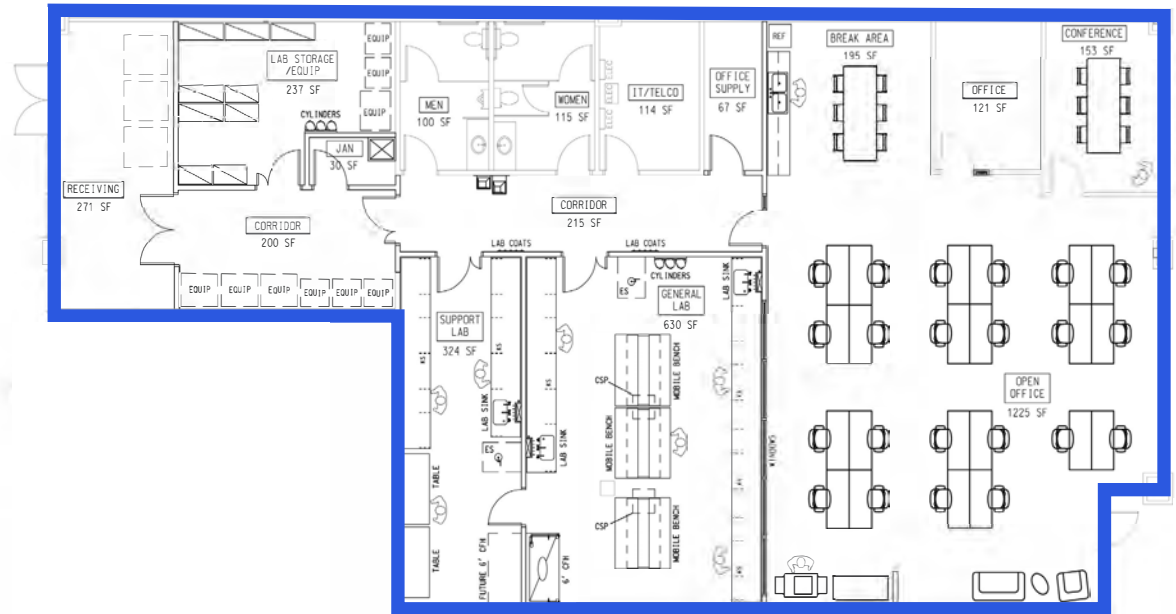
[CLICK HERE TO VIEW PHOTOS](#)

SPEC LAB 350 | 4,321 SF

>>Available 7/1/2026

SPECIFICATIONS

Building Size	81,289 SF
Clear Height	16'0"
Power	4,000A, 480/277V three phase, four wire
Loading	One shared dock leveler
Generator	50 kW
Lab	Designed to BSL-2 standards



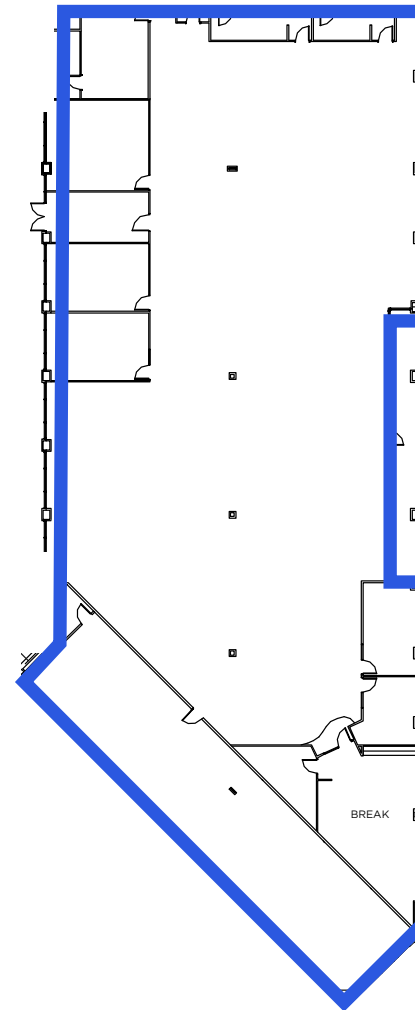
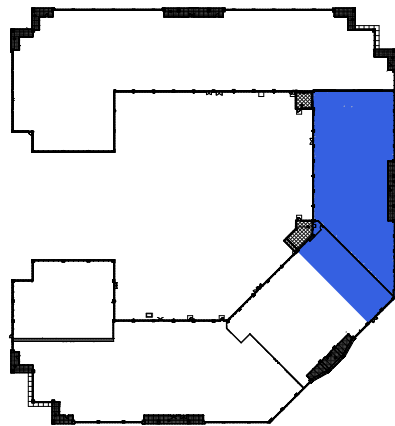
4025 STIRRUP CREEK DR.

[CLICK HERE TO VIEW VIRTUAL TOUR](#)

2ND GEN OFFICE/FLEX SUITE 300 | 16,353 SF

SPECIFICATIONS

Building Size	94,440 SF
Clear Height	16'0"
Power	6,200A, 480/277V three phase, four wire
Loading	One shared dock leveler

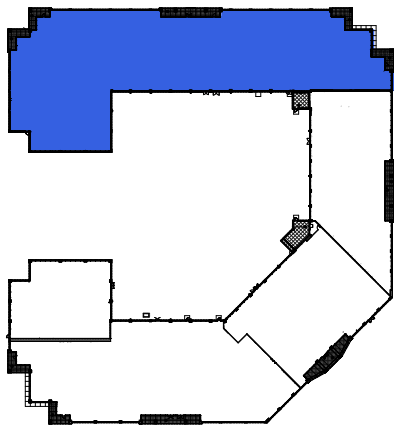
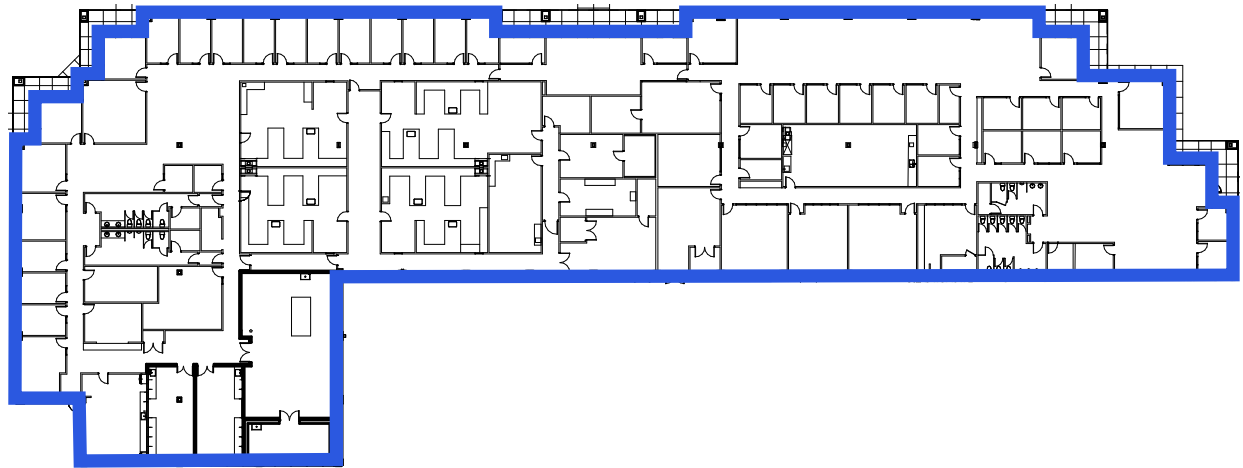


4025 STIRRUP CREEK DR.

2ND GEN LAB, PILOT PLANT, OFFICE SUITE 350 | 13,818 - 35,802 SF

SPECIFICATIONS

Building Size	94,440 SF
Clear Height	16'0"
Power	1,200A, 480/277V three phase, four wire
Loading	One shared dock leveler
Generator	250 kW
Lab	BSL-2 capable

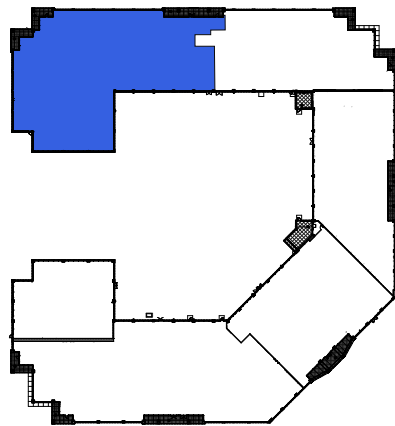
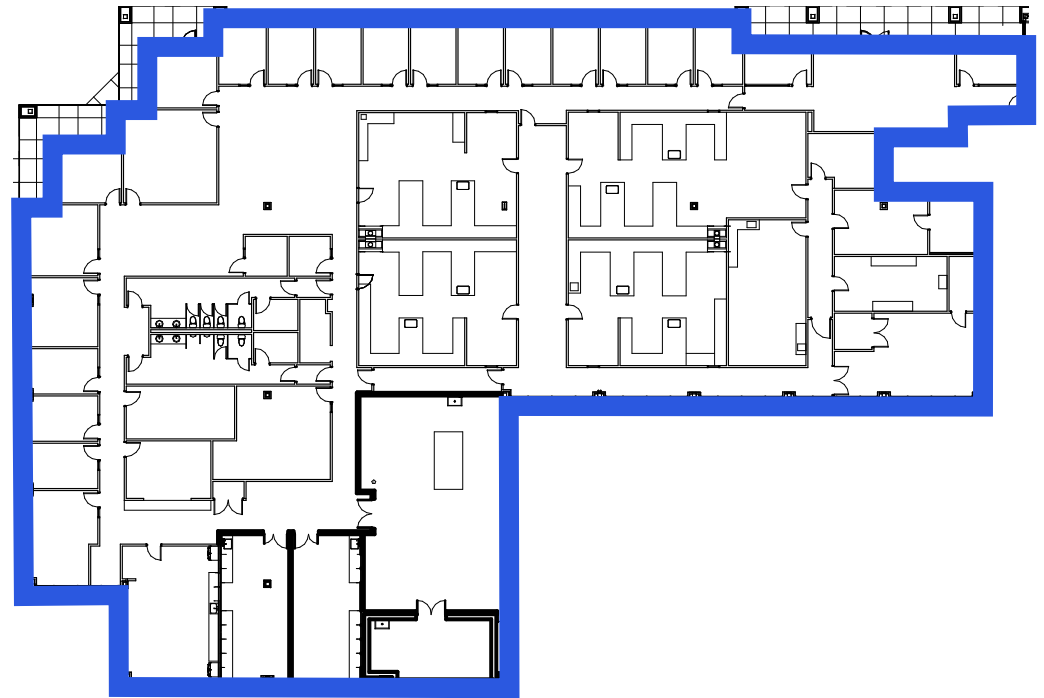


4025 STIRRUP CREEK DR.

2ND GEN LAB, PILOT PLANT, OFFICE
SUITE 350 (SIDE A) | 21,984 SF

SPACE HIGHLIGHTS:

- Accessory H2 Occupancy
- Vacuum, Compressed Air with dryer, DI Water
- Dedicated DOAS unit to Pilot Plant area
- 1 Control Area
- 4 New chemical laboratories with fume hoods, emergency showers sinks and eyewashes
- New wet and dry pilot manufacturing plan rooms with infrastructure provisions for fermenters, water chillers, RODI system, and air dryers
- Dedicated dust collector system for the dry plant
- Epoxy flooring system in new labs
- New break room
- 4 hoods in existing labs
- 2 point of use snorkels
- Glass wash
- Walk in freezer



4016 - 4025 STIRRUP CREEK DRIVE

FOR MORE INFORMATION PLEASE CONTACT

KALER MOSELEY
+1 919 352 9569
kaler.moseley@cushwake.com

DURHAM, NC



©2026 Cushman & Wakefield. All rights reserved. The information contained in this communication is strictly confidential. This information has been obtained from sources believed to be reliable but has not been verified. NO WARRANTY OR REPRESENTATION, EXPRESS OR IMPLIED, IS MADE AS TO THE CONDITION OF THE PROPERTY (OR PROPERTIES) REFERENCED HEREIN OR AS TO THE ACCURACY OR COMPLETENESS OF THE INFORMATION CONTAINED HEREIN, AND SAME IS SUBMITTED SUBJECT TO ERRORS, OMISSIONS, CHANGE OF PRICE, RENTAL OR OTHER CONDITIONS, WITHDRAWAL WITHOUT NOTICE, AND TO ANY SPECIAL LISTING CONDITIONS IMPOSED BY THE PROPERTY OWNER(S). ANY PROJECTIONS, OPINIONS OR ESTIMATES ARE SUBJECT TO UNCERTAINTY AND DO NOT SIGNIFY CURRENT OR FUTURE PROPERTY PERFORMANCE.

