



**COFFEY
CREEK**

INTERNATIONAL BUSINESS PARK

FRANCES CRISLER
+1 704 620 6014
frances.crisler@cushwake.com

FERMIN DEOCA
+1 704 335 4436
fermin.deoca@cushwake.com

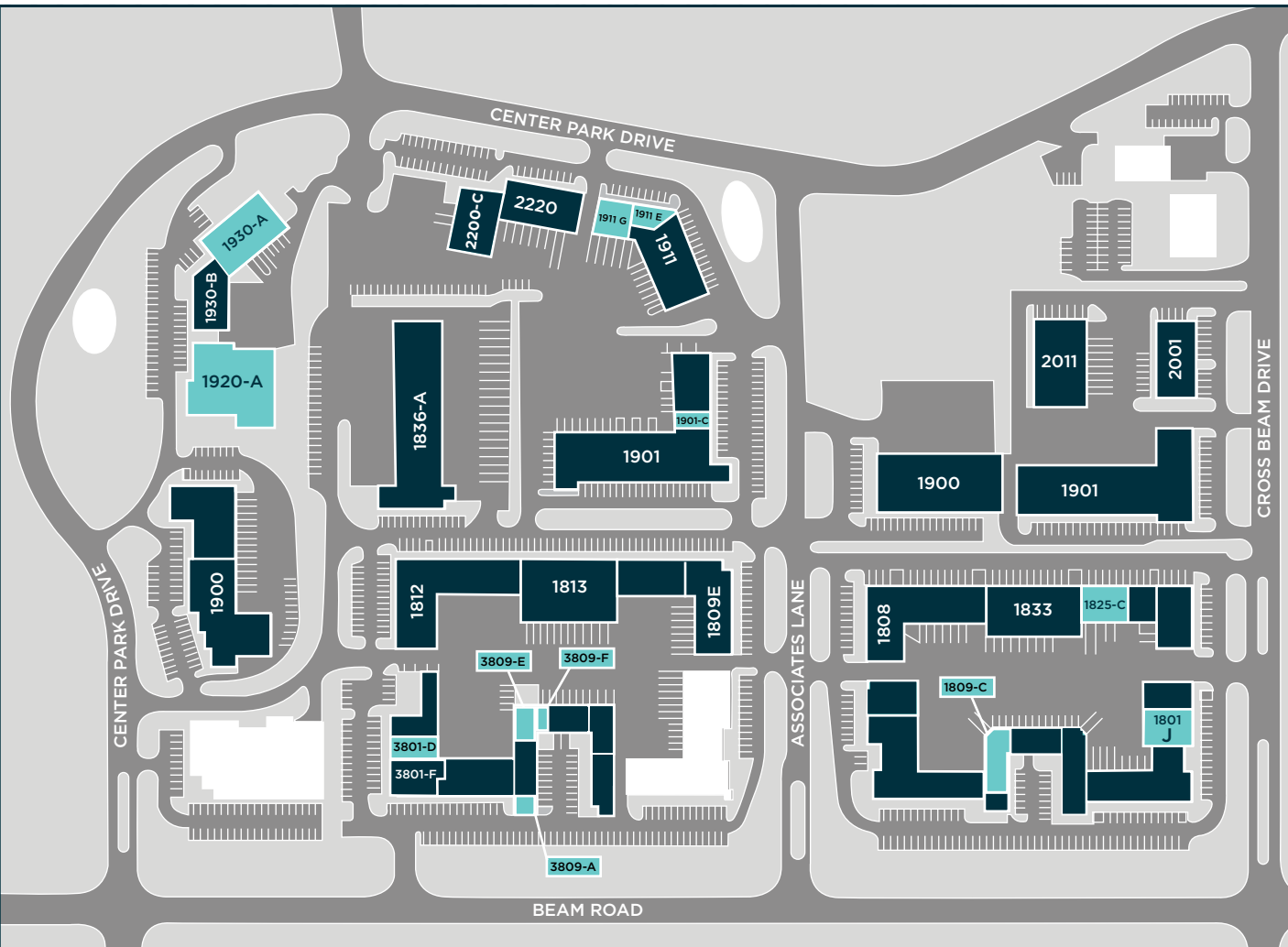
ERIN TURULSKI
+1 704 916 1565
erin.turulski@cushwake.com



SITE PLAN



**COFFEY
CREEK**
INTERNATIONAL BUSINESS PARK



 **1920-A Center Park**
16,900 SF

 **1930-A Center Park**
9,940 SF

 **1801-J Cross Beam**
4,838 SF

 **1809-C Cross Beam**
4,099 SF

 **1911-G Associates**
3,438 SF

 **3809-E Beam Road**
2,590 SF

 **3801-D Beam Road**
2,401 SF

 **3809-A Beam Road**
2,031 SF

 **1911-E Associates**
1,960 SF

 **1901-C Associates**
1,282 SF

 **3809-F Beam Road**
1,256 SF



1920-A Center Park



**COFFEY
CREEK**
INTERNATIONAL BUSINESS PARK

16,900 SF



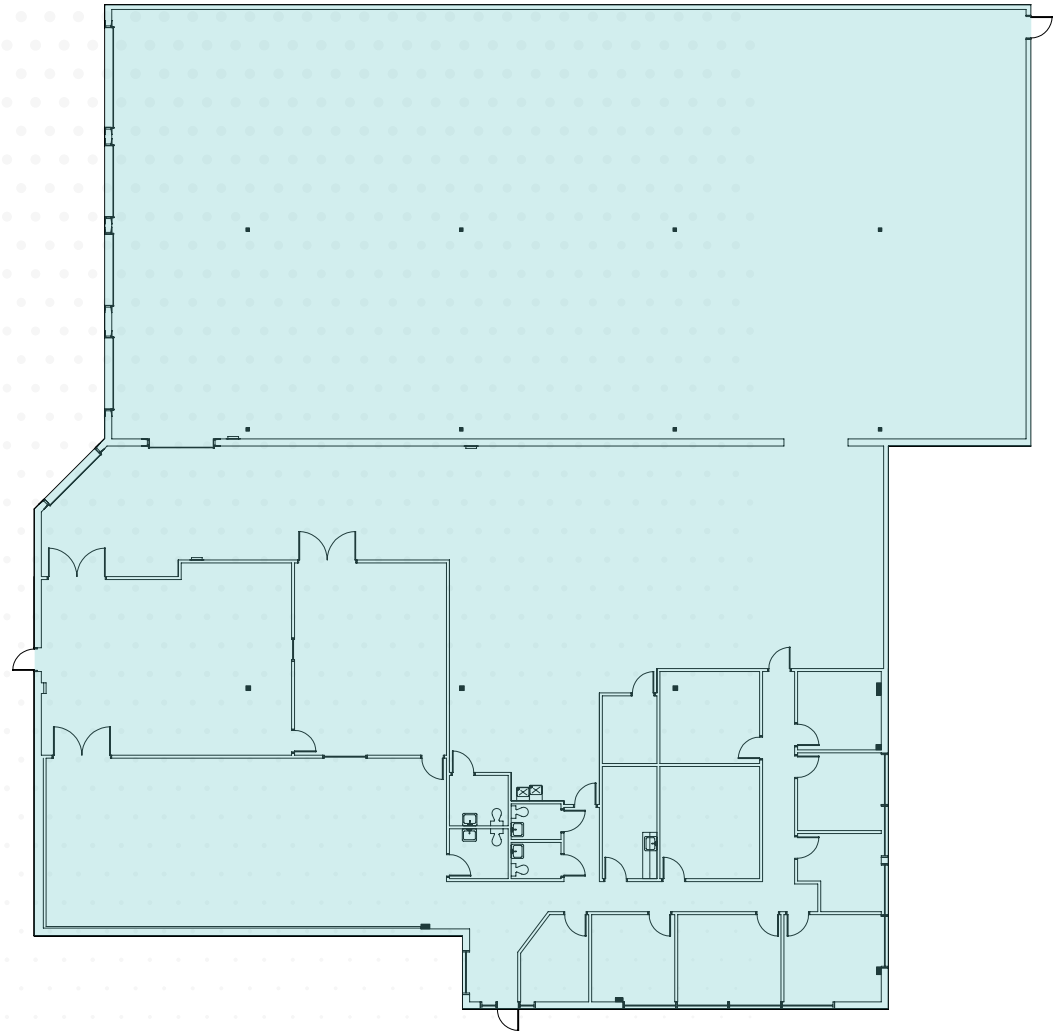
5,396 SF OFFICE SPACE



4 DOCK HIGH DOORS



1 DRIVE-IN DOOR



[Back to Site Plan](#)

1801-J Cross Beam



**COFFEY
CREEK**
INTERNATIONAL BUSINESS PARK

4,838 SF



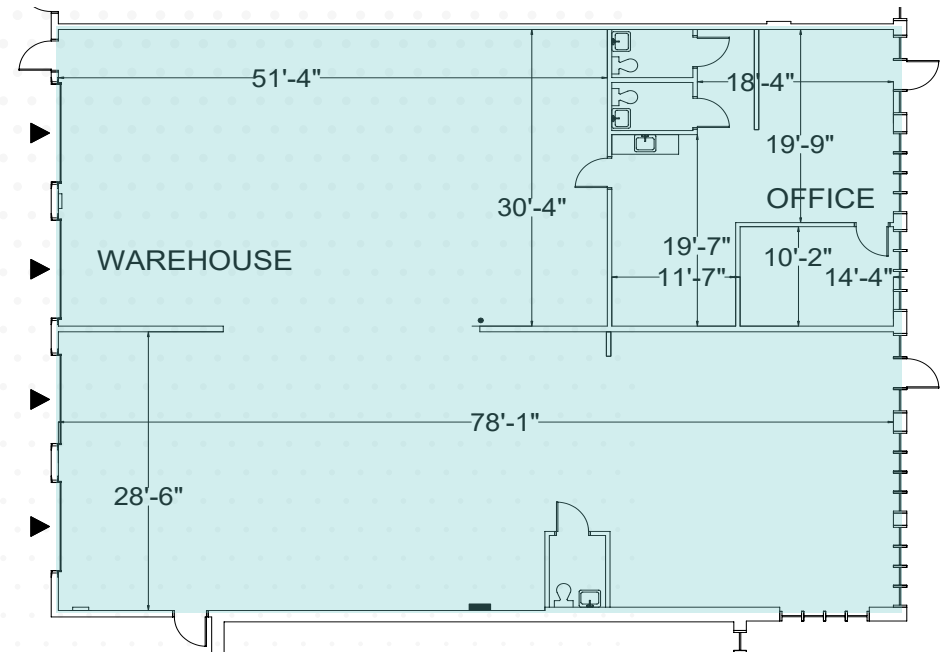
859 SF Office



4 DOCK HIGH DOORS



12'-14' CLEAR HEIGHT



[Back to Site Plan](#)

1825-C Cross Beam



**COFFEY
CREEK**
INTERNATIONAL BUSINESS PARK

MAKE-READY

4,709 SF



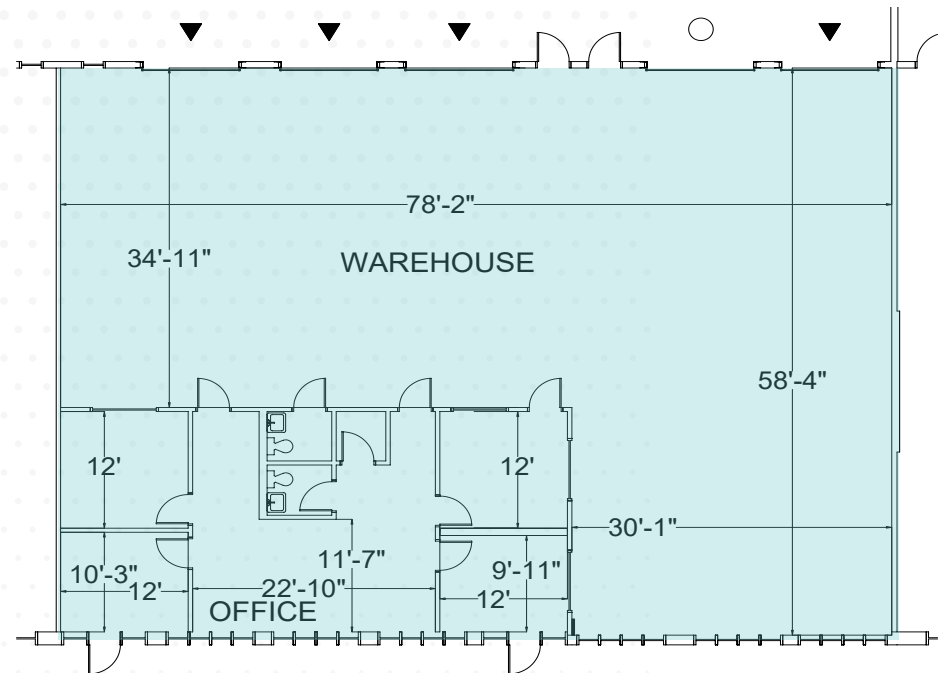
1,168 SF OFFICE SPACE



4 DOCK HIGH DOORS



1 DRIVE-IN DOOR



1809-C Cross Beam



**COFFEY
CREEK**
INTERNATIONAL BUSINESS PARK

4,099 SF



±2,969 SF OFFICE SPACE



12'-14' CLEAR HEIGHT



1 DOCK HIGH DOOR

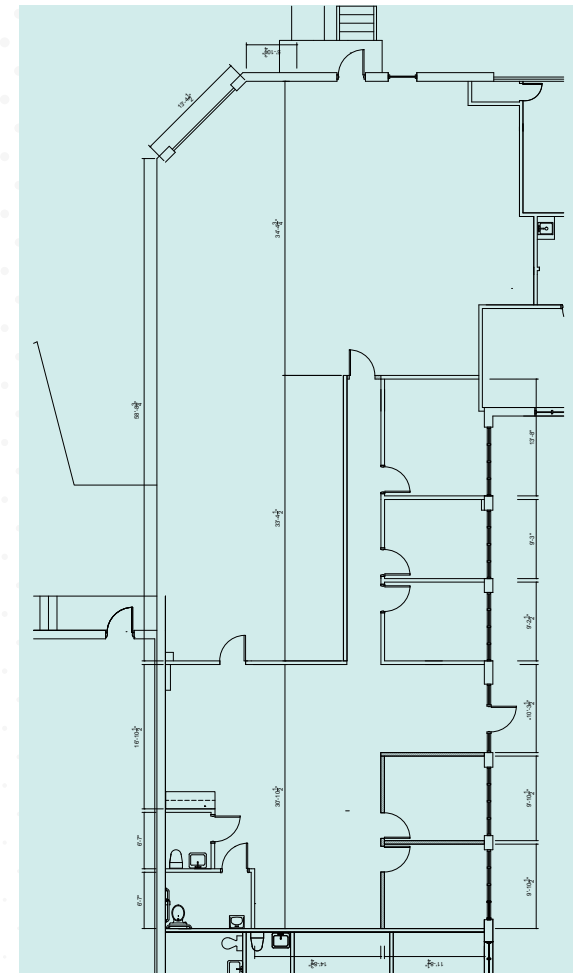


1 DRIVE-IN DOOR



MAKE-READY IN PROGRESS
Office SF: 1,958
Warehouse SF: 2,141

MAKE-READY



1911-G Associates



**COFFEY
CREEK**
INTERNATIONAL BUSINESS PARK

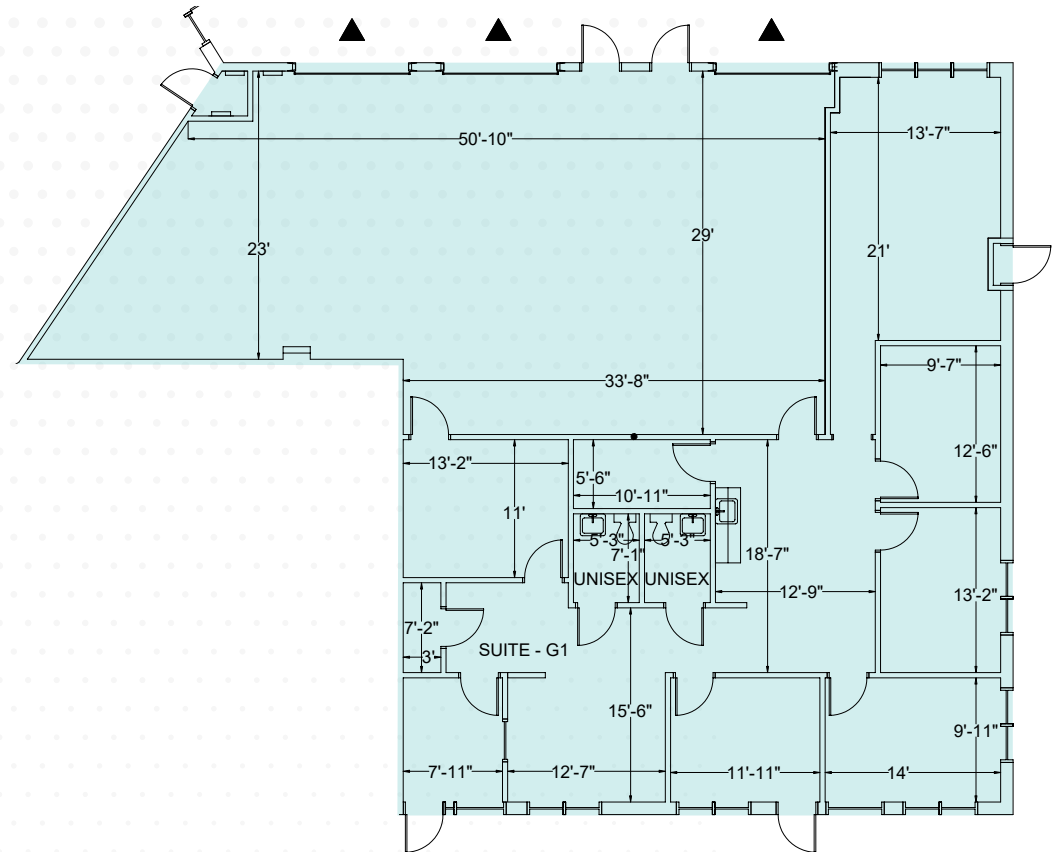
3,438 SF



1,904 SF OFFICE



3 DOCK HIGH DOORS



[Back to Site Plan](#)

3809-E Beam Road



**COFFEY
CREEK**
INTERNATIONAL BUSINESS PARK

2,590 SF



1,052 SF OFFICE SPACE



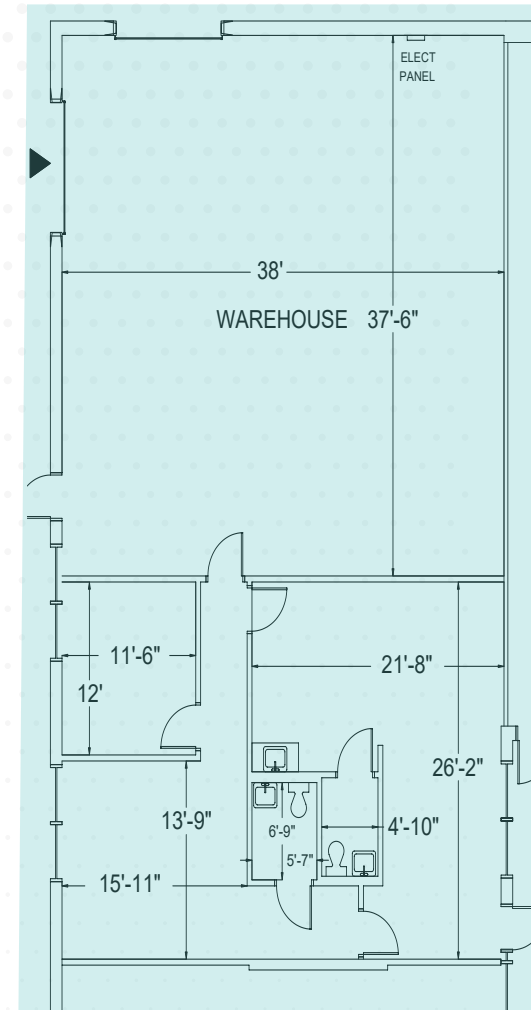
1 DRIVE-IN DOOR



1 DOCK HIGH DOOR



12'-14' CLEAR HEIGHT



[Back to Site Plan](#)

3801-D Beam Road



**COFFEY
CREEK**
INTERNATIONAL BUSINESS PARK

2,401 SF



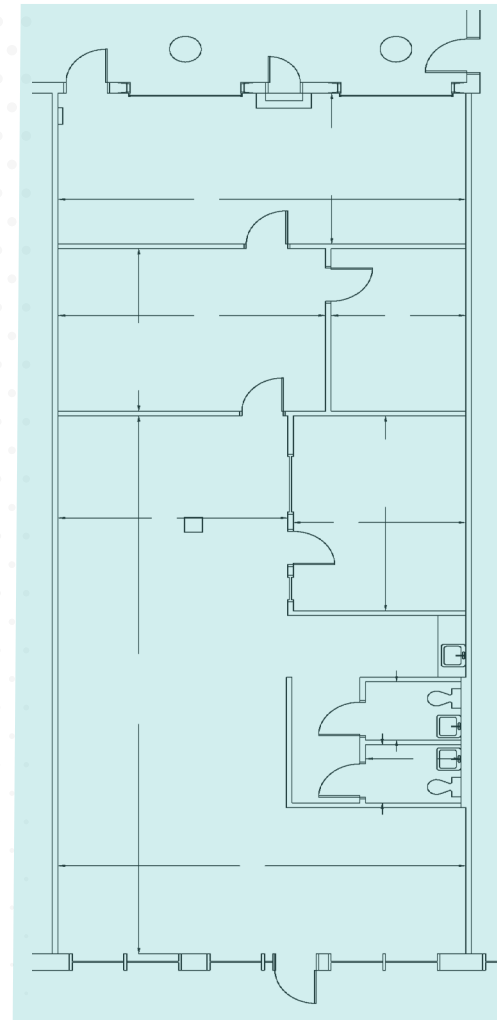
1,957 SF OFFICE SPACE



12'-14' CLEAR HEIGHT



2 DOCK HIGH DOORS



3809-A Beam Road



**COFFEY
CREEK**
INTERNATIONAL BUSINESS PARK

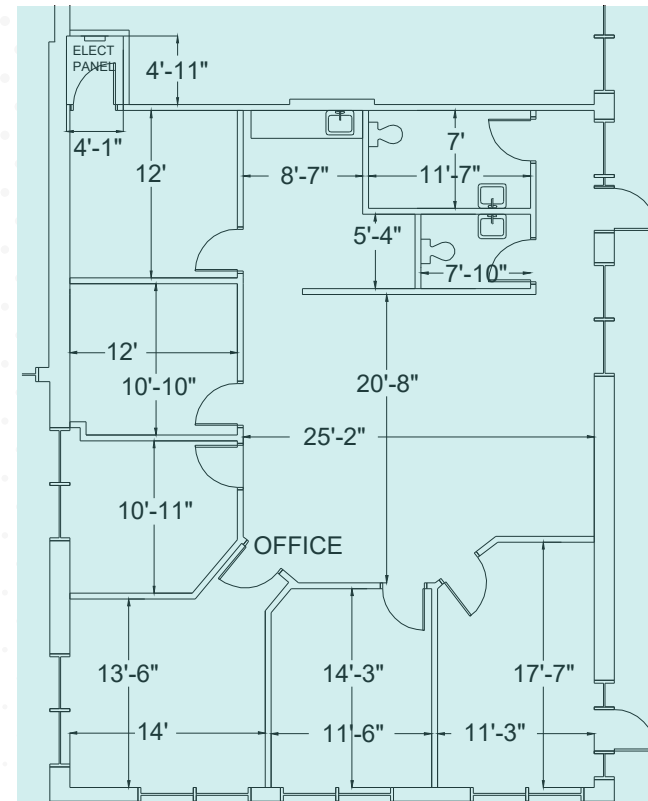
2,031 SF



2,031 SF OFFICE SPACE



AVAILABLE ON: **11/1/2026**



[Back to Site Plan](#)

1911-E Associates

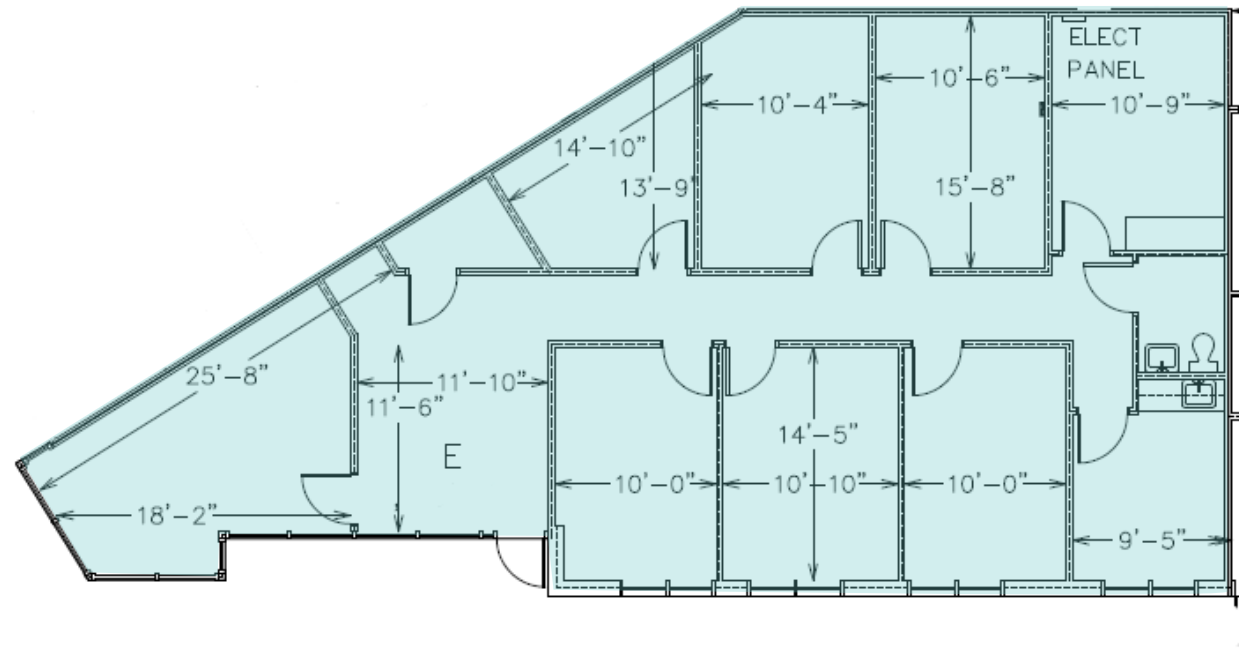


**COFFEY
CREEK**
INTERNATIONAL BUSINESS PARK

1,960 SF



±1,960 SF OFFICE



[Back to Site Plan](#)

1901-C Associates



**COFFEY
CREEK**
INTERNATIONAL BUSINESS PARK

1,282 SF



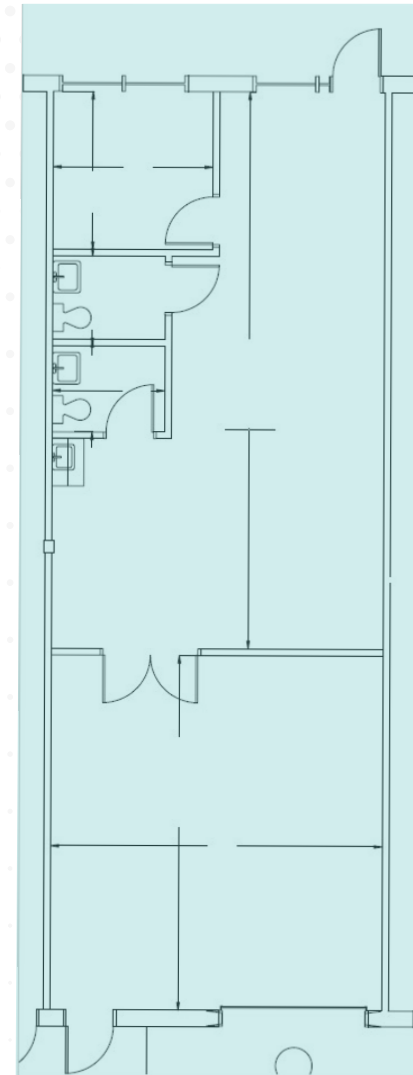
777 SF Office



12-14' CLEAR HEIGHT



1 DOCK HIGH DOOR



3809-F Beam Road



**COFFEY
CREEK**
INTERNATIONAL BUSINESS PARK

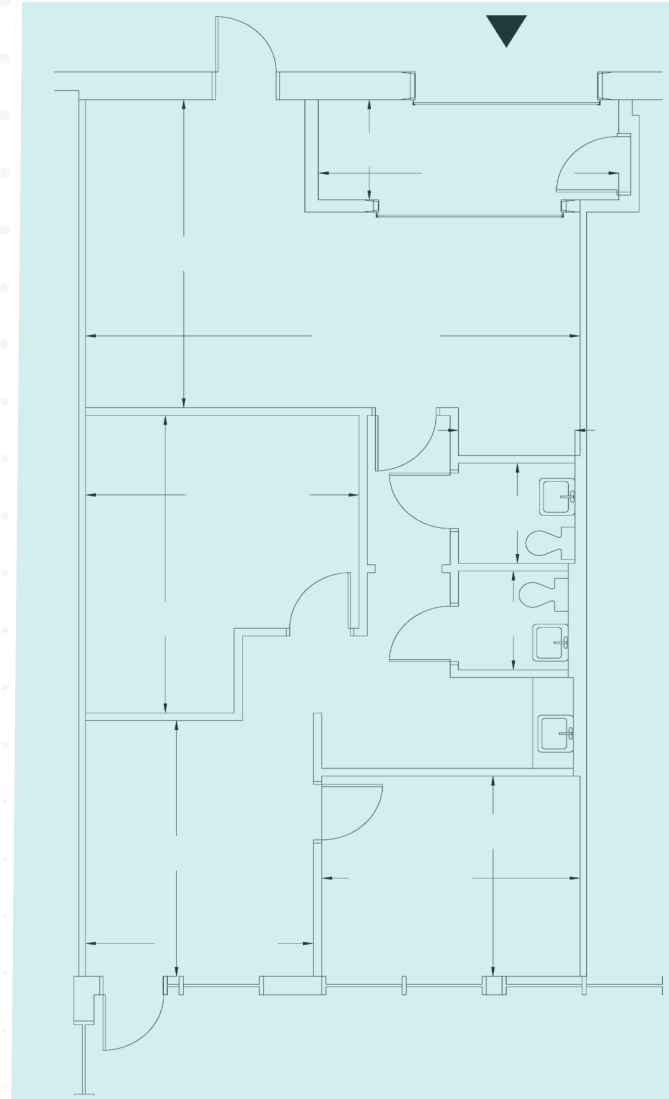
1,256 SF



761 SF Office



1 DOCK HIGH DOOR



[Back to Site Plan](#)

ACCESS



**COFFEY
CREEK**
INTERNATIONAL BUSINESS PARK

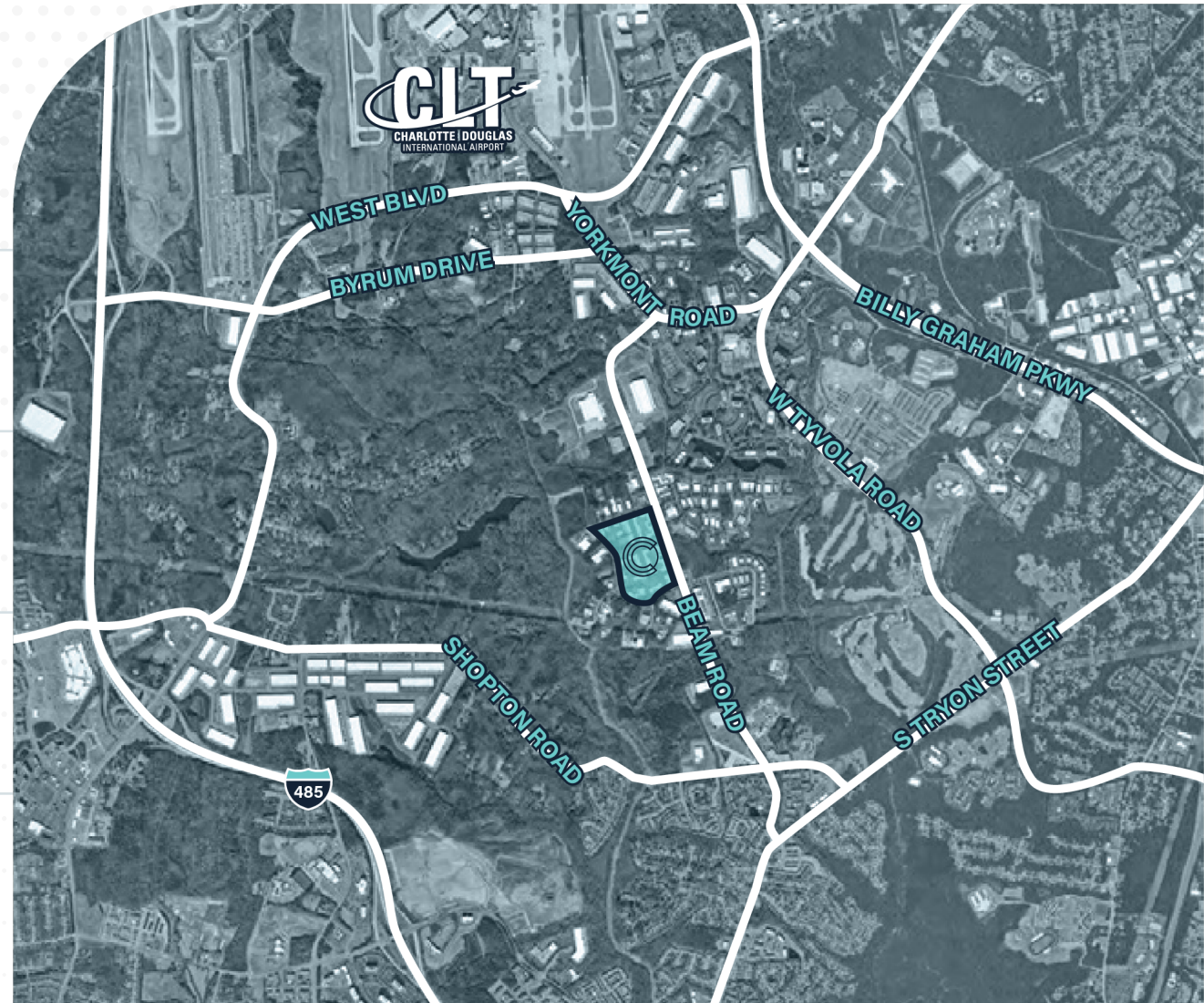
BEAM ROAD
Adjacent

SHOPTON ROAD
1.0 Mile

S TRYON STREET
1.4 Miles

W TYVOLA ROAD
2.2 Miles

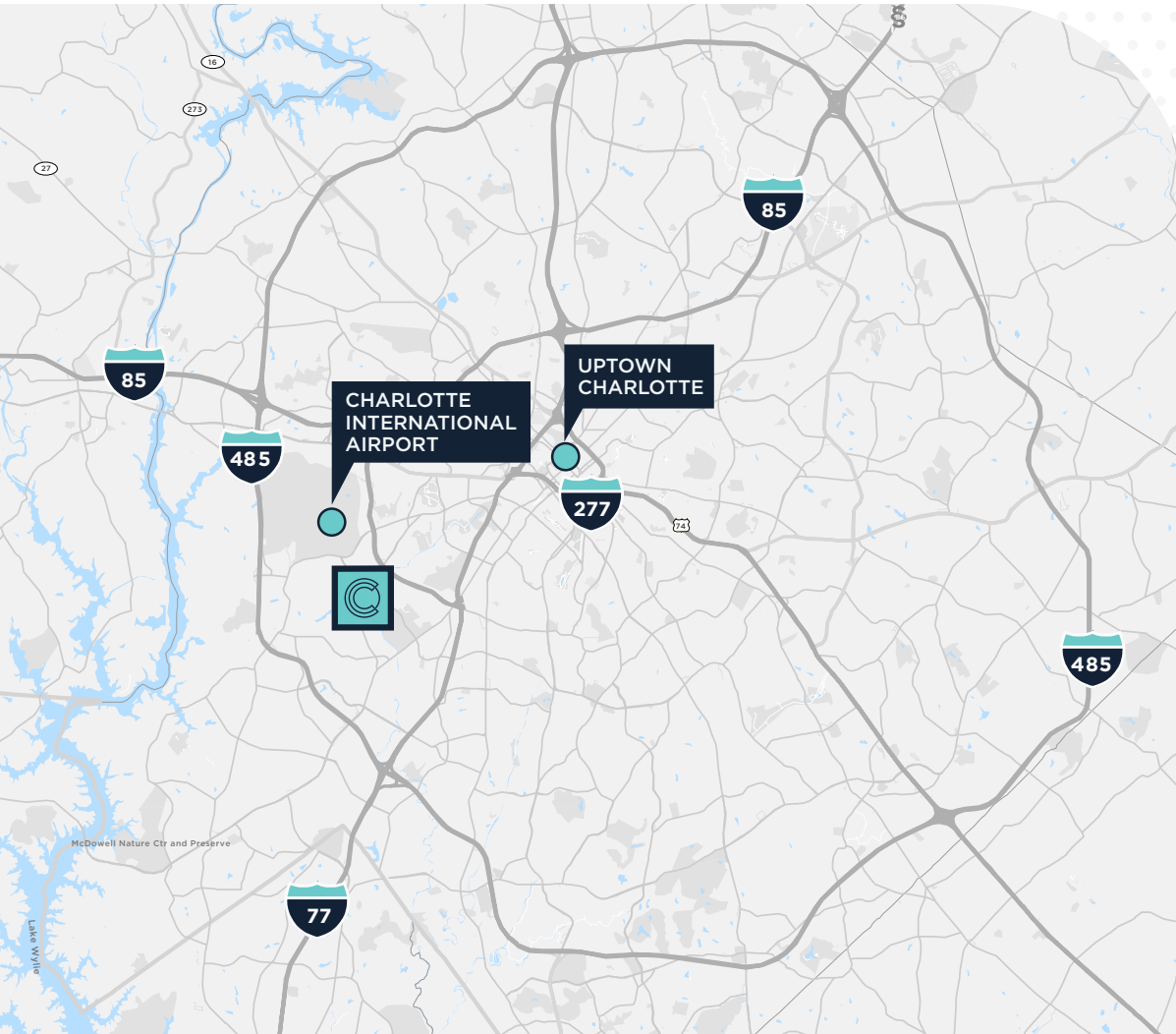
I-485
2.6 Miles



DRIVE TIMES



**COFFEY
CREEK**
INTERNATIONAL BUSINESS PARK



I-485
6 min/2.6 miles

I-77
7 min/3.6 miles

I-85
8 min/5.1 miles

I-277
11 min/7.0 miles

CHARLOTTE INT'L AIRPORT
8 min/5.2 miles

UPTOWN CHARLOTTE
13 min/7.9 miles



COFFEY CREEK

INTERNATIONAL BUSINESS PARK

Beam Road | Charlotte, NC

For More Information, Please Contact:

FRANCES CRISLER

+1 704 620 6014

frances.crisler@cushwake.com

FERMIN DEOCA

+1 704 335 4436

fermin.deoca@cushwake.com

ERIN TURULSKI

+1 704 916 1565

erin.turulski@cushwake.com

©2026 Cushman & Wakefield. All rights reserved. The information contained in this communication is strictly confidential. This information has been obtained from sources believed to be reliable but has not been verified. NO WARRANTY OR REPRESENTATION, EXPRESS OR IMPLIED, IS MADE AS TO THE CONDITION OF THE PROPERTY (OR PROPERTIES) REFERENCED HEREIN OR AS TO THE ACCURACY OR COMPLETENESS OF THE INFORMATION CONTAINED HEREIN, AND SAME IS SUBMITTED SUBJECT TO ERRORS, OMISSIONS, CHANGE OF PRICE, RENTAL OR OTHER CONDITIONS, WITHDRAWAL WITHOUT NOTICE, AND TO ANY SPECIAL LISTING CONDITIONS IMPOSED BY THE PROPERTY OWNER(S). ANY PROJECTIONS, OPINIONS OR ESTIMATES ARE SUBJECT TO UNCERTAINTY AND DO NOT SIGNIFY CURRENT OR FUTURE PROPERTY PERFORMANCE. PD-21511-V40

