



FOR SUBLEASE

Turner Logistics Center

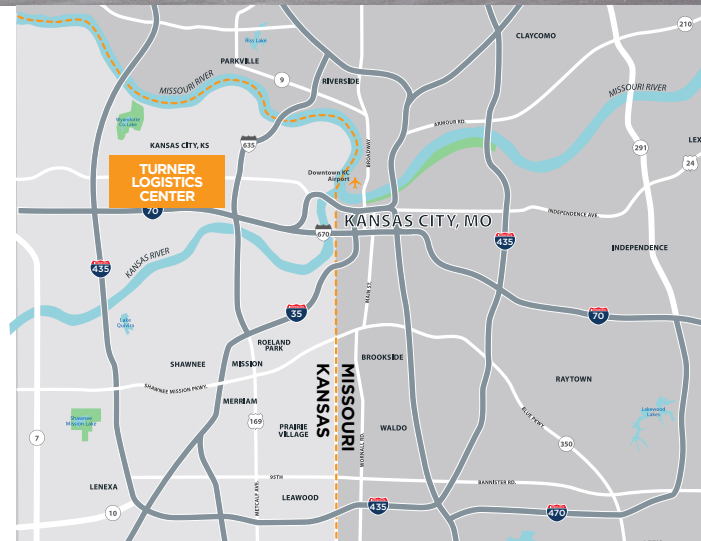
Building IV | 905 N 69th Street, Kansas City, KS



±57,642 SF Sublease Available
Lease Rate: \$8.00 PSF NNN

Property Highlights

- Available June 1, 2026
- Class A space - 2022 Construction
- 8 dock-high doors and 1 drive-in door (14' x 16')
- 1,950 SF office area
- Racking available
- 11 trailer parking spots (off building)
- Lease expiration date: May 15, 2028



Joseph S. Accurso
Vice Chairman
+1 816 412 0216
joe.accurso@cushwake.com

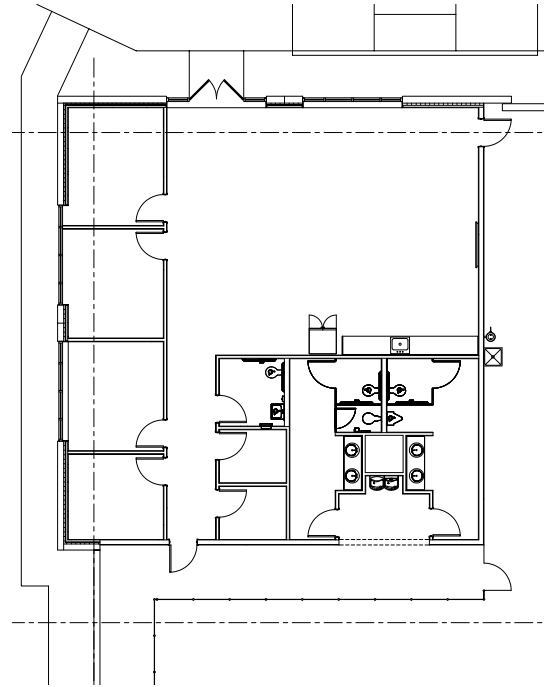
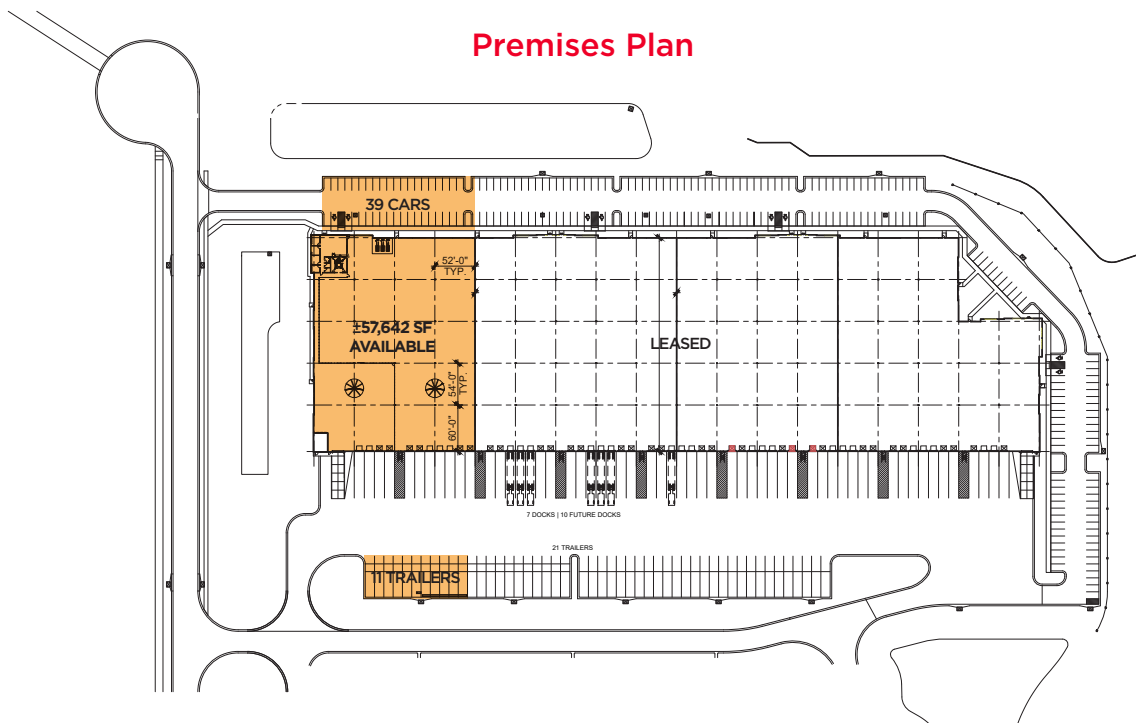
Jack Goldsborough, CCIM
Director
+1 816 412 0326
jack.goldsborough@cushwake.com

Rachael Kirane
Senior Associate
+1 816 412 0234
rachael.kirane@cushwake.com

4600 Madison Avenue
Suite 800
Kansas City, MO 64112
Main +1 816 221 2200
cushmanwakefield.com

Building Features

Space Available:	±57,642 SF
Space Dimensions:	276' X 208'
Office Area:	1,950 SF
Column Spacing:	54' X 52' Columns 60' X 52' Speed Bays
Clear Height:	36'
Dock-High Doors:	8 (expandable to 11)
Drive-In Doors:	1 (14' x 16')
Trailer Parking:	11 Spaces
Auto Parking:	39 Spaces
Fire Protection:	ESFR - K-17 K-22
Lighting:	LED, 30 FC in Warehouse

Office Area

Premises Plan


Joseph S. Accurso
Vice Chairman
+1 816 412 0216
joe.accurso@cushwake.com

Jack Goldsborough, CCIM
Director
+1 816 412 0326
jack.goldsborough@cushwake.com

Rachael Kirane
Senior Associate
+1 816 412 0234
rachael.kirane@cushwake.com

4600 Madison Avenue
Suite 800
Kansas City, MO 64112
Main +1 816 221 2200
cushmanwakefield.com

Turner Logistics Center

Building IV | 905 N 69th Street, Kansas City, KS

