



*Where Your Business Can Soar*

# AIRPARK EAST

Greensboro, NC 27409

**DEEP RIVER**  
PARTNERS

 **CUSHMAN &  
WAKEFIELD**



## Welcome to Airpark East, where your business can soar.

Our Class A office park in Greensboro offers unparalleled accessibility and convenience, located just minutes away from the Piedmont Triad International Airport and with quick access to major highways.

Our office park features four state-of-the-art buildings, each designed to meet the highest standards of excellence in modern office space. With a total of 300,000 square feet of space and flexible floor plans, Airpark East provides the perfect environment for your growing business. Shared conference spaces, high-speed internet connectivity, and a range of amenities are available to enhance productivity and comfort for your team.

We understand the importance of a healthy workplace environment and have invested in a range of on-site amenities to support your team's physical and mental well-being. Our fully equipped fitness center offers the latest cardio and weightlifting equipment, while the outdoor walking trail provides a scenic spot for a lunchtime stroll or mid-day break. Take a break and enjoy the relaxing outdoor seating areas overlooking the pond or grab a delicious bite at our on-site café.

At Airpark East, we're dedicated to creating an environment that supports your team's physical and mental health. Come experience the difference in our office park that takes a healthier work-life balance to new heights.



*Take 5 Café – 7025 Albert Pick Road*

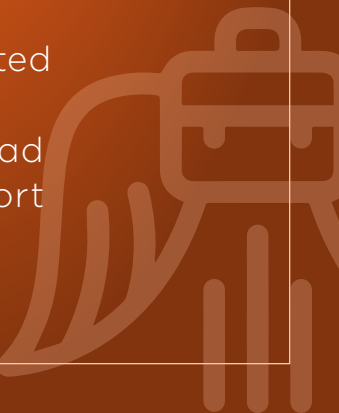


*Spark Conference Center – 7025 Albert Pick Road*



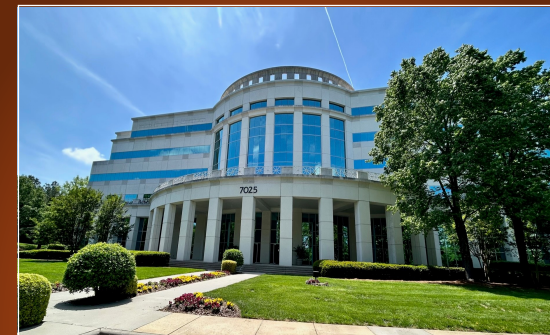
## Property Highlights

- Four Class A office buildings, providing flexibility for companies of all sizes
- On-site amenities including shared conference rooms, café, fitness center, walking trail, amphitheater and wooded picnic area
- Immediate access to I-40, Highway 68, I-840
- Adjacent to restaurants, shopping, banks and lodging
- Conveniently located just minutes away from Piedmont Triad International Airport





# Airpark East



**7025 ALBERT PICK ROAD**

Total Size: 133,239 SF  
 Year Built: 1990  
 Floors: 6  
 Telecom/Fiber: Spectrum, AT&T



**7027 ALBERT PICK ROAD**

Total Size: 55,529 SF  
 Year Built: 1997  
 Floors: 3  
 Telecom/Fiber: Spectrum, AT&T



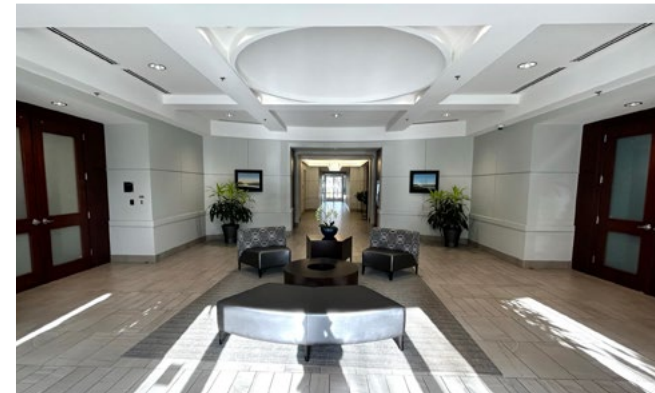
**7029 ALBERT PICK ROAD**

Total Size: 55,638 SF  
 Year Built: 1988 (Renovated 2014)  
 Floors: 6  
 Telecom/Fiber: Spectrum, AT&T



**7031 ALBERT PICK ROAD**

Total Size: 55,881 SF  
 Year Built: 1986 (Renovated 2015)  
 Floors: 3  
 Telecom/Fiber: Spectrum, AT&T





WITHIN A 10-MINUTE DRIVE TIME:



195

Dining / Bar / Pub



44

Hotels / Lodging



594

Retail / Trade

WITHIN A 1-MILE RADIUS:



729

Total Daytime Population



230

Establishments

# Prime Location

Easy Access to Area Amenities



## RESTAURANTS

- a. Ruby Tuesday
- b. Dunkin' Donuts
- c. Duck Donuts
- d. McDonald's
- e. Wendy's
- f. Bojangles
- g. Arby's
- h. Subway
- i. Taco Bell
- j. Fire & Sticks Japanese Steakhouse
- k. City Barbeque
- l. Chophouse Steakhouse
- m. McAlister's Deli
- n. Starbucks
- o. Olive Garden
- p. Penn Station East Coast Subs
- q. Applebees
- r. Carolina's Diner
- s. Waffle House
- t. Kickback Jack's

## HOTELS

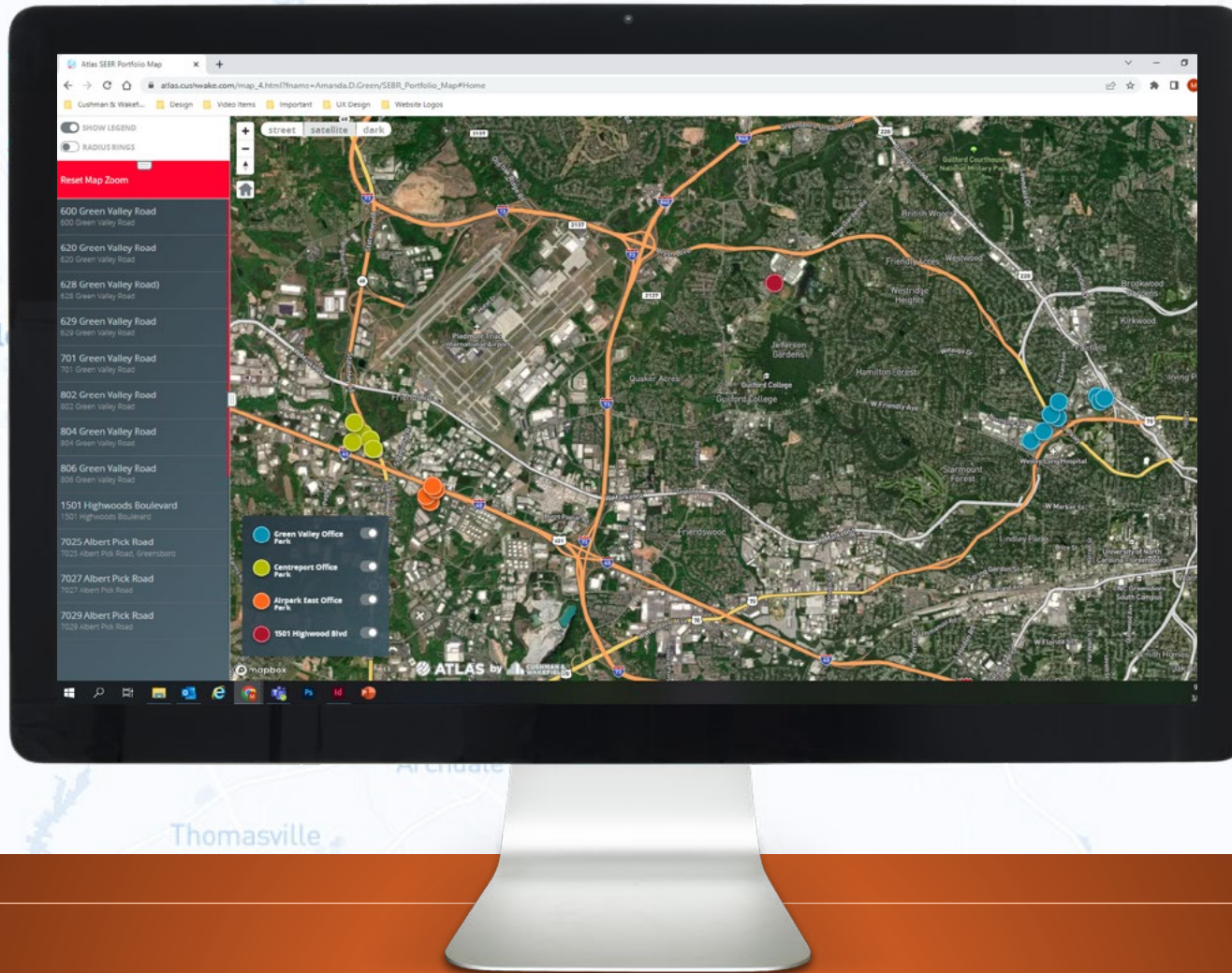
- a. Embassy Suites by Hilton
- b. Homewood Suites
- c. LaQuinta Inn & Suites by Wyndham
- d. Hampton Inn
- e. Hilton Garden Inn Greensboro Airport
- f. Courtyard by Marriott
- g. Wingate by Wyndham
- h. Four Points by Sheraton
- i. Fairfield by Marriott
- j. Holiday Inn Express
- k. Home 2 Suites by Hilton
- l. Residence Inn

## KEY DISTANCES

Location	Time	Distance
CBD Greensboro	16 minutes	12 miles
CBD Winston-Salem	23 minutes	18 miles
CBD High Point:	22 minutes	10 miles



CLICK BELOW FOR THE INTERACTIVE ATLAS MAP WITH LINKS TO AVAILABILITY



For more information, please contact:

**KEVIN KEMP, SIOR**

Managing Director

+1 336 812 3307

kevin.kemp@cushwake.com

**RAFFI SIMEL, SIOR**

Director

+1 336 289 2541

raffi.simel@cushwake.com

