

# AIRPARK EAST BUSINESS PARK

GREENSBORO

408, 410 & 412 Gallimore Dairy Rd  
Greensboro, NC 27410



FOR LEASE

±10,500 - 25,200 SF



LEASED BY





## 408 GALLIMORE DAIRY ROAD - SUITE C

**Available SF:** 25,200 SF

**Office SF:** 3,742 SF

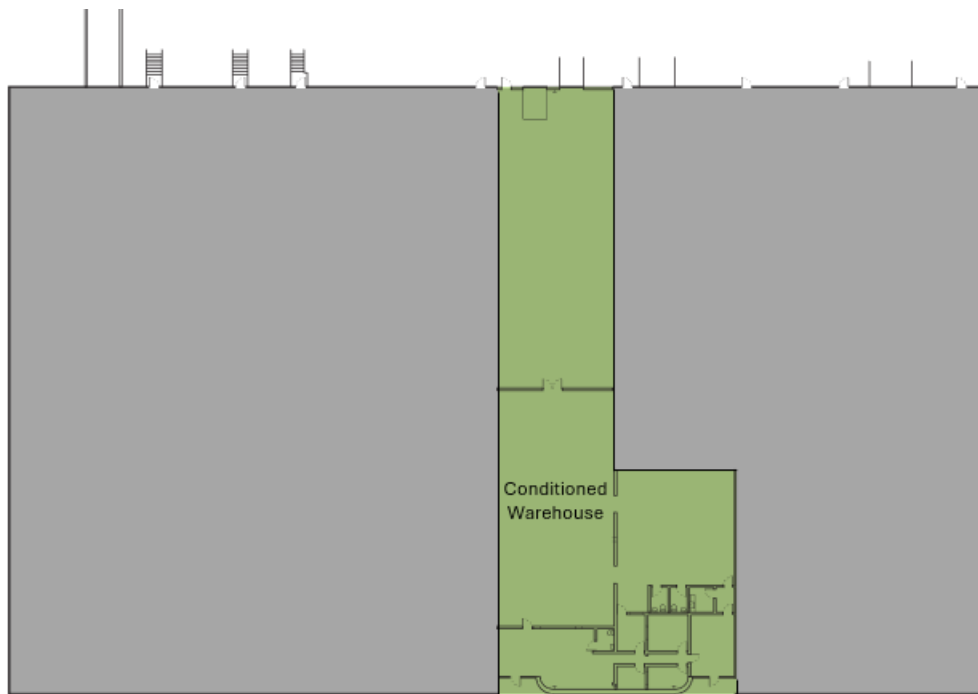
**Clear Height:** 21'

**Column Spacing:** 40' x 50'

**Lighting:** LED

**Sprinkler:** Wet System

**Dock Doors:** Six (6) 8' x 10'  
Two (2) W/ Pit Leveler,  
Three (3) W/Edge of Dock  
One (1) Knock-Out Panel



## 410 GALLIMORE DAIRY ROAD - SUITE D

**Available SF:** 10,500 SF

**Office SF:** 1,575 SF

**Clear Height:** 21'

**Column Spacing:** 40' x 50'

**Lighting:** LED

**Sprinkler:** Wet System

**Dock Doors:** One (1) 8' x 10' W/Pit Leveler

**Drive-Up Ramp:** One (1) 10' x 10'





# CONTACT INFORMATION

408, 410 & 412 Gallimore Dairy Rd  
Greensboro, NC 27410

**Ryan Conboy, SIOR**

ryan.conboy@cushwake.com

(336) 821-3832

**Bobby Finch**

bobby.finch@cushwake.com

(336) 812-3303

This document is for informational purposes only and does not constitute an offer or acceptance of a lease. Any lease agreement must be in writing and signed by the landlord. No representations or warranties are made except as expressly stated in a signed lease. Information is provided "as is" and may be subject to errors or change without notice.



LEASED BY

