

2424 4 STREET SW
CALGARY, AB



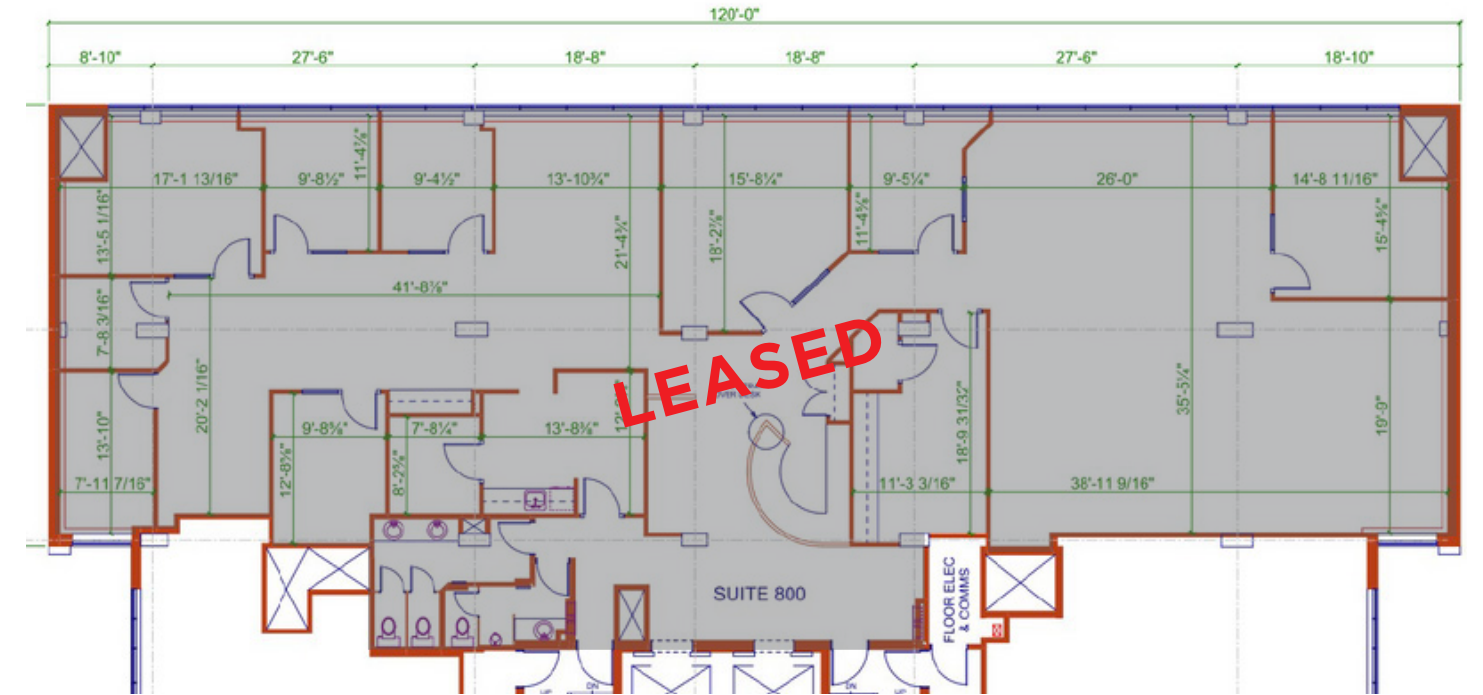
PETWIN SQUARE



OFFICE SPACE FOR LEASE



4,852 SF
Suite 800



Property Highlights

Located in the heart of Calgary's Mission district, 2424 4 Street SW offers office space in a highly accessible and amenity-rich inner-city location. Easily accessible from downtown Calgary and major roadways, this property is well connected by public transit and situated within one of the city's most vibrant and established communities.

Available Space	Suite 800: 4,852 sf LEASED Suite 1010: 3,040 sf	<ul style="list-style-type: none"> • On-site property management • Surrounded by numerous restaurants, cafés, and services along 4 Street SW • Underground parking available
Operating Costs	\$21.60 psf (est. 2026)	
Availability	June 1, 2026	
Parking	Underground - 1:500 sf, \$250/month/stall	

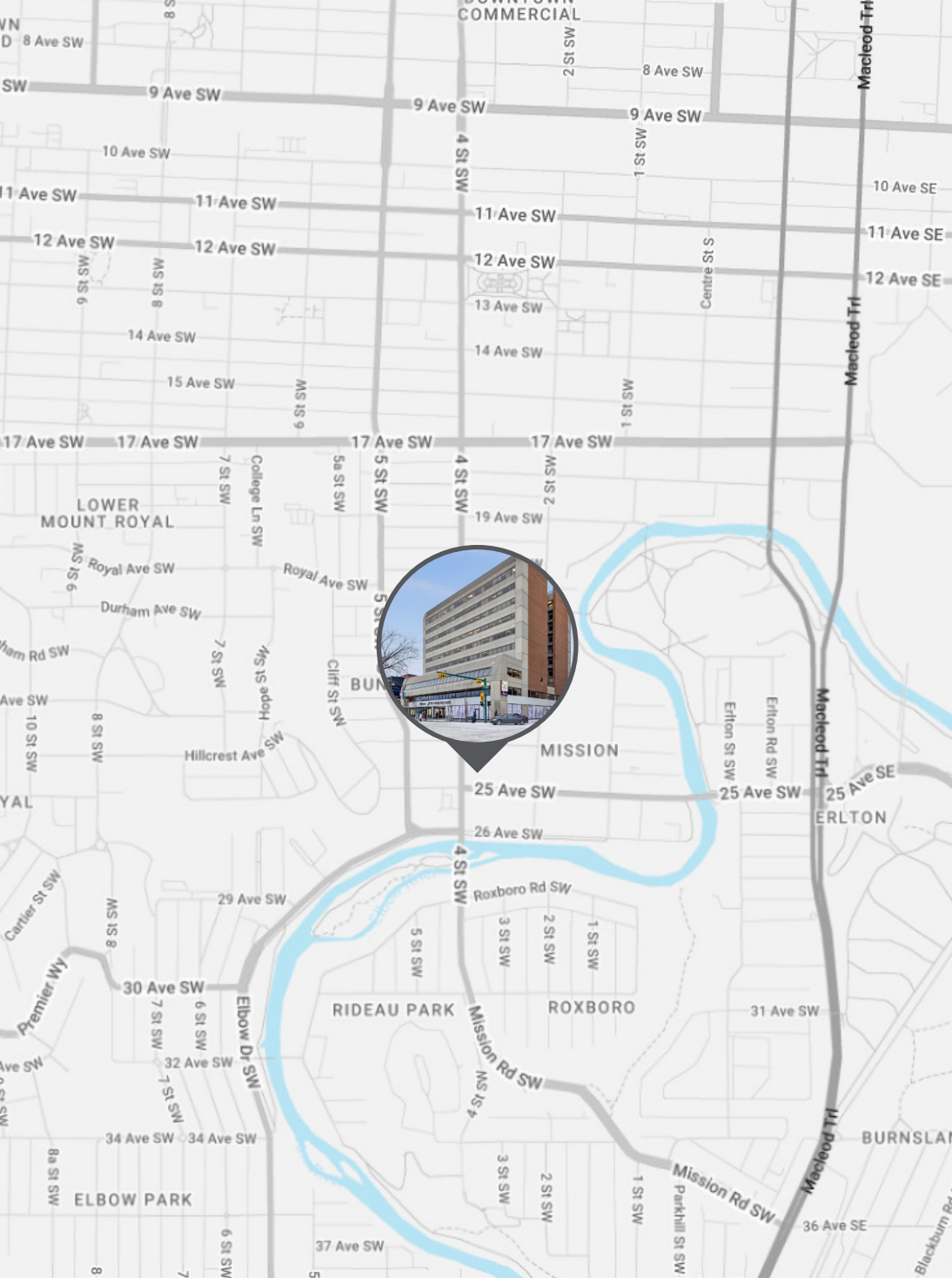


Landlord Standard Turnkey Example

Landlord Standard Turnkey Example

3,040 SF
Suite 1010





Nearby Amenities



CONTACT INFORMATION



TRENT PETERSON

Vice President
+1 403 261 1101
trent.peterson@cushwake.com

DAVID LEES

Executive Vice President
+1 403 261 1102
david.lees@cushwake.com

ADAM RAMSAY

Executive Vice President
+1 403 261 1103
adam.ramsay@cushwake.com

Cushman & Wakefield ULC | Suite 2400, 250 6 Ave SW, Calgary, Alberta T2P 3H7 | cushmanwakefield.com

©2026 Cushman & Wakefield. All rights reserved. The information contained in this communication is strictly confidential. This information has been obtained from sources believed to be reliable but has not been verified. NO WARRANTY OR REPRESENTATION, EXPRESS OR IMPLIED, IS MADE AS TO THE CONDITION OF THE PROPERTY (OR PROPERTIES) REFERENCED HEREIN OR AS TO THE ACCURACY OR COMPLETENESS OF THE INFORMATION CONTAINED HEREIN, AND SAME IS SUBMITTED SUBJECT TO ERRORS, OMISSIONS, CHANGE OF PRICE, RENTAL OR OTHER CONDITIONS, WITHDRAWAL WITHOUT NOTICE, AND TO ANY SPECIAL LISTING CONDITIONS IMPOSED BY THE PROPERTY OWNER(S). ANY PROJECTIONS, OPINIONS OR ESTIMATES ARE SUBJECT TO UNCERTAINTY AND DO NOT SIGNIFY CURRENT OR FUTURE PROPERTY PERFORMANCE.