

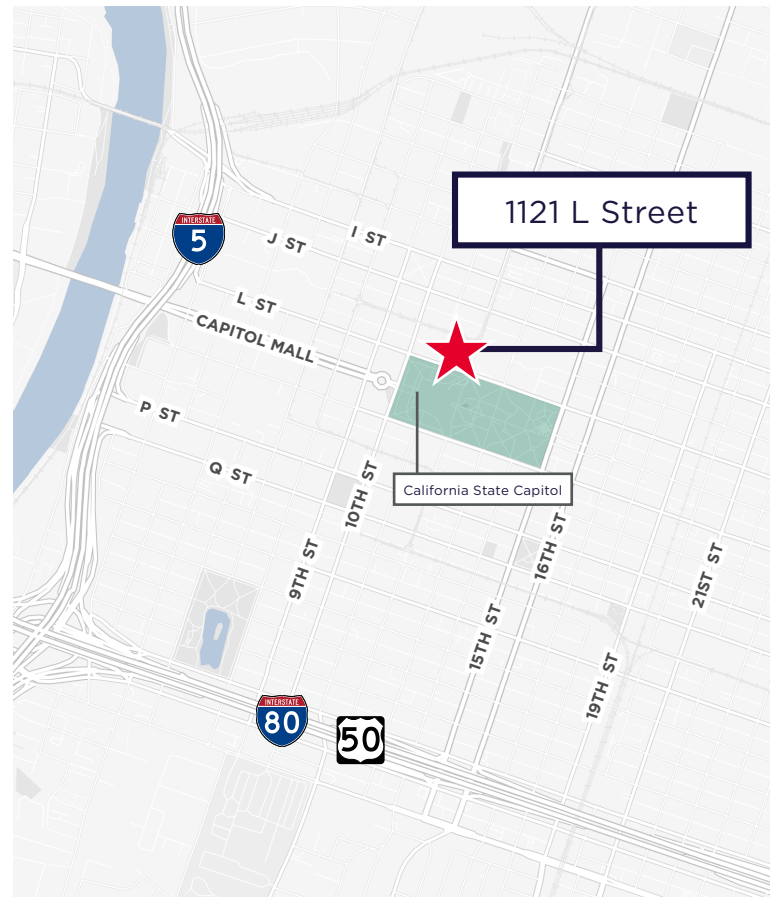


## FOR SUBLEASE

**±2,068 RSF**  
**PLUG-N-PLAY SPACE**

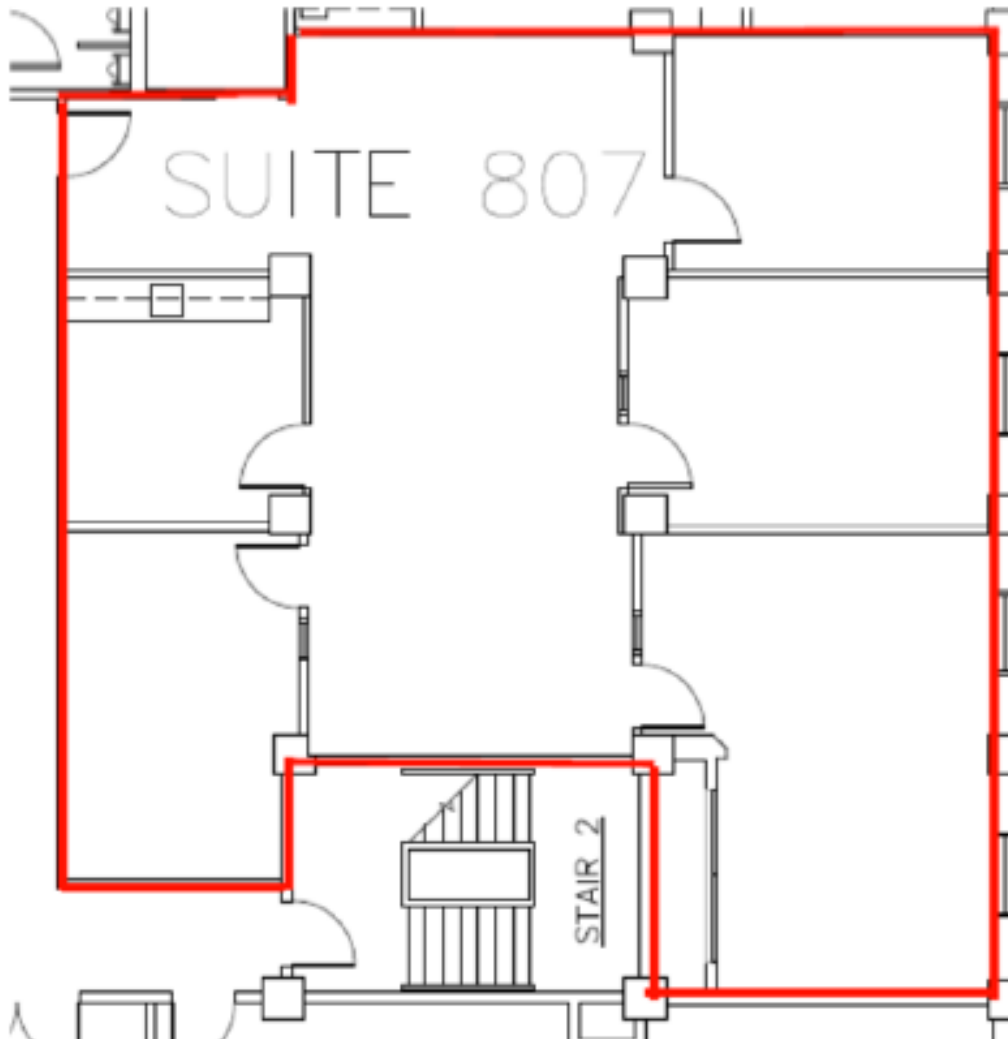
### Property Highlights

- Immediate Proximity to the Capitol
- Numerous amenities within walking distance
- Building common conference room
- Brand new fitness center
- On-site Property Management
- 24-hour security
- **Lease Term: Through 2/28/2030**
- **Lease Rate: \$3.00/SF FSG**



# FLOOR PLAN

## SUITE 807 - ±2,068 RSF



**Jessi Muljat**  
Senior Associate  
+1 916 524 9109  
jessi.muljat@cushwake.com  
Lic #02191822

400 Capitol Mall, Suite 1800  
Sacramento, CA 95814  
+1 916 288 4800