

442 - 456 OAKMEAD PARKWAY

R&D / LAB FOR LEASE | SUNNYVALE

±21,470 SF (DIVISIBLE TO ±6,470 SF)



For more information, please contact:

STEVE PACE
P +1 408 482 7037
steve.pace@cushwake.com
LIC #00817396

DAN HOLLINGSWORTH
P +1 408 615 3431
dan.hollingsworth@cushwake.com
LIC #01117716

TIANA DAMPIER
P +1 408 436 3680
tiana.dampier@cushwake.com
LIC #02191012

300 Santana Row, Fifth Floor
San Jose, California 95128
P +1 408 615 3400
www.cushmanwakefield.com



DOLLINGER PROPERTIES
DRE #02116818



CUSHMAN &
WAKEFIELD

442 - 456 OAKMEAD PARKWAY

Sunnyvale, California

Project Highlights

- High Image Sunnyvale Exposure
- Quick Access to Hwy 101
- Parking: 3.18 Spaces/1000 SF
- 100% HVAC
- Grade Level Loading
- Lab Area

442 Oakmead - ±6,470 SF

- Power: 600A @ 120/208V

452 Oakmead - ±7,500 SF

- Power: 400A @ 120/208V
- Class 10,000 Clean Room

456 Oakmead - ±7,500 SF

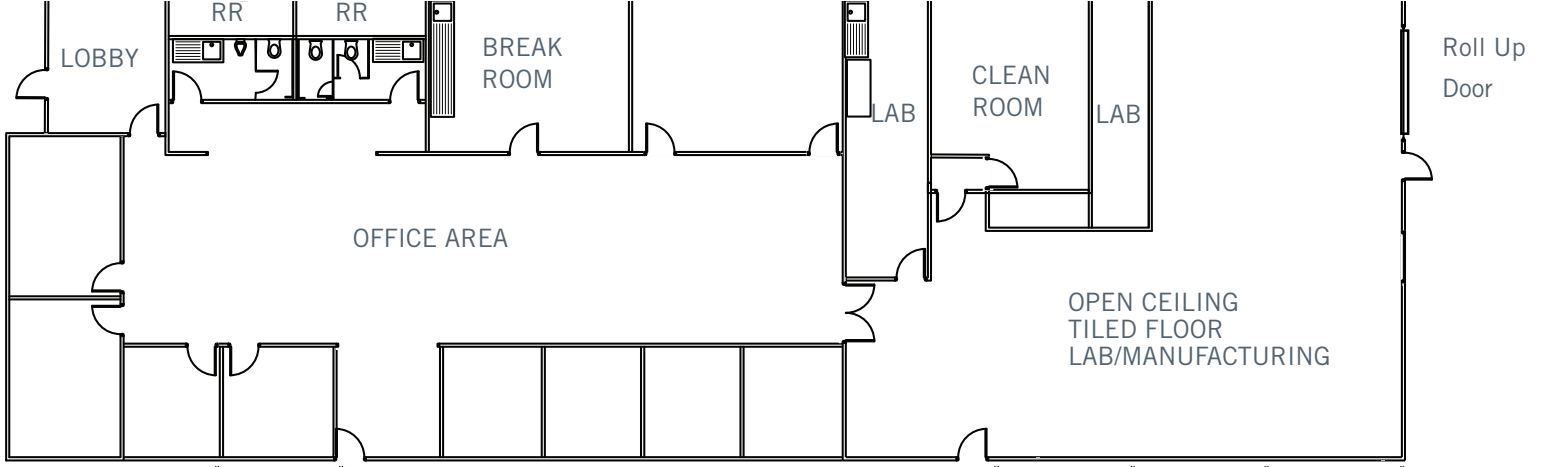
- Power: 400A @ 120/208V



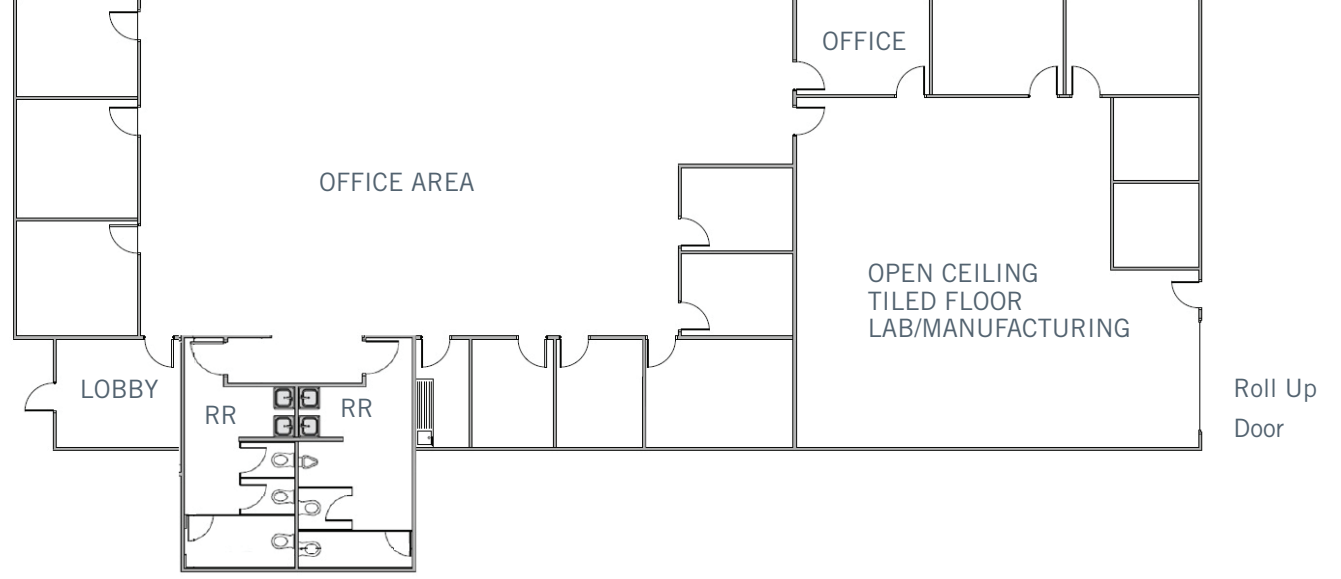
456 OAKMEAD
±7,500 SF



452 OAKMEAD
±7,500 SF



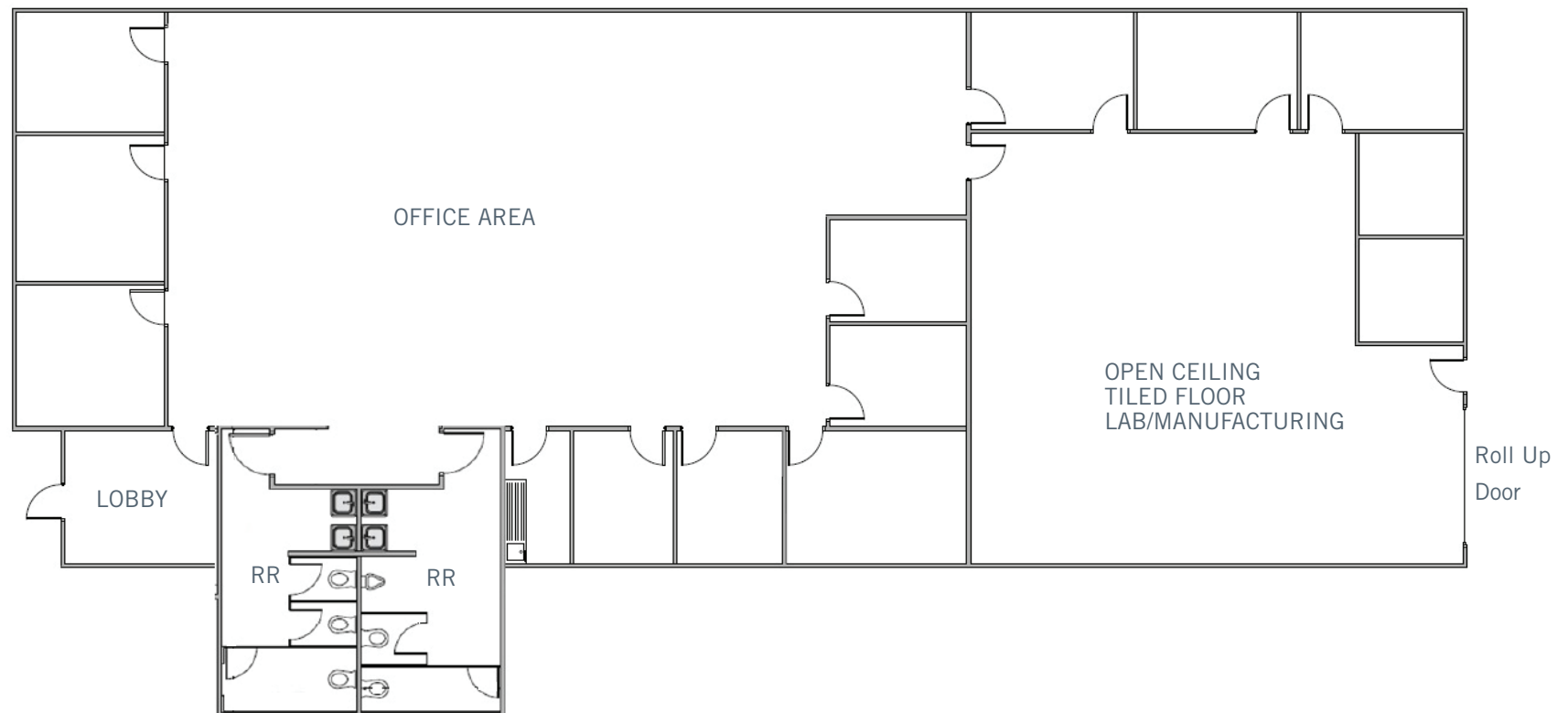
442 OAKMEAD
±6,470 SF



TOTAL: ±21,470 SF

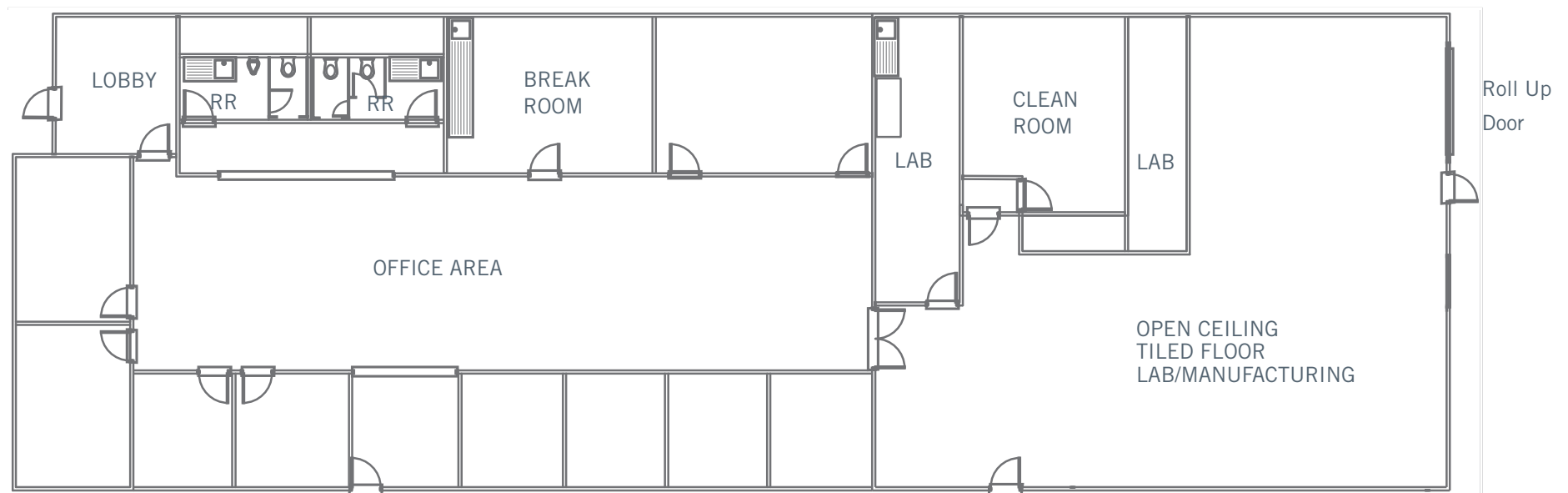
Floor Plan

±6,470 SF (SUBLEASE LED 12/31/2026 OR DIRECT)



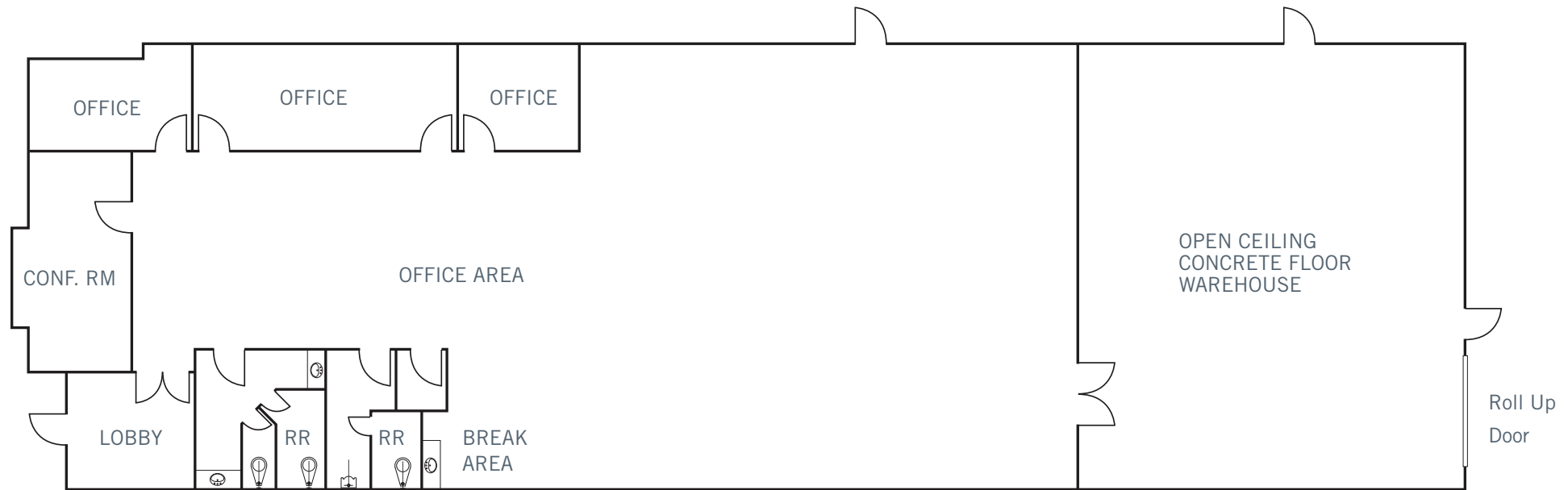
Floor Plan

±7,500 SF (SUBLEASE LED 12/31/2026 OR DIRECT)



Floor Plan

±7,500 SF (SUBLEASE LED 8/31/2026 OR DIRECT)



442 - 456 OAKMEAD PARKWAY

Sunnyvale, California

Public Transit and Amenities

