

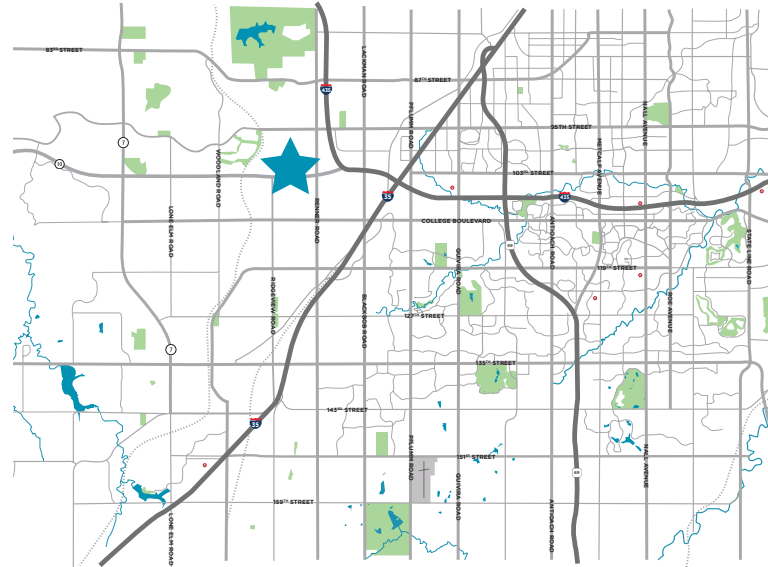
FOR LEASE

17775 W 106th Street  
Olathe, KS



## Property Highlights

- Class A space with direct building lobby access
- Enjoy lots of natural light in this well maintained property
- Local ownership
- Suite 201: 4,793 RSF (divisible)
- Possible monument signage
- Modern finishes throughout the building which is situated in a park-like setting
- Lease Rate: \$23.50 PSF full service
- Easy access at K-10 & Ridgeview
- Close proximity to Lenexa City Center, popular restaurants, hotels, Genesis Health Club and the Olathe Conference Center

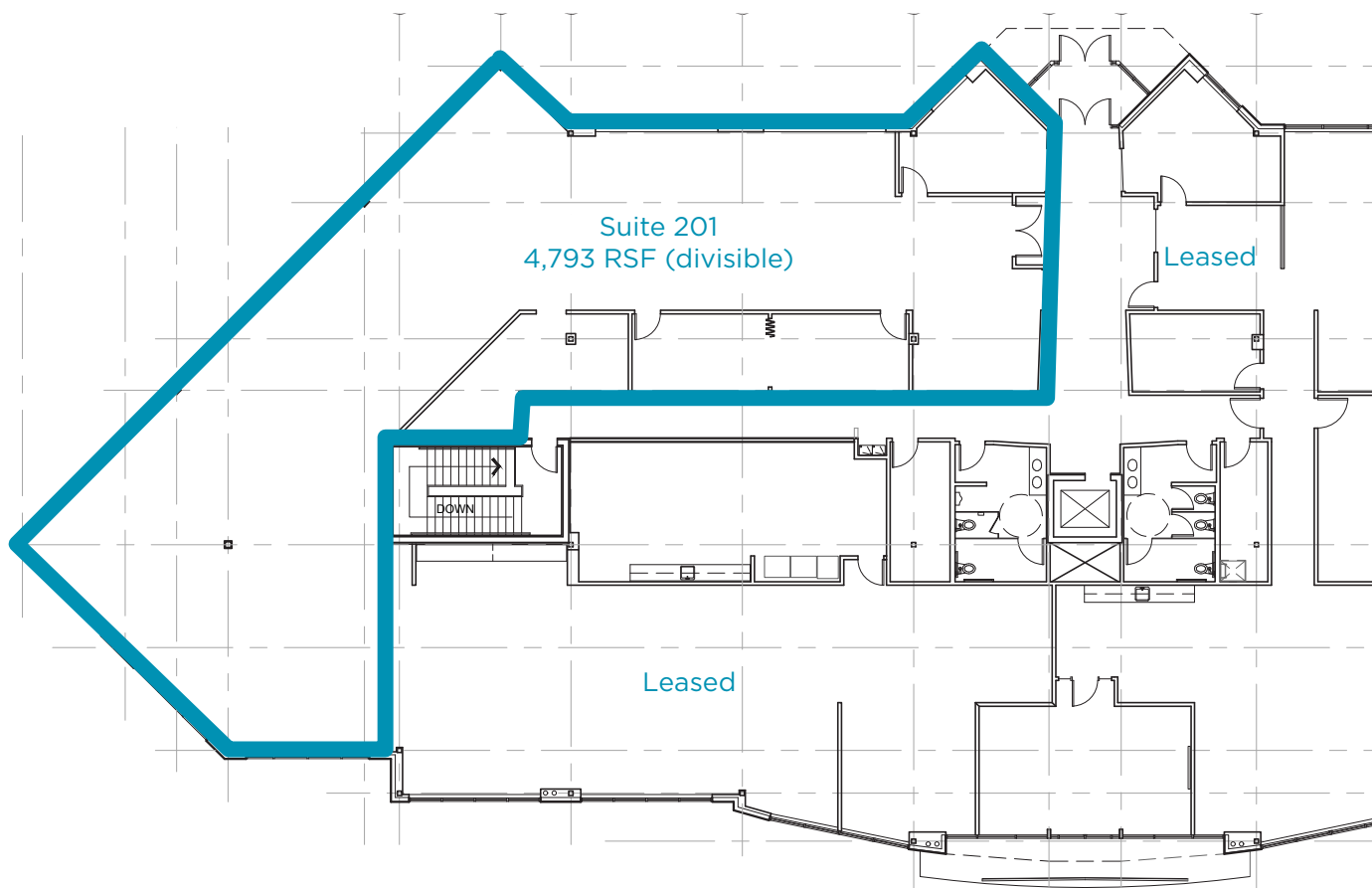


## Contact

MARTY GILCHRIST, CCIM  
Senior Associate  
+1 816 216 5655  
marty.gilchrist@cushwake.com

4600 Madison Avenue, Suite 800  
Kansas City, MO 64112  
Main +1 816 221 2200  
Fax +1 913 273 1398  
[cushmanwakefield.com](http://cushmanwakefield.com)

## SUITE 201 4,793 RSF (divisible)



## Contact

MARTY GILCHRIST, CCIM  
Senior Associate  
+1 816 216 5655  
[marty.gilchrist@cushwake.com](mailto:marty.gilchrist@cushwake.com)





Bird's Eye View



## Contact

MARTY GILCHRIST, CCIM  
Senior Associate  
+1 816 216 5655  
marty.gilchrist@cushwake.com

4600 Madison Avenue, Suite 800  
Kansas City, MO 64112  
Main +1 816 221 2200  
Fax +1 913 273 1398  
[cushmanwakefield.com](http://cushmanwakefield.com)