

FOR LEASE

57,720 - 118,400 SF

AVAILABLE NOVEMBER 1, 2026

PRIME EAST
TAMPA LOCATION



TAMPA FULFILLMENT CENTER

101 SOUTH 34TH ST | TAMPA, FL 33605

PROPERTY HIGHLIGHTS

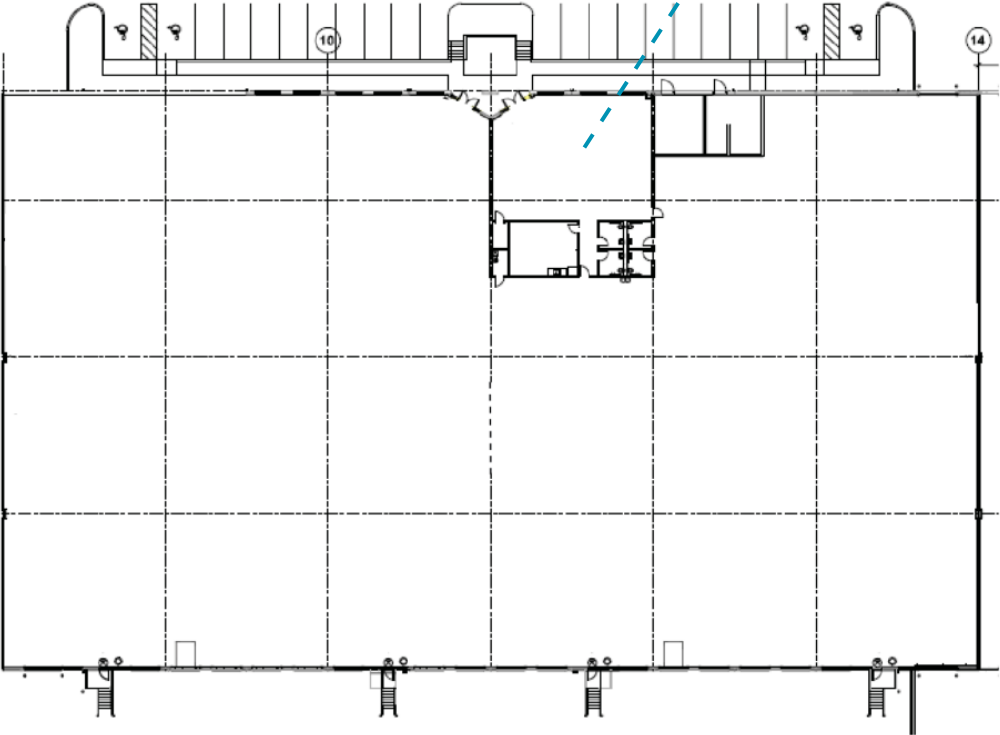
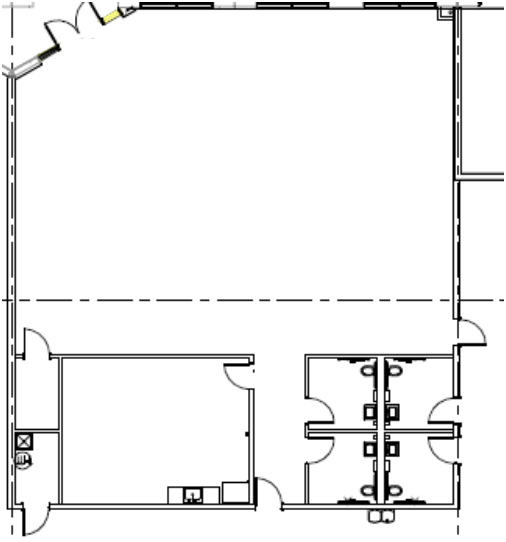
BUILDING SIZE:	178,367 SF
SPACE AVAILABLE:	57,720 - 118,400 SF
SITE AREA:	18.15 Acres
CLEAR HEIGHT:	32'
TRUCK COURT:	130'
DOCK-HIGH LOADING:	(48) Dock High Doors
DRIVE-IN LOADING:	(11) Drive In Doors (12' x 14')
AUTO PARKING:	297 Spaces (1.7 per 1,000 RSF)
SPRINKLERS:	ESFR
COLUMN SPACING:	52' x 50'
FLOOR SLAB:	6" Concrete; Supports 3500 PSI
POWER:	3,000 Amps, 480 Volt, 3-Phase
CONSTRUCTION:	Modern Tilt-Wall
YEAR BUILT:	2020
ROOF:	R-25 Insulated
LIGHTING:	LED



SPACES AVAILABLE

SUITE C

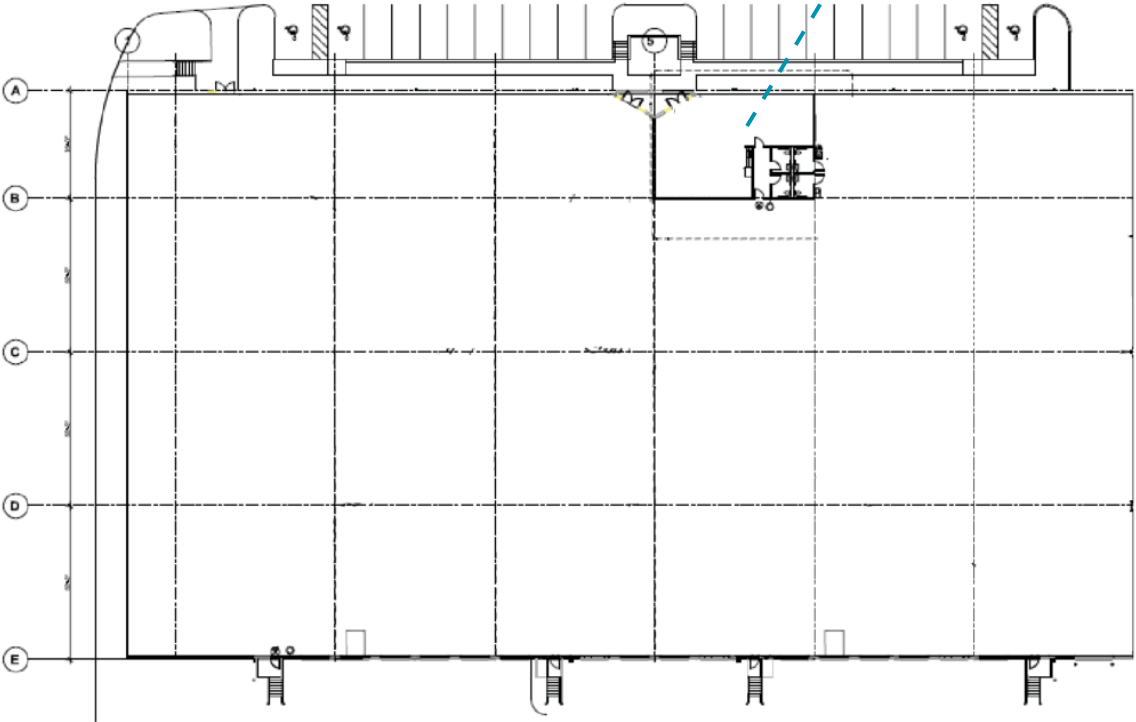
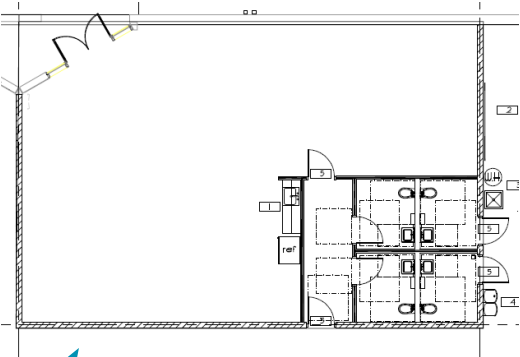
TOTAL SF:	57,720 SF
OFFICE SF:	± 2,715 SF
LOADING:	(16) Dock High Doors (4) Drive In Doors
AVAILABLE:	11/1/2026



SPACES AVAILABLE

SUITE E

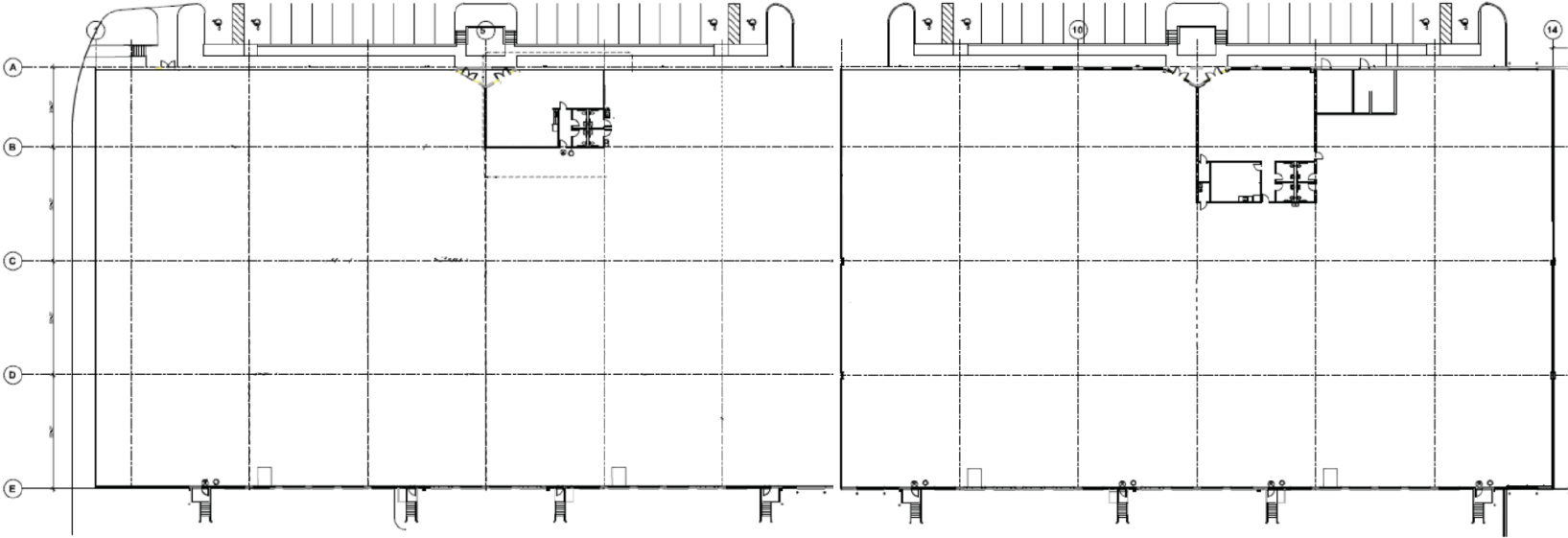
TOTAL SF:	60,680 SF
OFFICE SF:	1,810 SF
LOADING:	(16) Dock High Doors (4) Drive In Doors
AVAILABLE:	11/1/2026

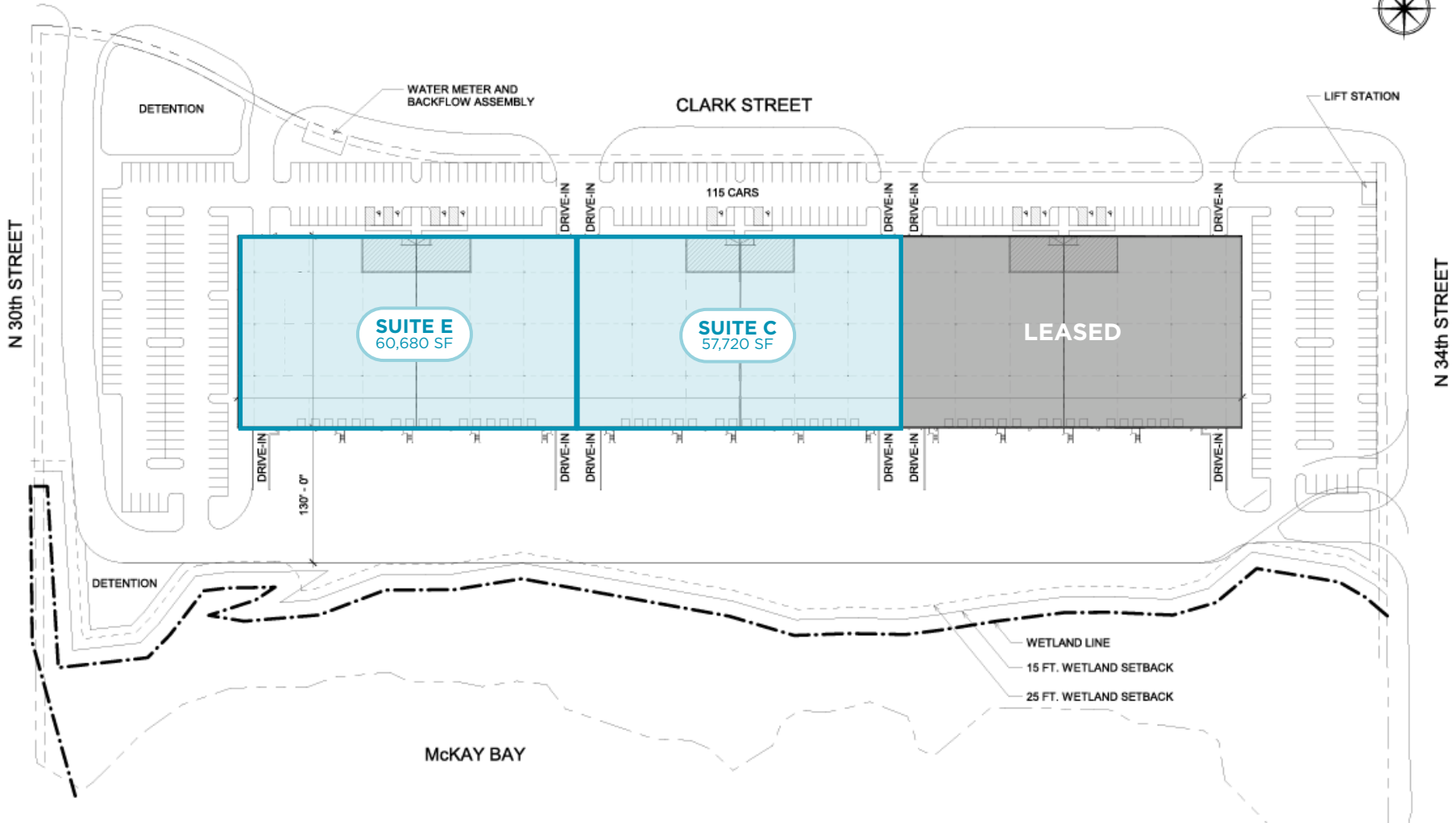


SPACES AVAILABLE

SUITES C & E

TOTAL SF:	118,400 SF
OFFICE SF:	± 4,525 SF
LOADING:	(32) Dock High Doors (8) Drive In Doors
AVAILABLE:	11/1/2026





SITE PLAN

AERIAL MAP

TAMPA FULFILLMENT CENTER | TAMPA, FL



LOCATION HIGHLIGHTS



3 MILES
TO INTERSTATE 4

4 MILES
TO INTERSTATE 275

1 MILE
TO US HWY 60

2 MILES
TO TAMPA CBD

10 MILES
TO TAMPA
INTN'L AIRPORT



CONTACT INFO:

LISA ROSS, SIOR

Executive Director

+1 813 760 3209

lisa.ross@cushwake.com

TREY CARSWELL, SIOR

Executive Director

+1 813 230 6131

trey.carswell@cushwake.com

SAM KOROLOS

Director

+1 704 989 1327

sam.korolos@cushwake.com

MELISSA WATTERWORTH

Senior Associate

+1 813 599 2190

melissa.watterworth@cushwake.com



©2026 Cushman & Wakefield. All rights reserved. The material in this presentation has been prepared solely for information purposes, and is strictly confidential. Any disclosure, use, copying or circulation of this presentation (or the information contained within it) is strictly prohibited, unless you have obtained Cushman & Wakefield's prior written consent. The views expressed in this presentation are the views of the author and do not necessarily reflect the views of Cushman & Wakefield. Neither this presentation nor any part of it shall form the basis of, or be relied upon in connection with any offer, or act as an inducement to enter into any contract or commitment whatsoever. NO REPRESENTATION OR WARRANTY IS GIVEN, EXPRESS OR IMPLIED, AS TO THE ACCURACY OF THE INFORMATION CONTAINED WITHIN THIS PRESENTATION, AND CUSHMAN & WAKEFIELD IS UNDER NO OBLIGATION TO SUBSEQUENTLY CORRECT IT IN THE EVENT OF ERRORS.