

**FOR LEASE**

**1405 MOUNTAIN RD**  
MONCTON, NB

**GARDAWORLD**

**GARDAWORLD**

A2



**CANADA HOUSE**  
Experts in Cann

Access to  
**Medical  
Cannabis**

[canadahouseclinics.ca](http://canadahouseclinics.ca)  
Contact Us Today to Register

Hours of Operation  
Monday - Friday  
9am - 6pm  
Saturday & Sunday  
Closed

**SUITE A3 | 1,000 SF**

# PROPERTY OVERVIEW

This exceptional commercial space is ideally located in a **prime business district** in Moncton, with easy access to highways and public transport.

This **ground-level plaza** features a prominent building with clear signage on both the building and roadside pylon.

The unit offers **1,000 sf** of space, featuring a bright reception area, a spacious open-concept workspace, an accessible washroom, and a storage room with rear access.

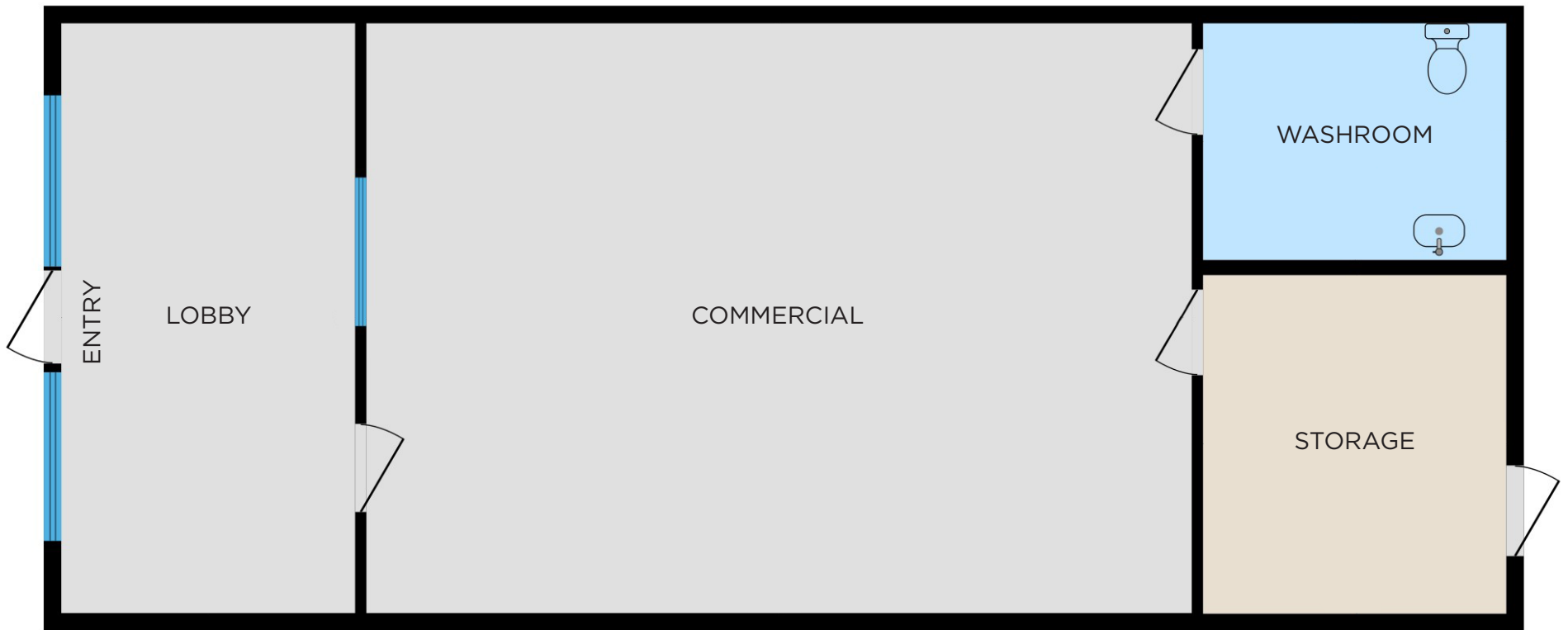
Located in a vibrant commercial hub with **on-site shared parking**, this unit is ideal for professional offices, boutique retail, clinics, studios, and other businesses seeking strong exposure.

<b>MLS</b>	NB137191
<b>Suite</b>	A3
<b>Suite Size</b>	1,000 sf
<b>Lease rate</b>	\$18.00 psf Net
<b>Additional rent</b>	\$12.17 psf
<b>Parking</b>	± 73 paved parking spots
<b>Zoning</b>	ID - Integrated Development Zone





# FLOOR PLAN



**SUITE A3** | 1,000 SF

# LOCATION MAP



This prime commercial space is strategically situated on Mountain Road, a busy street that guarantees outstanding visibility.

This space is in a vibrant commercial district, surrounded by a variety of amenities and with easy access to Wheeler Boulevard and the Trans-Canada Highway.



**ADAM MAGEE**  
Managing Director NB/NL  
+1 506 872 2507  
amagee@cwatlantic.com

**SUZIE TAYLOR**  
Commercial Real Estate Advisor  
+1 506 380 1777  
staylor@cwatlantic.com



©2026 Cushman & Wakefield. All rights reserved. The information contained in this communication is strictly confidential. This information has been obtained from sources believed to be reliable but has not been verified. NO WARRANTY OR REPRESENTATION, EXPRESS OR IMPLIED, IS MADE AS TO THE CONDITION OF THE PROPERTY (OR PROPERTIES) REFERENCED HEREIN OR AS TO THE ACCURACY OR COMPLETENESS OF THE INFORMATION CONTAINED HEREIN, AND SAME IS SUBMITTED SUBJECT TO ERRORS, OMISSIONS, CHANGE OF PRICE, RENTAL OR OTHER CONDITIONS, WITHDRAWAL WITHOUT NOTICE, AND TO ANY SPECIAL LISTING CONDITIONS IMPOSED BY THE PROPERTY OWNER(S). ANY PROJECTIONS, OPINIONS OR ESTIMATES ARE SUBJECT TO UNCERTAINTY AND DO NOT SIGNIFY CURRENT OR FUTURE PROPERTY PERFORMANCE.