

269

WYCKOFF
MILLS ROAD

EAST WINDSOR, NJ

TURNPIKE FRONTAGE



FOR LEASE
121,500 SF

Available Short or Long-Term





// BUILDING SPECS

TOTAL SIZE

121,500 SF on 14.07 Acres

TOTAL AVAILABLE

121,500 SF

OFFICE AREA

1,400 SF (2nd FL)
500 SF Shipping Office

CEILING HEIGHT

44' Clear

LOADING DOORS

27

DRIVE-IN DOORS

1

COLUMN SPACING

42' x 52.5'

POWER

1,500 kVA / 2,500 Amps

SPRINKLER

ESFR

TAXES & CAM

\$3.60/SF

ASKING LEASE RATE

Call for Pricing

OCCUPANCY

Immediate

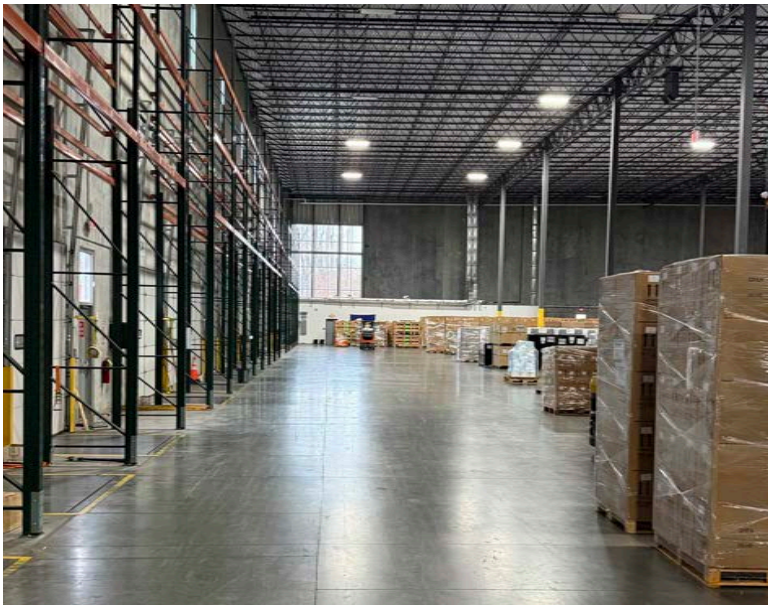
COMMENTS

- Docks Seals, 40,000 lb Hydraulic Levelers, Bumpers with Lighting
- T-5 Fixtures 20fc with Motion Sensors
- 35 Car Parking
- Racking Available

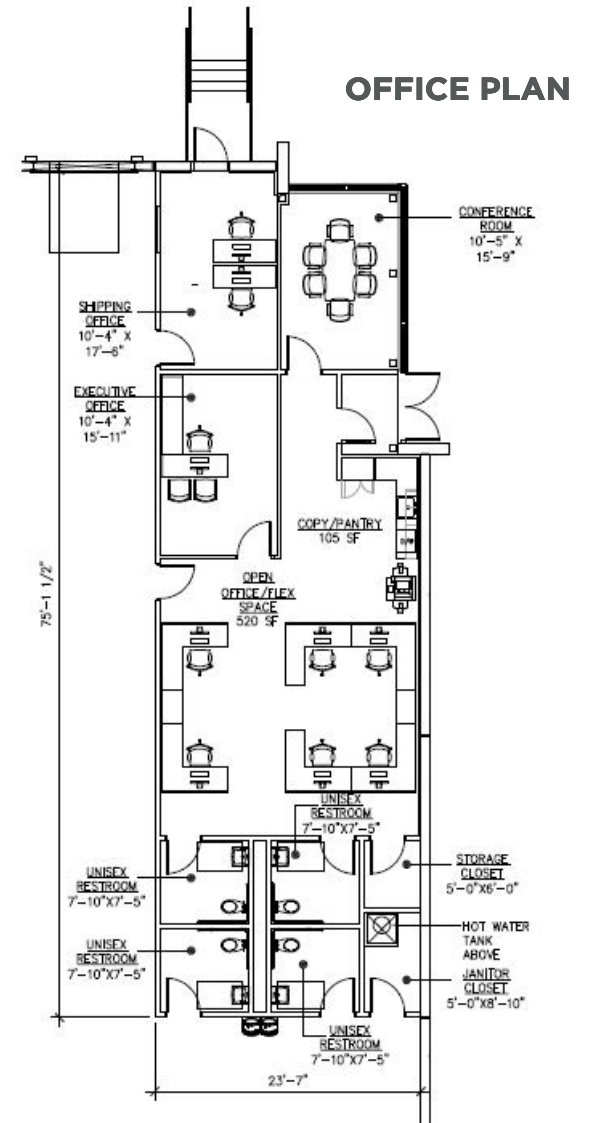
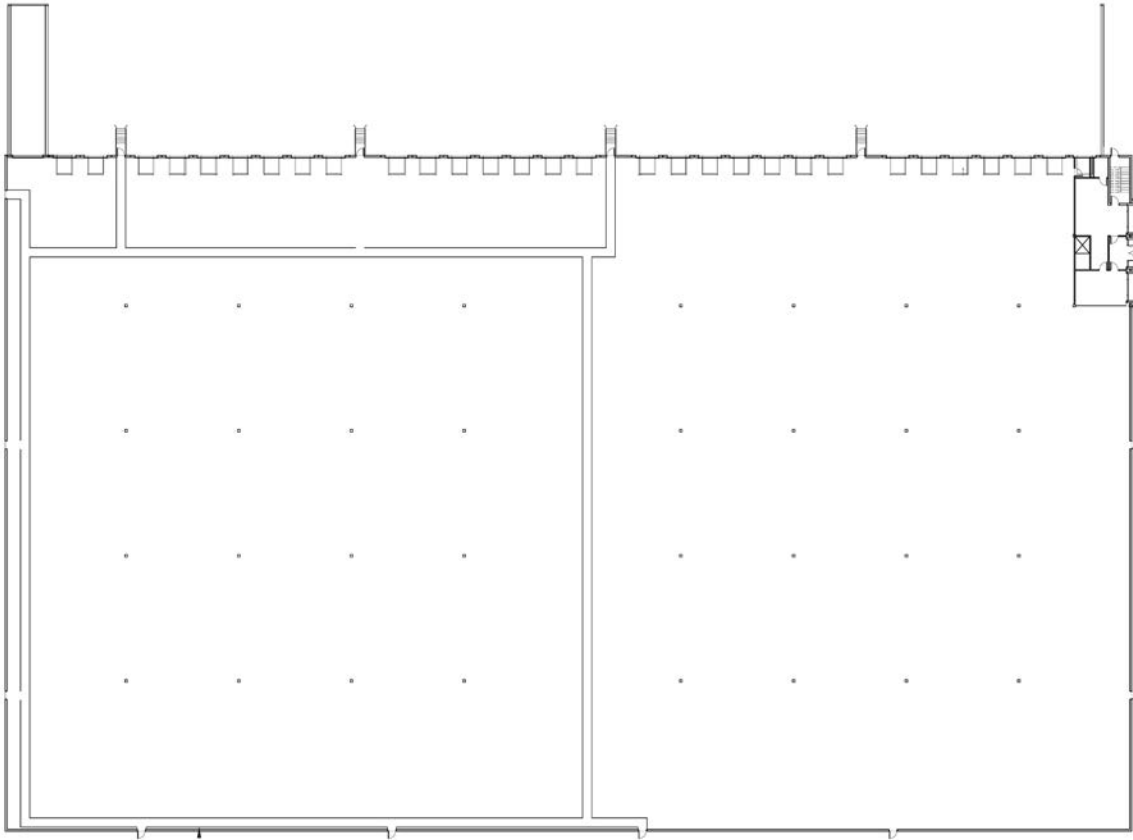
// GALLERY

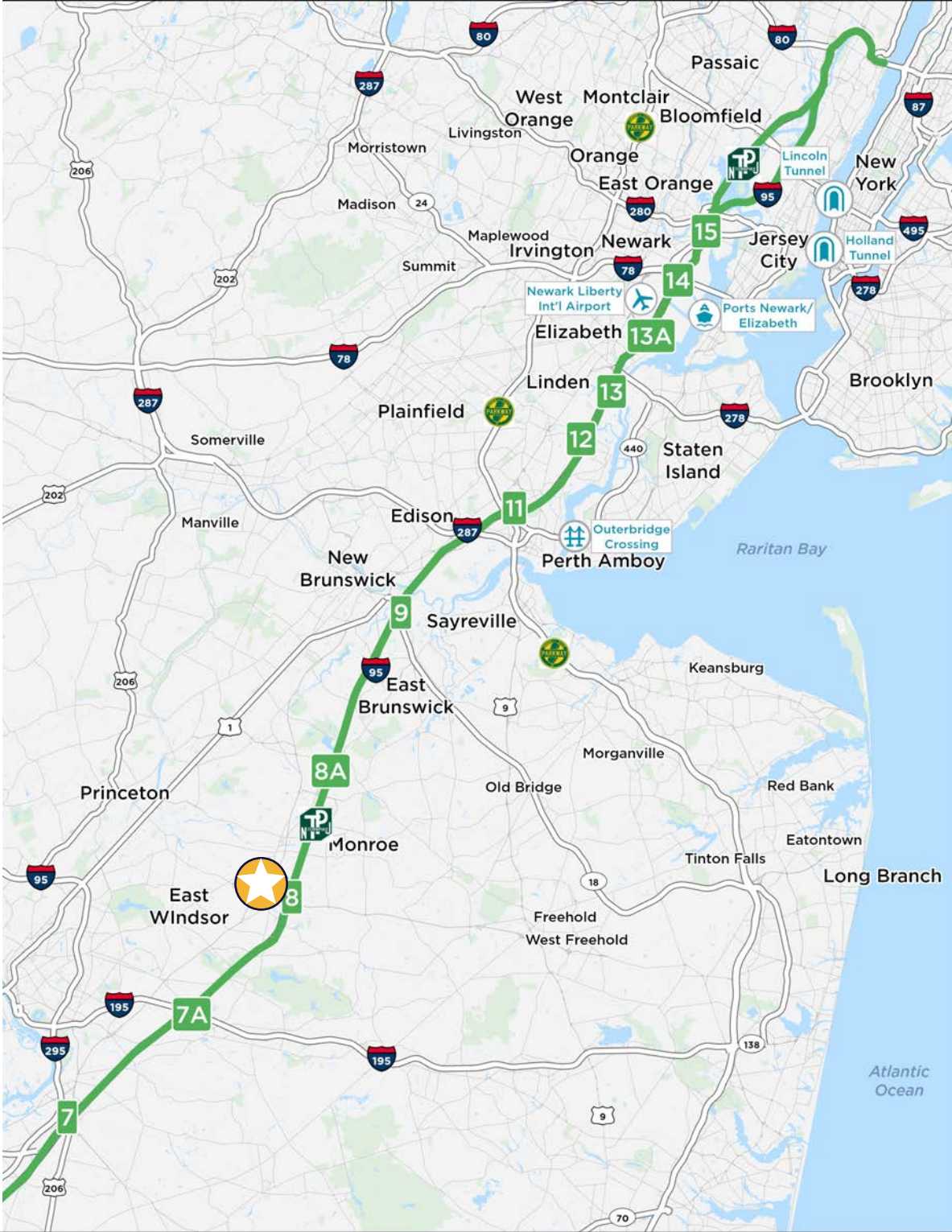


// GALLERY



// FLOOR PLANS





EXITS & DRIVING DISTANCES

NJ Turnpike Exit 8	0.5 mi
Route 287	28.0 mi
Outerbridge Crossing	28.3 mi
Staten Island	35.4 mi
Route 78	37.4 mi
Ports Newark/Elizabeth	42.0 mi
Holland Tunnel	48.3 mi
Philadelphia	48.3 mi
Lincoln Tunnel	52.3 mi
Manhattan	53.0 mi
GW Bridge	55.9 mi

269 WYCKOFF MILLS ROAD
East Windsor, NJ

269

WYCKOFF MILLS ROAD

EAST WINDSOR, NJ



CONTACT

Charles Fern

+1 732 243 3101

chuck.fern@cushwake.com

Jason Barton, SIOR

+1 732 243 3104

jason.barton@cushwake.com

Andrew O. Roberts

+1 732 243 3123

andrew.o.roberts@cushwake.com



99 Wood Avenue South, 8th Floor | Iselin, NJ 08830 | +1 732 623 4700
One Meadowlands Plaza, 7th Floor | East Rutherford, NJ 07073 | +1 201 935 4000
cushmanwakefield.com

©2026 Cushman & Wakefield. All rights reserved. The information contained in this communication is strictly confidential. This information has been obtained from sources believed to be reliable but has not been verified. NO WARRANTY OR REPRESENTATION, EXPRESS OR IMPLIED, IS MADE AS TO THE CONDITION OF THE PROPERTY (OR PROPERTIES) REFERENCED HEREIN OR AS TO THE ACCURACY OR COMPLETENESS OF THE INFORMATION CONTAINED HEREIN, AND SAME IS SUBMITTED SUBJECT TO ERRORS, OMISSIONS, CHANGE OF PRICE, RENTAL OR OTHER CONDITIONS, WITHDRAWAL WITHOUT NOTICE, AND TO ANY SPECIAL LISTING CONDITIONS IMPOSED BY THE PROPERTY OWNER(S). ANY PROJECTIONS, OPINIONS OR ESTIMATES ARE SUBJECT TO UNCERTAINTY AND DO NOT SIGNIFY CURRENT OR FUTURE PROPERTY PERFORMANCE. PD-43763_V12