

**110-112**

**CARPENTER AVE**

WHEELING, IL



**5,800 SF  
AVAILABLE**

**GABRIEL STRAUSS** | Senior Associate | +1 847 668 8833 | [gabriel.strauss@cushwake.com](mailto:gabriel.strauss@cushwake.com)  
**ERIC FISCHER** | Vice Chair | +1 847 720 1369 | [eric.fischer@cushwake.com](mailto:eric.fischer@cushwake.com)



# SPACE FEATURES & EXISTING SITE PLAN

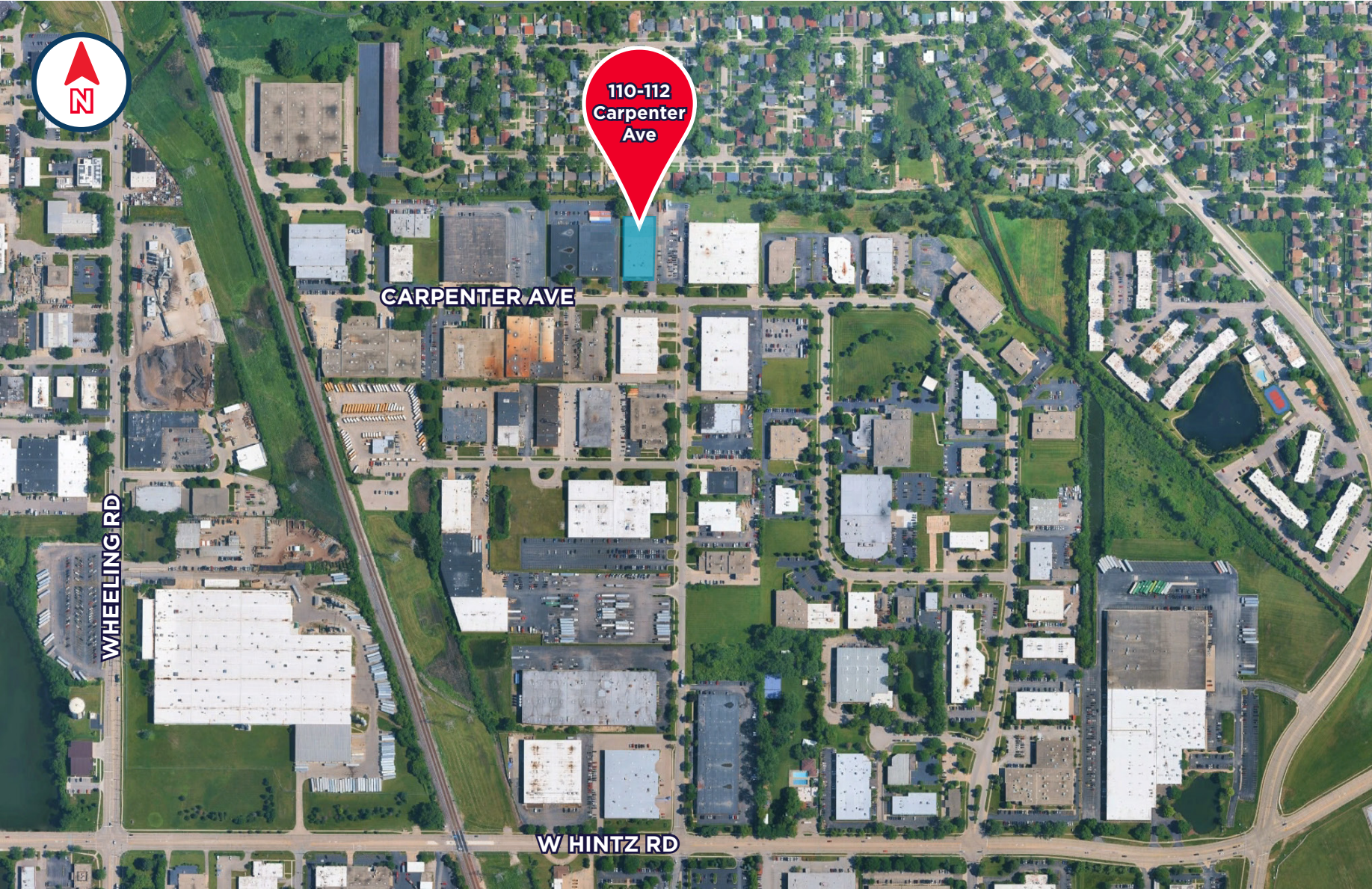
**110-112 CARPENTER AVENUE**  
WHEELING, IL

Total Building Size:	28,314 SF	Parking:	8 Car Spaces
Available Space:	5,800 SF	Clear Height:	18'
Office Size:	300 SF	Power:	800 Amps
Loading:	1 Interior Truck Dock		



# AERIAL VIEW

# 110-112 CARPENTER AVENUE WHEELING, IL



GABRIEL STRAUSS | Senior Associate | +1 847 668 8833 | gabriel.strauss@cushwake.com  
ERIC FISCHER | Vice Chair | +1 847 720 1369 | eric.fischer@cushwake.com





For more information,  
please contact:

**GABRIEL STRAUSS**

Senior Associate

+1 847 668 8833

[gabriel.strauss@cushwake.com](mailto:gabriel.strauss@cushwake.com)

**ERIC FISCHER**

Vice Chair

+1 847 720 1369

[eric.fischer@cushwake.com](mailto:eric.fischer@cushwake.com)



©2026 Cushman & Wakefield. All rights reserved. The information contained in this communication is strictly confidential. This information has been obtained from sources believed to be reliable but has not been verified. NO WARRANTY OR REPRESENTATION, EXPRESS OR IMPLIED, IS MADE AS TO THE CONDITION OF THE PROPERTY (OR PROPERTIES) REFERENCED HEREIN OR AS TO THE ACCURACY OR COMPLETENESS OF THE INFORMATION CONTAINED HEREIN, AND SAME IS SUBMITTED SUBJECT TO ERRORS, OMISSIONS, CHANGE OF PRICE, RENTAL OR OTHER CONDITIONS, WITHDRAWAL WITHOUT NOTICE, AND TO ANY SPECIAL LISTING CONDITIONS IMPOSED BY THE PROPERTY OWNER(S). ANY PROJECTIONS, OPINIONS OR ESTIMATES ARE SUBJECT TO UNCERTAINTY AND DO NOT SIGNIFY CURRENT OR FUTURE PROPERTY PERFORMANCE. PD-190953 V4