

FOR SALE

HUDSON INDUSTRIAL BUILDING

5633 Hudson Industrial Parkway
Hudson, Ohio 44236

Beautifully maintained freestanding industrial building with excellent manufacturing amenities located in a business-friendly community with easy access to a skilled workforce.



BUILDING OVERVIEW

5633 HUDSON INDUSTRIAL PARKWAY | HUDSON, OH 44236



PROPERTY HIGHLIGHTS

- Beautifully maintained freestanding industrial building with excellent manufacturing amenities including 2000A / 480V / 3P power, epoxy floors, and locker rooms
- New roof installed in 2022 with a 20-year warranty
- Excellent location in Hudson, OH with excellent access to SR-8
- Located in a business friendly community with easy access to a skilled workforce
- Sitting on 4.62 acres which allows for building expansion or outside storage
- Income-producing opportunity – currently leased to Leaf Filter until December 2027; financials will be provided upon request

Property Specifications

Total Building Size:

22,800 SF

Office Size:

3,961 SF

Constructed:

1996

Total Site Size:

4.62 acres

Power:

2000A / 480V / 3P

Clear Height:

18'-19'

Docks Doors:

2 (8' x 9')

Drive-In Doors:

1 (12' x 14')

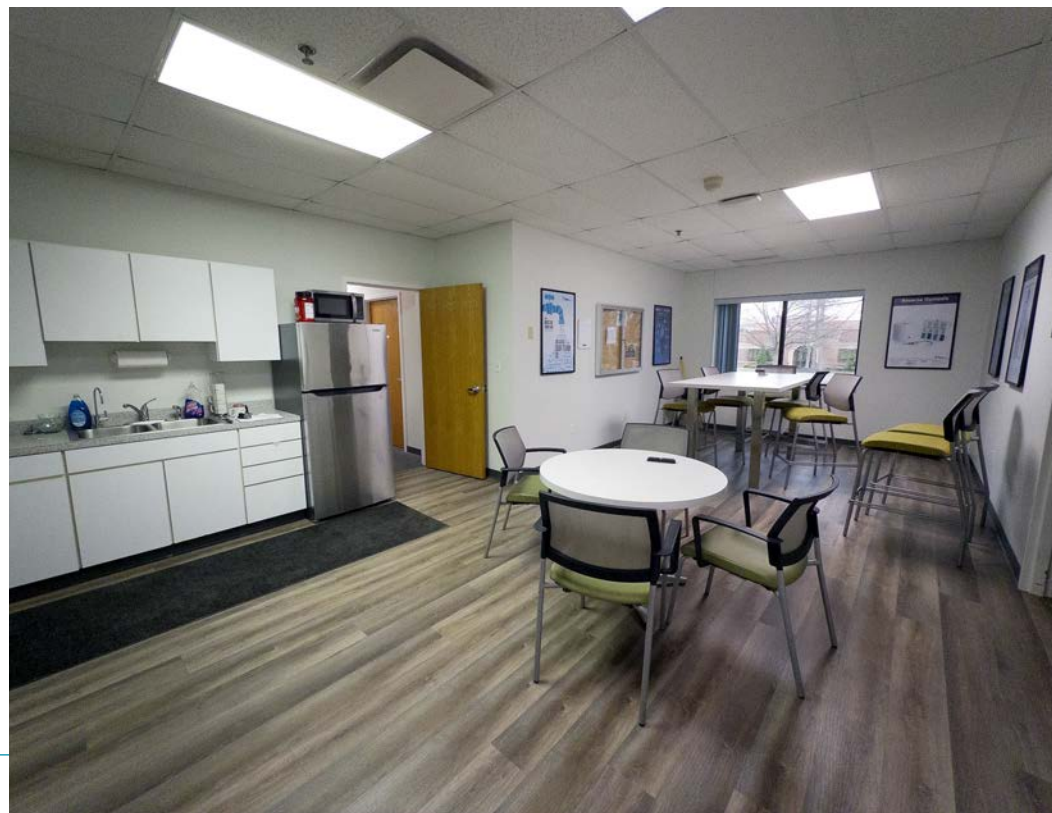
Column Spacing:

40' x 40'

SALE PRICE:

\$1,900,000 (\$83.33/SF)

PROPERTY PHOTOS



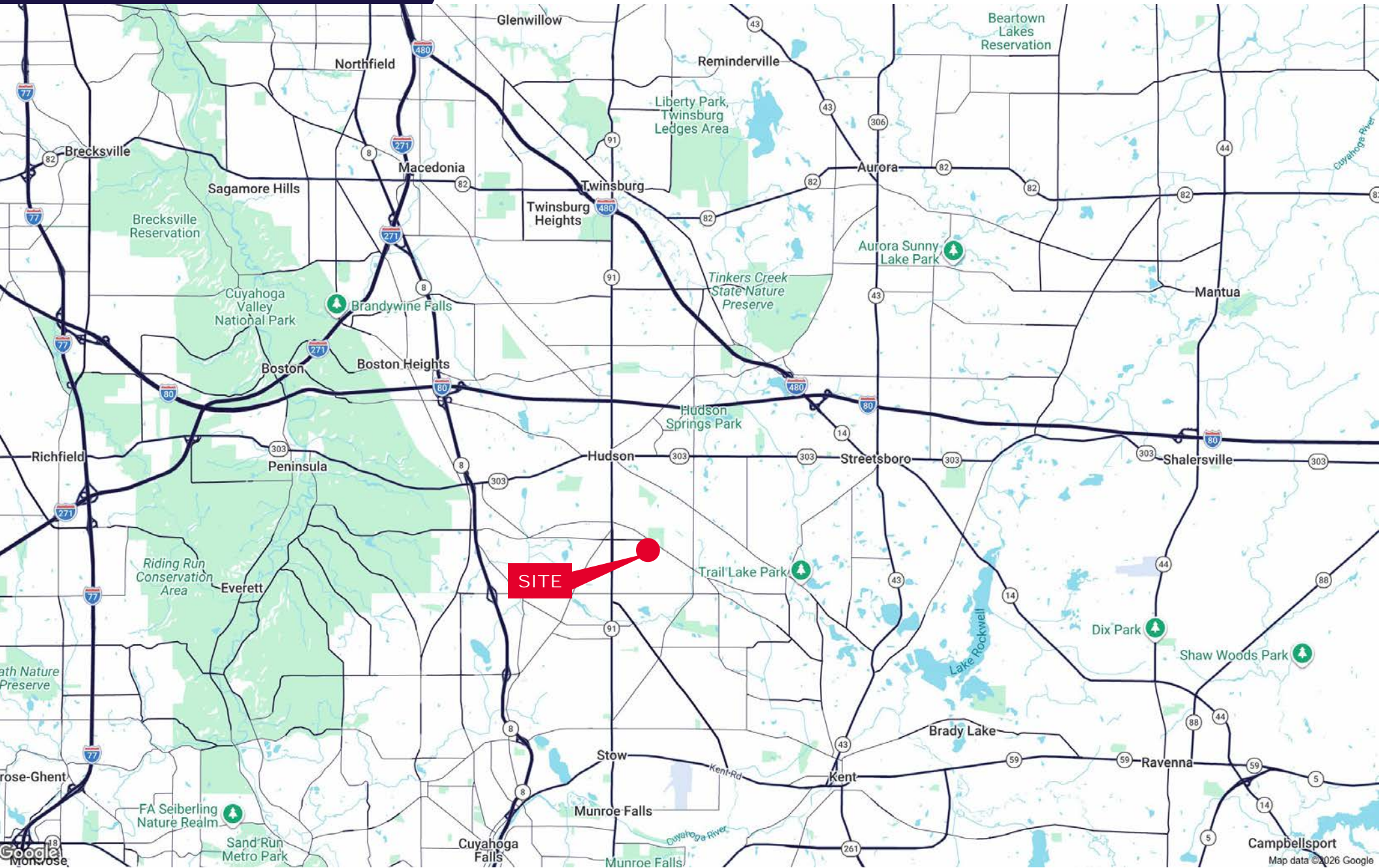
PROPERTY PHOTOS



AERIAL PHOTO



AREA HIGHWAY MAP





5633 HUDSON INDUSTRIAL PARKWAY HUDSON, OH 44236

SAL RUSSO
Tri-State Realty, Inc.
+1 216 314 7075
salrussotristate@outlook.com

ELIOT KIJEWski, SIOR
Principal
+1 216 525 1487
ekijewski@crescorealestate.com

COLE SORENSON
Senior Associate
+1 216 525 1470
csorenson@crescorealestate.com



Cushman & Wakefield | CRESCO
6100 Rockside Woods Blvd, Suite 200
Cleveland, Ohio 44131

crescorealestate.com

©2026 Cushman & Wakefield. All rights reserved. The information contained in this communication is strictly confidential. This information has been obtained from sources believed to be reliable but has not been verified. NO WARRANTY OR REPRESENTATION, EXPRESS OR IMPLIED, IS MADE AS TO THE CONDITION OF THE PROPERTY (OR PROPERTIES) REFERENCED HEREIN OR AS TO THE ACCURACY OR COMPLETENESS OF THE INFORMATION CONTAINED HEREIN, AND SAME IS SUBMITTED SUBJECT TO ERRORS, OMISSIONS, CHANGE OF PRICE, RENTAL OR OTHER CONDITIONS, WITHDRAWAL WITHOUT NOTICE, AND TO ANY SPECIAL LISTING CONDITIONS IMPOSED BY THE PROPERTY OWNER(S). ANY PROJECTIONS, OPINIONS OR ESTIMATES ARE SUBJECT TO UNCERTAINTY AND DO NOT SIGNIFY CURRENT OR FUTURE PROPERTY PERFORMANCE.