



# 3960 RED BANK ROAD

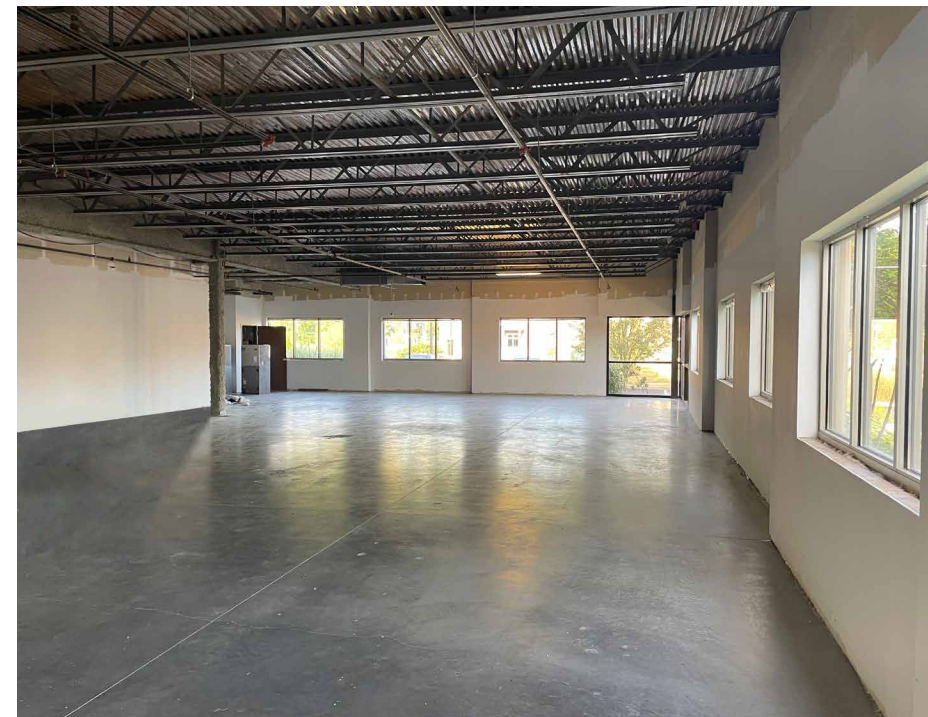
CINCINNATI, OH 45227





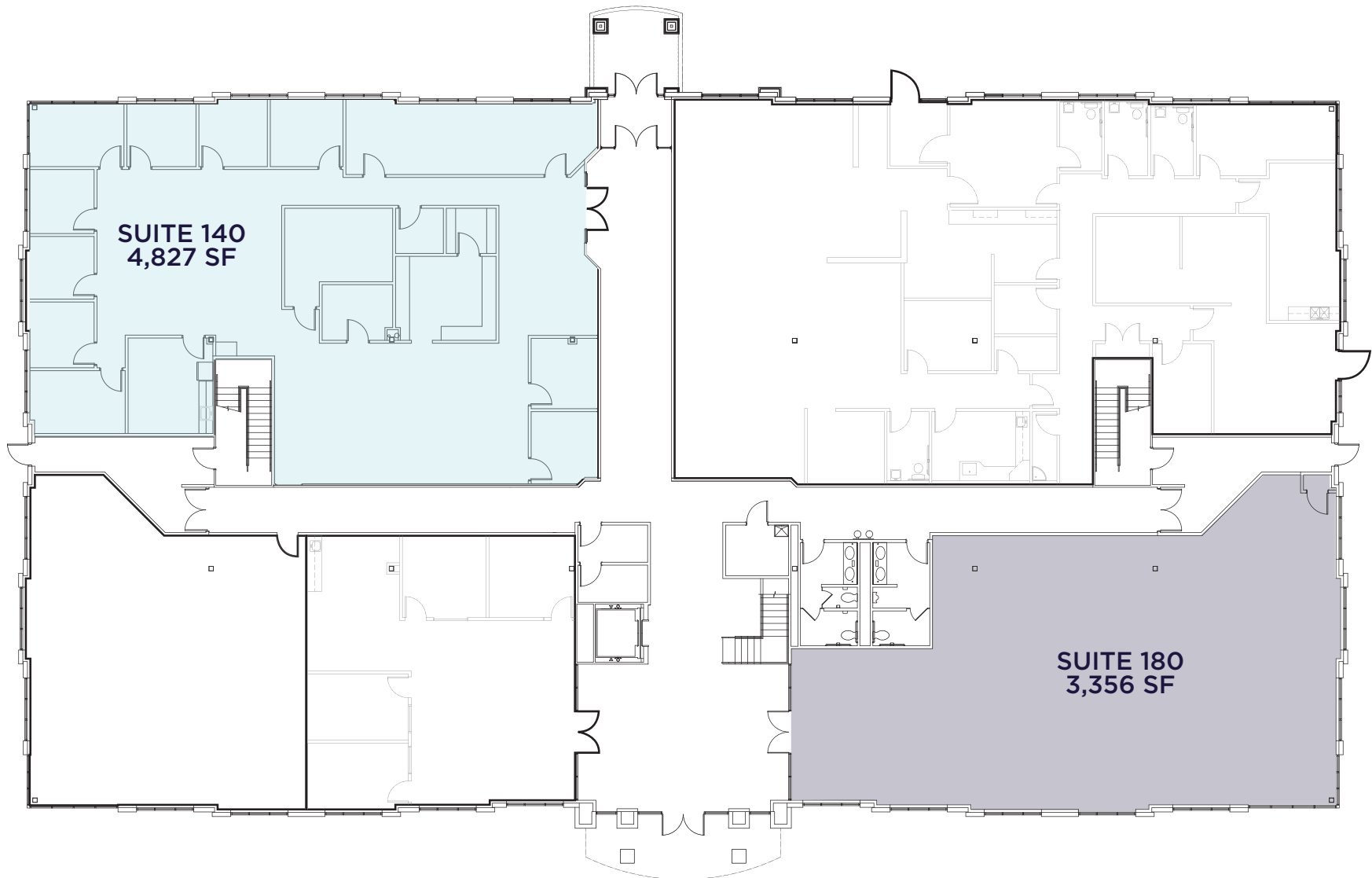
# HIGHLIGHTS

- Two-story, 36,859 SF office building
- Floor 1: 8,183 SF available; Floor 2: 5,604 SF available 11/01/2026
- Immediate first floor lobby exposure
- Adjacent to the Cincinnati Sports Club, Walmart and various restaurants
- Less than 2 miles from The Summit Hotel and Medpace
- Great visibility along Red Bank Expressway
- Immediate access to I-71, Norwood Lateral and SR-50 East
- Ample free parking
- Asking \$14.50 /SF Net + \$8.91 /SF OpEx



# FLOOR 1

8,183 TOTAL SF



# FLOOR 2

5,604 TOTAL SF



**3960 Red Bank is conveniently located near the I-71 interchange and in proximity to a variety of amenities in Madisonville and Oakley.**

## MADISONVILLE

Madisonville Recreation Center	The Cheesecake Bakery & Coffee Shop
Madison Bowl	Mad Llama Coffee Shop
Mazunte Taqueria	Red Sesame
Bee's Barbecue	Millie's Place
Wendy's	Bad Tom Smith Brewing
Taco Bell	Element Eatery
Rally's	Placebo
Izzy's	The Summit Hotel
Biggby Coffee	Holiday Inn

## OAKLEY

Esporta	Chick-fil-a	Genki Ramen & Izakaya
Planet Fitness	Rasing Cane's	Wild Eggs
Crunch Fitness	MadTree Brewing	Jimmy John's
Orangetheory	Wingstop	Chicken Salad Chick
Target	Smoothie King	Tropical Smoothie Cafe
Meijer	Olive Garden	Starbucks
Kroger	Wings and Rings	Crumbl Cookies
At Home	Mi Cozumel	McAlister's Deli
PetSmart	MOD Pizza	Condado Tacos
Dollar Tree	Nektr Juice Bar	Holtman's Donuts
Cinemark	Tom & Chee	+ more!



OAKLEY

MADISONVILLE





## DIGGER DALEY

Senior Director

[digger.daley@cushwake.com](mailto:digger.daley@cushwake.com)

+1 513 763 3028

[cincyofficeadvisors.com](http://cincyofficeadvisors.com)



©2025 Cushman & Wakefield. All rights reserved. The information contained in this communication is strictly confidential. This information has been obtained from sources believed to be reliable but has not been verified. NO WARRANTY OR REPRESENTATION, EXPRESS OR IMPLIED, IS MADE AS TO THE CONDITION OF THE PROPERTY (OR PROPERTIES) REFERENCED HEREIN OR AS TO THE ACCURACY OR COMPLETENESS OF THE INFORMATION CONTAINED HEREIN, AND SAME IS SUBMITTED SUBJECT TO ERRORS, OMISSIONS, CHANGE OF PRICE, RENTAL OR OTHER CONDITIONS, WITHDRAWAL WITHOUT NOTICE, AND TO ANY SPECIAL LISTING CONDITIONS IMPOSED BY THE PROPERTY OWNER(S). ANY PROJECTIONS, OPINIONS OR ESTIMATES ARE SUBJECT TO UNCERTAINTY AND DO NOT SIGNIFY CURRENT OR FUTURE PROPERTY PERFORMANCE.