



17,080 - 63,679 SF FOR LEASE

12301

DUPONT  
AVENUE S

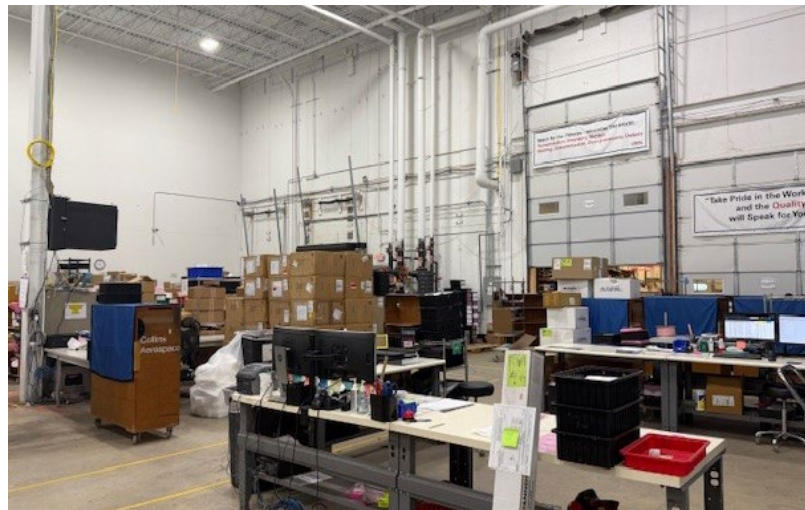
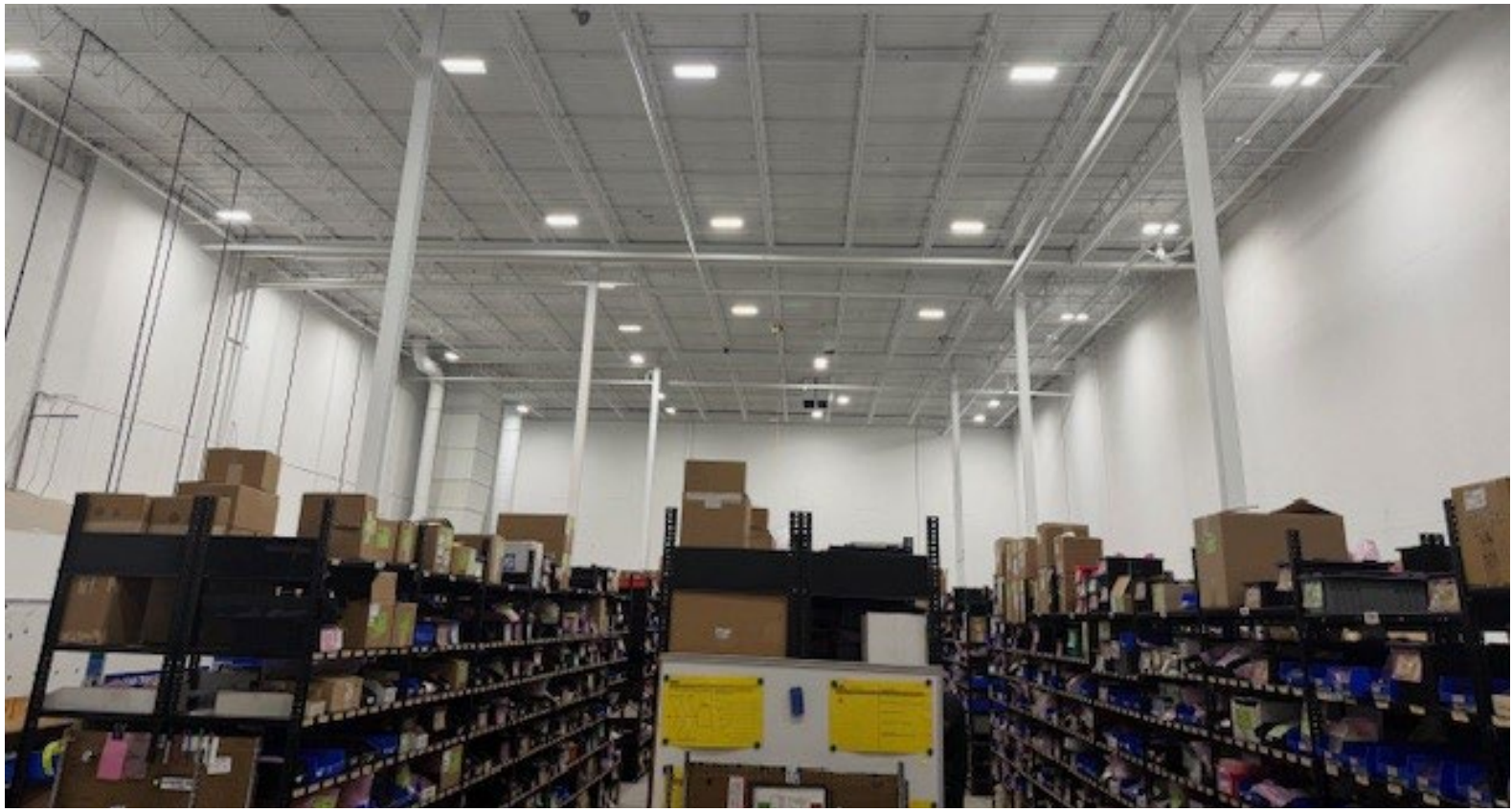
Burnsville, MN



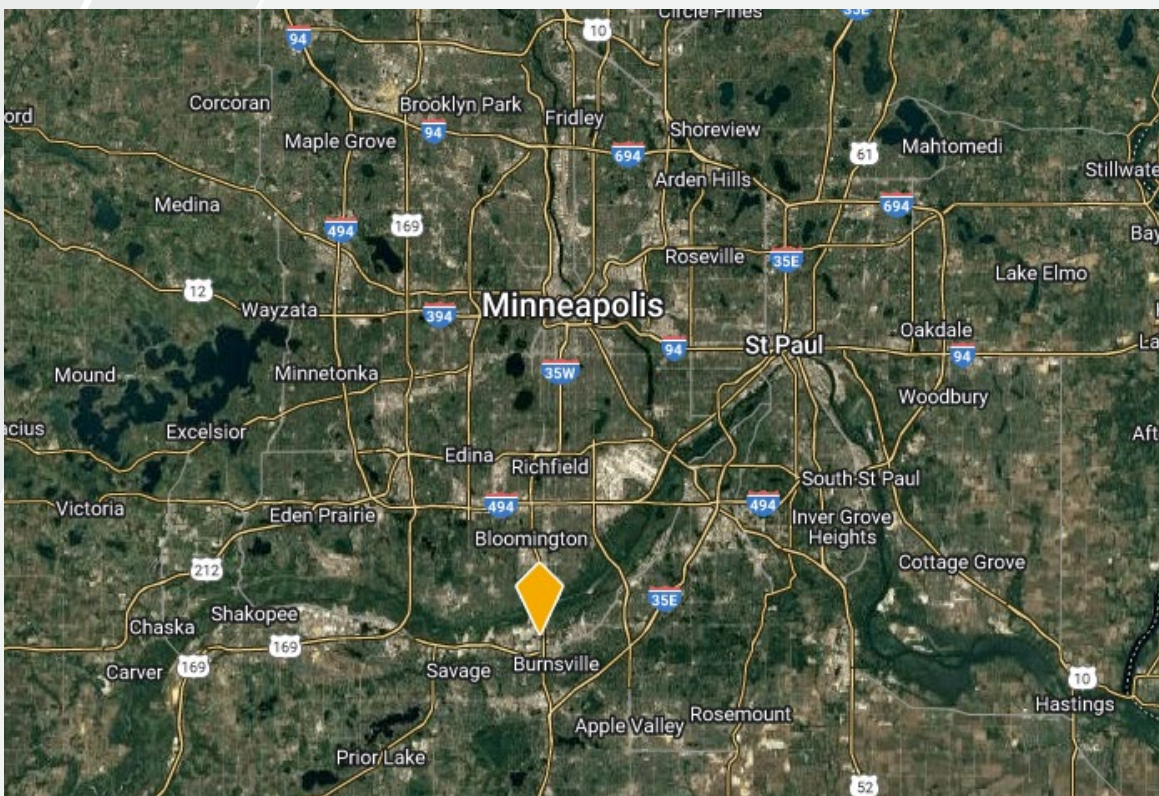
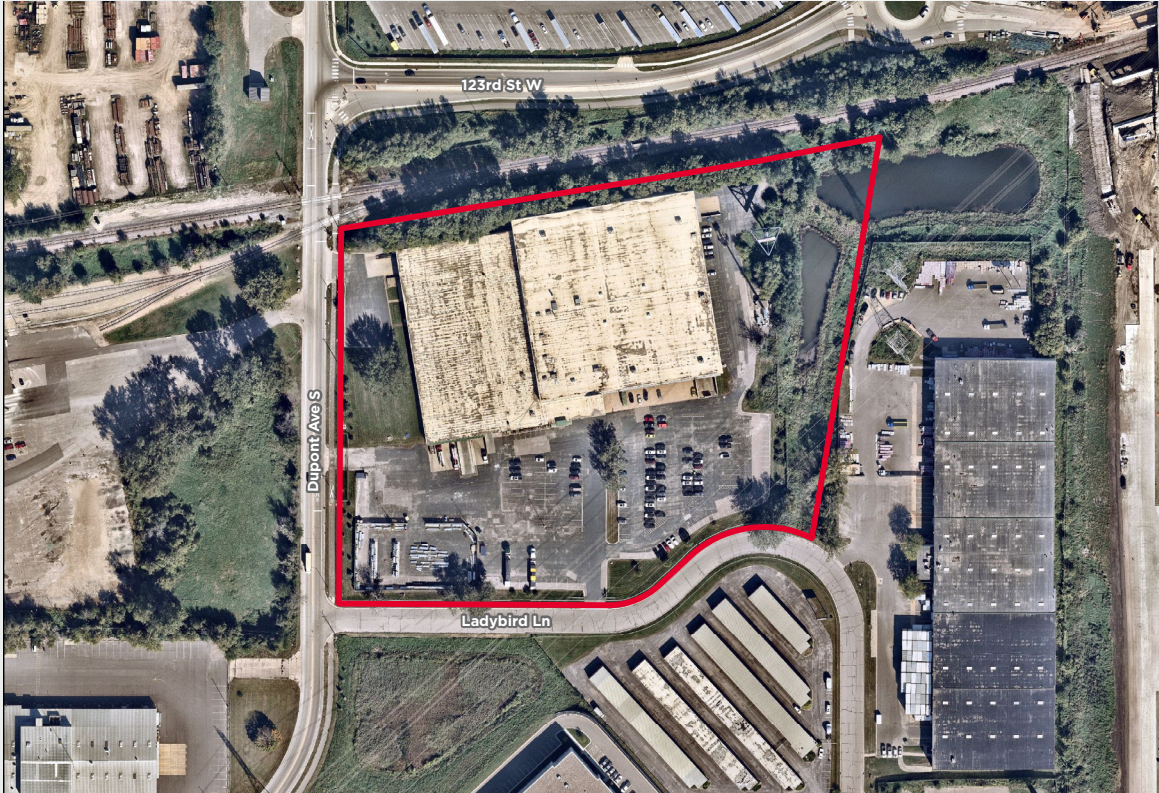


# ABOUT THE PROPERTY

<b>Address</b>	12301 Dupont Ave S, Burnsville, MN
<b>Building Size</b>	177,838 SF
<b>Available Size</b>	1,313 SF Office 10,500 SF 2nd Level Office 51,866 SF Warehouse <b>63,679 SF Total</b>
<b>Land</b>	12.93 acres
<b>Loading</b>	4 Docks 3 Drive-ins
<b>Clear Height</b>	32'
<b>Year Built</b>	1974/1997
<b>Lease Rates</b>	Negotiable
<b>2026 Tax/CAM</b>	TBD



# PROPERTY AERIAL

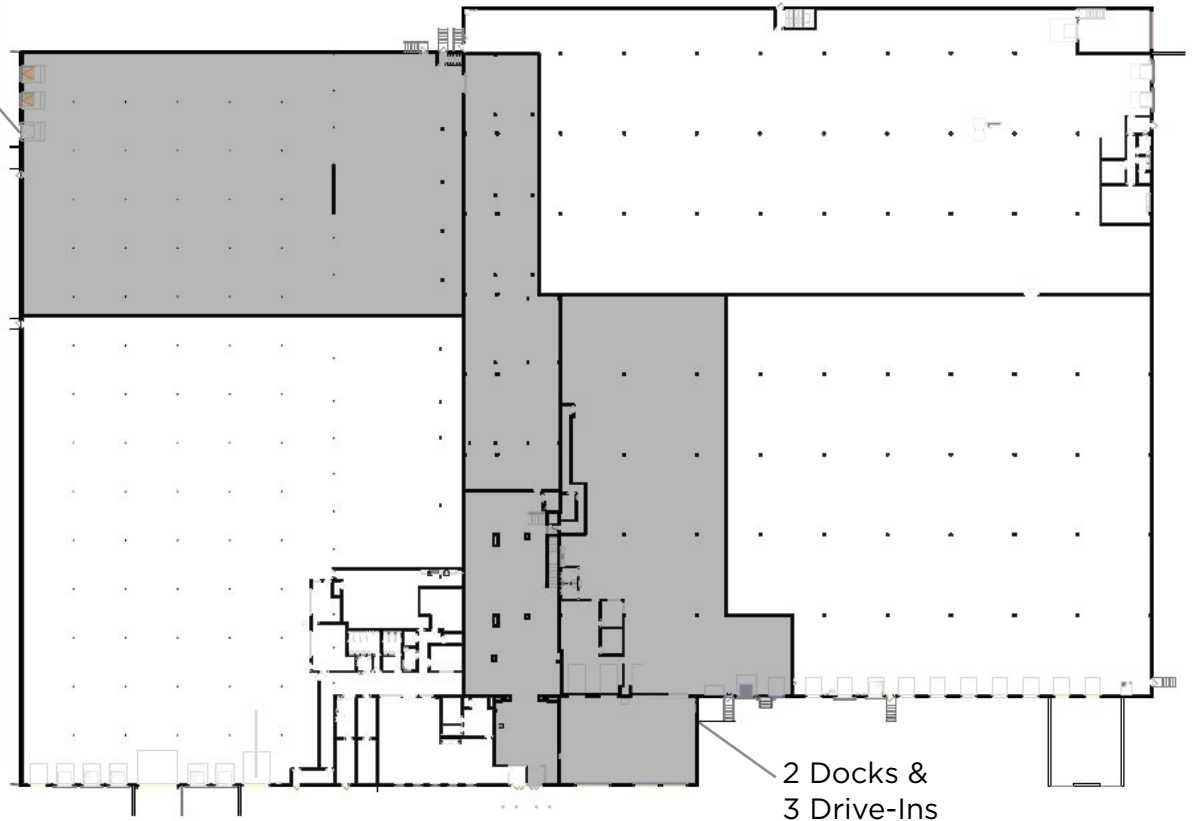


# FLOOR PLAN

2 Docks &  
1 Drive-In



2nd Level Office:  
10,500 SF

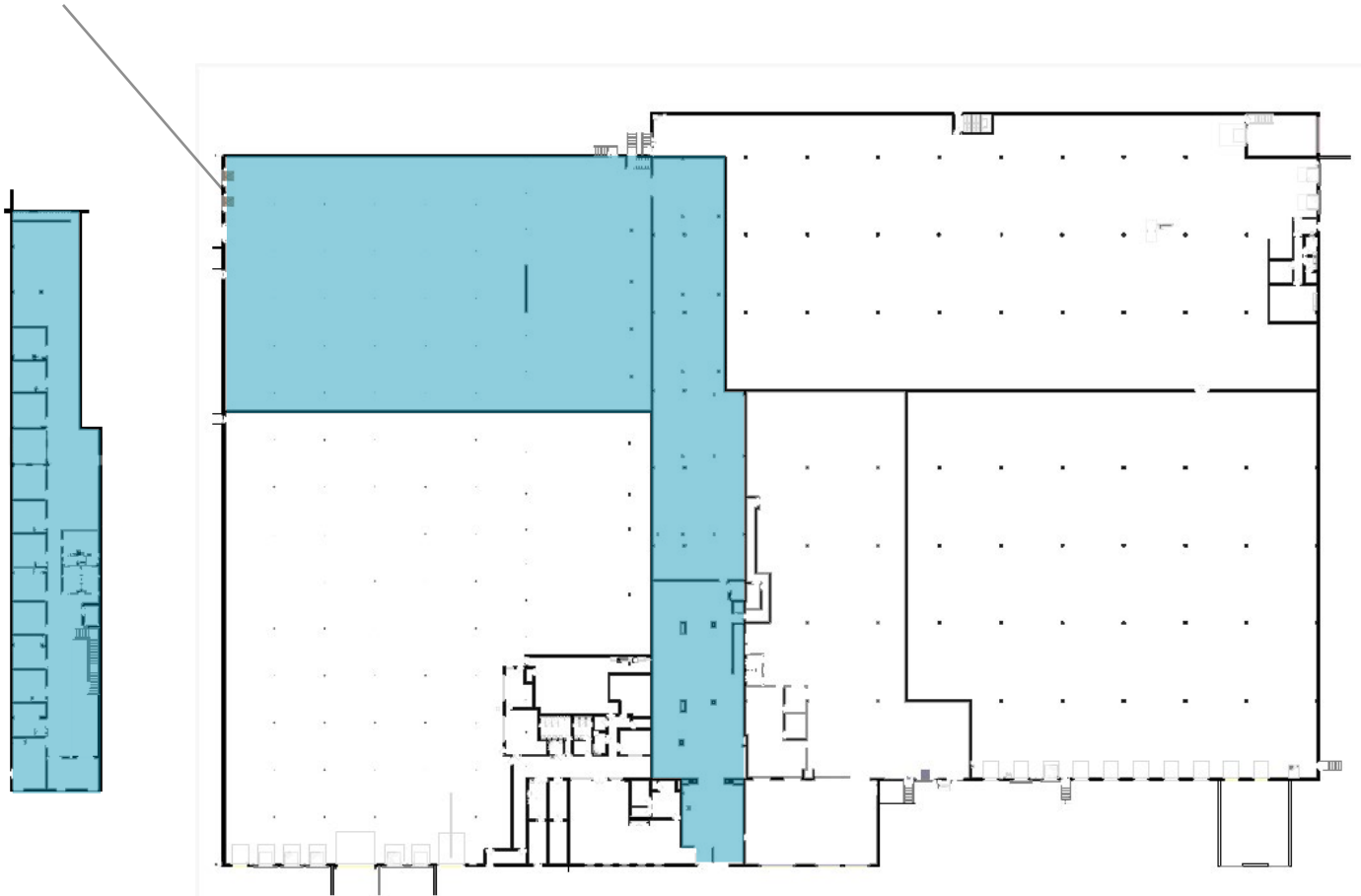


2 Docks &  
3 Drive-Ins

<b>Office</b>	1,313 SF
<b>2nd Level Office</b>	10,500 SF
<b>Warehouse &amp; Production Area</b>	51,866 SF
<b>Total SF</b>	63,679 SF

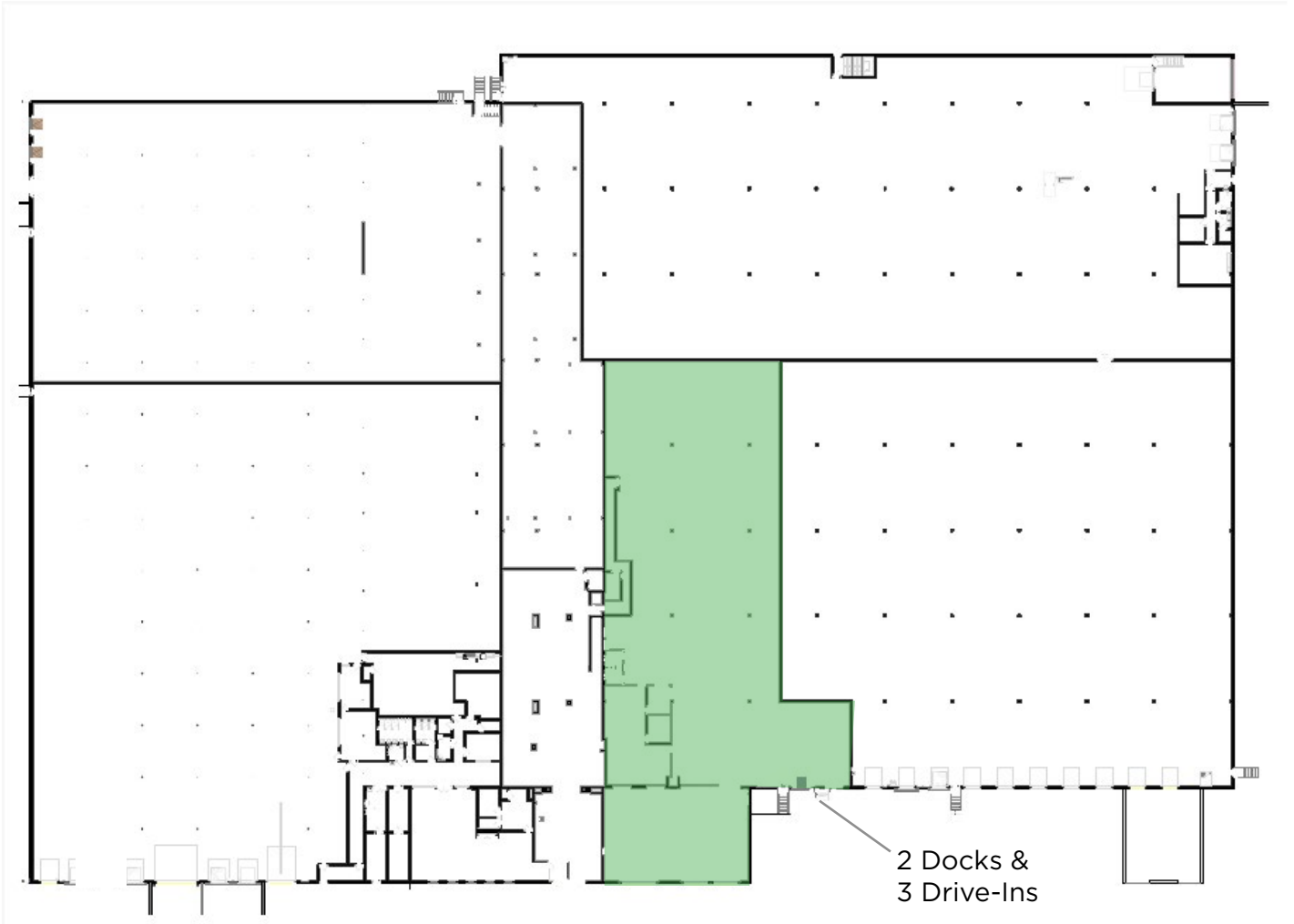
# FLOOR PLAN

2 Docks &  
1 Drive-In



<b>2nd Level Office</b>	10,500 SF
<b>Warehouse &amp; Production Area</b>	36,099 SF
<b>Total SF</b>	46,599 SF

# FLOOR PLAN



<b>Office</b>	1,313 SF
<b>Warehouse &amp; Production Area</b>	15,767 SF
<b>Total SF</b>	17,080 SF



**Danny McNamara**

Managing Director

+1 952 893 8895

[danny.mcnamara@cushwake.com](mailto:danny.mcnamara@cushwake.com)

**Kris Smeltzer**

Executive Managing Director

+1 952 837 8575

[kris.smeltzer@cushwake.com](mailto:kris.smeltzer@cushwake.com)

**Judd Fenlon**

Brokerage Services

+1 612 231 9606

[judd.fenlon@cushwake.com](mailto:judd.fenlon@cushwake.com)

**3500 American Blvd. W**

Suite 200

Bloomington, MN 55413

+1 952 831 1000

**[cushmanwakefield.com](http://cushmanwakefield.com)**