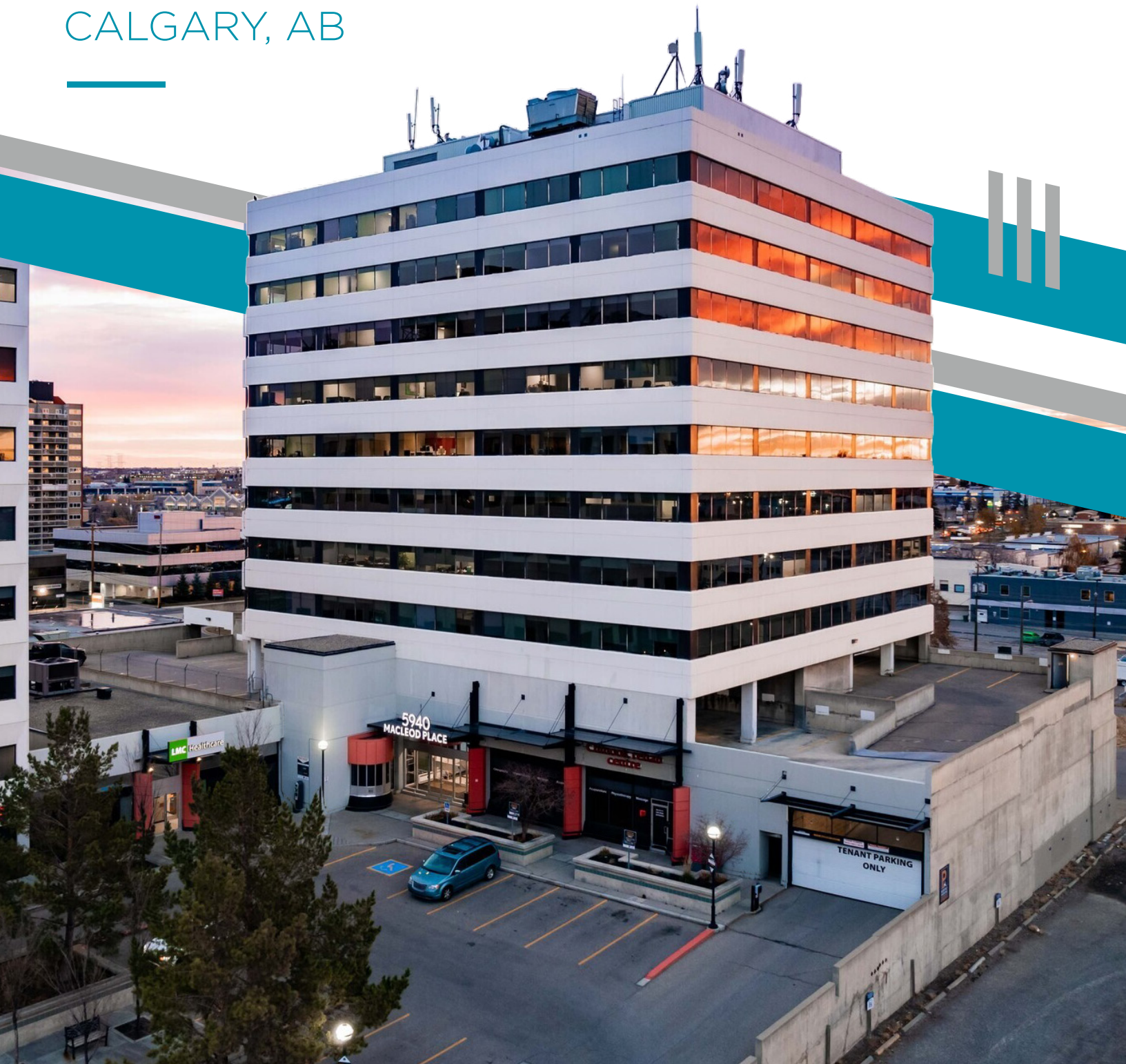


MACLEOD PLACE II

5940 MACLEOD TRAIL SW
CALGARY, AB

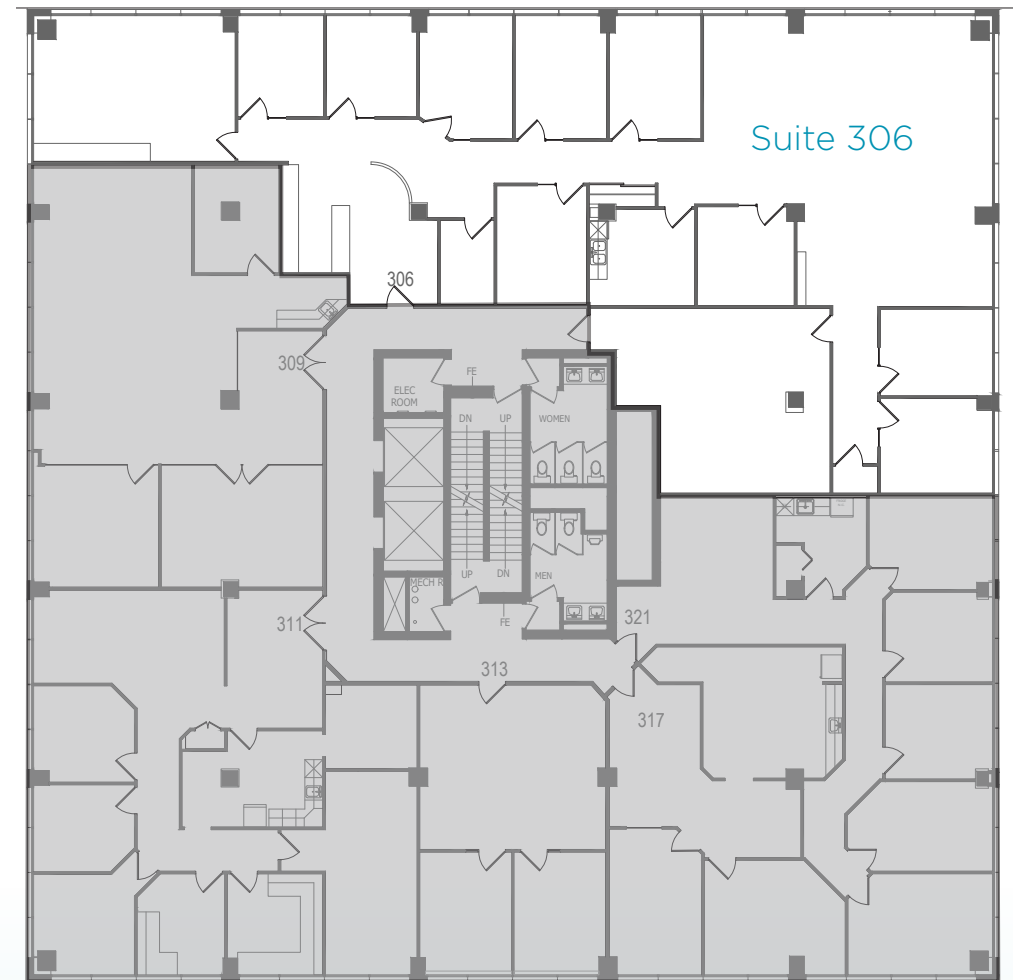




3RD FLOOR

SUITE 306

SUITE 306: 4,682 SF



PROPERTY HIGHLIGHTS

BUILDING DETAILS

Availability: Immediately, except Suite 402: on 60 days' notice

Net Rent: Market rates

Operating Costs: \$16.97 PSF (est. 2026)

Parking: \$165 per stall

Building Size: 80,458 SF

Term: Flexible

AVAILABILITIES

~~Suite 206~~ 5,166 SF **LEASED**

Suite 306 4,682 SF

Suite 401 8,195 SF (Demisable)

Suite 402 2,752 SF

Suite 610 1,500 SF (Approx.)



Conference Facility



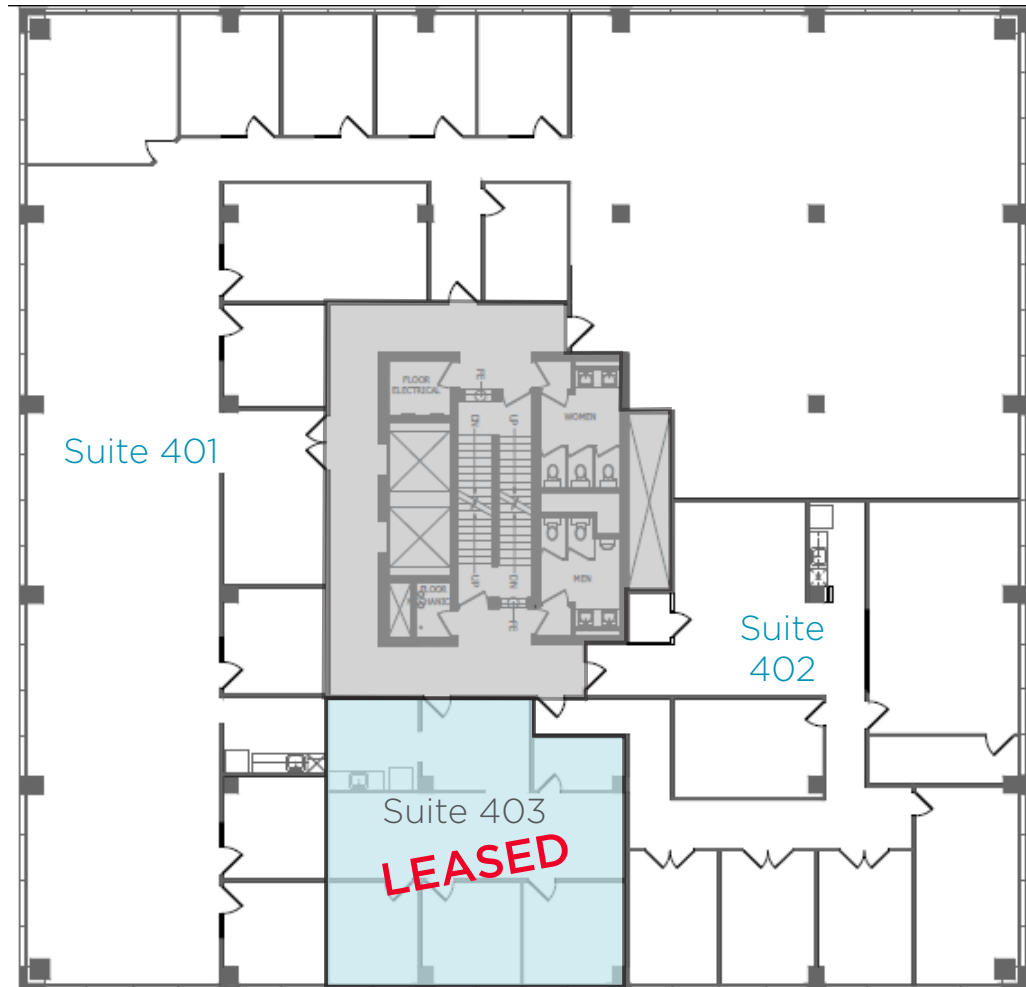
Fitness Facility

4TH FLOOR

SUITE 401 & 402

SUITE 401: 8,195 SF (Demisable)

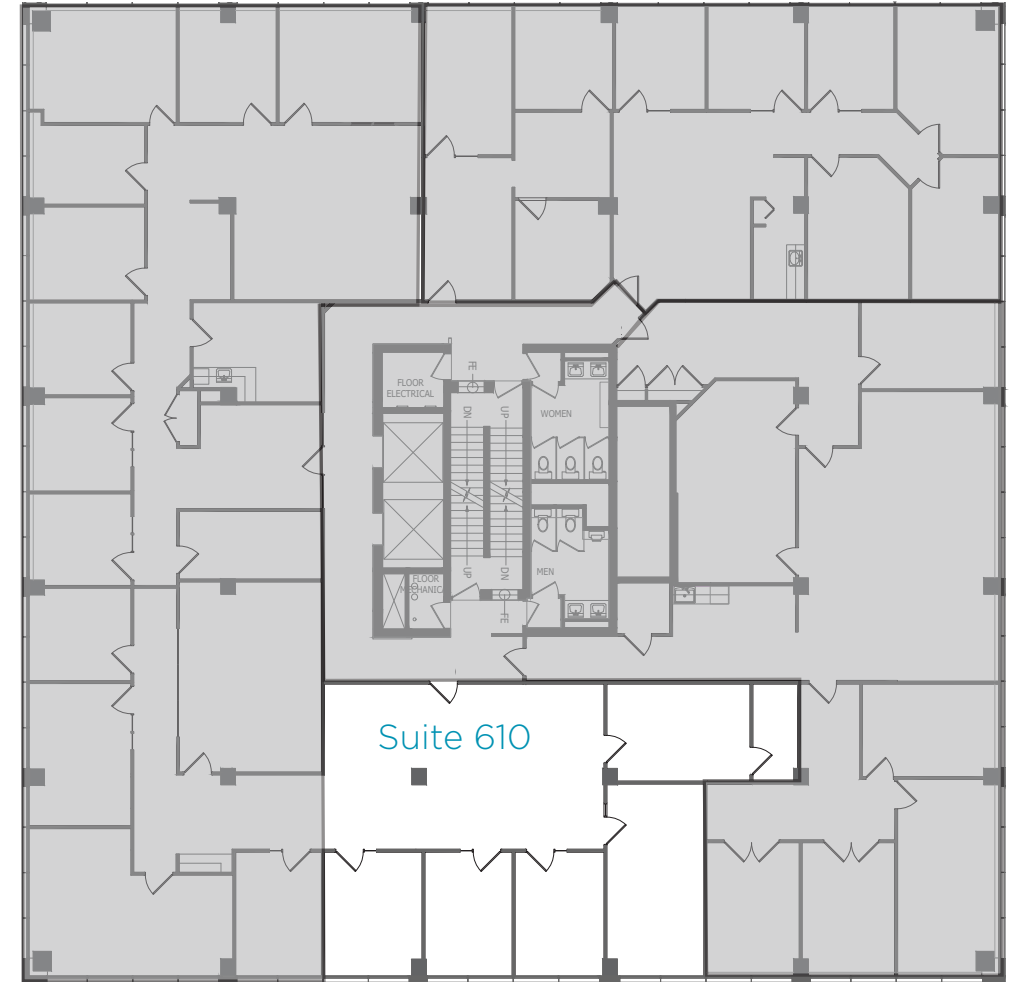
SUITE 402: 2,752 SF



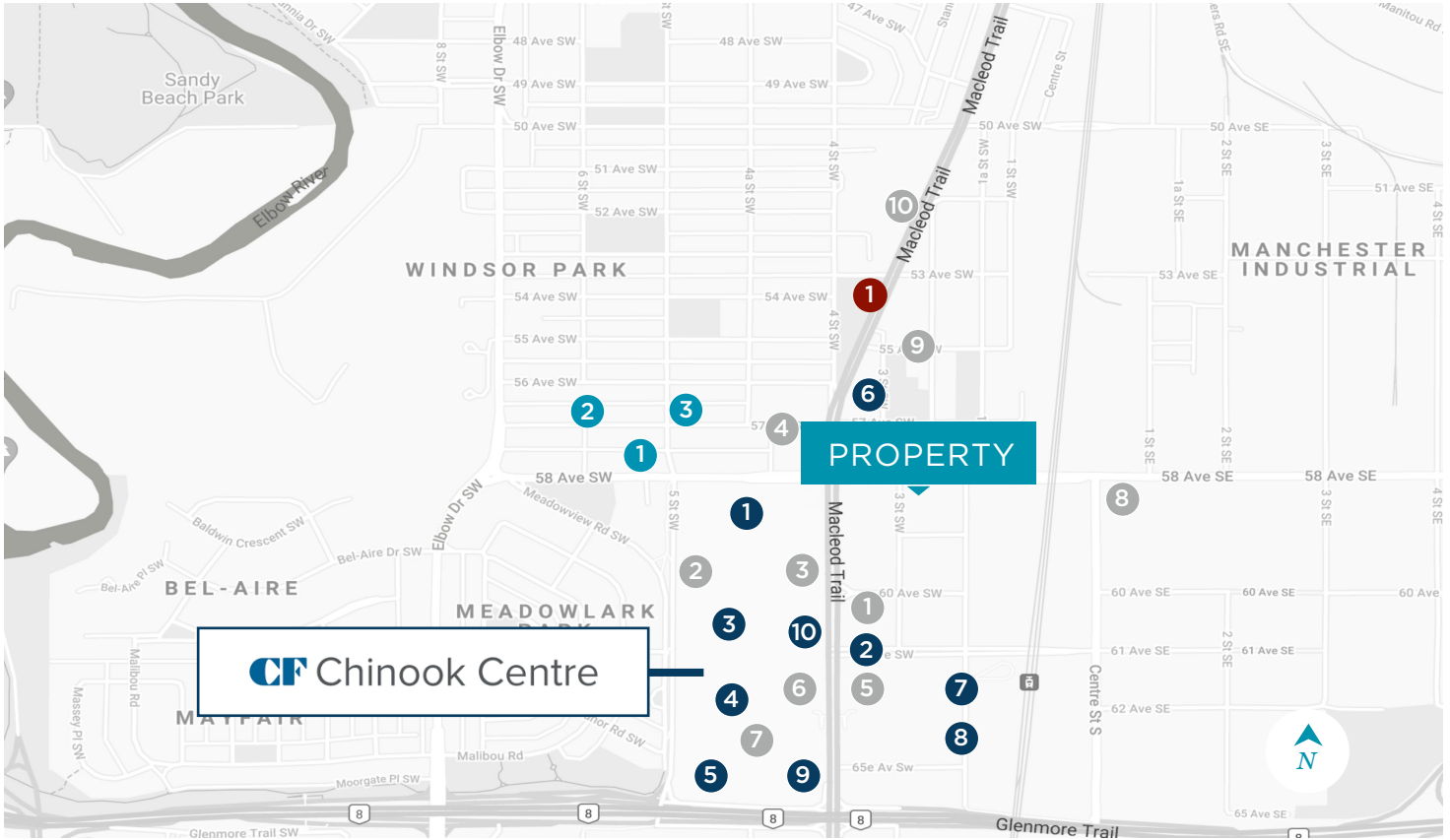
6TH FLOOR

SUITE 610

SUITE 610: 1,500 SF (Approx.)



AREA AMENITIES



RESTAURANTS

1. Ogam Chicken
 2. Tim Hortons
 3. Double Zero
 4. WOW Bakery
 5. Red Lobster
 6. Globefish
 7. JOEY Chinook
 8. Prairie Dog Brewing
 9. Starbucks
 10. Carl's Jr
- *Aloha Kitchen is in the complex*

RETAIL OPTIONS

1. Nordstrom
2. Spirit Leaf
3. Apple
4. Sports Chek
5. Hudson's Bay
6. Silverhill Acura
7. Staples
8. The Home Depot
9. Zara
10. Shoppers Drug Mart

HOTELS

1. Canadas Best Value Inn

MULTI-FAMILY

1. Windsor Place
2. First Assembly Manor
3. Chinook Gardens

CONTACT INFORMATION:

TRENT PETERSON
 Vice President
 Office Sales & Leasing
 D: +1 403 261 1101
 M: +1 403 771 5969
 trent.peterson@cushwake.com

DAVID LEES
 Executive Vice President
 Office Sales & Leasing
 D: 403 261 1102
 M: 403 869 5025
 david.lees@cushwake.com

ADAM RAMSAY
 Executive Vice President
 Office Sales & Leasing
 D: 403 261 1103
 M: 403 660 6390
 adam.ramsay@cushwake.com



Cushman & Wakefield | 250 6 Ave SW, Suite 2400 Calgary, AB T2P 3H7 | cushmanwakefield.com

©2026 Cushman & Wakefield. All rights reserved. The information contained in this communication is strictly confidential. This information has been obtained from sources believed to be reliable but has not been verified. NO WARRANTY OR REPRESENTATION, EXPRESS OR IMPLIED, IS MADE AS TO THE CONDITION OF THE PROPERTY (OR PROPERTIES) REFERENCED HEREIN OR AS TO THE ACCURACY OR COMPLETENESS OF THE INFORMATION CONTAINED HEREIN, AND SAME IS SUBMITTED SUBJECT TO ERRORS, OMISSIONS, CHANGE OF PRICE, RENTAL OR OTHER CONDITIONS, WITHDRAWAL WITHOUT NOTICE, AND TO ANY SPECIAL LISTING CONDITIONS IMPOSED BY THE PROPERTY OWNER(S). ANY PROJECTIONS, OPINIONS OR ESTIMATES ARE SUBJECT TO UNCERTAINTY AND DO NOT SIGNIFY CURRENT OR FUTURE PROPERTY PERFORMANCE.