



FOR LEASE
392 East Winchester Street
Murray, Utah



MARKETED BY
MELINA MIRAMONTES
Director
801 303 5435
melina.miramontes@cushwake.com

JESSE MANGUM
Managing Director
801 303 5547
jesse.mangum@cushwake.com



PROPERTY HIGHLIGHTS

- Suite 106
- 2,094 RSF
- \$25.00/RSF FSG
- Prime location
- Easy access to both I-15 and I-215
- Move-in ready
- Welcoming lobby with beautiful multi-story atrium
- Excellent natural light
- Window lined offices

MARKETED BY

MELINA MIRAMONTES

Director

801 303 5435

melina.miramontes@cushwake.com

JESSE MANGUM

Managing Director

801 303 5547

jesse.mangum@cushwake.com

170 South Main Street, Suite 1600

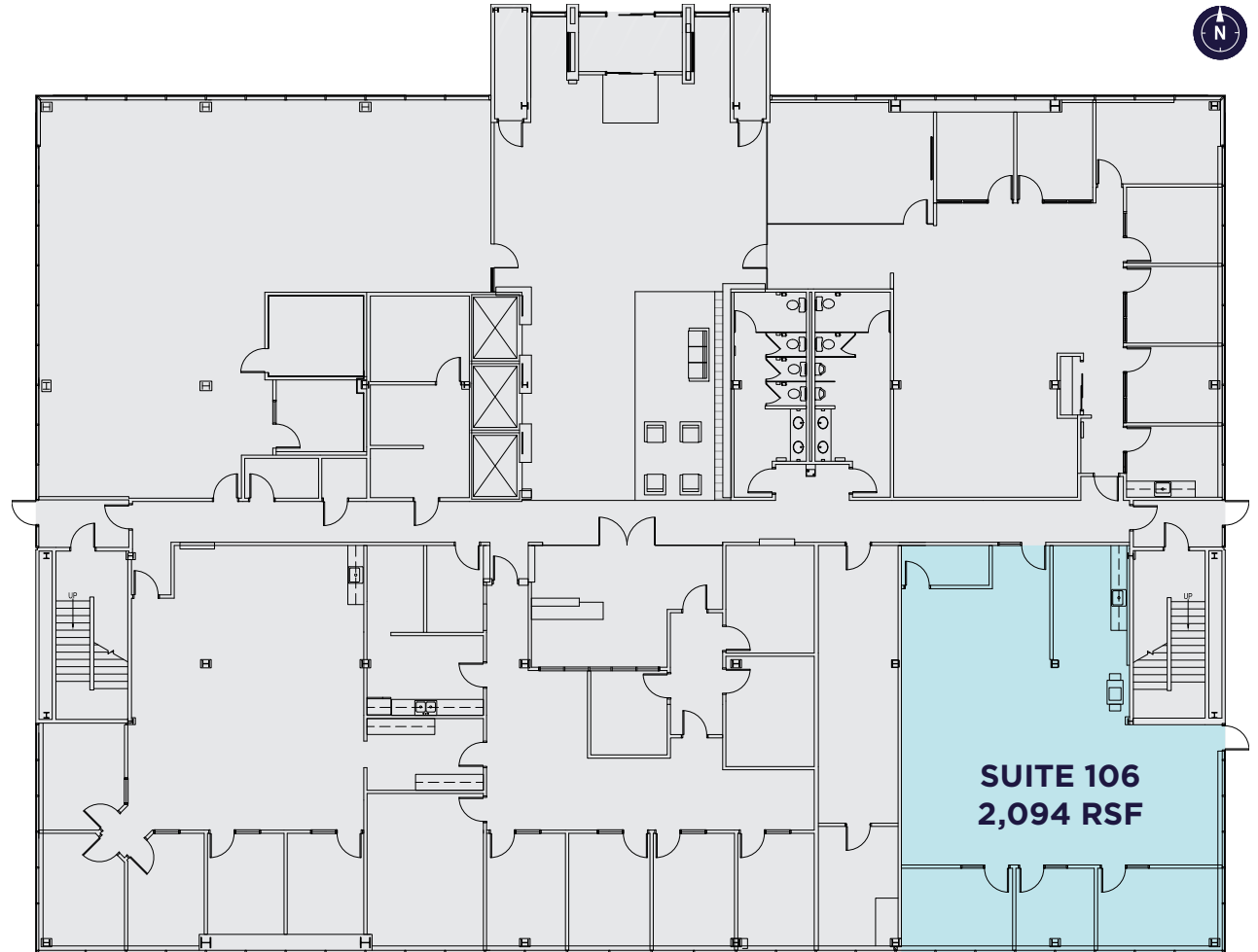
Salt Lake City, UT 84101

+1 801 322 2000

cushmanwakefield.com



©2026 Cushman & Wakefield. All rights reserved. The material in this presentation has been prepared solely for information purposes, and is strictly confidential. Any disclosure, use, copying or circulation of this presentation (or the information contained within it) is strictly prohibited, unless you have obtained Cushman & Wakefield's prior written consent. The views expressed in this presentation are the views of the author and do not necessarily reflect the views of Cushman & Wakefield. Neither this presentation nor any part of it shall form the basis of, or be relied upon in connection with any offer, or act as an inducement to enter into any contract or commitment whatsoever. NO REPRESENTATION OR WARRANTY IS GIVEN, EXPRESS OR IMPLIED, AS TO THE ACCURACY OF THE INFORMATION CONTAINED WITHIN THIS PRESENTATION, AND CUSHMAN & WAKEFIELD IS UNDER NO OBLIGATION TO SUBSEQUENTLY CORRECT IT IN THE EVENT OF ERRORS.



MELINA MIRAMONTES
Director
801 303 5435
melina.miramontes@cushwake.com

JESSE MANGUM
Managing Director
801 303 5547
jesse.mangum@cushwake.com

