



INDEPENDENCE LOGISTICS PARK



150,000 SF AVAILABLE FOR LEASE

**359 OLD UNDERWOOD ROAD | SUITE C
LA PORTE, TX**

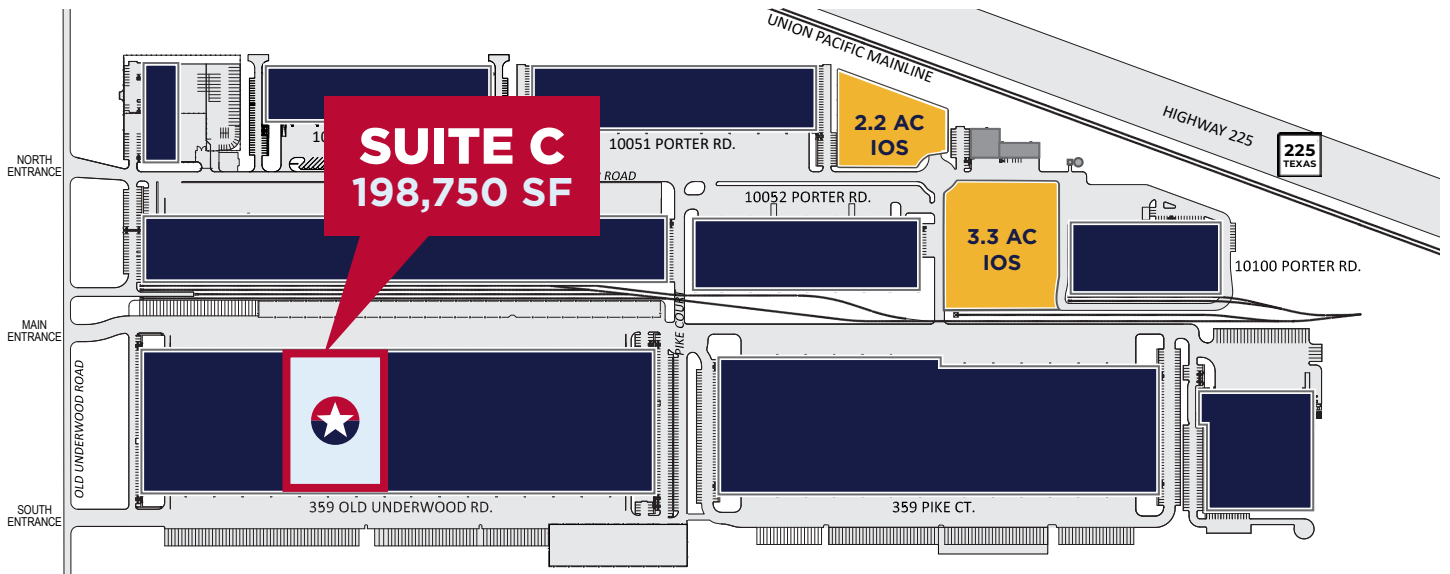
2.2 - 5.5 AC OF IOS AVAILABLE

PROPERTY HIGHLIGHTS

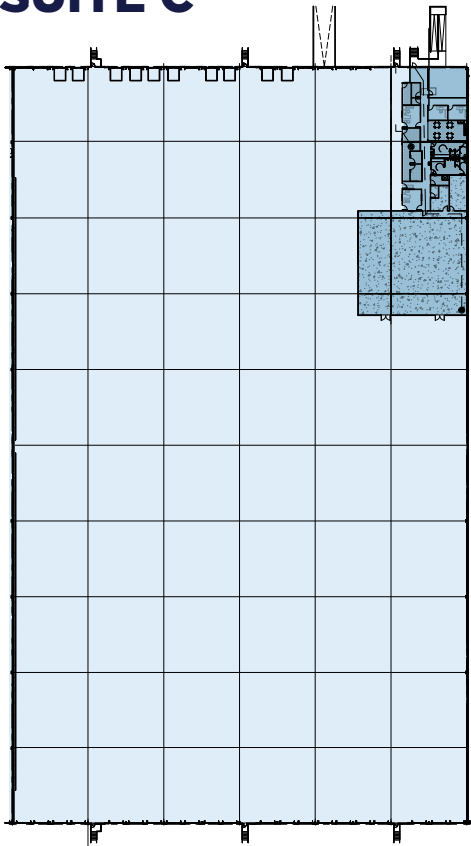
- 150,000 SF Available Total
- Cross-Dock Configuration
- 3,528 SF of Office
- 5,000 SF of Production Area
- 30' Clear Height
- ESFR Sprinkler System
- 38 Dock-High Doors
- 1 Drive-In Ramp
- 50' x 50' Column Spacing
- Trailer Parking (in Addition to IOS)



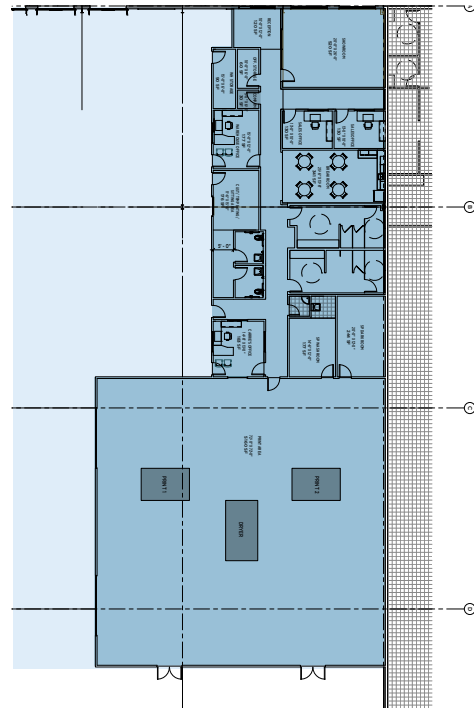
SITE PLAN | AERIAL



SUITE C



OFFICE PLAN



PHOTOS



AREA MAP | MAJOR ACCESS POINTS



BARBOURS CUT | **6 MILES**

DOWNTOWN | **20 MILES**

BAYPORT | **12 MILES**

HOBBY AIRPORT | **15 MILES**

CONTACT

KELLY A. LANDWERMEYER

Managing Director

+1 713 249 4295

kelly.landwermeyer@cushwake.com

DAVID MUNSON

Executive Managing Director

+1 832 545 8204

david.munson@cushwake.com



©2026 Cushman & Wakefield. All rights reserved. The information contained in this communication is strictly confidential. This information has been obtained from sources believed to be reliable but has not been verified. NO WARRANTY OR REPRESENTATION, EXPRESS OR IMPLIED, IS MADE AS TO THE CONDITION OF THE PROPERTY (OR PROPERTIES) REFERENCED HEREIN OR AS TO THE ACCURACY OR COMPLETENESS OF THE INFORMATION CONTAINED HEREIN, AND SAME IS SUBMITTED SUBJECT TO ERRORS, OMISSIONS, CHANGE OF PRICE, RENTAL OR OTHER CONDITIONS, WITHDRAWAL WITHOUT NOTICE, AND TO ANY SPECIAL LISTING CONDITIONS IMPOSED BY THE PROPERTY OWNER(S). ANY PROJECTIONS, OPINIONS OR ESTIMATES ARE SUBJECT TO UNCERTAINTY AND DO NOT SIGNIFY CURRENT OR FUTURE PROPERTY PERFORMANCE.