
FOR SALE

FORMER BANK BRANCH

2,712 SF

Key Features

- 2,712 SF free-standing building on 2.60 acres
- Excellent location adjacent to Trinity Health Reichert Medical Center
- Built in 1978
- Zoned PC - Planned Community District
- Former bank branch with drive-through lanes
- Ample surface parking

Frontage	Land	Total GLA	Asking Price
964 feet	2.60 acres	2,712 SF	\$925,000



Garrett Keais
Executive Managing Director

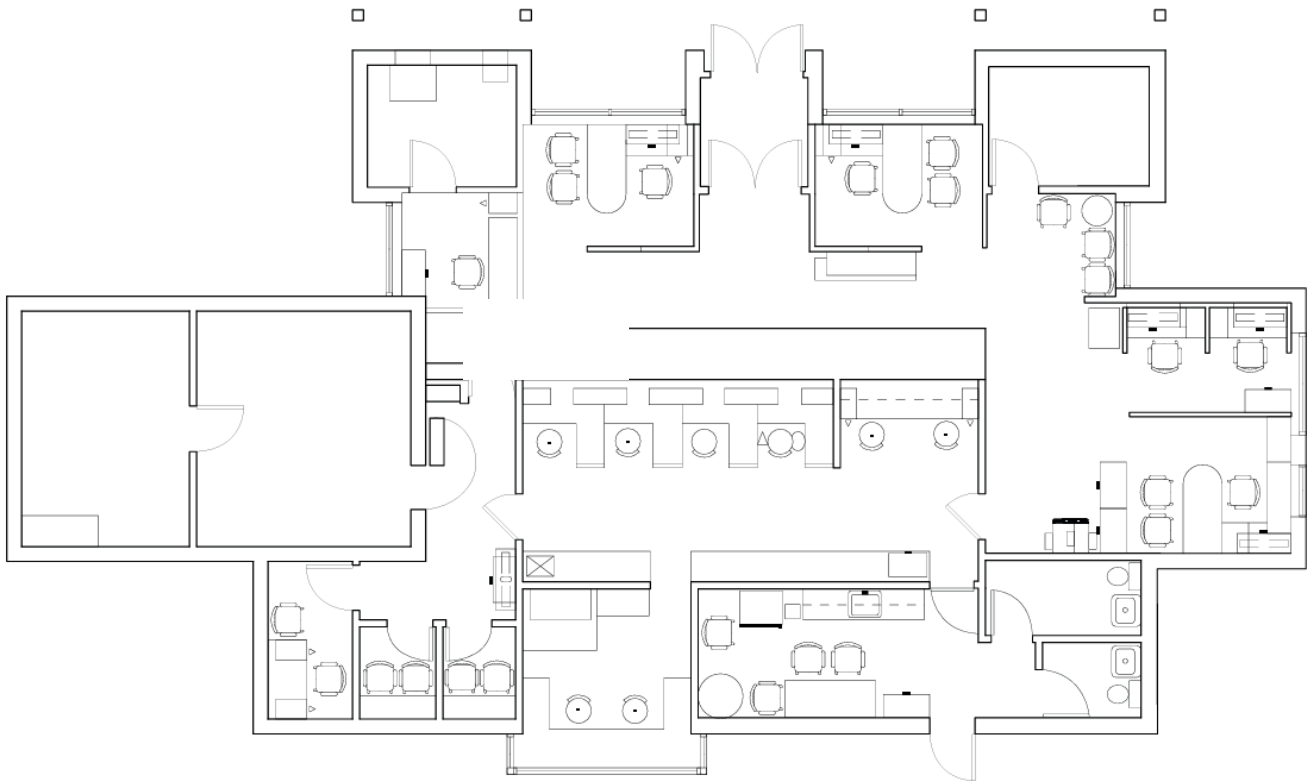
+1 248 358 6112
garrett.keais@cushwake.com

John VanNoord
Director

+1 248 358 6106
john.vannoord@cushwake.com

cushmanwakefield.com

Floor Plan



Garrett Keais
Executive Managing Director
248 358 6112
garrett.keais@cushwake.cm

John VanNoord
Director
248 358 6106
john.vannoord@cushwake.com

cushmanwakefield.com