

MAPLE VILLAGE



10117-10190 MAPLE STREET | OMAHA, NE 68134

RETAIL SPACE FOR LEASE | 1,400-7,944 SF



PROPERTY DETAILS

Maple Village is a well-located retail strip center offering flexible suite sizes for lease. Positioned at the corner of North 102nd Street and Maple Street. Maple Village provides excellent visibility and easy access from Interstate 680. Surround your business with strong neighboring tenants such as Scooters coffee, Caseys, Valentino's and other established retailers.

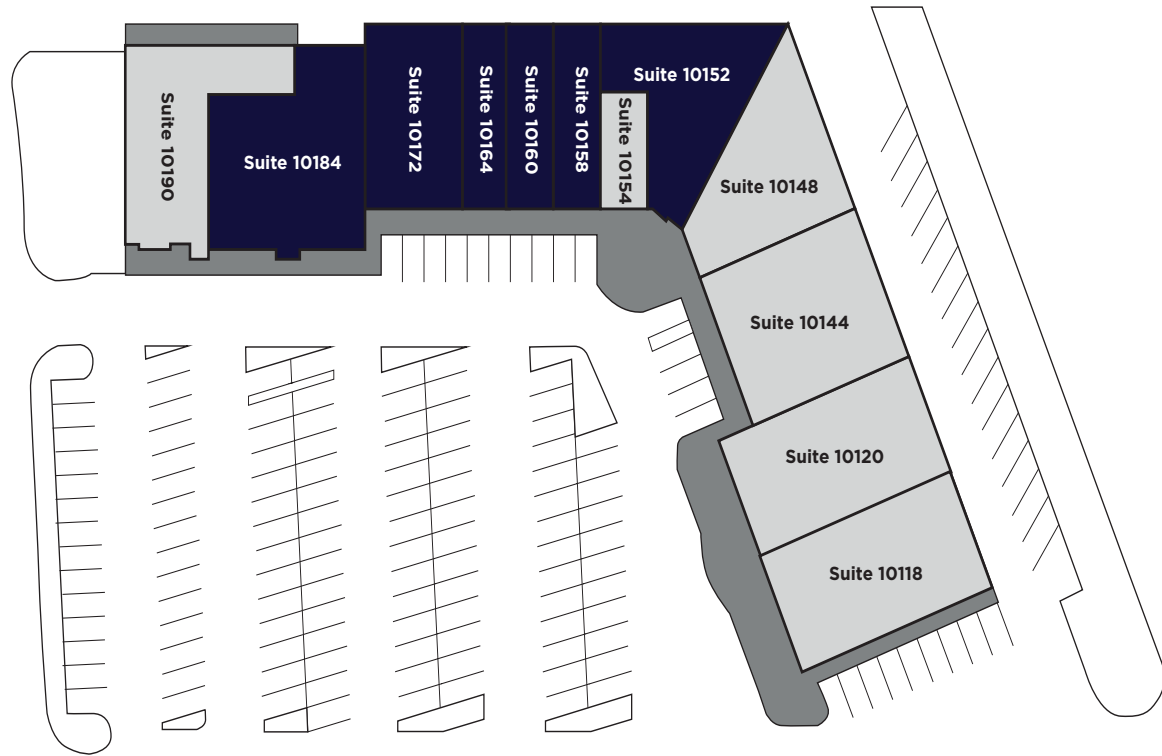
PROPERTY HIGHLIGHTS

Lease Rate	\$15.00/SF NNN
NNN Expenses	\$4.34/SF
Total Available	15,149 SF
Building Size	42,500 SF
Year Built/Renovated	1982/2008
Total Site Area	3.76 AC
Zoning	CC - Community Commercial
Parking Ratio	3.82/1,000






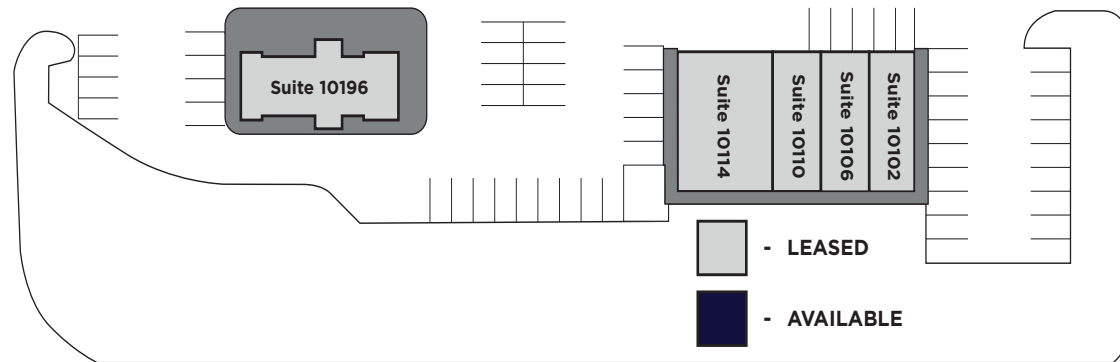
AVAILABILITY

SUITE	SF	TENANTS
10196	1,915	Scooters
10190	2,978	Valentino's
10184	5,233 - 7,944	AVAILABLE
10172	2,711 - 7,944	AVAILABLE
10164	1,400	AVAILABLE
10160	1,400	AVAILABLE
10158	1,400	AVAILABLE
10154	661	The Light Hair Braiding
10152	3,005	AVAILABLE
10148	3,300	North Shore Tavern
10144	4,200	Bernina Sewing
10120	3,995	Habitz Glass & Goodies
10118	3,995	Exodus Athletic Club
10114	2,120	Malbar Vision
10110	950	Jack's Tailor
10106	1,130	Tranquil Wellness
10102	1,060	Bruening Chiropractic



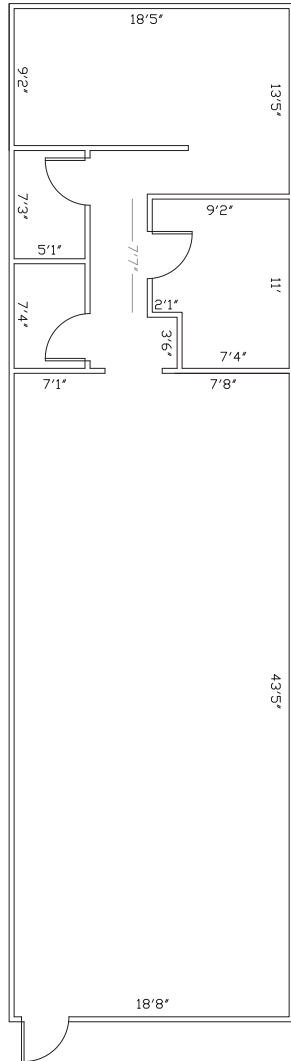
DEMOGRAPHICS

	 POPULATION	 MEDIAN HOUSEHOLD INCOME	 NUMBER OF HOUSEHOLDS
1 Mile	14,875	\$60,702	7,546
3 Mile	96,458	\$75,281	45,309
5 Mile	248,832	\$79,865	111,341

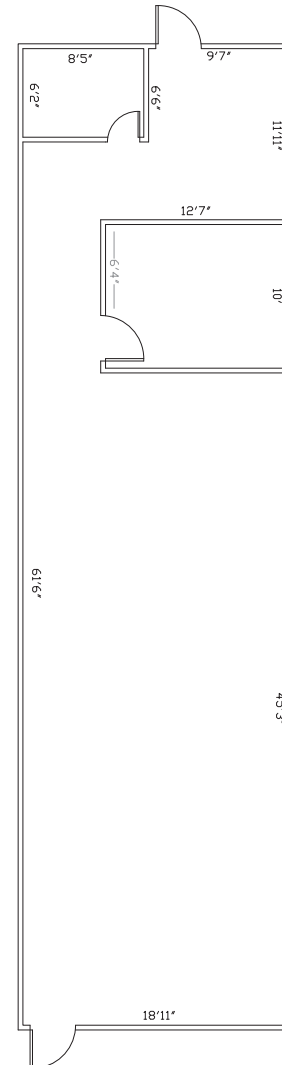


 - LEASED
 - AVAILABLE

FLOOR PLANS



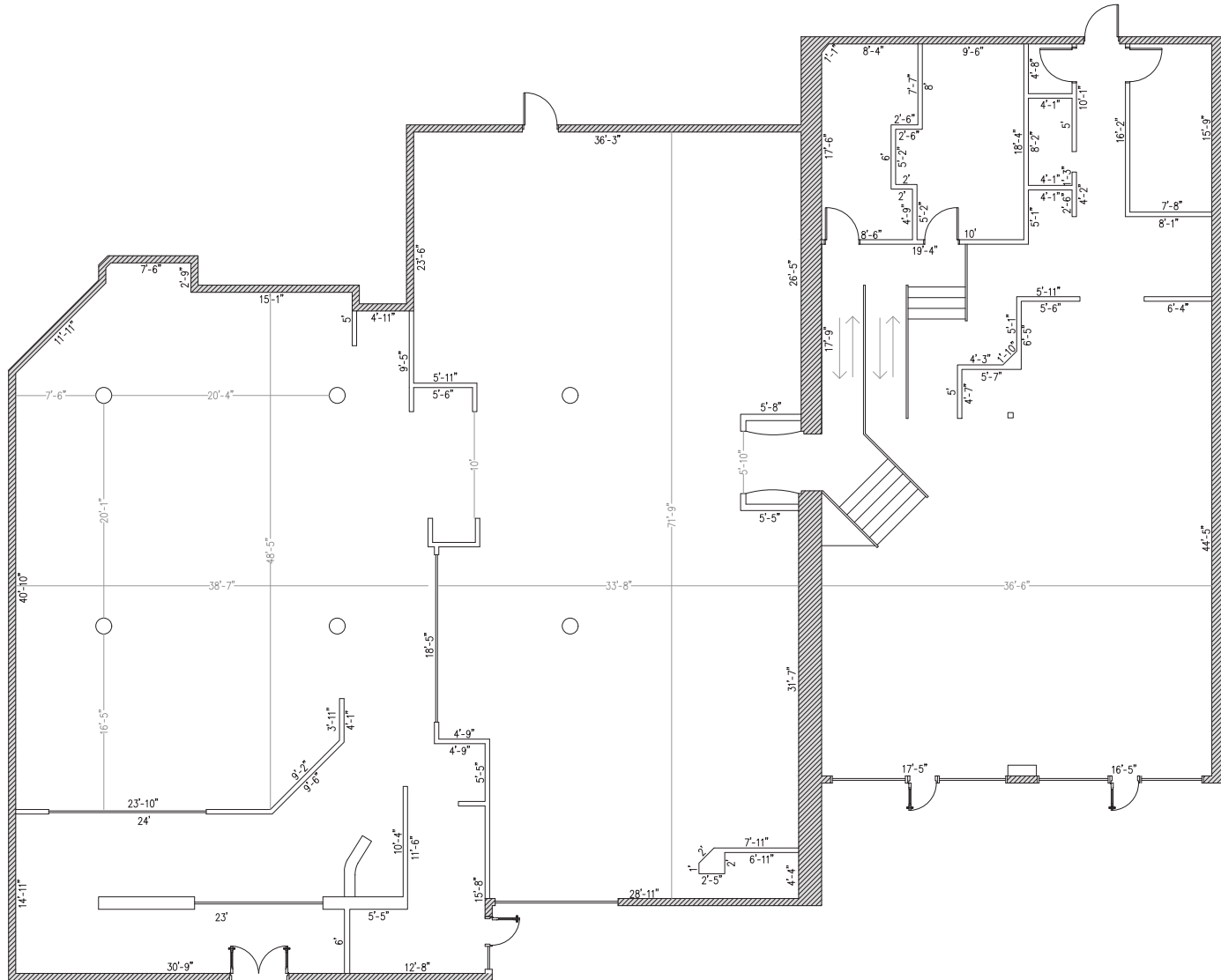
SUITE 10160 | 1,400 SF



SUITE 10164 | 1,400 SF



FLOOR PLANS

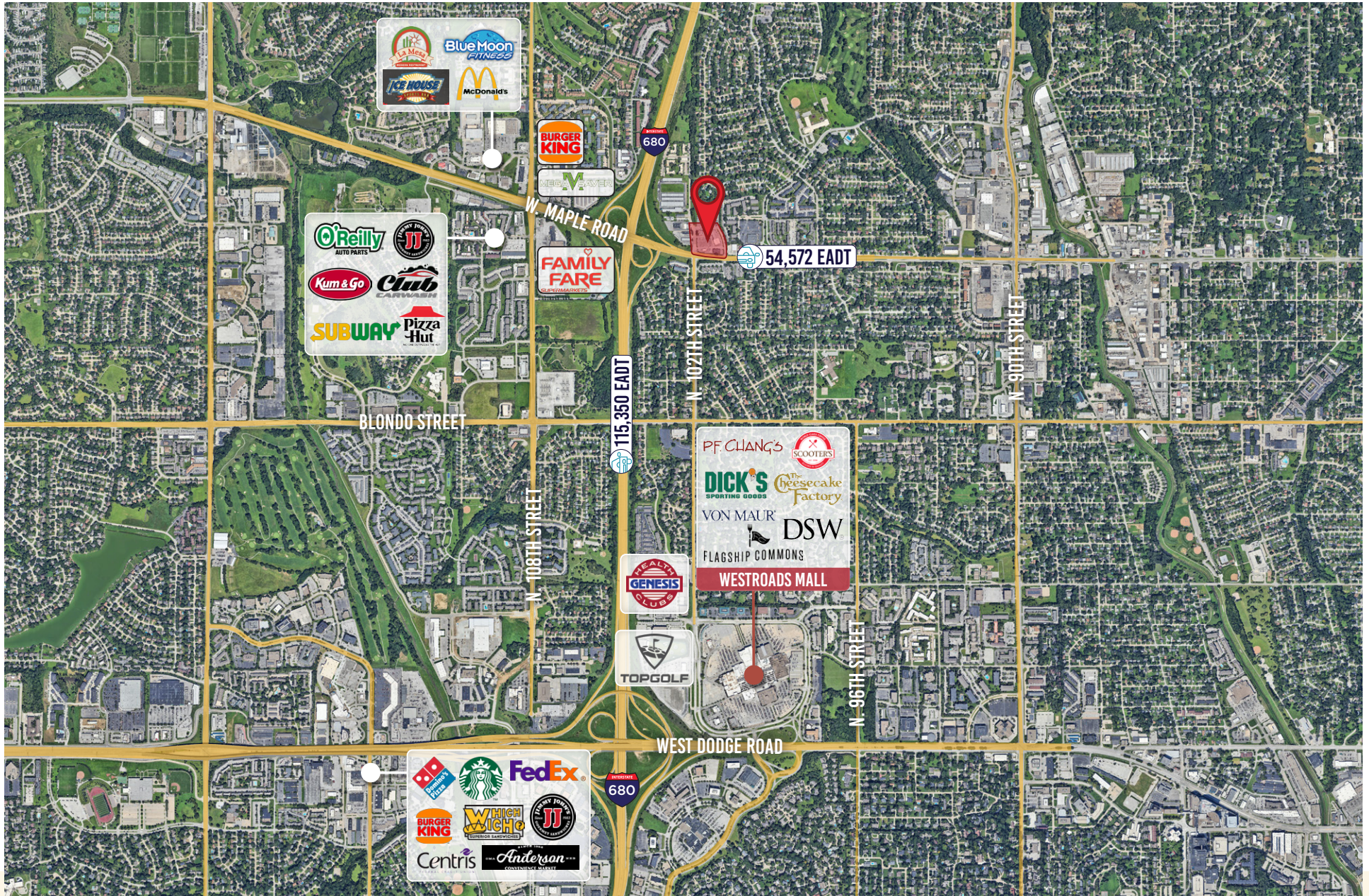


SUITE 10171 - SUITE 10184 | 2,711 - 7,944 SF

PROPERTY PHOTOS



AERIAL MAP





CONTACT

Trey MacKnight
Senior Associate
402.548.4079
trey.macknight@lundco.com

Holly Jones
Director of Retail Services
+1 402 548 4038
holly.jones@lundco.com

Independently Owned and Operated / A Member of the Cushman & Wakefield Alliance

©2025 Cushman & Wakefield. All rights reserved. The information contained in this communication is strictly confidential. This information has been obtained from sources believed to be reliable but has not been verified. NO WARRANTY OR REPRESENTATION, EXPRESS OR IMPLIED, IS MADE AS TO THE CONDITION OF THE PROPERTY (OR PROPERTIES) REFERENCED HEREIN OR AS TO THE ACCURACY OR COMPLETENESS OF THE INFORMATION CONTAINED HEREIN, AND SAME IS SUBMITTED SUBJECT TO ERRORS, OMISSIONS, CHANGE OF PRICE, RENTAL OR OTHER CONDITIONS, WITHDRAWAL WITHOUT NOTICE, AND TO ANY SPECIAL LISTING CONDITIONS IMPOSED BY THE PROPERTY OWNER(S). ANY PROJECTIONS, OPINIONS OR ESTIMATES ARE SUBJECT TO UNCERTAINTY AND DO NOT SIGNIFY CURRENT OR FUTURE PROPERTY PERFORMANCE.