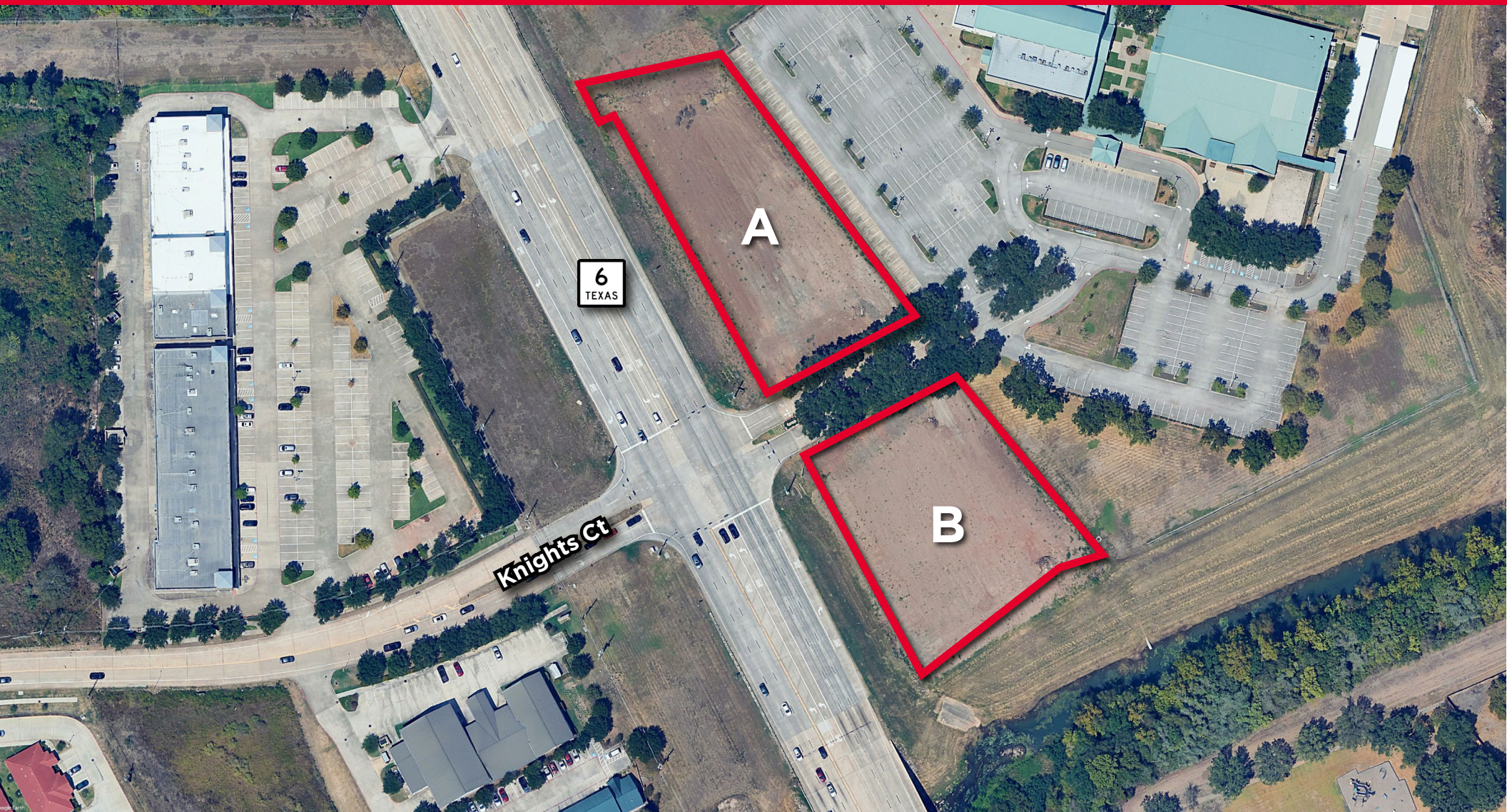


PAD SITES

HWY 6 & KNIGHTS CT, MISSOURI CITY, TX 77459



KRISTEN MCDADE
Managing Director
+1 713 331 1796
kristen.mcdade@cushwake.com

MATTHEW DAVIS
Senior Director
+1 713 331 1798
matthew.davis@cushwake.com

MELISSA ELIZONDO
Brokerage Specialist
+1 346 396 4008
melissa.elizondo@cushwake.com

**CLICK TO VIEW
PROPERTY
VIDEO**



2026

GREATER HOUSTON MARKETPLACE

WHY HOUSTON

6.8M

Residents in the City of Houston

28

Fortune 500 Companies

#3

among US Metro Areas in Fortune 500 Headquarters

#5

in the US in Fortune 1000 headquarters

55M sq ft

of Class A space

275k

Business establishments in Houston's MSA

4th

Largest U.S. City

+ At 665 square miles, the City of Houston is larger in area than the cities of Chicago, Dallas, Los Angeles, New York, Phoenix and San Diego.

#2

Fastest growing MSA in the U.S.

+ 3,360,800 Jobs in Houston MSA

GLOBAL TRADE CITY

1st

in Foreign Waterborne Tonnage

1st

in Gulf Coast Container Port

1st

in Import and Export

73

Foreign Owned Firms

DEMOGRAPHICS

within 3 miles of Hwy 6 & Knights Ct, Missouri City, TX



77,297

2025 Total Population



\$157,307

2025 Average Household Income



\$479,220

2025 Average Home Value

MAJOR LEAGUE SPORTS TEAMS



ENERGY CAPITAL OF THE WORLD



PORT OF HOUSTON



WORLD'S LARGEST MEDICAL CENTER



NASA

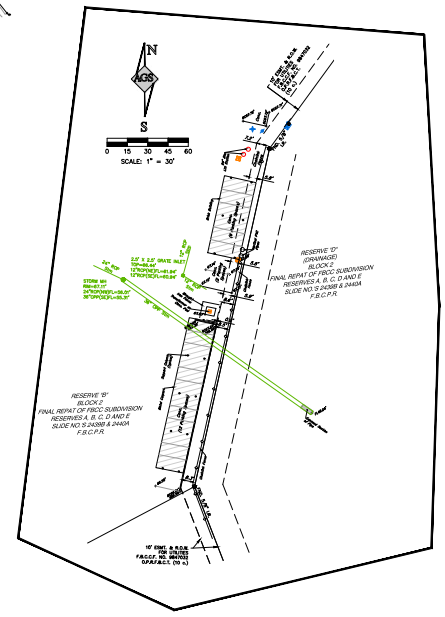
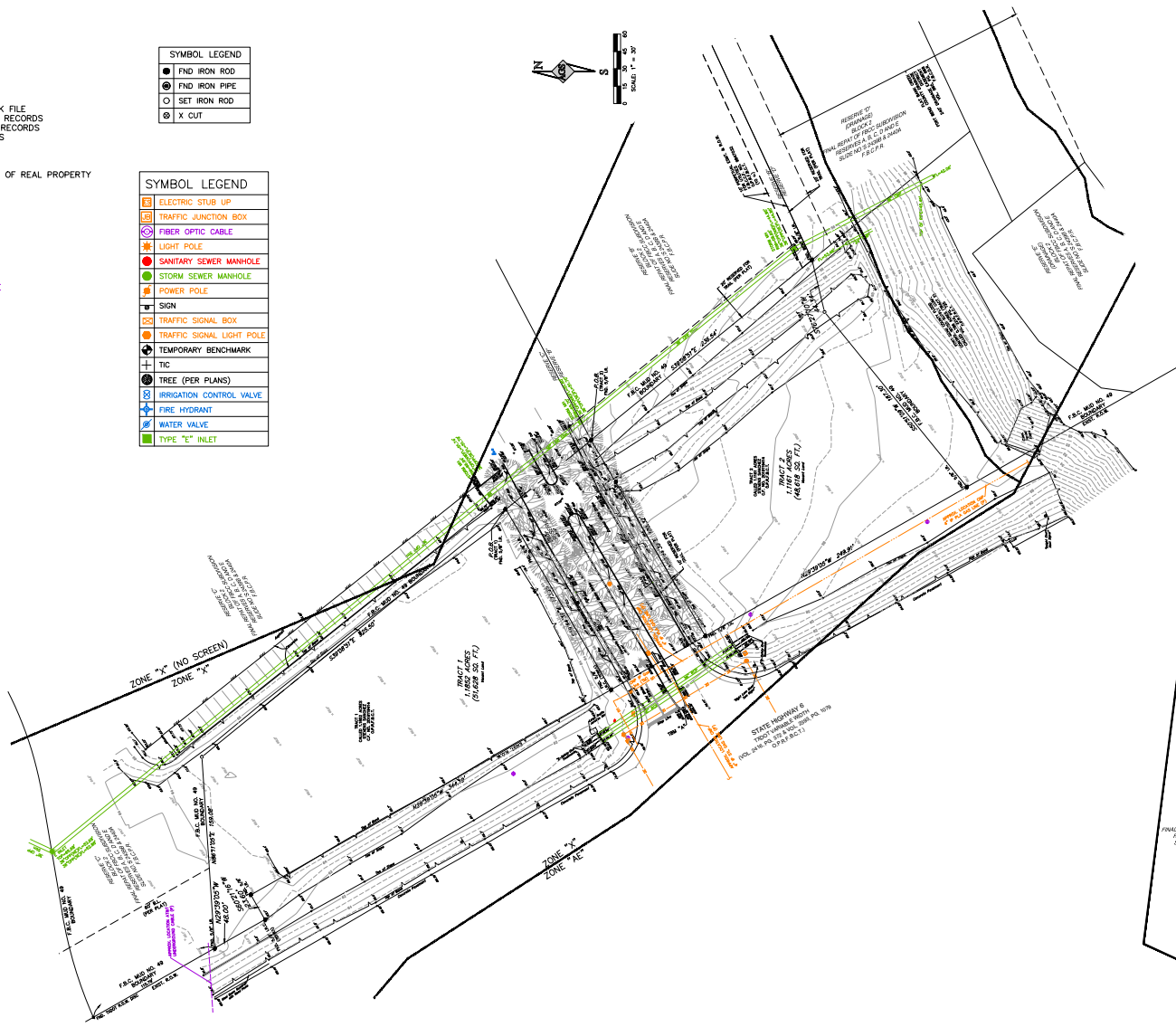
CLUTCH CITY

LEGEND	
B.L.	BUILDING LINE
B.M.	BENCHMARK
ESMT.	EASEMENT
FL	FLOW LINE
FND	FOUND
F.B.C.C.F.	FORT BEND COUNTY CLERK FILE
F.B.C.D.R.	FORT BEND COUNTY DEED RECORDS
F.B.C.M.R.	FORT BEND COUNTY MAP RECORDS
F.B.C.T.	FORT BEND COUNTY TEXAS
I.R.	IRON ROD
I.R.C.	IRON ROD CAPPED
I.P.	IRON PIPE
O.P.R.R.P.	OFFICIAL PUBLIC RECORDS OF REAL PROPERTY
P.O.B.	POINT OF BEGINNING
P.O.C.	POINT OF COMMENCING
P.C.	PAGE
R.O.W.	RIGHT-OF-WAY
SAN. SWR.	SANITARY SEWER
STM.	STORM
STM. SWR.	STORM SEWER
SW	SIDEWALK
VOL.	VOLUME
-OE-	ELECTRIC OVERHEAD
-UG-	UNDERGROUND GAS
-UT-	UNDERGROUND TELEPHONE
-UC-	UNDERGROUND CABLE
--//--	WOOD FENCE
--X--	BARBED WIRE FENCE
- - -	CHAIN LINK FENCE
- - -	HIGH BANK

SYMBOL LEGEND	
●	FND IRON ROD
⊙	FND IRON PIPE
○	SET IRON ROD
⊗	X CUT

SYMBOL LEGEND	
⊞	ELECTRIC STUB UP
⊞	TRAFFIC JUNCTION BOX
⊞	FIBER OPTIC CABLE
⊞	LIGHT POLE
⊞	SANITARY SEWER MANHOLE
⊞	STORM SEWER MANHOLE
⊞	POWER POLE
⊞	SIGN
⊞	TRAFFIC SIGNAL BOX
⊞	TRAFFIC SIGNAL LIGHT POLE
⊞	TEMPORARY BENCHMARK
+	TIC
⊞	TREE (PER PLANS)
⊞	IRRIGATION CONTROL VALVE
⊞	FIRE HYDRANT
⊞	WATER VALVE
⊞	TYPE "E" INLET

UTILITIES LEGEND	
■	CABLE
■	ELECTRIC
■	GAS
■	TELEPHONE
■	WATER



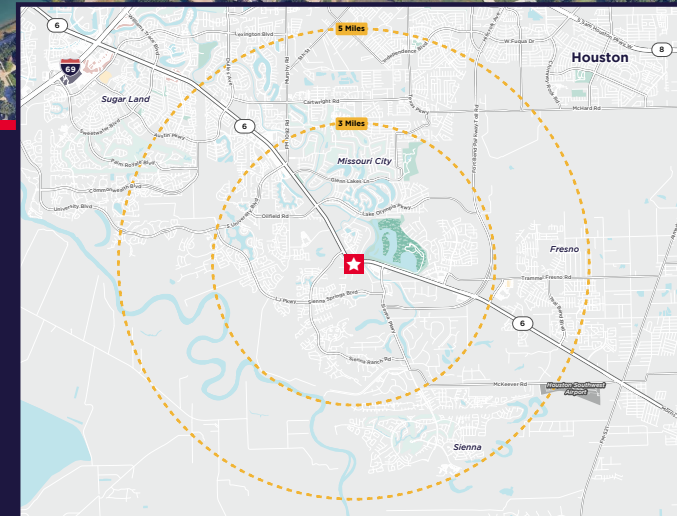
PAD SITES

HWY 6 & KNIGHTS CT, MISSOURI CITY, TX 77459



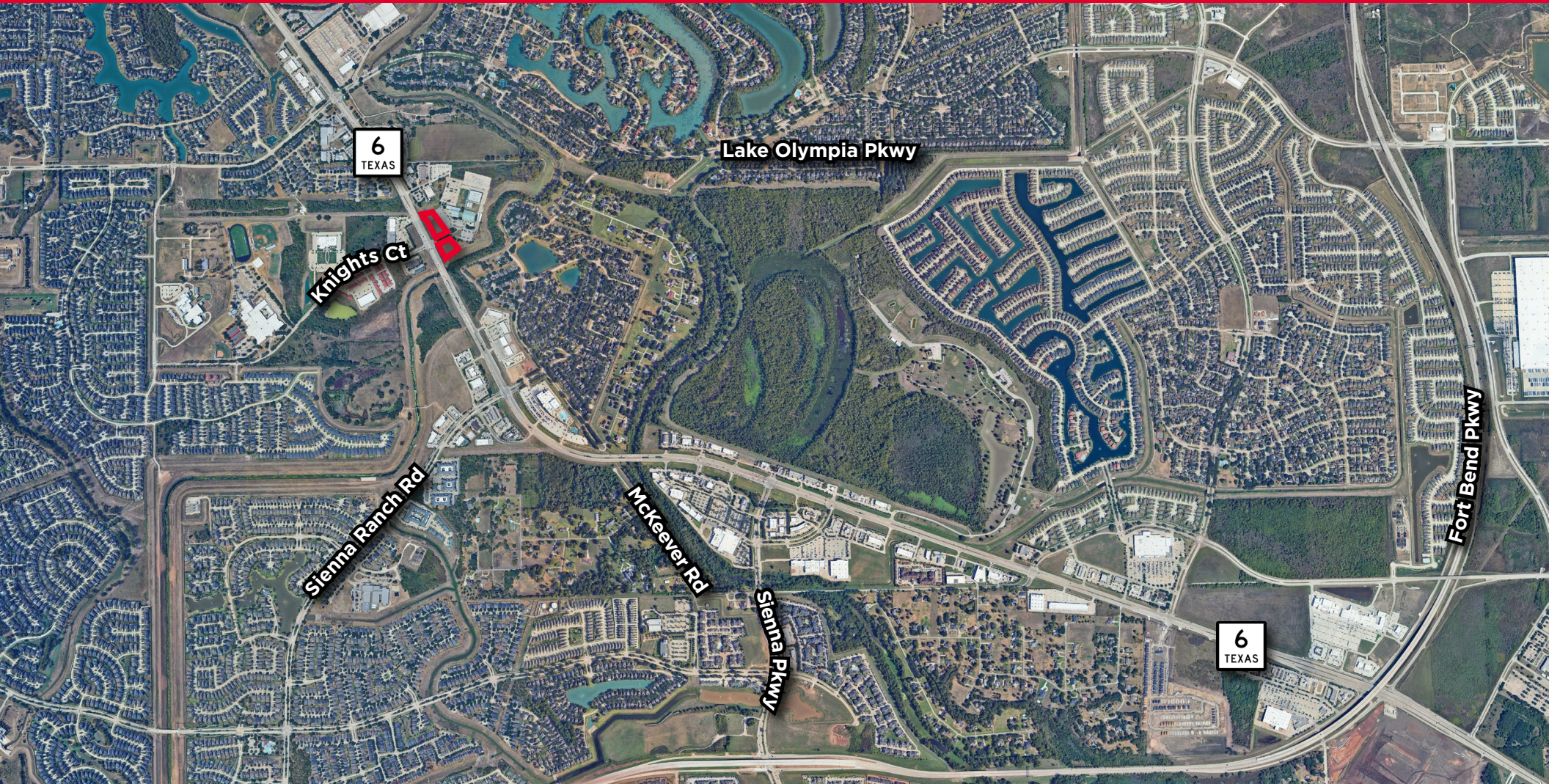
PROPERTY HIGHLIGHTS

- County: Fort Bend
- School District: Fort Bend ISD
- Not located in a floodplain
- LC-3 Zoning
- Excellent visibility and access to Fort Bend Pkwy Toll Rd and I-59/I-69
- Tract A: ±1.1852 acres (not in a MUD; MUD 46 willing to annex, with capacity and a manhole 75' north)
- Tract B: ±1.1161 acres (located in MUD 49)
- Potential for both tracts to be served by MUD 46
- TXDOT has approved one preliminary curb cut on the north tract
- TXDOT is willing to grant a RULIS allowing water and sewer lines to run parallel to Hwy 6
- Future driveway access via Knight Court



PAD SITES

HWY 6 & KNIGHTS CT, MISSOURI CITY, TX 77459



KRISTEN MCDADE

Managing Director
+1 713 331 1796
kristen.mcdade@cushwake.com

MATTHEW DAVIS

Senior Director
+1 713 331 1798
matthew.davis@cushwake.com

MELISSA ELIZONDO

Brokerage Specialist
+1 346 396 4008
melissa.elizondo@cushwake.com

©2026 Cushman and Wakefield. All rights reserved. The information contained in this communication is strictly confidential. This information has been obtained from sources believed to be reliable but has not been verified. NO WARRANTY OR REPRESENTATION, EXPRESS OR IMPLIED, IS MADE AS TO THE CONDITION OF THE PROPERTY (OR PROPERTIES) REFERENCED HEREIN OR AS TO THE ACCURACY OR COMPLETENESS OF THE INFORMATION CONTAINED HEREIN, AND SAME IS SUBMITTED SUBJECT TO ERRORS, OMISSIONS, CHANGE OF PRICE, RENTAL OR OTHER CONDITIONS, WITHDRAWAL WITHOUT NOTICE, AND TO ANY SPECIAL LISTING CONDITIONS IMPOSED BY THE PROPERTY OWNER(S). ANY PROJECTIONS, OPINIONS OR ESTIMATES ARE SUBJECT TO UNCERTAINTY AND DO NOT SIGNIFY CURRENT OR FUTURE PROPERTY PERFORMANCE.