

**25**

Centurian Drive,  
Suite 202

Markham ON

Office for Sub-Lease  
6,830 SF

 CUSHMAN &  
WAKEFIELD



## // Suite Details

<b>Size:</b>	6,830 sf.
<b>Net Rent:</b>	Speak to Listing Agents
<b>T&amp;O:</b>	\$12.42 psf. (2026)
<b>Term:</b>	Sub-Lease until June 2029
<b>Timing:</b>	Available May 1 <sup>st</sup> , 2026

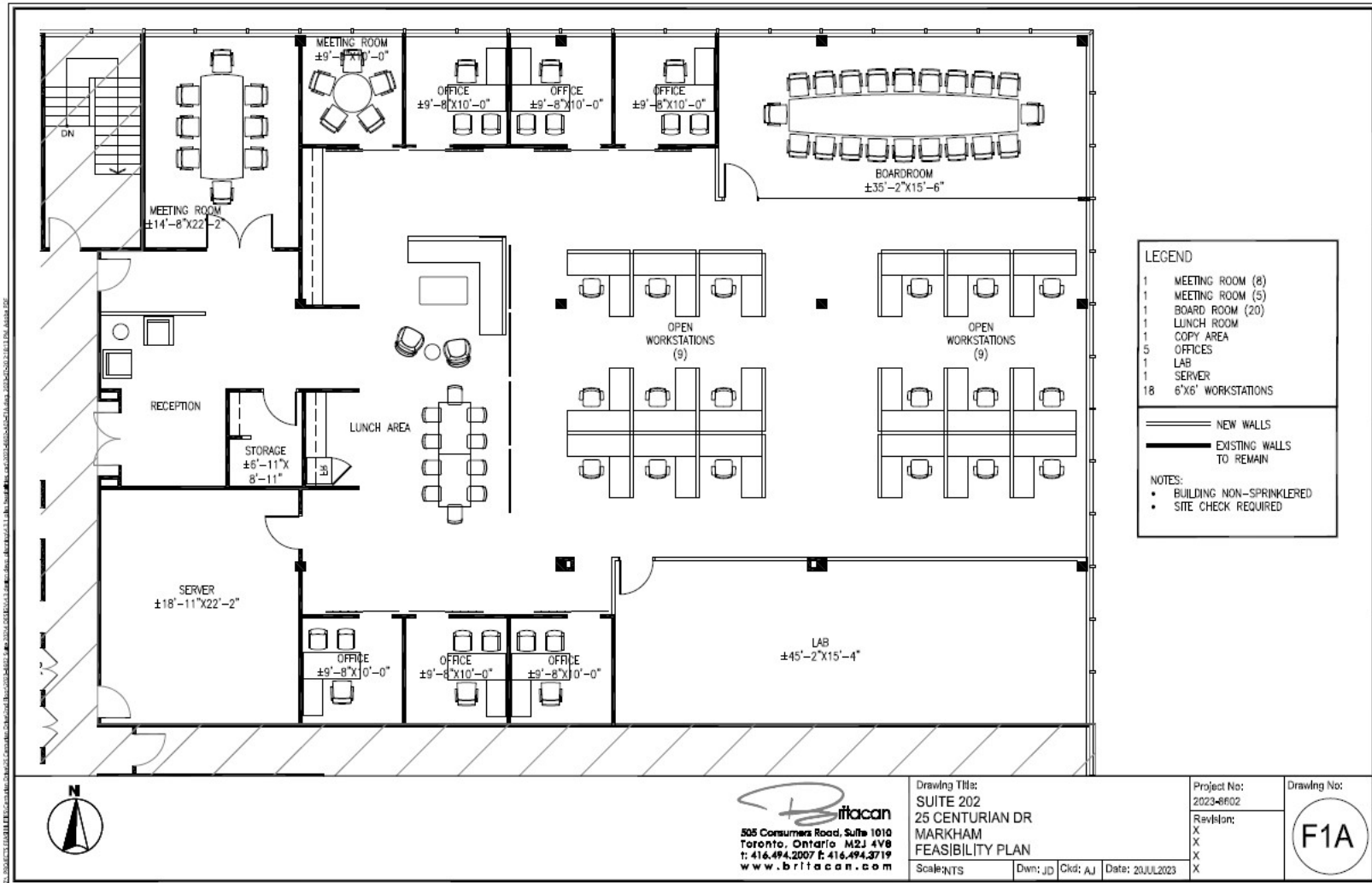
### Comments

- Attractive, Turnkey Office Suite for Sub-Lease
- High-Quality Existing Buildout
- Corner Unit with Excellent Natural Light
- Efficient & Well-Designed Open Work Area
- Modern Kitchenette, Boardroom & Filing Room
- All Furniture, Fixtures & Equipment Available



25 Centurian Drive,  
Suite 202, Markham ON

# // Floor Plan



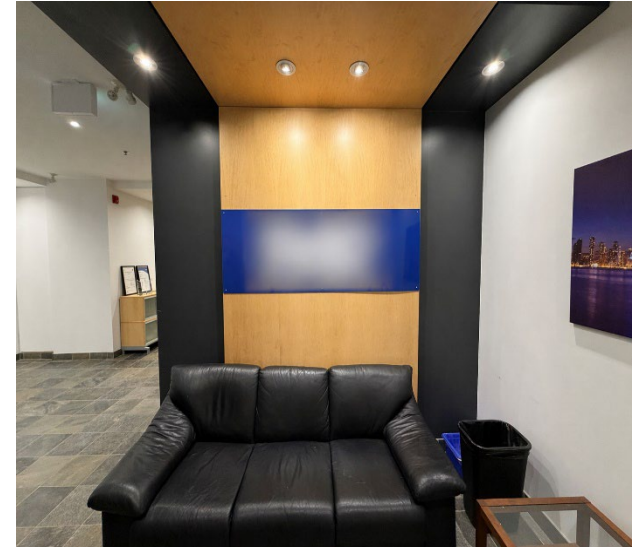
# // Photo Gallery



Building Exterior



Boardroom



Office Entrance



Kitchenette

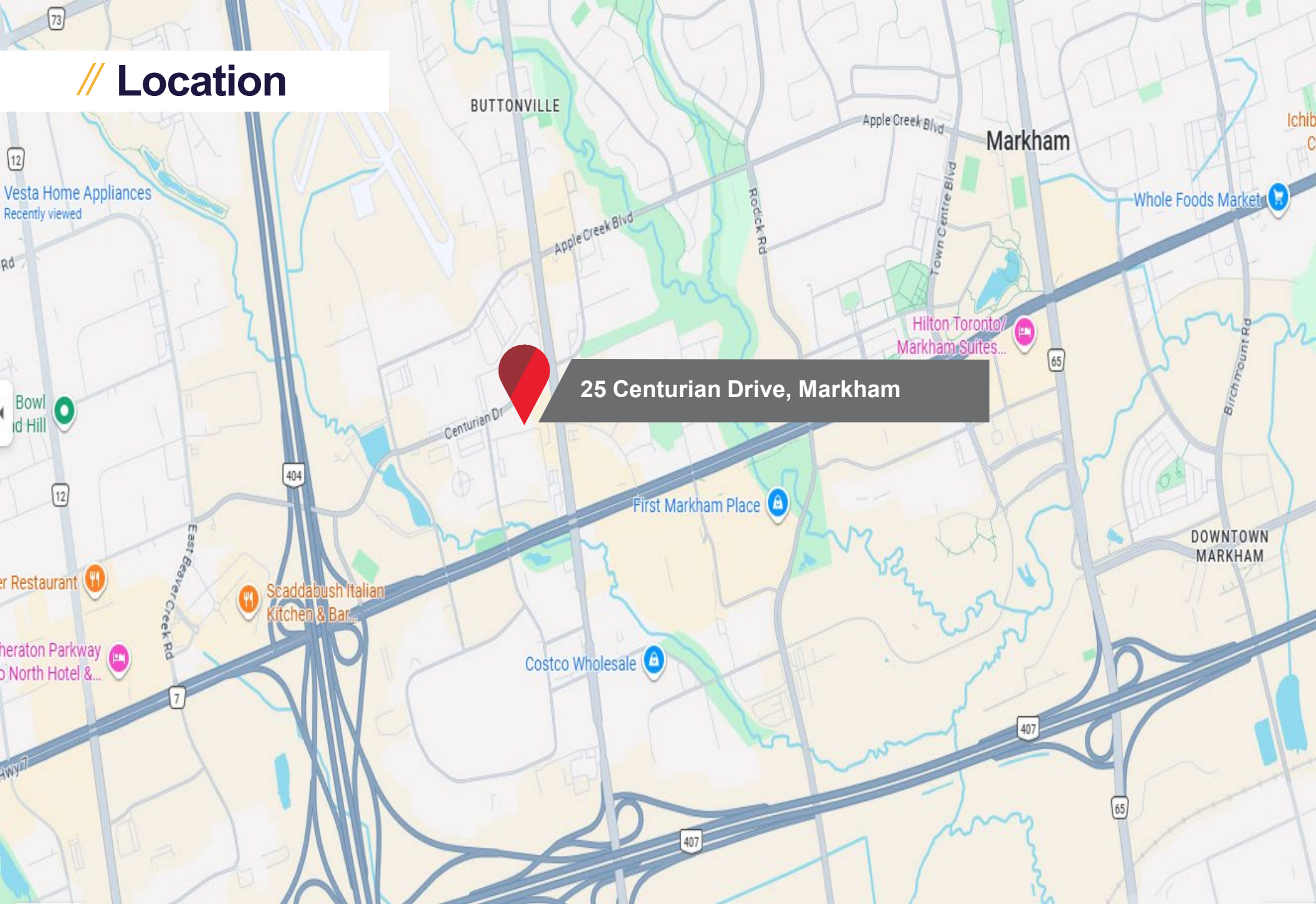


Meeting Room



Open Work Area

# // Location



25 Centurian Drive, Markham

// 25 Centurian Drive,  
Suite 202, Markham ON



## // CONTACT

Mike Brown\*  
Senior Vice President  
416 756 5416  
[mike.brown@cushwake.com](mailto:mike.brown@cushwake.com)

Michael Wood\*  
Associate  
416 756 5406  
[michael.wood2@cushwake.com](mailto:michael.wood2@cushwake.com)

